

Philips Moda
LCD monitor with infinity
display

C Line
27" (68.6 cm)
2560 x 1440 (QHD)

278C6QJSW



Expand beyond boundaries

with a full frameless display

The new Philips Moda display features crystal clear views in an award-winning frameless design. The four-sided edge-to-edge infinity display feels like a larger display. The QHD wide viewing angle display offers vivid colors and crisp text.

Immersive design

- 4-sided frameless display
- EasySelect menu toggle key for quick on-screen menu access

Experience immersive multimedia

- MHL technology for enjoying mobile content on big screen
- DisplayPort connection for maximum visuals

Brilliant performance

- SmartImage presets for easy optimized image settings
- MultiView enables simultaneous dual connection and view
- SmartContrast for rich black details
- IPS LED wide view technology for image and color accuracy
- Less eye fatigue with Flicker-free technology
- Ultra Wide-Color wider range of colors for a vivid picture
- Crystalclear images with Quad HD 2560 x 1440 pixels

PHILIPS

LCD monitor with infinity display
C Line 27" (68.6 cm), 2560 x 1440 (QHD)

278C6QJSW/75

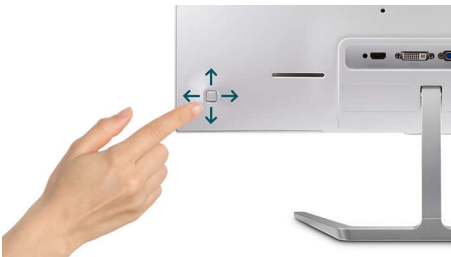
Highlights

4-sided frameless



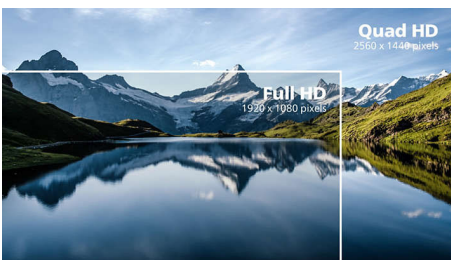
Extremely minimizing 4-sided bezels on this virtually frameless display gives minimalist look and offers an expansive viewing experience. Expand your productivity and make you focus on the vivid images with seamless visions. Significant wide view without distraction even multi monitor set-up in pivot mode.

EasySelect Menu Toggle Key



The discreetly placed EasySelect Menu Toggle Key allows you to make quick and easy adjustments to monitor settings in the On-Screen Display menu.

Crystalclear images



These Philips screens deliver Crystalclear, Quad HD 2560x1440 or 2560x1080 pixel images. Utilizing high performance panels with high density pixel count, enabled by high

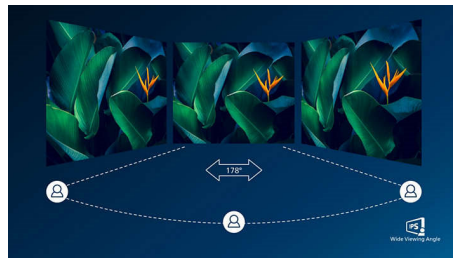
bandwidth sources like USB-C, Displayport, HDMI, these new displays will make your images and graphics come alive. Whether you are demanding professional requiring extremely detailed information for CAD-CAM solutions, using 3D graphic applications or a financial wizard working on huge spreadsheets, Philips displays will give you Crystalclear images.

Ultra Wide-Color Technology



Ultra Wide-Color Technology delivers a wider spectrum of colors for a more brilliant picture. Ultra Wide-Color wider "color gamut" produces more natural-looking greens, vivid reds and deeper blues. Bring, media entertainment, images, and even productivity more alive and vivid colors from Ultra Wide-Color Technology.

IPS technology



IPS displays use an advanced technology which gives you extra wide viewing angles of 178/178 degree, making it possible to view the display from almost any angle. Unlike standard TN panels, IPS displays gives you remarkably crisp images with vivid colors, making it ideal not only for Photos, movies and web browsing, but also for professional applications which

demand color accuracy and consistent brightness at all times.

Flicker-free technology



Due to the way brightness is controlled on LED-backlit screens, some users experience flicker on their screen which causes eye fatigue. Philips Flicker-free Technology applies a new solution to regulate brightness and reduce flicker for more comfortable viewing.

SmartImage



SmartImage is an exclusive leading edge Philips technology that analyzes the content displayed on your screen and gives you optimized display performance. This user friendly interface allows you to select various modes like Office, Photo, Movie, Game, Economy etc., to fit the application in use. Based on the selection, SmartImage dynamically optimizes the contrast, color saturation and sharpness of images and videos for ultimate display performance. The Economy mode option offers you major power savings. All in real time with the press of a single button!



4-sided
Frameless



EasySelect



Quad HD



Ultra Wide Color



IPS
Wide Viewing
Angle



Flicker-free



SmartImage™



Multiview



MHL
Mobile High-Definition Link

Specifications

Connectivity

- Signal Input: VGA (Analog), MHL-HDMI (digital, HDCP), DisplayPort x 1
- Sync Input: Separate Sync, Sync on Green
- Audio (In/Out): HDMI audio out

Picture/Display

- Panel Size: 27 inch / 68.6 cm
- Aspect ratio: 16:9
- LCD panel type: IPS technology
- Backlight type: W-LED system
- Pixel pitch: 0.233 x 0.233 mm
- Optimum resolution: 2560 x 1440 @ 60 Hz
- Brightness: 350 cd/m²
- Display colors: 16.7 M
- Color gamut (typical): NTSC 100%, sRGB 115% (Area based on CIE1976)
- Contrast ratio (typical): 1000:1
- SmartContrast: 20,000,000:1
- Response time (typical): 5 ms (Gray to Gray)*
- Viewing angle: 178° (H) / 178° (V), @ C/R > 10
- Picture enhancement: SmartImage
- Effective viewing area: 596.74 (H) x 335.66 (V)
- Scanning Frequency: 30 - 83 kHz (H) / 56 - 75 Hz (V)
- sRGB
- MHL: 1920 x 1080p @ 30Hz
- Flicker-free

Convenience

- Plug & Play Compatibility: DDC/CI, Mac OS X, sRGB, Windows 10 / 8.1 / 8 / 7
- User convenience: Power On/Off, Menu, Multiview, Input, SmartImage
- OSD Languages: Brazil Portuguese, Czech, Dutch, English, Finnish, French, German, Greek, Hungarian, Italian, Japanese, Korean, Polish, Portuguese, Russian, Simplified Chinese, Spanish, Swedish, Traditional Chinese, Turkish, Ukrainian
- Other convenience: Kensington lock
- MultiView: 2x devices, PIP/PBP mode

Stand

- Tilt: -5/20 degree degree

Power

- Power supply: External, 100-240VAC, 50-60Hz
- Off mode: 0.3 W (typ.)
- On mode: 22.98 W (typ.) (EnergyStar 7.0 test method)
- Standby mode: 0.5 W (typ.)
- Power LED indicator: Operation - White, Standby mode- White (blinking)

Dimensions

- Product with stand (mm): 614 x 464 x 208 mm
- Packaging in mm (WxHxD): 686 x 546 x 250 mm
- Product without stand (mm): 614 x 354 x 45 mm

Weight

- Product with packaging (kg): 10.13 kg
- Product with stand (kg): 7.18 kg
- Product without stand (kg): 4.00 kg

Operating conditions

- Altitude: Operation: +12,000ft (3,658m), Non-operation: +40,000ft (12,192m)
- Temperature range (operation): 0 to 40 °C
- MTBF: 50,000 hrs (Excluding backlight) hour(s)
- Relative humidity: 20%-80 %
- Temperature range (storage): -20 to 60 °C

Sustainability

- Environmental and energy: EnergyStar 7.0, RoHS, Mercury Free
- Recyclable packaging material: 100 %

Compliance and standards

- Regulatory Approvals: CE Mark, FCC Class B, TUV/ISO9241-307, WEEE, CECP, CU-EAC, RCM, TCO Certified

Cabinet

- Color: White
- Finish: Glossy



Issue date 2024-03-24

Version: 4.0.1

EAN: 87 12581 74835 7

© 2024 Koninklijke Philips N.V.
All Rights reserved.

Specifications are subject to change without notice.
Trademarks are the property of Koninklijke Philips N.V.
or their respective owners.

www.philips.com

* This Philips display is MHL certified. However, in case your MHL device does not connect or work correctly, check with your MHL device FAQ or vendor directly for direction. The policy of your device manufacturer may require you to purchase their brand specific MHL cable or adapter in order to work

* Requires optional MHL certified mobile device and MHL cable. (not included) Please check with your MHL device vendor for compatibility.

* Standby/Off energy saving of ErP is not applicable for the MHL charging functionality

* For complete list of MHL-enabled products refer to www.mhlconsortium.org

* Response time value equal to SmartResponse

* "IPS" word mark / trademark and related patents on technologies belong to their respective owners.