

Philips 5000 series
Wireless keyboard

2.4GHz Wireless

Detachable palm rest
Intelligent power saving

SPK6507B



Performance meets comfort

Be comfortable yet stay productive. This keyboard is designed with a detachable palm rest, multimedia shortcuts, and a 2.4G wireless connection for the best working efficiency possible.

Wireless convenience

- 2.4G wireless connection for a completely cordless workspace
- Intelligent power saving

Designed with comfort in mind

- Ergonomic palm rest for extra comfort

Philips reliability

- Keys last millions of keystrokes for durability
- Laser engraved keys look great and last longer

Designed for performance

- Convenient multi-media shortcuts
- Low-profile keys are quick and stylish looking

PHILIPS

Wireless keyboard
2.4GHz Wireless Detachable palm rest, Intelligent power saving

SPK6507B/94

Highlights

Keystrokes for durability



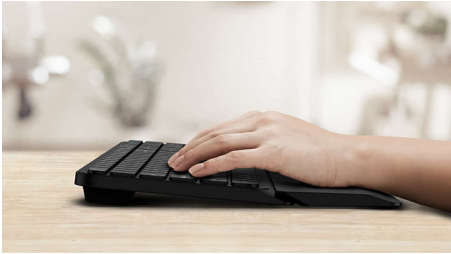
Keys last millions of keystrokes for durability

2.4G wireless connection



Keep the computer wires at bay. For any keyboard/mouse equipped with this feature, you can connect the accessory to any PC via a speedy 2.4Hz wireless connection. The simple setup process, along with the accessory's sleek design, is sure to leave your workspace looking clean and wire-free.

Ergonomic palm rest



The palm rest helps position your hands comfortably on the keyboard, and offers a comfortable place to rest your palms when you are not typing.

multi-media shortcuts



With these multi-media shortcuts, you can easily switch to music, volume, or video play by a simple click.

Intelligent power saving



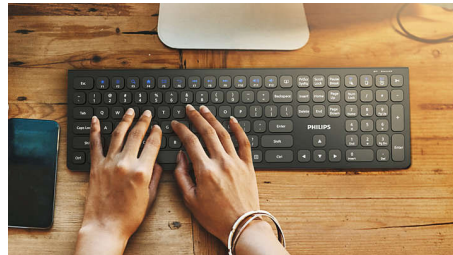
With the intelligent power saving function, this keyboard can go into standby and therefore save power when not in use.

Laser engraved keys



Laser-engraved keys look great, are easy to read and last longer. A premium choice.

Low-profile keys



The low-profile keys add a stylish look and are quick and responsive for typing.

Specifications

OS/System Requirements

- System Requirements: Microsoft Windows 7, Windows 8, Windows 10 or later; Linux V1.24 and above; Mac OS 10.5 and above;

Physical Dimensions

- Dimensions (LxWxH): 433 x 196 x 22 mm
- Weight: 739g

Technical specifications

- Front Panel Color: Black
- Coating Type: Matte/Rubber paint
- Connectivity: 2.4GHz wireless
- Design Type: Ergonomic and stylish design
- Driver Requirement: Driver-free
- Product Type: wireless keyboard
- Front Panel Material: Plastics front-panel
- Key Lifespan: 10 million keystrokes
- Keys: 110 keys



Issue date 2024-04-01

Version: 4.0.1

EAN: 87 12581 78310 5

© 2024 Koninklijke Philips N.V.
All Rights reserved.

Specifications are subject to change without notice.
Trademarks are the property of Koninklijke Philips N.V.
or their respective owners.

www.philips.com