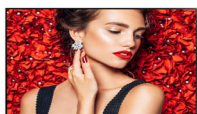




Philips Signage Solutions
E-Line Display

49"

Edge-lit LED
Full HD
500cd/m²



49BDL4031D

Connect with your audience 24/7

With the future proof Smart Collection

With this energy efficient Signage Solution display, you will enjoy all the benefits of state-of-the-art connectivity and content management possibilities while being ensured that remote management safeguards the lowest cost of ownership

Optimized for public viewing

- IPS wide view technology for image and color accuracy
- Designed for 24/7 operation

Innovative solutions for any signage application

- Connect and control your content via the cloud with HTML5
- Schedule what you want, when you want with SmartPlayer
- Free and easy-to-use content management with SmartCMS
- Optional OPS Insert to create an all-in-one solution
- Save and play content with internal memory

Maximizing the impact of your message

- Colour Calibration kit to ensure uniform colours

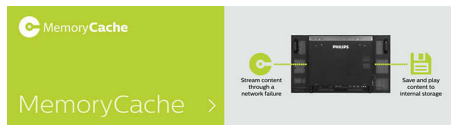
Care about you, your business and your audience

- SmartPower for energy saving
- Keep your content up and running with FailOver
- Clinical D-image preset for DICOM part 14 Grayscale images

PHILIPS

Highlights

Internal Memory



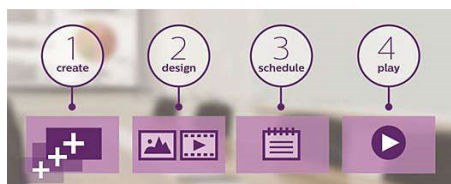
Save and play content with internal memory. Upload your media into the display and playback content immediately. Working in conjunction with the internal browser, it also serves as a memory cache when streaming online content. If the network ever fails, the internal memory keeps content running by playing a cached version of the content, ensuring that your media stays up even if the network goes down.

FailOver



Keeping your content up and running is critical for demanding commercial applications. While it is unlikely you will face a content disaster, FailOver provides content protection with a revolutionary technology that plays back-up content on screen in the event of a media player failure. FailOver automatically kicks in when the primary input fails. Simply select a primary input connection and a FailOver connection and your ready for instant protection.

SmartCMS



Free and easy-to-use content management system that works exclusively with Philips Sigage Solutions displays to manage your digital signage content. With SmartCMS you can create and schedule your own content over 24 hours every day. Simply create your network,

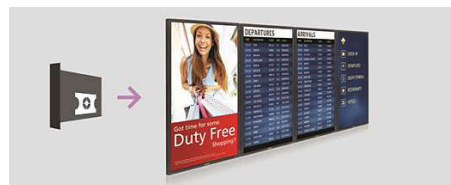
design your content, schedule your playlist and you are ready to play!

SmartBrowser



Connect and control your content via the cloud with the integrated HTML5 browser. Design your signage content online and connect it with a display or with your complete network. Simply plug in a RJ45 internet cable for network connection, connect the display with the dedicated url-address and you are ready to play your cloud based content.

OPS Insert



Turn your display into an all-in-one digital signage solution and create a display network which is connected, intelligent and secure. Open Pluggable Specification (OPS) is an industry standard slot into which you can add an OPS-standardized media player. This cable free solution gives you the ability to install, use or maintain your hardware whenever you need.

Advanced Colour Calibration



The Advanced Colour Calibration kit controls the luminance of the backlight, standardizes the gamma curve and calibrates the greyscale of your display network. Whether you have an impressive video wall, a catchy mosaic layout, a

menu board installation or a control room each display can be adjusted to the same colour values. With this optional kit you ensure consistent colour performance over all displays in your network.

Clinical D-image



Monitors must show medical images consistently with high quality to achieve reliable interpretations. The rendering of medical Grayscale images on standard monitors is mostly inconsistent at best, making them unsuitable for usage in a clinical environment. Philips clinical review displays with clinical D-image preset are factory calibrated to give DICOM part 14 compatible Grayscale standard display performance. By using high quality LCD panels with LED technology, Philips offers you consistent and reliable performance at an affordable price point. Further info on <http://medical.nema.org/>

SmartPlayer



Turn your USB into a true cost effective digital signage device. Simply save your content (video, audio, pictures) on your USB and plug into your display. Create your playlist and schedule your content via the on screen menu, and enjoy your own created playlists anytime, anywhere.

IPS Display Technology

Philips IPS displays uses an advanced technology which gives you extra wide viewing angles of 178/178 degree, making it possible to view the display from almost any angle - even in portrait mode. IPS displays gives you remarkably crisp images with vivid colors, especially suitable for professional video wall and menuboard applications which demand color accuracy and consistent brightness at all times.

Specifications

Connectivity

- Audio output: 3.5mm jack
- Video input: HDMI (x2), Display Port1.2 (x1), DVI-I (x1)
- Audio input: 3.5 mm jack
- Video output: DisplayPort 1.2 (x1), DVI-I (x1)
- External control: RJ45, RS232C (in/out) 2.5 mm jack, IR (in/out) 3.5 mm jack

Picture/Display

- Diagonal screen size (metric): 123.2 cm
- Diagonal screen size (inch): 48.5 inch
- Aspect ratio: 16:9
- Panel resolution: 1920x1080p
- Pixel pitch: 0.55926 x 0.55926 mm
- Optimum resolution: 1920 x 1080 @ 60Hz
- Brightness: 450 cd/m²
- Display colors: 16.7 Million
- Contrast ratio (typical): 1100:1
- Dynamic contrast ratio: 500,000:1
- Response time (typical): 8 ms
- Viewing angle (horizontal): 178 degree
- Viewing angle (vertical): 178 degree
- Picture enhancement: 3/2 - 2/2 motion pull down, 3D Combfilter, Motion compens. deinterlacing, 3D MA deinterlacing, Progressive scan
- Panel technology: IPS
- Placement: Landscape (24/7), Portrait (24/7)

Convenience

- Picture in picture: PIP
- Tiled Matrix: Up to 10 x 10
- Screen saving functions: Pixel Shift, Low Bright
- Keyboard control: Hidden, Lockable
- Signal loop through: DVI, IR Loophthrough
- Network controllable: RJ45, RS232

Sound

- Built-in speakers: 2 x 10 W RMS

Power

- Mains power: AC (100 ~ 240 V) , 2.5A
- Consumption (On mode): 130W(max)
- Consumption (Typical): 75 W
- Standby power consumption: <0.5 W

Supported Display Resolution

- Computer formats: 1920 x 1200, 60Hz, 1920 x 1080, 60Hz, 1440 x 900, 60Hz, 1366 x 768, 60Hz,

- 1360 x 768, 60Hz, 1280 x 800, 60Hz, 1280 x 768, 60Hz, 1024 x 768, 60Hz, 800 x 600, 56, 60, 72, 75Hz, 640 x 480, 60, 67, 72, 75Hz, 1600 x 1200, 60Hz
- Video formats: 1080p, 50, 60Hz, 1080i, 50, 60Hz, 720p, 50, 60Hz, 576i, 50Hz, 576p, 50Hz, 480p, 60Hz, 480i, 60Hz

Dimensions

- Set Width: 1097.6 mm
- Product weight: 14.8 kg
- Set Height: 633.9 mm
- Set Depth: 45.5 mm
- Set Width (inch): 43.21 inch
- Set Height (inch): 24.96 inch
- Wall Mount: 400 x 400 mm, M6
- Set Depth (inch): 1.79 inch
- Bezel width: 9.6 mm (T/L/R), 15.7 mm (B)
- Product weight (lb): 32.63 lb

Operating conditions

- Altitude: 0 ~ 3000 m
- Temperature range (operation): 0 ~ 40 °C
- MTBF: 50,000 hour(s)
- Temperature range (storage): -20 ~ 60 °C
- Humidity range (operation)[RH]: 10 ~ 90% (without condensation)
- Humidity range (storage) [RH]: 0 ~ 100% (without condensation)

Accessories

- Included accessories: Remote Control, Batteries for remote control, AC Power Cord, Quick start guide, RS232 cable
- Included Accessories: Edge Alignment Kit (1)-2pcs, Edge Alignment Kit (2)-1pcs, M3 screw (x1), RS232 daisy-chain cable, SD card cover (x1), Thumb Screw (x8)
- Stand: BM05922 (Universal Stand-L)(Option)

Miscellaneous

- On-Screen Display Languages: English, French, German, Spanish, Polish, Turkish, Russian, Italian, Simplified Chinese, Traditional Chinese, Arabic, Japanese
- Warranty: 3 year warranty
- Regulatory approvals: CE, UL/cUL, CB, EAC, EMF, EnergyStar 8.0, FCC, Class A, PSB



Issue date 2024-03-23

Version: 2.0.1

EAN: 87 12581 75597 3

© 2024 Koninklijke Philips N.V.
All Rights reserved.

Specifications are subject to change without notice.
Trademarks are the property of Koninklijke Philips N.V.
or their respective owners.

www.philips.com