

PHILIPS



4K HDR display with
Ambiglow

Gaming Monitor

Momentum

43 (42.51" / 108 cm diag.)

3840 x 2160 (4K UHD)



439M1RV

Optimized performance for next-gen gaming

Get in the moment with this Momentum gaming monitor with immersive Ambiglow. An ultra-clear 4K picture at 144Hz, Sync technology and low Input lag deliver a smooth gaming feel. DisplayHDR 400 gives ultra-crisp and vibrant image quality.

Design to enhance the senses

- Ambiglow adds a new dimension to your viewing experience
- Enhanced audio with DTS Sound™

Meet the most recent update of HDMI specification

- Smooth console gaming at 4K / 120Hz
- 4K / 144Hz PC gaming on the big screen
- AMD FreeSync™ Premium Pro; smooth, low latency HDR gaming
- Purpose-built for low latency gaming
- SmartImage HDR gives optimal viewing from your HDR content

Features for gamers needs

- LowBlue mode and Flicker-free easy-on-the eyes viewing
- MultiView enables simultaneous dual connection and view
- USB-C one cable does it all
- Access and display multiple sources on two devices
- VA display delivers awesome images with wide viewing angles

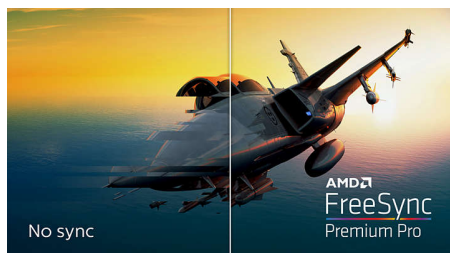
Gaming Monitor

4K HDR display with Ambiglow

439M1RV/71

Highlights

AMD FreeSync™ Premium Pro



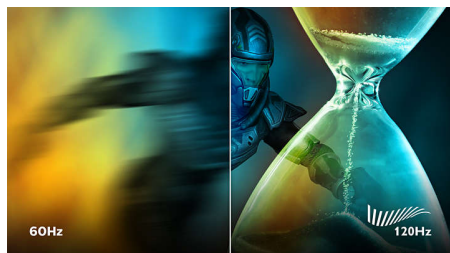
Gaming shouldn't be a choice between choppy gameplay or broken frames. This display is certified with AMD FreeSync™ Premium Pro, which provides a variable refresh rate (VRR) and the true HDR gaming experience. This provides a combination of smooth gaming at peak performance, and exceptional high dynamic range visuals while still maintaining low latency.

4K / 144Hz PC gaming



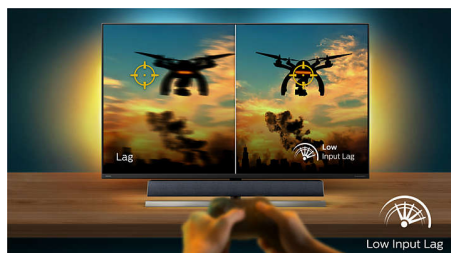
PC gamers who demand a true 4K gaming experience with the fastest refresh rate of 144Hz can now enjoy even smoother performance with the included connections.

4K / 120Hz Console gaming



Game with ultra-clear 4K resolution at a smooth 120Hz refresh rate when you connect your Xbox Series X & other next-gen consoles via one of multiple HDMI 2.1 connections. A faster refresh rate ensures less skipped frames, showing enemy movement in ultra-clear, smooth motion to easily target them.

Low Latency Gaming



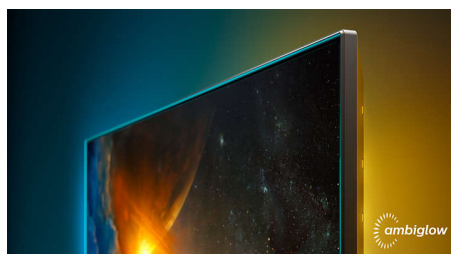
Unlike standard TVs, Philips Momentum gaming displays are purpose-built with low lag and lighting fast pixel response as a priority and supports fast-paced, reaction time-sensitive games. The display also provides variable refresh rate (VRR) support for Xbox Series X to achieve seamlessly smooth motion.

SmartImage HDR



Select one of SmartImage HDR modes to best suit your needs. HDR Game: Optimize for playing video games. With brighter white and darker black, the gaming scene is vivid and revealing more details, easily spot enemies hiding in the dark corner and shadows. HDR Movie: Ideal for watching HDR movie. Deliver better contrast and brightness for more realistic and immerse viewing experience. HDR Photo: Enhance red, green, and blue for lively visuals. DisplayHDR: VESA DisplayHDR certified*. Personal: Customize settings in picture menu. *Please refer to specification for HDR grade.

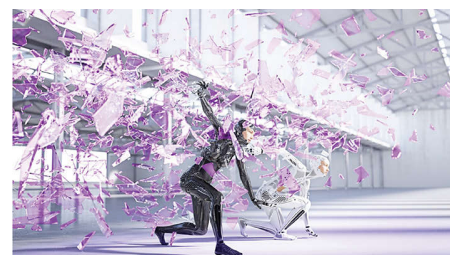
Ambiglow



The innovative Ambiglow technology enhances the content on the screen by creating a halo of light from the monitor. Its fast processor analyses

the incoming image content, continuously adapts the color and brightness of the emitted light to match the image. Especially suited for watching movies, sports or playing games, Philips Ambiglow offers you a unique and immersive viewing experience.

DTS Sound™



DTS Sound is an audio processing solution designed to optimize the playback of music, movies, streaming and games on the PC regardless of form factors. DTS Sound enables an immersive virtual surround sound experience, complete with rich bass and dialog enhancement and maximized volume levels free of any clipping or distortion.

MultiView and built-in KVM



Control and switch between two devices through a single keyboard and mouse with the built-in KVM. MultiView lets you survey both sources simultaneously on one screen. With these features, you can reduce cable clutter and save valuable time. Perfect for streamers with two PCs, content creators or when prepping devices for a LAN event.

USB-C

This Philips display features a USB type-C connector with power delivery. With intelligent and flexible power management, you can power charge your compatible device directly. Its slim, reversible USB-C allows for easy, one-cable connection. You can watch high-resolution video while powering up and re-charging your compatible device at the same time.



Gaming Monitor

4K HDR display with Ambiglow

439M1RV/71

Highlights

LowBlue Mode & Flicker-free



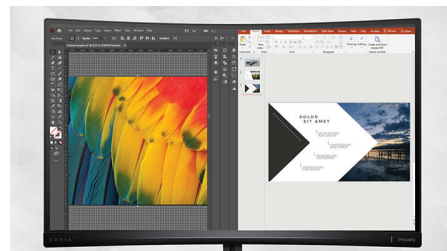
Our LowBlue Mode and Flicker-free technology have been developed to reduce eye strain and fatigue often caused by long hours in front of a monitor.

VA display



Philips VA LED display uses an advanced multi-domain vertical alignment technology which gives you super-high static contrast ratios for extra vivid and bright images. While standard office applications are handled with ease, it is especially suitable for photos, web-browsing, movies, gaming, and demanding graphical applications. It's optimized pixel management technology gives you 178/178 degree extra wide viewing angle, resulting in crisp images.

MultiView technology



With the ultra-high resolution Philips MultiView display you can now experience a world of connectivity. MultiView enables active dual connect and view so that you can work with multiple devices like a PC and notebook simultaneously, for complex multi-tasking.



Multiview

Specifications

Picture/Display

Panel Size: 42.51 inch / 108 cm
Aspect ratio: 16:9
LCD panel type: VA LCD
Backlight type: W-LED system
Pixel pitch: 0.2451 x 0.2451 mm
Brightness: 550 cd/m²
Display colors: Color support 1.07 billion colors
Color gamut (typical): NTSC 106.8%*, sRGB 127.7%*, Adobe RGB 90.4%*
Color gamut (min.): DCI-P3 Coverage: 95.6%*
Contrast ratio (typical): 4000:1
SmartContrast: Mega Infinity DCR
Response time (typical): 4 ms (Gray to Gray)*
Viewing angle: 178° (H) / 178° (V), @ C/R > 10
Picture enhancement: SmartImage game
Maximum resolution: HDMI / DP: 3840 x 2160 @ 144 Hz*; USB-C: 3840 x 2160 @ 120 Hz
Effective viewing area: 941.18 (H) x 529.412 (V) mm
Scanning Frequency: HDMI: 30 - 135 kHz (H) / 48 - 144 Hz (V); DP: 30 - 254 kHz (H) / 48 - 144 Hz (V); USB C: 30 - 254 kHz (H) / 48 - 120 Hz (V)
sRGB
Delta E: < 2 (sRGB)
Flicker-free
Pixel Density: 103.64 PPI
LowBlue Mode
SmartUniformity: 93 ~ 105%
MPRT: 1 ms
Low Input Lag
AMD FreeSync™ technology: Premium Pro
HDR: DisplayHDR 400 certified
Ambiglow: 4-sided
HDMI 2.1 Feature: VRR, FRL

Connectivity

Signal Input: HDMI 2.1 x 3, DisplayPort 1.4 x 1, USB-C x 1 (DP Alt mode, PD 65W)
Sync Input: Separate Sync
Audio (In/Out): Audio out
EasyLink (HDMI-CEC): Remote control pass-through, System audio control, System standby
USB:: USB-B x 1 (upstream), USB 3.2 x 4 (downstream with 2 fast charge B.C 1.2)
HDCP: HDCP 2.2 (HDMI)

USB

Power delivery: USB PD version 3.0
Super speed: Data and Video transfer
DP: Built-in Display Port Alt mode
USB-C max. power delivery: Up to 65W (5V/3A, 7V/3A, 9V/3A, 10V/3A, 12V/3A, 15V/3A, 20V/3.25A)

Convenience

Built-in Speakers: 7 W x 2, DTS Sound
Plug & Play Compatibility: DDC/CI, Mac OS X, sRGB, Windows 10 / 8.1 / 8 / 7
User convenience: Power On/Off, Menu/OK, Input/Up, Sound Mode/Down, SmartImage game/Back
OSD Languages: Brazil Portuguese, Czech, Dutch, English, Finnish, French, German, Greek, Hungarian, Italian, Japanese, Korean, Polish, Portuguese, Russian, Spanish, Simplified Chinese, Swedish, Turkish, Traditional Chinese, Ukrainian
Other convenience: Kensington lock, VESA mount (200x200mm)
MultiView: PBP (2x devices)
KVM: USB-C, USB-B

Stand

Height adjustment: 110 mm
Swivel: -/+ 20 degree
Tilt: -5/15 degree

Power

Power supply: Internal, 100-240VAC, 50-60Hz
Off mode: 0.3 W (typ.)
On mode: 64.4 W (typ.)
Standby mode: 0.5 W (typ.)
Power LED indicator: Operation - White, Standby mode- White (blinking)

Dimensions

Packaging in mm (WxHxD): 1150 x 704 x 284 mm
Product without stand (mm): 978 x 573 x 78 mm
Product with stand(max height): 978 x 738 x 341 mm

Weight

Product with packaging (kg): 23.69 kg
Product with stand (kg): 18.00 kg
Product without stand (kg): 12.80 kg

Operating conditions

Altitude: Operation: +12,000ft (3,658m), Non-operation: +40,000ft (12,192m)
Temperature range (operation): 0°C to 40 °C
MTBF: 50,000 (Excluded backlight) hour(s)
Relative humidity: 20%-80 %
Temperature range (storage): -20°C to 60 °C

Sustainability

Environmental and energy: RoHS
Recyclable packaging material: 100 %
Specific Substances: Mercury free, PVC / BFR free housing

Compliance and standards

Regulatory Approvals: CB, CE Mark, FCC Class B, ICES-003

Cabinet

Color: Black
Finish: Textured / Glossy

Accessories

Included accessories: Remote Control

* The maximum resolution works for either HDMI input or DP input.

* For best output performance, please always ensure that your graphic card is capable of achieving the maximum resolution and refresh rate of this Philips display.

* Response time value equal to SmartResponse

* MPRT is to adjust brightness for blur reduction, so cannot adjust brightness while MPRT is turned on. To reduce motion blur, LED backlight will strobe synchronously with screen refresh, which may cause noticeable brightness change.

* MPRT is gaming-optimized mode. Turn on MPRT may cause noticeable screen flickering. It is recommended to turn off when you are not using the gaming function.

* DCI-P3 Coverage based on CIE1976

* NTSC Area based on CIE1976

* sRGB Area based on CIE1931

* Adobe RGB Coverage based on CIE1976

* For USB-C power and charging function, your Notebook/device must support USB-C standard Power Delivery specifications. Please check with your Notebook user manual or manufacturer for more details.

* For Video transmission via USB-C, your Notebook/device must support USB-C DP Alt mode

* 2020 Advanced Micro Devices, Inc. All rights reserved.

AMD, the AMD Arrow logo, AMD FreeSync™ and combinations thereof are trademarks of Advanced Micro Devices, Inc. Other product names used in this publication are for identification purposes only and may be trademarks of their respective companies.

* The monitor may look different from feature images.

