



Philips Signage Solutions  
LED Display

27"

Direct View LED



27BDL9015L

## Limitless

Bezel-free LED display wall.

Fill their imagination. Create seamless displays. With an L-Line Professional LED Display Wall, the possibilities are endless. The bezel-free design, wide viewing angle, and breathtaking brightness ensure authoritative imaging. At any size.

### **Spectacular picture. Endless possibilities.**

- Zero bezel. Create seamless display screens
- LED display. Superb image quality. Perfect uniformity
- Consistent brightness even at wide viewing angles

### **Effortless setup. Reliable performance.**

- Join multiple cabinets to achieve higher resolution
- Built-in rear cable cover. Easy cable management
- Front-access LED modules. Easy maintenance and servicing

### **Immersive viewing. Versatile LED solution.**

- Perfect clarity. From broadcast studio to control room
- Ultra-high refresh rate. Smooth, judder-free images
- Ultra-thin pixel pitch of 1.5 mm. Beautiful at any size
- Create bezel-free video walls of any shape or size

**PHILIPS**

# Highlights

## **Built-in rear cable cover.**

Your Philips Professional LED Display features built-in rear cable covers to keep power and data cables tidy. Display cabinets can also be daisy-chained, for both power and data. Allowing you to minimize clutter, speed up installation.

## **Create bezel-free video walls**

Simply connect multiple LED display cabinets to create the resolution you want-whether it's 4K, 8K, or even higher. Compared to LCD screens, LED displays boast higher refresh rates that enable smoother images. Whatever the application, you'll thrill them with crystal-clear picture quality.

## **Front-access LED modules.**

Internal electronics are easy to access for servicing or maintenance. Each of the eight LED modules in a cabinet can be removed using a dedicated magnetic JIG tool, which lifts the module out from the front.

## **Join multiple cabinets**

Join multiple cabinets to achieve higher resolution

## **Perfect clarity**

Perfect clarity. From broadcast studio to control room

## **LED display. Superb image**

Create bezel-free video walls of any shape, size, or resolution. The modular design of Philips Professional LED cabinets means you

can adapt to any space. Build vast, immersive installations or assemble intriguing patterns. Easily create video walls that flow seamlessly around doorways and other openings.

## **Ultra-high refresh rate**

Ultra-high refresh rate. Smooth, judder-free images

## **Ultra-thin pixel pitch of 1.5**

Ultra-thin pixel pitch of 1.5 mm. Beautiful at any size

## **Zero bezel**

Zero bezel. Create seamless display screens

## **Consistent brightness**

Consistent brightness even at wide viewing angles

# Specifications

## Picture/Display

- Aspect ratio: 16:9
- Brightness Uniformity:  $\geq 97\%$
- Brightness after calibration: 650 nits
- Brightness before calibration: 750 nits
- Calibration(brightness/color): Supported
- Color temperature adjust range: 4000~9500 K (by software)
- Color temperature default:  $6500 \pm 500$  K
- Contrast ratio (typical):  $\geq 3000:1$
- Viewing angle (horizontal): 160 degree
- Viewing angle (vertical): 160 degree
- Picture enhancement: Dynamic contrast enhancement, Wide color gamut display
- Placement: Landscape
- Frame frequency (Hz): 50 & 60
- Refresh rate(Hz): 1920~3840
- Usage: 24/7 Hrs, Indoor

## Convenience

- Ease of installation: Locking mechanism for cabinet, Guide pins, Light weight
- Power loop through: For 230V environments: 8 cabinets or less, for 110V environments: 4 cabinets or less
- Signal control loop through: RJ45

## Power

- Consumption (Typical):  $\leq 53$  W
- Max Power consumption (W):  $\leq 160$  W
- BTU Value m2: 2,624 BTU/m2
- Input voltage: AC100~240V (50 & 60Hz)

## Operating conditions

- Temperature range (operation):  $-20 \sim 45$  °C
- Temperature range (storage):  $-20 \sim 50$  °C
- Humidity range (operation)[RH]: 10~80%
- Humidity range (storage) [RH]: 10~85%

## Cabinet

- Cabinet area (m2): 0.2079
- Cabinet pixels (Dot): 82,944
- Cabinet resolution (W x H): 384x216
- Cabinet size (mm): 608x342x55
- Data connector: RJ45
- Power connector: In/Out(C14/C13)
- Receiving card quantity: 2 pcs
- Receiving card spec.: A5S plus
- Receiving card brand: Novastar
- Weight (KG):  $8(+/-0.4)$  Kg
- Cabinet diagonal (inch): 27.5
- Cabinet construction: Die-Casting Aluminum

## Module

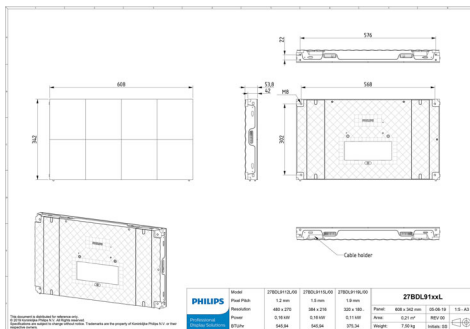
- LED type: SMD 1010 Copper wire
- Pixel constitution: 1R1G1B
- LED lifetime(Hrs): 100,000
- Module resolution (WxH pixels): 96x108
- Module size (WxHxD in mm): 152x171x10
- Pixel pitch (mm): 1.583

## Accessories

- Common connecting piece: 4 pcs
- LAN cable (RJ45, CAT-5): 1 pcs
- QSG: 1 pcs
- Screw bolt: 4 pcs (M8\*20) (Inner Hexagon Screw)
- Power loop through cable: 1 pcs

## Miscellaneous

- Warranty: 2 years
- Regulatory approvals: RoHS, EN61000-3-2, EN61000-3-3, IEC/UL60950, IEC/UL62368, IEC62471, EN55032, EMC Class B, FCC SDOC, Part 15, EN55035



Issue date 2024-03-24

Version: 1.1.1

EAN: 87 12581 75234 7

© 2024 Koninklijke Philips N.V.  
All Rights reserved.

Specifications are subject to change without notice.  
Trademarks are the property of Koninklijke Philips N.V.  
or their respective owners.

[www.philips.com](http://www.philips.com)