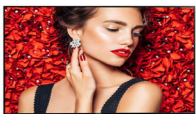




Philips Signage Solutions  
D-Line Display

55"

Edge-lit LED  
Full HD  
450 cd/m<sup>2</sup>



55BDL4031D

## Inform. Effortlessly.

Smart, powerful 24/7 display.

Make it clear with a powerful Philips D-Line Professional Full HD Display. This responsive solution offers brilliant picture quality, simple control and reliable connectivity.

### **Brilliant picture. Blazing processor speed.**

- Full HD. Clear images. Crisp contrast
- IPS panel: rich colour consistency from every angle
- Place in landscape or portrait orientation

### **Effortless setup. Total control.**

- Operate, monitor and maintain with CMND and Control

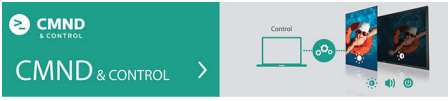
### **Cost-effective system solution**

- Energy-saving automatic backlight control
- FailOver ensures that content is always playing

# PHILIPS

# Highlights

## CMND and Control



Run your display network over a local (LAN) connection. CMND and Control allows you to perform vital functions like controlling inputs and monitoring display status. Whether you're in charge of one screen or 100.

## Energy saving

Energy-saving automatic backlight control

## FailOver



From waiting room to meeting room, never show a blank screen. FailOver lets your Philips Professional Display switch automatically between primary and secondary inputs, ensuring that content keeps playing even if the primary source goes down. Simply set a list of

alternative inputs to be sure your business is always on.

## Full HD. Clear images. Crisp

Full HD. Clear images. Crisp contrast

## IPS panel rich colour

IPS panel: rich colour consistency from every angle

## Place in landscape

Place in landscape or portrait orientation

# Specifications

## Connectivity

- Audio output: 3.5 mm jack
- Video input: Display Port 1.2 (x 1), DVI-I (x 1), HDMI (x 2)
- Audio input: 3.5 mm jack
- Video output: DisplayPort 1.2 (x 1), DVI-I (x 1)
- External control: RJ45, RS232C (in/out) 2.5 mm jack, IR (in/out) 3.5 mm jack

## Picture/Display

- Diagonal screen size (metric): 139 cm
- Diagonal screen size (inch): 54.6 inch
- Aspect ratio: 16:9
- Panel resolution: 1920 x 1080p
- Pixel pitch: 0.630 x 0.630 mm
- Optimum resolution: 1920 x 1080 @ 60 Hz
- Brightness: 450 cd/m<sup>2</sup>
- Display colours: 16.7 Million
- Contrast ratio (typical): 1100:1
- Dynamic contrast ratio: 500,000:1
- Response time (typical): 12 ms
- Viewing angle (horizontal): 178 degree
- Viewing angle (vertical): 178 degree
- Picture enhancement: 3/2 - 2/2 motion pull down, 3D Combfilter, Motion compens. deinterlacing, Progressive scan, 3D MA deinterlacing
- Panel technology: IPS
- Placement: Landscape (24/7), Portrait (24/7)

## Convenience

- Picture in picture: PIP
- Tiled Matrix: Up to 15 x 15
- Screen-saving functions: Pixel Shift
- Keyboard control: Hidden, Lockable
- Signal loop through: IR Loop through, DVI, DisplayPort
- Network controllable: RJ45, RS232

## Sound

- Built-in speakers: 2 x 10 W RMS

## Power

- Mains power: AC (100–240 V), 2.5 A
- Consumption (On mode): 150 W (max)
- Consumption (Typical): 85 W
- Standby power consumption: <math>\leq 0.5</math> W
- Energy Label Class: G

## Supported Display Resolution

- Computer formats: 1920 x 1200, 60 Hz, 1920 x 1080, 60 Hz, 1600 x 1200, 60 Hz, 1440 x 900, 60 Hz, 1366 x 768, 60 Hz, 1360 x 768, 60 Hz, 1280 x 800, 60 Hz, 1280 x 768, 60 Hz, 1024 x 768, 60 Hz, 800 x 600, 56, 60, 72, 75 Hz, 640 x 480, 60, 67, 72, 75 Hz
- Video formats: 1080p, 50, 60 Hz, 1080i, 50, 60 Hz, 720p, 50, 60 Hz, 576i, 50 Hz, 576p, 50 Hz, 480p, 60 Hz, 480i, 60 Hz

## Dimensions

- Set Width: 1233.4 mm
- Product weight: 18.0 kg
- Set Height: 710.3 mm
- Set Depth: 45.5 mm
- Set Width (inch): 48.56 inch
- Set Height (inch): 27.96 inch
- Wall Mount: 400 x 400 mm, M6
- Set Depth (inch): 1.79 inch
- Bezel width: 9.6 mm (T/L/R), 15.7 mm (B)
- Product weight (lb): 39.68 lb

## Operating conditions

- Altitude: 0 ~ 3000 m
- Temperature range (operation): 0 ~ 40 °C
- MTBF: 50,000 hour(s)
- Temperature range (storage): -20 ~ 60 °C
- Humidity range (operation)[RH]: 20~80% RH (No condensation)
- Humidity range (storage) [RH]: 5~95% RH (No condensation)

## Accessories

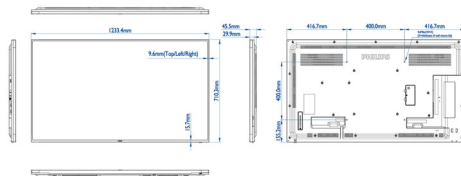
- Included accessories: Remote Control, Batteries for remote control, AC Power Cord, Quick start guide, RS232 cable
- Included Accessories: Edge Alignment Kit (1)-2pcs, Edge Alignment Kit (2)-1pcs, M3 screw (x 1), RS232 daisy-chain cable, SD card cover (x 1), Thumb Screw (x 8)
- Stand: BM05922 (Universal Stand-L)(Option)

## Miscellaneous

- On-Screen Display Languages: English, French, German, Italian, Polish, Turkish, Russian, Spanish, Simplified Chinese, Traditional Chinese, Arabic, Japanese
- Warranty: 3 year warranty

- Regulatory approvals: CE, BSMI, CB, EAC, FCC, Class A, PSB, UL/cUL, EMF, EnergyStar 8.0

Philips 55BDL4031D  
Version: 1.0  
Release Date: 2019/05/27



Issue date 2024-03-24

Version: 7.0.1

EAN: 87 12581 75600 0

© 2024 Koninklijke Philips N.V.  
All Rights reserved.

Specifications are subject to change without notice.  
Trademarks are the property of Koninklijke Philips N.V.  
or their respective owners.

[www.philips.com](http://www.philips.com)