



Philips  
Curved LCD monitor with  
Ultra Wide-Color

**E Line**  
27" (68.6 cm)  
1920 x 1080 (Full HD)

**278E9QSB**

## Stunning color, ultimate immersion

Experience real immersion with Philips Curved monitors. The 27" curved E line monitor offers a truly immersive experience with stunning Full HD image quality. Ultra wide-color tech gives color quality that brings your images alive!

### **Curved design inspired by the world around us**

- Curved display design for more immersive experience

### **Superb Picture Quality**

- Ultra Wide-Color wider range of colors for a vivid picture
- VA display delivers awesome images with wide viewing angles
- 16:9 Full HD display for crisp detailed images

### **Features designed for you**

- Narrow border display for a seamless appearance
- Less eye fatigue with Flicker-free technology
- LowBlue Mode for easy on-the-eyes productivity
- EasyRead mode for a paper-like reading experience

### **Greener everyday**

- Eco-friendly materials meet major international standards
- Low power consumption saves energy bills

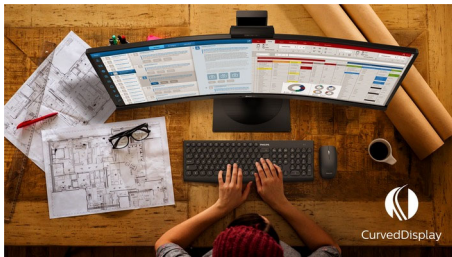
# PHILIPS

Curved LCD monitor with Ultra Wide-Color  
E Line 27" (68.6 cm), 1920 x 1080 (Full HD)

278E9QSB/56

# Highlights

## Curved display design



Desktop monitors offer a personal user experience, which suits a curve design very well. The curved screen provides a pleasant yet subtle immersion effect, which focuses on you at the center of your desk.

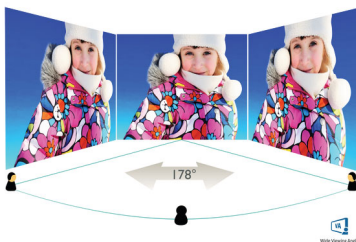
## Ultra Wide-Color Technology



Ultra Wide-Color

Ultra Wide-Color Technology delivers a wider spectrum of colors for a more brilliant picture. Ultra Wide-Color wider "color gamut" produces more natural-looking greens, vivid reds and deeper blues. Bring media entertainment, images, and even productivity more alive and vivid colors from Ultra Wide-Color Technology.

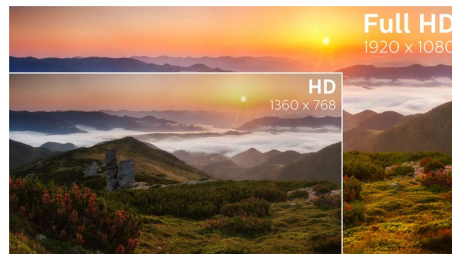
## VA display



Philips VA LED display uses an advanced multi-domain vertical alignment technology which gives you super-high static contrast ratios for extra vivid and bright images. While standard office applications are handled with ease, it is especially suitable for photos, web-browsing, movies, gaming, and demanding graphical

applications. It's optimized pixel management technology gives you 178/178 degree extra wide viewing angle, resulting in crisp images.

## 16:9 Full HD display



Picture quality matters. Regular displays deliver quality, but you expect more. This display features enhanced Full HD 1920 x 1080 resolution. With Full HD for crisp detail paired with high brightness, incredible contrast and realistic colors expect a true to life picture.

## UltraNarrow Border



The new Philips displays feature ultra-narrow borders which allow for minimal distractions and maximum viewing size. Especially suited for multi-display or tiling setup like gaming, graphic design and professional applications, the ultra-narrow border display gives you the feeling of using one large display.

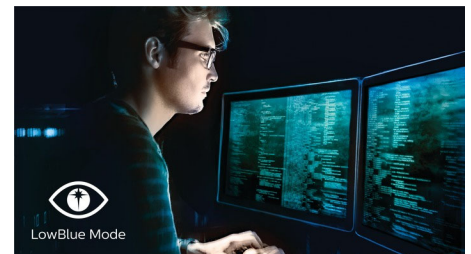
## Flicker-free technology



Due to the way brightness is controlled on LED-backlit screens, some users experience flicker on their screen which causes eye

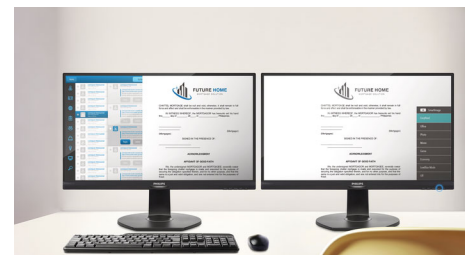
fatigue. Philips Flicker-free Technology applies a new solution to regulate brightness and reduce flicker for more comfortable viewing.

## LowBlue Mode



Studies have shown that just as ultra-violet rays can cause eye damage, shortwave length blue light rays from LED displays can cause eye damage and affect vision over time. Developed for wellbeing, Philips LowBlue Mode setting uses a smart software technology to reduce harmful shortwave blue light.

## EasyRead mode



EasyRead mode for a paper-like reading experience

## Eco-friendly materials

"Philips is committed to use sustainable, eco-friendly materials across its monitor range. All body plastic parts, metal chassis parts and packing materials use 100% recyclable materials. In some selected models we utilize upto 65% post consumer recycled plastics. Strict adherence to RoHS standards ensure substantial reduction or elimination of toxic substances like Lead, for example. Mercury content in monitors with CCFL backlight has been reduced significantly, while eliminated in monitors with LED backlight completely.



# Specifications

## Picture/Display

- LCD panel type: VA LCD
- Backlight type: W-LED system
- Panel Size: 27 inch / 68.6 cm
- Display Screen Coating: Anti-Glare, 3H, Haze 25%
- Effective viewing area: 597.9 (H) x 336.3 (V) - at a 1800R curvature\*
- Aspect ratio: 16:9
- Optimum resolution: 1920 x 1080 @ 60 Hz
- Pixel Density: 82 PPI
- Response time (typical): 4 ms (Gray to Gray)\*
- Brightness: 250 cd/m<sup>2</sup>
- Contrast ratio (typical): 3000:1
- SmartContrast: 20,000,000:1
- Pixel pitch: 0.311 x 0.311 mm
- Viewing angle: 178° (H) / 178° (V), @ C/R > 10
- Flicker-free
- Picture enhancement: SmartImage Lite
- Color gamut (typical): NTSC 102%\*, sRGB 128%\*
- Display colors: 16.7 M
- Scanning Frequency: 30 - 83 kHz (H) / 50 - 76 Hz (V)
- sRGB
- EasyRead
- LowBlue Mode

## Connectivity

- Signal Input: VGA (Analog), DVI-D (digital, HDCP)
- Sync Input: Separate Sync, Sync on Green

## Convenience

- User convenience: Power On/Off, Menu, Brightness, Input, SmartImage lite
- OSD Languages: Brazil Portuguese, Czech, Dutch, English, Finnish, French, German, Greek, Hungarian, Italian, Japanese, Korean, Polish, Portuguese, Russian, Simplified Chinese, Spanish, Swedish, Traditional Chinese, Turkish, Ukrainian
- Other convenience: Kensington lock, VESA mount (100x100mm)
- Plug & Play Compatibility: DDC/CI, Mac OS X, sRGB, Windows 10 / 8.1 / 8 / 7

## Stand

- Tilt: -5/20 degree

## Power

- On mode: 35.11 W (typ.)
- Standby mode: < 0.5 W (typ.)
- Off mode: < 0.3 W (typ.)
- Power LED indicator: Operation - White, Standby mode- White (blinking)
- Power supply: External, 100-240VAC, 50-60Hz

## Dimensions

- Product with stand (mm): 612 x 457 x 189 mm
- Product without stand (mm): 612 x 368 x 58 mm
- Packaging in mm (WxHxD): 730 x 525 x 196 mm

## Weight

- Product with stand (kg): 4.89 kg
- Product without stand (kg): 4.19 kg
- Product with packaging (kg): 7.48 kg

## Operating conditions

- Temperature range (operation): 0 to 40 °C
- Temperature range (storage): -20 to 60 °C
- Relative humidity: 20%-80 %
- Altitude: Operation: +12,000ft (3,658m), Non-operation: +40,000ft (12,192m)
- MTBF: 50,000 hrs (excluding backlight) hour(s)

## Sustainability

- Environmental and energy: RoHS, Mercury Free
- Recyclable packaging material: 100 %

## Compliance and standards

- Regulatory Approvals: CCC, CECP, CEL, CE Mark, TUV/ISO9241-307

## Cabinet

- Color: Black / Silver
- Finish: Glossy



Issue date 2022-04-21

Version: 1.0.1

12 NC: 8670 001 66308  
EAN: 87 12581 76573 6

© 2022 Koninklijke Philips N.V.  
All Rights reserved.

Specifications are subject to change without notice.  
Trademarks are the property of Koninklijke Philips N.V.  
or their respective owners.

[www.philips.com](http://www.philips.com)

\* Radius of the arc of the display curvature in mm

\* Response time value equal to SmartResponse

\* NTSC Area based on CIE1976

\* sRGB Area based on CIE1931

\* The monitor may look different from feature images.