

Philips
LCD monitor with
SoftBlue Technology

E Line

24 (Viewable 23.6" / 59.9 cm)
1920 x 1080 (Full HD)



247E6BDAD

Vivid colors, crisp details

in an elegant design

Designed for you: The elegant new Philips E-line monitor features new SoftBlue Technology for easy on the eyes brilliantly colored images.

Elegant Design

- Elegant, slim design complements your home decor
- Superb black cherry glossy finish
- Modern Touch controls complement the design

Superb Picture Quality

- SmartControl Lite: For quick and easy display tuning
- LED technology for natural colors
- SmartImage Lite for easy optimized image settings
- SmartContrast for deep black level details
- 16:9 Full HD display for crisp detailed images
- SoftBlue Technology easy on the eyes and maintains color

Experience immersive multimedia

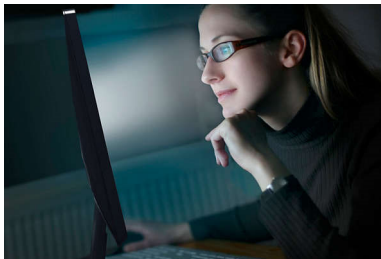
- MHL technology for enjoying mobile content on big screen
- Built-in stereo speakers for multimedia

PHILIPS

LCD monitor with SoftBlue Technology
E Line 24 (Viewable 23.6" / 59.9 cm), 1920 x 1080 (Full HD)

Highlights

SoftBlue Technology

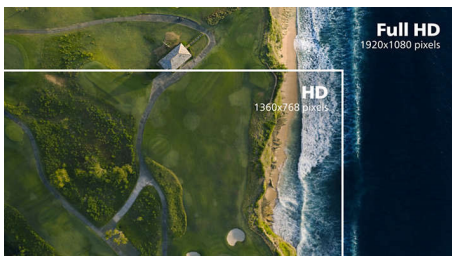


SoftBlue LED technology uses a smart technology to reduce harmful shortwave blue light without affecting the color or image of the display. SoftBlue LED technology is certified by international testing organizations TUV Rheinland to reduce harmful blue light.

LED technology

White LED's are solid state devices which light up to full, consistent brightness faster saving startup time. LED's are free from mercury content which allows for eco-friendly recycling and disposal process. LED's allow for better dimming control of LCD backlight, resulting in super high contrast ratio. It also gives superior color reproduction thanks to consistent brightness across the screen.

16:9 Full HD display



Picture quality matters. Regular displays deliver quality, but you expect more. This display features enhanced Full HD 1920 x 1080 resolution. With Full HD for crisp detail paired with high brightness, incredible contrast and realistic colors expect a true to life picture.

SmartImage Lite

SmartImage Lite is an exclusive, leading edge Philips technology that analyzes the content displayed on your screen. Based on a scenario

you select, SmartImage Lite dynamically enhances the contrast, color saturation and sharpness of images and videos for ultimate display performance - all in real time with the press on a single button.

SmartControl Lite

SmartControl Lite is the next generation 3D icon based GUI monitor control software. This allows user to fine-tune most parameters of the monitor like Color, Brightness, screen calibration, Multi-media, ID management, etc with the mouse.

SmartContrast



SmartContrast is a Philips technology that analyzes the contents you are displaying, automatically adjusting colors and controlling backlight intensity to dynamically enhance contrast for the best digital images and videos or when playing games where dark hues are displayed. When Economy mode is selected, contrast is adjusted and backlighting fine-tuned for just-right display of everyday office applications and lower power consumption.

Modern Touch controls



Touch controls are intelligent, touch sensitive icons that replace protruding buttons that lets the user adjust the monitor to their requirement. Responding to your lightest

247E6BDAD/27

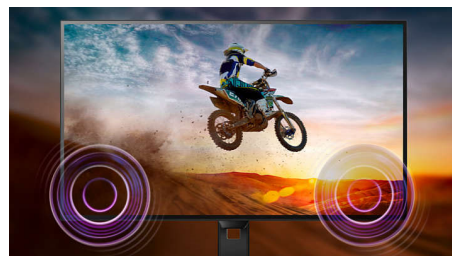
touch, Touch control gives the monitor a modern feel.

MHL technology



Mobile High Definition Link (MHL) is a mobile audio/video interface for directly connecting mobile phones and other portable devices to high-definition displays. An optional MHL cable allows you to simply connect your MHL capable mobile device to this large Philips MHL display, and watch your HD videos come to life with full digital sound. Now not only you can enjoy your mobile games, photos, movies, or other apps on its big screen, you can simultaneously charge your mobile device so you never run out of power half way.

Built-in stereo speakers



A pair of high quality stereo speakers built into a display device. It can be visible front firing, or invisible down firing, top firing, rear firing, etc depending on model and design.

Slim design

Elegant, slim design complements your home decor

Superb black cherry

Superb black cherry glossy finish



Specifications

Connectivity

- Signal Input: VGA (Analog), DVI-D (digital, HDCP), MHL-HDMI (digital, HDCP)
- Sync Input: Separate Sync, Sync on Green
- Audio (In/Out): PC audio-in, Headphone out

Picture/Display

- Panel Size: 23.6" / 59.9 cm
- Aspect ratio: 16:9
- LCD panel type: TFT-LCD
- Backlight type: W-LED system
- Pixel pitch: 0.2715 x 0.2715 mm
- Optimum resolution: 1920 x 1080 @ 60Hz
- Brightness: 250 cd/m²
- Display colors: 16.7 M
- Contrast ratio (typical): 1000:1
- SmartContrast: 20,000,000:1
- Response time (typical): 5 (Grey to Grey) ms
- Viewing angle: 170° (H) / 160° (V), @ C/R > 10
- Picture enhancement: SmartImage Lite
- Effective viewing area: 521.28 (H) x 293.22 (V)
- Scanning Frequency: 30 -83 kHz (H) / 56 -75 Hz (V)
- sRGB
- SmartResponse (typical): 2ms (Grey to Grey)
- MHL: 1080p@30Hz
- SoftBlue

Convenience

- Built-in Speakers: 3 W x 2
- Plug & Play Compatibility: DDC/CI, Mac OS X, sRGB, Windows 7, Windows 8
- User convenience: Power On/Off, Menu, Input, SmartImage lite, Volume
- OSD Languages: Brazil Portuguese, Czech, Dutch, English, Finnish, French, German, Greek, Hungarian, Italian, Japanese, Korean, Polish, Portuguese, Russian, Simplified Chinese, Spanish, Swedish, Traditional Chinese, Turkish, Ukrainian
- Other convenience: Kensington lock

Stand

- Tilt: -5/20 degree

Power

- Power supply: External, 100-240VAC, 50-60Hz

- Off mode: 0.3 W (typ.)
- On mode: 17.44 W (typ.) (EnergyStar 6.0 test method)
- Standby mode: 0.5 W (typ.)
- Power LED indicator: Operation - White, Standby mode- White (blinking)

Dimensions

- Product with stand (mm): 561 x 429 x 212 mm
- Product with stand in inch: 22.1 x 16.9 x 1.3 inch
- Packaging in mm (WxHxD): 598 x 490 x 100 mm
- Product without stand (mm): 561 x 347 x 43 mm
- Packaging in inch (WxHxD): 23.5 x 19.3 x 3.9 inch
- Product without stand in inch: 22.1 x 13.7 x 1.7 inch

Weight

- Product with packaging (kg): 4.90 kg
- Product with stand (kg): 3.65 kg
- Product with packaging (lb): 10.78 lb
- Product with stand (lb): 8.03 lb
- Product without stand (kg): 3.27 kg
- Product without stand (lb): 7.19 lb

Operating conditions

- Altitude: Operation: +12,000ft (3,658m), Non-operation: +40,000ft (12,192m)
- Temperature range (operation): 0°C to 40°C °C
- MTBF: 30,000 hour(s)
- Relative humidity: 20%-80 %
- Temperature range (storage): -20°C to 60°C °C

Sustainability

- Environmental and energy: EnergyStar 6.0, RoHS, Mercury Free
- Recyclable packaging material: 100 %

Compliance and standards

- Regulatory Approvals: BSMI, CE Mark, cETLus, FCC Class B, GOST, PSB, SASO, SEMKO, TUV/ISO9241-307, WEEE

Cabinet

- Color: Black Cherry
- Finish: Glossy



Issue date 2024-03-24

Version: 7.0.1

UPC: 6 09585 24473 3

© 2024 Koninklijke Philips N.V.
All Rights reserved.

Specifications are subject to change without notice.
Trademarks are the property of Koninklijke Philips N.V.
or their respective owners.

www.philips.com

* This Philips display is MHL certified. However, in case your MHL device does not connect or work correctly, check with your MHL device FAQ or vendor directly for direction. The policy of your device manufacturer may require you to purchase their brand specific MHL cable or adapter in order to work

* Requires optional MHL certified mobile device and MHL cable. (not included) Please check with your MHL device vendor for compatibility.

* Standby/Off energy saving of ErP is not applicable for the MHL charging functionality

* For complete list of MHL-enabled products refer to www.mhlconsortium.org

* Smart response time is the optimum value from either GtG or GtG (BW) tests.