



Philips Evnia Curved  
Gaming Monitor  
QD OLED gaming monitor

### Evnia 8000

34" (86.36 cm)  
3440 x 1440 (WQHD)



34M2C8600

## Gaming beyond innovation

Be prepared to get stunned by the precise color reproduction of Evnia QD OLED gaming monitor. The innovative Ambiglow redefines what gaming environment usually is. You won't miss a thing in your game with our curved display.

#### Built for fast action

- VESA ClearMR 9000: for the highest-quality of imagery
- AMD FreeSync™ Premium Pro; smooth, low latency HDR gaming
- SmartImage game mode optimized for gamers

#### Immersive visuals

- QD OLED for superior colors and vibrant visuals
- Curved display design for more immersive experience
- DisplayHDR™ TrueBlack 400 delivers incredible shadow details
- Ultra Wide-Color wider range of colors for a vivid picture
- True 10-bit display reproduces smoother gradients on visuals
- CrystalClear images with UltraWide QHD 3440 x 1440 pixels

#### Features designed for gamers needs

- LowBlue mode and Flicker-free easy-on-the eyes viewing
- Enhanced audio with DTS Sound™
- Access and display multiple sources on two devices

EVNIA

PHILIPS

QD OLED gaming monitor  
Evia 8000 34" (86.36 cm), 3440 x 1440 (WQHD)

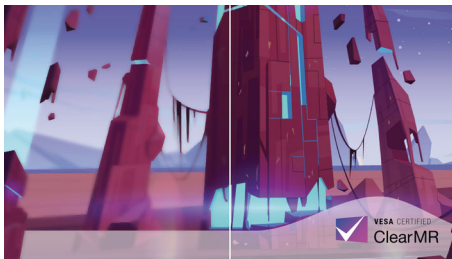
# Highlights

## QD OLED technology



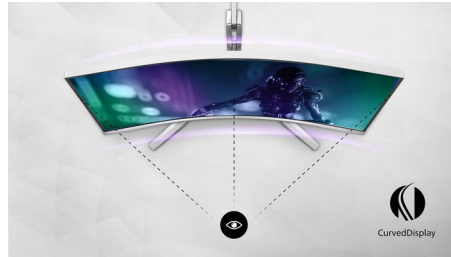
QD-OLED represents a hybrid approach that marries the OLED panels and quantum dot technology. By combining what's best of both, QD-OLED guarantees high contrast, deep blacks, and unlimited viewing angles, with the higher peak brightness and more vibrant colors.

## VESA ClearMR 9000



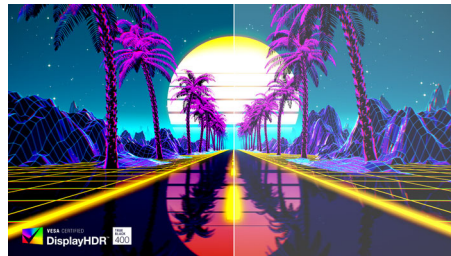
Previously, methods to test blurry imagery were measured through MRPT. VESA Certified ClearMR acts as an alternative to MRPT and blur is tested with a digital high-speed camera. For monitors that are sent in and certified through VESA Certified ClearMR, you can rest assured that you will have an accurate assessment of the monitor's blur quality. Each certification is defined through a CMR range, with the highest tier being VESA ClearMR 9000. With this monitor being certified as ClearMR 9000, it has the highest classification of image quality, meaning the least amount of overall blur.

## Curved display design



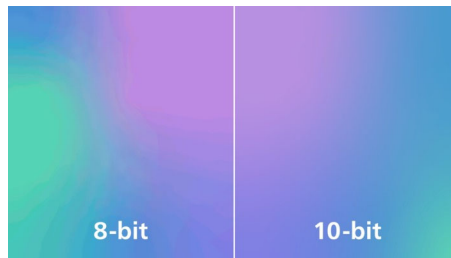
Desktop monitors offer a personal user experience, which suits a curve design very well. The curved screen provides a pleasant yet subtle immersion effect, which focuses on you at the center of your desk.

## DisplayHDR™ True Black 400



This Philips monitor is certified with VESA DisplayHDR™ True Black 400. Delivering stunningly accurate shadow detail with deeper blacks for a remarkable visual experience compared with conventional monitors of the same peak luminance. This Philips monitor comes with several HDR modes, each optimized for your usage scenarios: HDR Game, HDR Movie, HDR Photo, and VESA DisplayHDR certified level.

## True 10-bit color depth

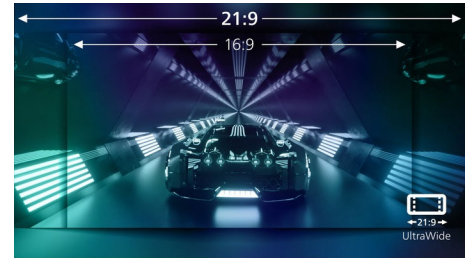


With this Philips true 10-bit color display, you can see color critical professional work of

34M2C8600/01

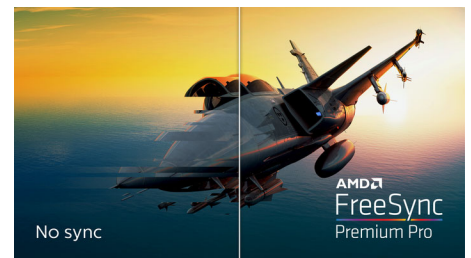
exceptional color accuracy and meeting professional standards. Compared with conventional 8-bit color display, this Philips monitor produces a more natural transition between hues for smoother gradients.

## UltraWide CrystalClear images



These Philips screens deliver CrystalClear, UltraWide Quad HD 3440 x 1440 pixel images. Utilizing high performance panels with high-density pixel count, 178/178 wide viewing angles, these new displays will make your images and graphics come alive. The UltraWide 21:9 format enables more productivity with more room for side-by-side comparisons and more viewable spreadsheet columns. Whether you are demanding professional requiring extremely detailed information for CAD-CAM solutions, or a financial wizard working on huge spreadsheets, Philips displays delivers CrystalClear images.

## AMD FreeSync™ Premium Pro



Gaming shouldn't be a choice between choppy gameplay or broken frames. AMD FreeSync™ Premium Pro provides the true HDR gaming experience: a combination of smooth gaming at peak performance, and exceptional high dynamic range visuals while still maintaining low latency.

QD OLED

VESA CERTIFIED  
ClearMR 9000

Low Input Lag

21:9  
Curved  
Ultrawide

VESA CERTIFIED  
DisplayHDR 400

WQHD

AMD  
FreeSync  
Premium Pro

MultiClient  
Integrated KVM

USB-C

# Specifications

## Picture/Display

- Monitor Panel Type: QD OLED
- Panel Size: 34 inch / 86.36 cm
- Display Screen Coating: Anti-reflection, 2H
- Effective viewing area: 800.1 (H) x 337.1 (V) - at a 1800R curvature\*
- Pixel format: RGB Q-Stripe\*
- Aspect ratio: 21:9
- Maximum resolution: HDMI: 3440 x 1440 @ 100 Hz, DP/USB-C: 3440 x 1440 @ 175 Hz
- Pixel Density: 109.68 PPI
- Response time (typical): 0.03 ms (Gray to Gray)\*
- Low Input Lag
- Brightness: SDR: 250 (APL 100%) nit, HDR: 450 (APL 10%) nit, HDR E/P: 1000 (APL 3%) nit
- SmartContrast: Mega Infinity DCR
- Contrast ratio (typical): 1,000,000:1
- Pixel pitch: 0.2315 x 0.2315 mm
- Viewing angle: 178° (H) / 178° (V), @ C/R > 10000
- Flicker-free
- HDR: DisplayHDR True Black 400 certified
- Color gamut (min.): DCI-P3: 99.3%\*
- Color gamut (typical): NTSC 121.3%\*, sRGB 148.8%\*, Adobe RGB 97.8%\*
- Picture enhancement: SmartImage game
- Display colors: Color support 1.07 billion colors (10 bit)
- Scanning Frequency: HDMI: 30 - 160 kHz (H) / 48 - 100 Hz (V), DP/USB-C: 30 - 255 kHz (H) / 48 - 175 Hz (V)
- LowBlue Mode
- EasyRead
- Delta E: <2 (sRGB)
- sRGB
- Adaptive sync
- Ambiglow: 4-sided

## Connectivity

- Signal Input: HDMI 2.0 x 2, DisplayPort 1.4 x 1, USB-C x 1 (DP Alt mode, Video, Data and Power Delivery)
- HDCP: HDCP 1.4 (HDMI / DisplayPort / USB-C), HDCP 2.2 (HDMI / DisplayPort / USB-C), HDCP 2.3 (HDMI / DisplayPort / USB-C)
- USB Hub: USB 3.2 Gen 1 / 5 Gbps, USB-B upstream x 1, USB-A downstream x 4 (with 1 for fast charge B.C 1.2)
- Audio (In/Out): Audio out
- Sync Input: Separate Sync

## Power Delivery

- Version: USB PD version 3.0
- Max power delivery: USB-C up to 90 W (5V/3A, 7V/3A, 9V/3A, 10V/3A, 12V/3A, 15V/3A, 20V/4.5A)

## Convenience

- Built-in Speakers: 5 W x 2, DTS
- MultiView: PIP/PBP mode, 2x devices
- KVM
- User convenience: Power On/Off, Menu/OK, Input/Up, Game Settings/Down, SmartImage game/Back
- OSD Languages: Brazil Portuguese, Czech, Dutch,

- English, Finnish, French, German, Greek, Hungarian, Italian, Japanese, Korean, Polish, Portuguese, Russian, Spanish, Simplified Chinese, Swedish, Turkish, Traditional Chinese, Ukrainian
- Other convenience: Kensington lock, VESA mount (100x100mm), VESA bracket
- Plug & Play Compatibility: DDC/CI, Mac OS X, sRGB, Windows 11 / 10 / 8.1 / 8 / 7
- Low blue light: Low blue light compliance\*

## Stand

- Height adjustment: 150 mm
- Swivel: -/+ 20 degree
- Tilt: -5/20 degree

## Power

- On mode: 113.6 W (typ.)
- Standby mode: 0.5 W (typ.)
- Off mode: 0.3 W (typ.)
- Energy Label Class: G
- Power LED indicator: Operation - White, Standby mode- White (blinking)
- Power supply: Internal, 100-240VAC, 50-60Hz

## Dimensions

- Product with stand(max height): 813 x 553 x 295 mm
- Product without stand (mm): 813 x 367 x 135 mm
- Packaging in mm (WxHxD): 930 x 525 x 282 mm

## Weight

- Product with stand (kg): 8.70 kg
- Product without stand (kg): 6.80 kg
- Product with packaging (kg): 12.49 kg

## Operating conditions

- Temperature range (operation): 0°C to 40 °C
- Temperature range (storage): -20°C to 60 °C
- Relative humidity: 20%-80 %
- Altitude: Operation: +12,000ft (3,658m), Non-operation: +40,000ft (12,192m)
- MTBF: 30,000 hour(s)

## Sustainability

- Environmental and energy: RoHS
- Recyclable packaging material: 100 %
- Specific Substances: Mercury free, PVC / BFR free housing

## Compliance and standards

- Regulatory Approvals: CB, CE Mark, FCC Class B, ICES-003, CU-EAC, EAEU RoHS, TUV/ISO9241-307, TUV-BAUART, cETLus

## Cabinet

- Color: White
- Finish: Textured

## What's in the box?

- Monitor with stand
- Cables: HDMI cable, DisplayPort cable, USB upstream cable, USB-C to USB-C cable, Power cable, VESA bracket
- User Documentation

\* Radius of the arc of the display curvature in mm

\* Active pixels: 3440 (H) x 1440 (V). Number of total pixels: 3456 (H) x 1456 (V); extra 8 pixels on each side, space reserved for pixel orbiting.

\* Response time value equal to SmartResponse. The measurement pattern is 1 horizontal line.

\* For best output performance, please always ensure that your graphic card is capable of achieving the maximum resolution and refresh rate of this Philips display.

\* DCI-P3 Coverage based on CIE1976

\* NTSC Area based on CIE1976

\* sRGB Area based on CIE1931

\* Adobe RGB Coverage based on CIE1976

\* For USB-C power and charging function, your Notebook/device must support USB-C standard Power Delivery specifications. Please check with your Notebook user manual or manufacturer for more details.

\* For Video transmission via USB-C, your Notebook/device must support USB-C DP Alt mode

\* The ratio of display emission light in the range from 415 - 455 nm to the display emission of 400 - 500 nm shall be less than 50%.

\* The monitor may look different from feature images.