



Philips Brilliance
LCD monitor with
Webcam, MultiView

- Quad HD
- 27" / 68.6cm
- 2560 x 1440 display

Brilliance

272P4QPJKES



Crystalclear images, maximum productivity

with MultiView

This professional Philips PLS display delivers Crystalclear Quad HD 2560x1440 images. MultiView enhances productivity with active dual connect and view. Webcam enables collaboration saving time and money

Brilliant performance

- PLS Quad HD technology ensures 8 bit color, 109 ppi images
- Crystalclear images with Quad HD 2560x1440 pixels
- MultiView enables active dual connect and view at same time
- Webcam with mic to connect and collaborate
- SmartConnect with HDMI, Display port and Dual link DVI
- Display Port for daisy chain multi-display usage
- USB 3.0 enables fast data transfers and smart phone charging
- Built-in stereo speakers for multimedia

Sustainable Eco-design

- PowerSensor saves up to 80% energy costs
- 65% post consumer recycled plastics with TCO Edge

Designed for people

- SmartErgoBase enables people-friendly ergonomic adjustments
- Low bezel-to-table height for maximum reading comfort

PHILIPS

Highlights

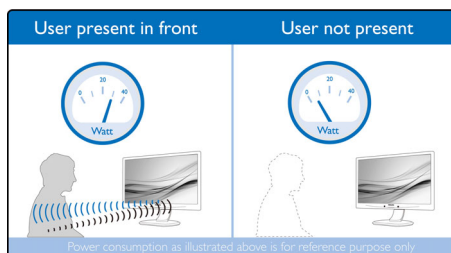
PLS Quad HD

This professional Philips display uses latest PLS Quad HD panel giving you ultra high-res brilliant wide angle images with 2560x1440 pixel resolution. With excellent 8 bit color depth combined with 109 ppi density, you can now enjoy professional true color sRGB images compared to limited 6 bit color depth displays with 82ppi density. Its higher brightness and lower power consumption relative to conventional wide view angle displays ensure you always have brilliant performance, while saving energy too. It's best suited for professional applications like CAD, Graphics design, Image rendering etc

Crystalclear images

These latest Philips screens deliver Crystalclear, Quad HD 2560x1440 or 2560x1080 pixel images. Utilizing high performance panels with high density pixel count, 178/178 wide viewing angles, enabled by high bandwidth sources like Displayport, HDMI, Dual link DVI or optional Thunderbolt, these new displays will make your images and graphics come alive. Whether you are demanding professional requiring extremely detailed information for CAD-CAM solutions, using 3D graphic applications or a financial wizard working on huge spreadsheets, Philips displays will give you Crystalclear images.

PowerSensor



PowerSensor is a built-in 'people sensor' that transmits and receives harmless infrared signals to determine if user is present and automatically reduces monitor brightness when user steps away from the desk, cutting energy costs by up to 80 percent and prolonging monitor life

Webcam

Embedded webcam and microphone enables you to view and communicate with your colleagues and clients. This simple solution allows you to collaborate and share, saving precious time and travel related costs.

MultiView technology

With the ultra high resolution Philips MultiView display you can now experience a world of connectivity in a comfortable way whether at office or at home. MultiView enables active dual connect and view so that you can work with multiple devices like PC and Notebook side-by-side simultaneously, making complex multi-tasking work a breeze. Watching live football feed from your set-top box on right side, while browsing the Internet from your notebook on the left is now easy. You may want to keep an eye on the live news feed with audio in the small window, while working on your latest blog.

Display Port with Daisy Chain

This Philips display employs Display port 1.2a Multi Stream Transport (MST) technology with HBR2, which doubles the data throughput to 21.6 Gbps. This enables it to daisy chain multiple monitors, thereby increasing your efficiency dramatically. This daisy chain, multi-monitor capability makes this Philips display especially suitable for use in Finance, Banking, control room and other similar environment. To make use of this feature, your PC Graphics Card must be certified to DP1.2 with MST option. For detailed information, please visit <http://www.displayport.org/>

SmartConnect

With a plethora of connectivity, these Philips displays come equipped with multi connections like Dual link DVI, Display Port, universal HDMI connector, enabling you to enjoy high resolution uncompressed video and audio content. USB 3.0 option ensures that you can have super speed data transfers while having global connectivity. Regardless of what source you use, you can rest assured that this Philips display will ensure your investment is not made obsolete any time soon!

SmartErgoBase

The SmartErgoBase is a monitor base that delivers ergonomic display comfort and provides cable management. The base's people-friendly height, swivel, tilt and rotation angle adjustments position the monitor for maximum comfort that can ease the physical strains of a long workday; cable management reduces cable clutter and keeps the workspace neat and professional.

USB 3.0 super speed

Super Speed USB 3.0 deploys 5.0 gbit/s transfer rate, which is about 10 times faster than USB 2.0 standard significantly reducing data transfer time saving you time and money. With more bandwidth, super speed transfer rates, better power management and superior overall performance, USB 3.0 sets the latest global standard allowing you to use the large capacity storage devices. Sync-N-Go technology ensures you don't have to wait anymore for bandwidth to be freed up. Your investment in USB 2.0 devices is protected as it is backward compatible.

Built-in stereo speakers

A pair of high quality stereo speakers built into a display device. It can be visible front firing, or invisible down firing, top firing, rear firing, etc depending on model and design.

Low bezel-to-table height



The Philips monitor, thanks to its advanced SmartErgoBase, can be lowered down almost to desk level for a comfortable viewing angle. Low bezel-to-table height is the perfect solution if you use bifocals, trifocals or progressive lens glasses for your computing work. Additionally, it allows for users with greatly different heights to use the monitor in their preferred angle and height settings, helping them reduce fatigue and strain.



Specifications

Picture/Display

- LCD panel type: PLS LCD
- Backlight type: W-LED system
- Panel Size: 27 inch / 68.6 cm
- Effective viewing area: 596.74 (H) x 335.66 (V)
- Aspect ratio: 16:9
- Optimum resolution: 2560 x 1440 @ 60Hz
- Response time (typical): 12 ms
- SmartResponse (typical): 6 ms (Gray to Gray)
- Brightness: 300 cd/m²
- Contrast ratio (typical): 1000:1
- SmartContrast: 20,000,000 :1
- Pixel pitch: 0.233 x 0.233 mm
- Viewing angle: 178° (H) / 178° (V), @ C/R > 10
- Picture enhancement: SmartImage
- Display colors: 16.7 M (True 8 bit)
- Scanning Frequency: 30 - 90 kHz (H) / 56 - 75 Hz (V)
- sRGB

Connectivity

- USB: USB 3.0 x 3
- Signal Input: DVI-Dual Link (digital, HDCP), DisplayPort, HDMIx2
- Sync Input: Separate Sync, Sync on Green
- Audio In/Out: PC audio-in, Headphone out

Convenience

- Built-in Speaker: 2Wx2
- Built-in webcam: 2.0 megapixel camera with microphone and LED indicator
- MultiView: PiP/PbP mode, 2x devices
- User convenience: SmartImage, Menu, Multiview, Power On/Off, User
- Control software: SmartControl Premium
- OSD Languages: Brazil Portuguese, Czech, Dutch, English, Finnish, French, German, Greek, Hungarian, Italian, Japanese, Polish, Portuguese, Russian, Simplified Chinese, Spanish, Swedish, Traditional Chinese, Turkish, Ukrainian
- Other convenience: Kensington lock, VESA mount (100x100mm)
- Plug & Play Compatibility: DDC/CI, Mac OS X, sRGB, Windows 8/7/XP

Stand

- Height adjustment: 150 mm
- Pivot: 90 degree
- Swivel: -65/65 degree
- Tilt: -5/20 degree

Power

- ECO mode: 23 W (typ.)
- On mode: 39.2 W (typ.) (EnergyStar 6.0 test method)
- Standby mode: 0.3W (typ.)
- Off mode: Zero watts with Zero switch
- Power LED indicator: Operation - White, Standby mode- White (blinking)
- Power supply: 100-240VAC, 50-60Hz, Built-in

Dimensions

- Product with stand(max height): 639 x 580 x 242 mm
- Product without stand (mm): 639 x 405 x 64 mm
- Packaging in mm (WxHxD): 750 x 234 x 490 mm

Weight

- Product with stand (kg): 8.5 kg
- Product without stand (kg): 5.7 kg
- Product with packaging (kg): 11.35 kg

Operating conditions

- Temperature range (operation): 0°C to 40°C °C
- Temperature range (storage): -20°C to 60°C °C
- Relative humidity: 20%-80 %
- Altitude: Operation: +12,000ft (3,658m), Non-operation: +40,000ft (12,192m)
- MTBF: TBC hour(s)

Sustainability

- Environmental and energy: EPEAT Gold*, PowerSensor, EnergyStar 6.0, RoHS, TCO edge
- Recyclable packaging material: 100 %
- Post consumer recycled plastic: 65%
- Specific Substances: PVC / BFR free housing, Mercury free, Lead free

Compliance and standards

- Regulatory Approvals: BSMI, CE Mark, FCC Class B, GOST, SASO, SEMKO, TCO 6.0, TUV Ergo, TUV/GS, UL/cUL, WEEE

Cabinet

- Front bezel: Silver
- Rear cover: Black
- Foot: Black
- Finish: Texture



Issue date 2013-06-08

Version: 5.0.1

12 NC: 8670 000 93316
EAN: 87 12581 65481 8

© 2013 Koninklijke Philips N.V.
All Rights reserved.

Specifications are subject to change without notice.
Trademarks are the property of Koninklijke Philips N.V.
or their respective owners.

www.philips.com

* EPEAT Gold is valid only where Philips registers the product. Please visit www.epeat.net for registration status in your country.