

PHILIPS

LCD monitor with
SoftBlue Technology

S Line

22 (21.5"/54.6 cm diag.)

1920 x 1080 (Full HD)

223S7EJMB



Reliable and essential features

that drive business efficiency

Our S Line monitor delivers business efficiency. A wide-view IPS display with SoftBlue technology is great for easy-on-the-eyes productivity. The height-adjustable, frameless display allows for tiling multiple monitors for an expanded view.

Brilliant performance

- SmartImage pre-sets for easy optimised image settings
- IPS technology for full colours and wide viewing angles
- 16:9 Full HD display for crisp, detailed images
- Narrow-border display for a seamless appearance

Features for the way you work

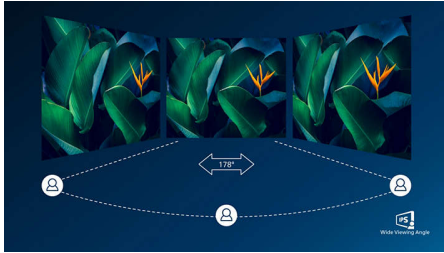
- Built-in stereo speakers for multimedia
- SmartConnect with DisplayPort, HDMI and VGA connections

Designed for comfortable productivity

- Low bezel-to-table height for maximum reading comfort
- SmartErgoBase enables user-friendly ergonomic adjustments
- EasyRead mode for a paper-like reading experience
- SoftBlue Technology is easy on the eyes and maintains colour
- Less eye fatigue with Flicker-Free technology

Highlights

IPS technology



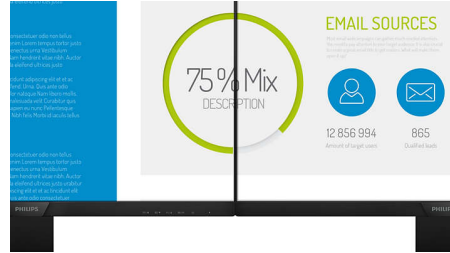
IPS displays use advanced technology that gives you extra-wide viewing angles of 178/178 degrees, making it possible to view the display from almost any angle — even in 90-degree Pivot mode! Unlike standard TN panels, IPS displays gives you remarkably crisp images with vivid colours, making it ideal not only for Photos, films and web browsing, but also for professional applications that demand colour accuracy and consistent brightness at all times.

SmartImage



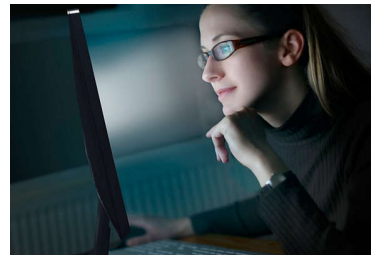
SmartImage is an exclusive leading edge Philips technology that analyses the content displayed on your screen and optimises your display performance. This user-friendly interface allows you to select various modes, like Office, Photo, Movie, Game, Economy etc., to fit the application in use. Based on the selection, SmartImage dynamically optimises the contrast, colour saturation and sharpness of images and videos for ultimate display performance. The Economy mode option offers you major power savings. All in real time at the touch of a single button!

Ultra-narrow Border



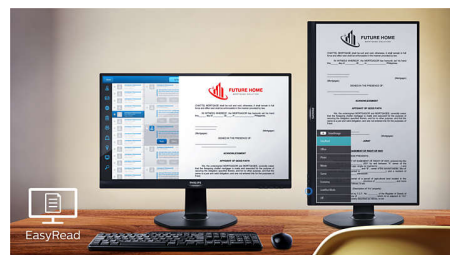
The new Philips displays feature ultra-narrow borders which allow for minimal distractions and maximum viewing size. Especially suited for multi-display or tiling setups like gaming, graphic design and professional applications, the ultra-narrow border display gives you the feeling of using one large display.

SoftBlue Technology



SoftBlue LED technology uses smart technology to reduce harmful shortwave blue light without affecting the colour or image of the display. SoftBlue LED technology is certified by international testing organisation TUV Rheinland to reduce harmful blue light.

EasyRead mode



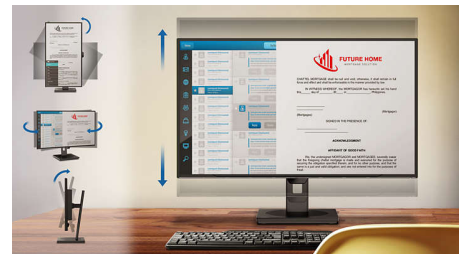
EasyRead mode for a paper-like reading experience

Flicker-Free technology



Due to the way brightness is controlled on LED-backlit screens, some users experience flicker on their screen which causes eye fatigue. Philips Flicker-Free technology applies a new solution to regulate brightness and reduce flicker for more comfortable viewing.

SmartErgoBase



The SmartErgoBase is a monitor base that delivers ergonomic display comfort and provides cable management. The base can swivel, tilt and rotate to various angles to ensure maximum comfort. The height-adjustable stand guarantees the optimal viewing level, reducing the physical strains of a long workday, while cable management reduces cable clutter and keeps the workspace neat and professional.

Built-in stereo speakers



A pair of high-quality stereo speakers built into a display device. They may be visible front firing, or invisible down firing, top firing, rear firing etc. depending on model and design.



Wide Viewing Angle



SmartImage™



Ultra Narrow Bezel



SoftBlue Technology



EasyRead



Flicker-free



SmartErgo Base



Built-in Speaker

Highlights

SmartConnect

With a plethora of connectivity, these Philips displays come equipped with multiple connections like VGA, Display Port and universal HDMI connector, enabling you to enjoy high-resolution uncompressed video and audio content. USB connections ensure that you can have super-speed data transfers while having global connectivity. Regardless of what source you use, you can rest assured that this Philips display will ensure your investment is not made obsolete any time soon!

16:9 Full HD display



Picture quality matters. Regular displays deliver quality, but you expect more. This display features enhanced Full HD 1920 x 1080 resolution. With Full HD for crisp detail paired with high brightness, incredible contrast and realistic colours, expect a true-to-life picture.

Low bezel-to-table height



Thanks to its advanced SmartErgoBase, the Philips monitor can be lowered down almost to desk level for a comfortable viewing angle. Low bezel-to-table height is the perfect solution if you use bifocals, trifocals or progressive lens glasses for your computing work. Additionally, it allows users of different heights to use the monitor at their preferred angle and height settings, helping them to reduce fatigue and strain.



Specifications

Picture/Display

Panel Size: 21.5 inch/54.6 cm
Aspect ratio: 16:9
LCD panel type: IPS technology
Backlight type: W-LED system
Pixel pitch: 0.248 x 0.248 mm
Optimum resolution: 1920 x 1080 @ 60 Hz
Brightness: 250 cd/m²
Display colours: 16.7 M
Colour gamut (typical): NTSC 80%*, sRGB 99%*
Contrast ratio (typical): 1000:1
SmartContrast: 20,000,000:1
Response time (typical): 5 ms (Grey to Grey)*
Viewing angle: 178° (H)/178° (V), @ C/R > 10
Picture enhancement: SmartImage
Effective viewing area: 476.1 (H) x 267.8 (V)
Scanning Frequency: 30 - 83 kHz (H) / 56 - 76 Hz (V)
sRGB
SoftBlue
Flicker-free
Pixel Density: 102 PPI
EasyRead

Connectivity

Signal Input: VGA (Analogue), HDMI 1.4, DisplayPort 1.2
USB: USB 2.0 x 4
Sync Input: Separate Sync, Sync on Green
Audio (In/Out): PC audio-in, Headphone out

Convenience

Built-in Speakers: 2 W x 2
Plug and Play Compatibility: DDC/CI, Mac OS X, sRGB, Windows 10 / 8.1 / 8 / 7
User convenience: SmartImage, Input, Volume, Menu, Power On/Off
OSD Languages: Brazil Portuguese, Czech, Dutch, English, Finnish, French, German, Greek, Hungarian, Italian, Japanese, Korean, Polish, Portuguese, Russian, Simplified Chinese, Spanish, Swedish, Traditional Chinese, Turkish, Ukrainian
Other convenience: Kensington lock, VESA mount (100 x 100 mm)
Control software: SmartControl

Stand

Height adjustment: 130 mm
Pivot: 90 degree
Swivel: -175/+175 degree
Tilt: -5/25 degree

Power

ECO mode: 10 W (typ.)
Power supply: 100–240 VAC, 50–60 Hz, Built-in
Off mode: < 0.3 W (typ.)
On mode: 13.52 W (typ.) (EnergyStar test method)
Standby mode: < 0.5 W (typ.)
Power LED indicator: Operation - White, Standby mode - White (flashing)
Energy Label Class: E

Dimensions

Product with stand (mm): 490 x 455 x 202 mm
Packaging in mm (W x H x D): 552 x 420 x 194 mm
Product without stand (mm): 490 x 296 x 45 mm

Weight

Product with packaging (kg): 6.65 kg
Product with stand (kg): 4.65 kg
Product without stand (kg): 2.77 kg

Operating conditions

Altitude: Operation: +12,000 ft (3658 m), Non-operation: +40,000 ft (12,192 m)
Temperature range (operation): 0°C to 40°C °C
Relative humidity: 20%-80 %
Temperature range (storage): -20°C to 60°C °C
MTBF (demonstrated): 70,000 hrs (excluded backlight)

Sustainability

Environmental and energy: EnergyStar 8.0, EPEAT*, TCO Certified, RoHS
Recyclable packaging material: 100 %
Specific Substances: PVC/BFR free housing, Mercury free
Recycled material: 25%

Compliance and standards

Regulatory Approvals: CE Mark, FCC Class B, SEMKO, cETLus, CU-EAC, EPA, WEEE, UKRAINIAN, ICES-003, TUV/ISO9241-307, PSB, CECP, TUV Cert. — blue light cut-off

Cabinet

Finish: Texture
Foot: Black
Front bezel: Black
Rear cover: Black

What's in the box?

Cables: D-Sub cable, HDMI cable, DP cable, Audio cable, Power cable
Monitor with stand
User Documentation

