



LCD monitor with Ultra Wide-Color

- E Line
- 27" (68.6 cm)
- 1920 x 1080 (Full HD)

276E9QHSW/89

Stunning color, stylish design

The Philips E line monitor features stylish design with extraordinary picture performance. A narrow border Full HD display with Ultra Wide-Color brings you to real true-to-life visuals. Enjoy superior viewing in a stylish design.

Benefits

Superb Picture Quality

- Ultra Wide-Color wider range of colors for a vivid picture
- IPS LED wide view technology for image and color accuracy
- 16:9 Full HD display for crisp detailed images
- Effortlessly smooth gameplay with AMD FreeSync™ technology

Features designed for you

- Narrow border display for a seamless appearance
- Less eye fatigue with Flicker-free technology

- LowBlue Mode for easy on-the-eyes productivity
- HDMI ensures universal digital connectivity

Greener everyday

- Eco-friendly materials meet major international standards
- Low power consumption saves energy bills

PHILIPS

Features

Ultra Wide-Color Technology



Ultra Wide-Color Technology delivers a wider spectrum of colors for a more brilliant picture. Ultra Wide-Color wider "color gamut" produces more natural-looking greens, vivid reds and deeper blues. Bring media entertainment, images, and even productivity more alive and vivid colors from Ultra Wide-Color Technology.

IPS technology



IPS displays use an advanced technology which gives you extra wide viewing angles of 178/178 degree, making it possible to view the display from almost any angle. Unlike standard TN panels, IPS displays gives you remarkably crisp images with vivid colors, making it ideal not only for Photos, movies and web browsing, but also for professional applications which demand color accuracy and consistent brightness at all times.

16:9 Full HD display



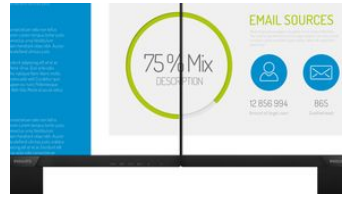
Picture quality matters. Regular displays deliver quality, but you expect more. This display features enhanced Full HD 1920 x 1080 resolution. With Full HD for crisp detail paired with high brightness, incredible contrast and realistic colors expect a true to life picture.

Ultra-smooth gaming



Gaming shouldn't be a choice between choppy gameplay or broken frames. With the new Philips monitor it doesn't have to be. Get fluid, artifact-free performance at virtually any framerate with AMD FreeSync™ technology, smooth quick refresh and ultra-fast response time.

UltraNarrow Border



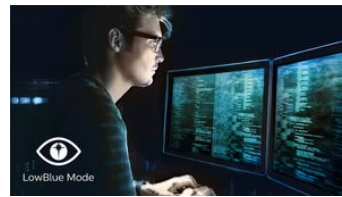
The new Philips displays feature ultra-narrow borders which allow for minimal distractions and maximum viewing size. Especially suited for multi-display or tiling setup like gaming, graphic design and professional applications, the ultra-narrow border display gives you the feeling of using one large display.

Flicker-free technology



Due to the way brightness is controlled on LED-backlit screens, some users experience flicker on their screen which causes eye fatigue. Philips Flicker-free Technology applies a new solution to regulate brightness and reduce flicker for more comfortable viewing.

LowBlue Mode



Studies have shown that just as ultra-violet rays can cause eye damage, shortwave length blue light rays from LED displays can cause eye damage and affect vision over time. Developed for wellbeing, Philips LowBlue Mode setting uses a smart software technology to reduce harmful shortwave blue light.

HDMI Ready



An HDMI-ready device has all the required hardware to accept High-Definition Multimedia Interface (HDMI) input. A HDMI cable enables high-quality digital video and audio all transmitted over a single cable from a PC or any number of AV sources (including set-top boxes, DVD players, A/V receivers and video cameras).

Eco-friendly materials

"Philips is committed to use sustainable, eco-friendly materials across its monitor range. All body plastic parts, metal chassis parts and packing materials use 100% recyclable materials. In some selected models we utilize upto 65% post consumer recycled plastics. Strict adherence to RoHS standards ensure substantial reduction or elimination of toxic substances like Lead, for example. Mercury content in monitors with CCFL backlight has been reduced significantly, while eliminated in monitors with LED backlight completely.

Specifications

[field not found 'disclaimer_text']

Picture/Display

LCD panel type	IPS technology
AMD FreeSync™ technology	Yes
Backlight type	W-LED system
Panel Size	27 inch / 68.6 cm
Effective viewing area	597.9 (H) x 336.3 (V)
Display Screen Coating	Anti-Glare, 3H, Haze 25%
Aspect ratio	16:9
Maximum resolution	1920 x 1080 @ 75 Hz*
Pixel Density	82 PPI
Response time (typical)	5 ms (Gray to Gray)*
Brightness	250 cd/m ²
Contrast ratio (typical)	1000:1
SmartContrast	20,000,000:1
Pixel pitch	0.311 x 0.311 mm
Viewing angle	178° (H) / 178° (V) @ C/R > 10
Flicker-free	Yes
Picture enhancement	SmartImage game
Color gamut (typical)	NTSC 93%*, sRGB 124%*
Display colors	16.7 M
Scanning Frequency	38 - 89 kHz (H) / 50 - 75 Hz (V)
LowBlue Mode	Yes
sRGB	Yes

Connectivity

Signal Input	VGA (Analog) HDMI (digital, HDCP)
Sync Input	Separate Sync Sync on Green
Audio (In/Out)	HDMI audio out

Convenience

User convenience	Power On/Off Menu Brightness Input SmartImage Game
OSD Languages	Brazil Portuguese Czech Dutch English Finnish French German Greek Hungarian Italian Japanese Korean Polish Portuguese Russian Simplified Chinese Spanish Swedish Traditional Chinese Turkish Ukrainian
Other convenience	Kensington lock

Plug & Play Compatibility

VESA mount (100x100mm)
DDC/CI
Mac OS X
sRGB
Windows 10 / 8.1 / 8 / 7

Stand

Tilt -5/20 degree

Power

On mode 15.5 W (typ.) (EnergyStar test method)
Standby mode 0.5 W (typ.)
Off mode 0.5 W (typ.)
Power LED indicator Operation - White
Standby mode- White (blinking)
Power supply External
100-240VAC, 50-60Hz

Dimensions

Product with stand (mm) 614 x 465 x 220 mm
Product without stand (mm) 614 x 367 x 40 mm
Packaging in mm (WxHxD) 660 x 514 x 155 mm

Weight

Product with stand (kg) 3.90 kg
Product without stand (kg) 3.24 kg
Product with packaging (kg) 5.84 kg

Operating conditions

Temperature range (operation) 0 to 40 °C
Temperature range (storage) -20 to 60 °C
Relative humidity 20%-80 %
Altitude Operation: +12,000ft (3,658m), Non-operation: +40,000ft (12,192m)
MTBF 50,000 (excluding backlight) hour(s)

Sustainability

Environmental and energy EnergyStar 8.0
RoHS
Mercury Free
Recyclable packaging material 100 %

Compliance and standards

Regulatory Approvals CCC
WEEE
CECP
CE Mark

Cabinet

Color White / Silver
Finish Glossy

- * "IPS" word mark / trademark and related patents on technologies belong to their respective owners.
- * The maximum resolution works for HDMI input only.
- * Response time value equal to SmartResponse
- * 2020 Advanced Micro Devices, Inc. All rights reserved. AMD, the AMD Arrow logo, AMD FreeSync™ and combinations thereof are trademarks of Advanced Micro Devices, Inc. Other product names used in this publication are for identification purposes only and may be trademarks of their respective companies.
- * NTSC Area based on CIE1976
- * sRGB Area based on CIE1931
- * The monitor may look different from feature images.



data subject to change
2021, September 19

Version: 2.0.1
EAN: 8712581762889

© 2021 Koninklijke Philips N.V.
All rights reserved.

Specifications are subject to change without notice. Trademarks are the property of Koninklijke Philips N.V. or their respective owners.

www.philips.com