



Philips  
LCD monitor, LED  
backlight with  
PowerSensor

- S-line
- 27" / 68.6cm
- Full HD display

271S4LPYSS

# Sustainable productivity

with PowerSensor saves energy bills

The Philips PowerSensor LED display using 25% recycled materials and PVC, BFR free housing is ideal for eco-friendly productivity

## **Sustainable Eco-design**

- PowerSensor saves up to 80% energy costs
- 25% recycled material with EPEAT Gold
- PVC-BFR free housing

## **Great performance**

- LED technology ensures natural colors
- DisplayPort delivers high bandwidth for ultra fine images
- SmartContrast gives enhanced rich black details
- TrueVision ensures lab quality images

## **Easy to experience**

- Modern Touch controls
- SmartImage presets for easy optimized image settings
- SmartControl for easy performance tuning
- Screen tilts to your ideal, individualized viewing angle

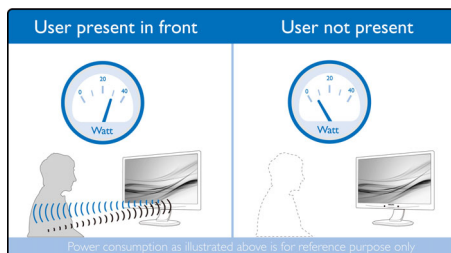
# PHILIPS

# Highlights

## LED technology

White LED's are solid state devices which light up to full, consistent brightness faster saving startup time. LED's are free from mercury content which allows for eco-friendly recycling and disposal process. LED's allow for better dimming control of LCD backlight, resulting in super high contrast ratio. It also gives superior color reproduction thanks to consistent brightness across the screen.

## PowerSensor

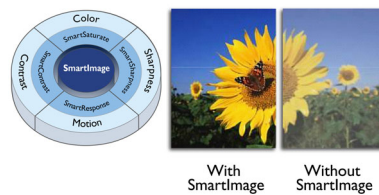


PowerSensor is a built-in 'people sensor' that transmits and receives harmless infrared signals to determine if user is present and automatically reduces monitor brightness when user steps away from the desk, cutting energy costs by up to 80 percent and prolonging monitor life

## DisplayPort

DisplayPort is a digital link from PC to Monitor without any conversion. With higher capabilities than DVI standard, it is fully capable to support up to 15meter cables and 10.8 Gbps/sec data transfer. With this high performance and zero latency, you get the fastest imaging and refresh rates - making DisplayPort the best choice for not only general office or home use, but also for the demanding gaming and movies, video editing and more. It also keeps interoperability in mind via use of various adapters.

## SmartImage



SmartImage is an exclusive leading edge Philips technology that analyzes the content displayed on your screen and gives you optimized display performance. This user friendly interface allows you to select various modes like Office, Photo, Movie, Game, Economy etc., to fit the application in use. Based on the selection, SmartImage dynamically optimizes the contrast, color saturation and sharpness of images and videos for ultimate display performance. The Economy mode option offers you major power savings. All in real time with the press of a single button!

## SmartControl for easy tuning

PC software for fine tuning display performance and settings. Philips offers users two choices for display setting adjustment. Either navigate the multilevel On Screen Display menu through buttons on the display itself or use the Philips SmartControl software to easily adjust the various display settings in a familiar way

## SmartContrast



SmartContrast is a Philips technology that analyzes the contents you are displaying, automatically adjusting colors and controlling backlight intensity to dynamically enhance contrast for the best digital images and videos or when playing games where dark hues are displayed. When Economy mode is selected, contrast is adjusted and backlighting fine-tuned

for just-right display of everyday office applications and lower power consumption.

## Touch controls

Touch controls are intelligent, touch sensitive icons that replace protruding buttons that lets the user adjust the monitor to their requirement. Responding to your lightest touch, Touch control gives the monitor a modern feel

## TrueVision



TrueVision is a proprietary Philips technology that uses advanced algorithm for testing and aligning monitor display which gives you the ultimate display performance that is 4 times more stringent than Windows sRGB requirements. Only Philips ensures each and every monitor that leaves the factory is fine tuned with this process so you can get consistent color and picture quality.

## EPEAT Gold

Philips EPEAT GOLD certified monitors ensure protection for human health and environment, and are highly energy efficient ensuring low emissions of climate changing green house gases. EPEAT program helps purchasers evaluate, compare and select Monitors based on 51 environmental criteria supported by US EPA. GOLD certification ensures that at least 30% of plastic used is Post Consumer Resin, which ensures reduction in use of toxic and hazardous materials. EPEAT Gold is valid only where Philips registers the product. Please visit [www.epeat.net](http://www.epeat.net) for registration status in your country.

## PVC-BFR free housing

This Philips monitor housing is free from brominated flame retardant and polyvinyl chloride (PVC-BFR free)



# Specifications

## Picture/Display

- LCD panel type: TFT-LCD
- Backlight type: W-LED system
- Panel Size: 27 inch / 68.6 cm
- Effective viewing area: 597.6 (H) x 336.15 (V)
- Aspect ratio: 16:9
- Optimum resolution: 1920 x 1080 @ 60Hz
- Response time (typical): 5 ms
- Brightness: 300 cd/m<sup>2</sup>
- Contrast ratio (typical): 1000:1
- SmartContrast: 20,000,000:1
- Pixel pitch: 0.311 x 0.311 mm
- Viewing angle: 170° (H) / 160° (V), @ C/R > 10
- Picture enhancement: SmartImage
- Display colors: 16.7M
- Scanning Frequency: 30 - 83 kHz (H) / 56 - 75 Hz (V)
- sRGB

## Connectivity

- Signal Input: DisplayPort, DVI-D (digital, HDCP), VGA (Analog)
- Sync Input: Separate Sync, Sync on Green

## Convenience

- User convenience: SmartImage, PowerSensor, Brightness, Menu, Power On/Off
- Control software: SmartControl Premium
- OSD Languages: English, French, German, Italian, Portuguese, Russian, Simplified Chinese, Spanish
- Other convenience: Kensington lock, VESA mount (100x100mm)
- Plug & Play Compatibility: DDC/CI, Mac OS X, sRGB, Windows 7/Vista/XP

## Stand

- Tilt: -5/20 degree

## Power

- ECO mode: 18 W (typ.)
- On mode: 20.3 W (typ.) (EnergyStar 5.0 test method)

- Standby mode: 0.3 W
- Off mode: 0.1 W (typ.)
- Power LED indicator: Operation - White, Standby mode- White (blinking)
- Power supply: 100-240VAC, 50-60Hz, Built-in

## Dimensions

- Product with stand (mm): 639 x 484 x 224 mm
- Product without stand (mm): 639 x 405 x 64 mm
- Packaging in mm (WxHxD): 730 x 565 x 176 mm

## Weight

- Product with stand (kg): 5.90 kg
- Product without stand (kg): 5.00 kg
- Product with packaging (kg): 8.92 kg

## Operating conditions

- Temperature range (operation): 0°C to 40°C °C
- Temperature range (storage): -20°C to 60°C °C
- Relative humidity: 20%-80 %
- Altitude: Operation: +12,000ft (3,658m), Non-operation: +40,000ft (12,192m)
- MTBF: 30,000 hour(s)

## Sustainability

- Environmental and energy: PowerSensor, EnergyStar 5.0, EPEAT Gold\*, RoHS
- Recyclable packaging material: 100 %
- Recycled material: 25%
- Specific Substances: PVC / BFR free housing, Mercury free, Lead free

## Compliance and standards

- Regulatory Approvals: BSMI, CE Mark, FCC Class B, GOST, SASO, SEMKO, TCO 5.2, TUV Ergo, TUV/GS, UL/cUL, WEEE

## Cabinet

- Front bezel: Silver
- Rear cover: Black
- Foot: Black
- Finish: Texture



Issue date 2013-06-06

Version: 4.0.1

12 NC: 8670 000 93289  
EAN: 87 12581 65465 8

© 2013 Koninklijke Philips N.V.  
All Rights reserved.

Specifications are subject to change without notice.  
Trademarks are the property of Koninklijke Philips N.V.  
or their respective owners.

[www.philips.com](http://www.philips.com)

\* EPEAT Gold is valid only where Philips registers the product. Please visit [www.epeat.net](http://www.epeat.net) for registration status in your country.