



Philips Signage Solutions
LED Display

27"

Direct View LED



27BDL9119L

Limitless

Bezel-free LED display wall.

Fill their imagination. Create seamless displays. With an L-Line Professional LED Display Wall, the possibilities are endless. The bezel-free design, wide viewing angle and breathtaking brightness ensure authoritative imaging. At any size.

Spectacular picture. Endless possibilities.

- Ultra-high brightness even at wide viewing angles
- Zero bezel. Create seamless display screens
- LED display. Superb image quality. Perfect uniformity

Effortless setup. Reliable performance.

- Join multiple cabinets to achieve higher resolution
- Built-in rear cable cover. Easy cable management
- Front-access LED modules. Easy maintenance and servicing
- High-performance gold-wire LEDs

Immersive viewing. Versatile LED solution.

- Perfect clarity. From broadcast studio to control room
- Ultra-high refresh rate. Smooth, judder-free images
- Ultra-thin pixel pitch of 1.9 mm. Beautiful at any size
- Create bezel-free video walls of any shape or size

PHILIPS

Highlights

LED display. Superb image

Create bezel-free video walls of any shape, size or resolution. The modular design of Philips Professional LED cabinets means you can adapt to any space. Build vast, immersive installations or assemble intriguing patterns. Easily create video walls that flow seamlessly around doorways and other openings.

Built-in rear cable cover.

Your Philips Professional LED Display features built-in rear cable covers to keep power and data cables tidy. Display cabinets can also be daisy-chained for both power and data, allowing you to minimise clutter and speed up installation.

High-performance gold-wire LED

Philips Professional LED Displays use high-performance gold-wire LEDs, which are energy efficient and cost effective. The light is brighter and the LEDs last longer.

Create bezel-free video walls

Simply connect multiple LED display cabinets to create the resolution you want, whether it's 4K, 8K or even higher. Compared to LCD screens, LED displays boast higher refresh rates that enable smoother images. Whatever the application, you'll thrill them with crystal-clear picture quality.

Front-access LED modules.

Internal electronics are easy to access for servicing or maintenance. Each of the eight LED modules in a cabinet can be removed using a dedicated magnetic JIG tool, which lifts the module out from the front.

Join multiple cabinets

Join multiple cabinets to achieve higher resolution

Ultra-high brightness

Ultra-high brightness even at wide viewing angles

Ultra-thin pixel pitch of 1.9

Ultra-thin pixel pitch of 1.9 mm. Beautiful at any size

Ultra-high refresh rate

Ultra-high refresh rate. Smooth, judder-free images

Perfect clarity

Perfect clarity. From broadcast studio to control room

Zero bezel

Zero bezel. Create seamless display screens

Specifications

Picture/Display

- Aspect ratio: 16:9
- Brightness Uniformity: $\geq 97\%$
- Brightness after calibration: 800 nits
- Brightness before calibration: 900 nits
- Calibration (brightness/colour): Supported
- Colour temperature adjust range: 4000~9500 K (by software)
- Colour temperature default: 6500 \pm 500 K
- Contrast ratio (typical): $\geq 3000:1$
- Viewing angle (horizontal): 160 degree
- Viewing angle (vertical): 160 degree
- Picture enhancement: Dynamic contrast enhancement, Wide colour gamut display
- Placement: Landscape
- Frame frequency (Hz): 50 & 60
- Refresh rate (Hz): 1920~3840
- Usage: 24/7 hrs, Indoor

Convenience

- Ease of installation: Guide pins, Light weight, Locking mechanism for cabinet
- Power loop through: For 230 V environments: 8 cabinets or less, for 110 V environments: 4 cabinets or less
- Signal control loop through: RJ45

Power

- Consumption (Typical): ≤ 36 W
- Max Power consumption (W): ≤ 110 W
- BTU Value m²: 1804 BTU/m²
- Input voltage: AC100~240 V (50 and 60 Hz)

Operating conditions

- Temperature range (operation): -20~45 °C
- Temperature range (storage): -20~50 °C
- Humidity range (operation)[RH]: 10~80%
- Humidity range (storage) [RH]: 10~85%

Cabinet

- Cabinet area (m²): 0.2079
- Cabinet pixels (Dot): 57,600
- Cabinet resolution (W x H): 320 x 180
- Cabinet size (mm): 608 x 342 x 55
- Data connector: RJ45
- Power connector: In/Out(C14/C13)
- Receiving card quantity: 1 pcs
- Receiving card spec.: A5S/A5S Plus
- Receiving card brand: Novastar
- Weight (kg): 8(+/-0.4 Kg)
- Cabinet diagonal (inch): 27.5 inch
- Cabinet construction: Die-Casting Aluminium

Module

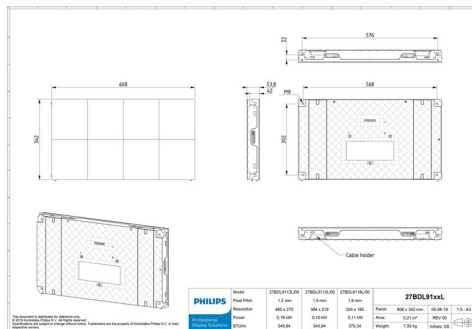
- LED type: SMD 1515 Gold wire
- Pixel constitution: 1R1G1B
- LED lifetime(Hrs): 100 000
- Module resolution (WxH pixels): 80 x 90
- Module size (WxHxD in mm): 152 x 71 x 10
- Pixel pitch (mm): 1.9

Accessories

- Common connecting piece: 4 pcs
- LAN cable (RJ45, CAT-5): 1 pcs
- QSG: 1 pcs
- Screw bolt: 4 pcs (M8*20) (Inner Hexagon Screw)
- Power loop through cable: 1 pcs

Miscellaneous

- Warranty: 3 years
- Regulatory approvals: FCC SDOC, Part 15, EMC Class B, EN55032, EN55035, EN61000-3-2, EN61000-3-3, IEC/UL60950, IEC/UL62368, IEC62471, RoHS



Issue date 2024-03-24

Version: 10.0.1

EAN: 87 12581 75862 2

© 2024 Koninklijke Philips N.V.
All Rights reserved.

Specifications are subject to change without notice.
Trademarks are the property of Koninklijke Philips N.V.
or their respective owners.

www.philips.com