



Philips  
LCD monitor, LED  
backlight with SmartImage

**S Line**  
24" (61 cm)  
Full HD display

**241S4LYCB**



## Sustainable productivity

with energy efficient ergonomic LED display

The Philips ergonomic LED display using 25% recycled materials and PVC, BFR free housing is ideal for eco-friendly productivity

### **Sustainable Eco-design**

- PVC-BFR free housing
- 100% recyclable packaging
- Zero mercury content

### **Great performance**

- LED technology ensures natural colors
- DisplayPort delivers high bandwidth for ultra fine images
- TrueVision ensures lab quality images

### **Designed for people**

- SmartErgoBase enables people-friendly ergonomic adjustments
- Low bezel-to-table height for maximum reading comfort

### **Easy to experience**

- SmartImage presets for easy optimized image settings
- SmartControl for easy performance tuning

# PHILIPS

LCD monitor, LED backlight  
S Line 24" (61 cm), Full HD display

241S4LYCB/00

# Highlights

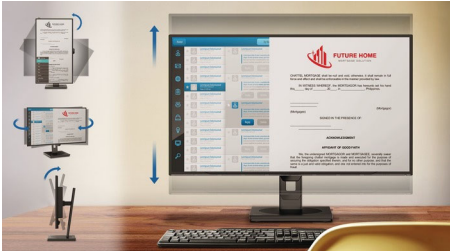
## LED technology

White LED's are solid state devices which light up to full, consistent brightness faster saving startup time. LED's are free from mercury content which allows for eco-friendly recycling and disposal process. LED's allow for better dimming control of LCD backlight, resulting in super high contrast ratio. It also gives superior color reproduction thanks to consistent brightness across the screen.

## DisplayPort

DisplayPort is a digital link from PC to Monitor without any conversion. With higher capabilities than DVI standard, it is fully capable to support up to 15meter cables and 10.8 Gbps/sec data transfer. With this high performance and zero latency, you get the fastest imaging and refresh rates - making DisplayPort the best choice for not only general office or home use, but also for the demanding gaming and movies, video editing and more. It also keeps interoperability in mind via use of various adapters.

## SmartErgoBase



The SmartErgoBase is a monitor base that delivers ergonomic display comfort and provides cable management. The base's people-friendly height, swivel, tilt and rotation angle adjustments position the monitor for maximum comfort that can ease the physical strains of a long workday; cable management

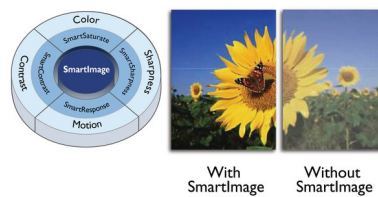
reduces cable clutter and keeps the workspace neat and professional.

## Low bezel-to-table height



The Philips monitor, thanks to its advanced SmartErgoBase, can be lowered down almost to desk level for a comfortable viewing angle. Low bezel-to-table height is the perfect solution if you use bifocals, trifocals or progressive lens glasses for your computing work. Additionally, it allows for users with greatly different heights to use the monitor in their preferred angle and height settings, helping them reduce fatigue and strain.

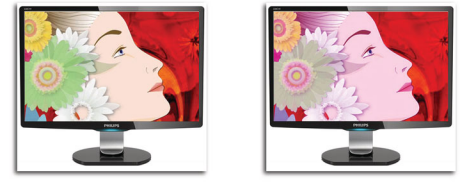
## SmartImage



SmartImage is an exclusive leading edge Philips technology that analyzes the content displayed on your screen and gives you optimized display performance. This user friendly interface allows you to select various modes like Office, Photo, Movie, Game, Economy etc., to fit the application in use. Based on the selection, SmartImage dynamically optimizes the contrast, color saturation and sharpness of images and videos for ultimate display performance. The Economy mode option

offers you major power savings. All in real time with the press of a single button!

## TrueVision



TrueVision is a proprietary Philips technology that uses advanced algorithm for testing and aligning monitor display which gives you the ultimate display performance. Philips ensures TrueVision monitors leave the factory fine-tuned with this process giving you consistent color and picture quality.

## Zero mercury content

Philips monitors with LED backlighting are free of Mercury content, one of the most toxic natural substances, which affects humans and animals. This reduces the environmental impact of the display throughout its life-cycle, from manufacturing to disposal.

## PVC-BFR free housing

This Philips monitor housing is free from brominated flame retardant and polyvinyl chloride (PVC-BFR free)

## SmartControl for easy tuning

PC software for fine tuning display performance and settings. Philips offers users two choices for display setting adjustment. Either navigate the multilevel On Screen Display menu through buttons on the display itself or use the Philips SmartControl software to easily adjust the various display settings in a familiar way



# Specifications

## Picture/Display

- LCD panel type: TFT-LCD
- Backlight type: W-LED system
- Panel Size: 24 inch / 61 cm
- Effective viewing area: 531.4 (H) x 298.9 (V)
- Aspect ratio: 16:9
- Optimum resolution: 1920 x 1080 @ 60Hz
- Response time (typical): 5 ms
- Brightness: 250 cd/m<sup>2</sup>
- Contrast ratio (typical): 1000:1
- SmartContrast: 20,000,000:1
- Pixel pitch: 0.276 x 0.276 mm
- Viewing angle: 170° (H) / 160° (V), @ C/R > 10
- Picture enhancement: SmartImage
- Display colors: 16.7 M
- Scanning Frequency: 30 - 83 kHz (H) / 56 - 75 Hz (V)
- sRGB

## Connectivity

- Signal Input: DisplayPort x 1, DVI-D (digital, HDCP), VGA (Analog)
- Sync Input: Separate Sync, Sync on Green

## Convenience

- User convenience: SmartImage, Brightness, SmartPower, Menu, Power On/Off
- Control software: SmartControl Premium
- OSD Languages: English, French, German, Italian, Portuguese, Russian, Simplified Chinese, Spanish
- Other convenience: Kensington lock, VESA mount (100x100mm)
- Plug & Play Compatibility: DDC/CI, Mac OS X, sRGB, Windows 7/Vista/XP

## Stand

- Height adjustment: 100 mm
- Pivot: 90 degree
- Swivel: -65/65 degree
- Tilt: -5/20 degree

## Power

- ECO mode: 12W (typ.)

- On mode: 20.17W (typ.) (EnergyStar 5.0 test method)
- Standby mode: 0.1W
- Off mode: 0.1W
- Power LED indicator: Operation - White, Standby mode- White (blinking)
- Power supply: 100-240VAC, 50/60Hz, Built-in

## Dimensions

- Product with stand (mm): 565 x 403 x 227 mm
- Product without stand (mm): 565 x 352 x 55 mm
- Packaging in mm (WxHxD): 624 x 405 x 172 mm

## Weight

- Product with stand (kg): 6.3 kg
- Product without stand (kg): 4.3 kg
- Product with packaging (kg): 8.3 kg

## Operating conditions

- Temperature range (operation): 0°C to 40°C °C
- Temperature range (storage): -20°C to 60°C °C
- Relative humidity: 20%-80 %
- MTBF: 30,000 hour(s)

## Sustainability

- Environmental and energy: EnergyStar 5.0, EPEAT\*, RoHS
- Recyclable packaging material: 100 %
- Recycled material: 25%
- Specific Substances: PVC / BFR free housing, Mercury free

## Compliance and standards

- Regulatory Approvals: BSMI, CE Mark, FCC Class B, GOST, SASO, SEMKO, TUV Ergo, TUV/GS, UL/cUL, WEEE, TCO Certified

## Cabinet

- Front bezel: Black
- Rear cover: Black
- Foot: Black
- Finish: Texture



Issue date 2022-05-10

Version: 5.2.4

12 NC: 8670 000 81232  
EAN: 87 12581 61831 5

© 2022 Koninklijke Philips N.V.  
All Rights reserved.

Specifications are subject to change without notice.  
Trademarks are the property of Koninklijke Philips N.V.  
or their respective owners.

[www.philips.com](http://www.philips.com)

\* EPEAT rating is valid only where Philips registers the product. Please visit <https://www.epeat.net/> for registration status in your country.