



Philips Brilliance  
LCD monitor with  
PowerSensor

56 cm (22") w P-line  
Format 16:10

**Brilliance**

**225P1ES**



## World's first PowerSensor display cuts power bills

The Green Philips 225P1 monitor with revolutionary PowerSensor technology detects user presence and adjusts power consumption accordingly, reducing your power consumption by up to 70%.

### **Sustainable Eco-friendly solution**

- PowerSensor: Ensures lower operating costs by saving energy
- High energy efficiency helps reduce energy bills
- Eco-friendly materials that meet international standards
- EPEAT Silver ensures lower impact on environment

### **Outstanding display performance**

- SmartImage: Optimised user-friendly display experience
- TrueVision: Laboratory quality display performance

### **Ergonomic design**

- 130 mm height adjustment for ideal sitting position
- 90-degree screen rotation and smart cable management
- Tilt and swivel adjustment for the ideal viewing angle

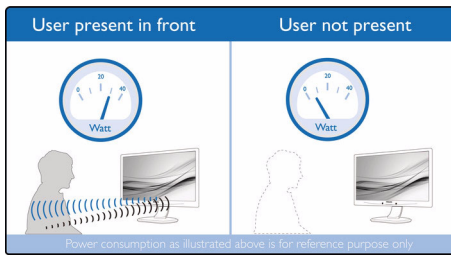
### **Great convenience**

- Built in stereo audio for multimedia experience
- USB port to enhance multimedia experience

**PHILIPS**

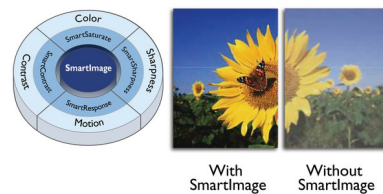
# Highlights

## PowerSensor



PowerSensor is a built-in 'people sensor' that transmits and receives harmless infrared signals to determine if the user is present and automatically reduces monitor brightness when the user steps away from the desk, cutting energy costs by up to 70 percent and prolonging monitor life.

## SmartImage



SmartImage is an exclusive leading edge Philips technology that analyses the content displayed on your screen and gives you optimised display performance. This user-friendly interface allows you to select various modes like Office, Image, Entertainment, Economy etc., to fit the application in use. Based on the selection, SmartImage dynamically optimises the contrast, colour saturation and sharpness of images and videos for ultimate display performance. The Economy mode option offers you major power savings. All in real time with the press of a single button!

## Built-in stereo audio

A pair of high-quality stereo speakers built into a display device. They may be visible front firing, or invisible down firing, top firing, rear firing etc. depending on model and design.

## USB port for multimedia



The universal serial bus or USB is a standard protocol for linking PCs and peripherals. Since it delivers high speed at a low cost, USB has become the most popular method for connecting peripheral devices to a computer. A port located on a monitor directly in the user's line of sight provides easy, high-speed connectivity for USB devices at a convenient location. (USB 2.0 support is dependent on your PC's USB configuration; when connected to a PC that supports USB 2.0, your monitor is USB 2.0 compatible)

## 130 mm height adjustment

The Super Ergo Base is a 'people friendly' Philips monitor base that not only tilts and swivels, but is also height adjustable and pivots 90 degrees, so that each user can adjust the monitor to their personal preference for maximum viewing comfort and efficiency.

## ScreenRotate

ScreenRotate makes it possible to use a monitor in either the landscape or portrait mode; to change orientation for a better view of a selected document or image, the monitor is rotated to the desired orientation.

## High energy efficiency

Philips has taken a lead in ensuring that all its products switch to energy efficient solutions. By using efficient power supplies and reduction in components, Philips has ensured that your monitor typically consumes about 50% less power than its equivalent previous generation model. Energy saving is further enhanced by using only 0.5 Watts in sleep mode. Lower power consumption results in fewer CO<sub>2</sub> emissions. You can read more about Philips and energy efficiency at [www.philips.com/about/sustainability/oursustainabilityfocus/energyefficiency/index.page](http://www.philips.com/about/sustainability/oursustainabilityfocus/energyefficiency/index.page)

## Eco-friendly materials

"Philips is committed to using sustainable, eco-friendly materials across its monitor range. All body plastic parts, metal chassis parts and packing materials use 100% recyclable materials. In some selected models we utilise up to 65% post-consumer recycled plastics. Strict adherence to RoHS standards ensures substantial reduction or elimination of toxic substances like lead, for example. Mercury content in monitors with CCFL backlights has been reduced significantly and eliminated completely in monitors with LED backlights. Visit Philips at <http://www.asimpleswitch.com/global/> to learn more.

## EPEAT Silver

Philips EPEAT Silver certified monitors ensure protection for human health and the environment, and are highly energy efficient ensuring low emissions of climate changing green house gases. The EPEAT programme helps purchasers evaluate, compare and select Monitors based on 51 environmental criteria supported by the US EPA. EPEAT Silver is valid only where Philips registers the product. Please visit [www.epeat.net](http://www.epeat.net) for registration status in your country.



# Specifications

## Picture/Display

- LCD panel type: TFT-LCD
- Panel Size: 22 inch/55.9 cm
- Aspect ratio: 16:10
- Pixel pitch: 0.282 x 0.282 mm
- Brightness: 250 cd/m<sup>2</sup>
- SmartContrast: 25000:1
- Response time (typical): 5 ms
- Optimum resolution: 1680 x 1050 @ 60 Hz
- Viewing angle: 176° (H)/170° (V), @ C/R > 5
- Picture enhancement: SmartImage
- Display colours: 16.7 M
- Scanning Frequency: 30–83 kHz (H)/56–75 Hz (V)
- sRGB

## Connectivity

- Signal Input: VGA (Analogue), DVI-D (digital, HDCP)
- USB: USB 2.0 x 1
- Sync Input: Separate Sync, Sync on Green
- Audio (In/Out): Stereo Audio

## Convenience

- Built-in Audio: 1.5 W x 2
- User convenience: Sensor, SmartImage, Brightness, Menu, Audio, Power On/Off
- OSD Languages: English, French, German, Spanish, Italian, Russian, Simplified Chinese, Portuguese
- Other convenience: VESA mount (100 x 100 mm), Kensington lock
- Plug and Play Compatibility: DDC/CI, Mac OS X, Windows 7/Vista/XP/2000/98, sRGB

## Stand

- Height adjustment: 130 mm
- Pivot: 90
- Swivel: -65/+65 degree
- Tilt: -5/20 degree

## Power

- ECO mode: <17.5 W
- On mode: 22.37 W (EnergyStar 5.0 test method)
- Standby mode: <0.5 W
- Off mode: < 0.5 W
- Power LED indicator: Operation - White, Standby mode - White (flashing)
- Power supply: Built-in, 100-240 VAC, 50/60 Hz

## Dimensions

- Product with stand (mm): 589 x 502 x 220 mm
- Product without stand (mm): 346 x 502 x 58 mm
- Packaging in mm (W x H x D): 410 x 658 x 272 mm

## Weight

- Product with stand (kg): 6.47 kg
- Product without stand (kg): 4.15 kg
- Product with packaging (kg): 7.58 kg

## Operating conditions

- Temperature range (operation): 0°C to 40°C °C
- Temperature range (storage): -20°C to 60°C °C
- Relative humidity: 20%–80% %
- MTBF: 50,000 hour(s)

## Sustainability

- Environmental and energy: EPEAT Silver, RoHS, EnergyStar 5.0
- Recyclable packaging material: 100 %

## Compliance and standards

- Regulatory Approvals: BSMI, CE Mark, FCC, Class B, GOST, SEMKO, TCO '03, TUV/GS, TUV Ergo, UL/cUL

## Cabinet

- Colour: Silver/Black
- Finish: Texture



Issue date 2019-12-17

Version: 7.0.2

12 NC: 8670 000 56272  
EAN: 87 12581 50463 2

© 2019 Koninklijke Philips N.V.  
All Rights reserved.

Specifications are subject to change without notice.  
Trademarks are the property of Koninklijke Philips N.V.  
or their respective owners.

[www.philips.com](http://www.philips.com)