



Philips Bodygroom Series
1000
Showerproof groin and
body trimmer

1 click-on comb, 3mm
Includes 1 AA battery



BG1025/15

Effortless body trim, safe even below the belt

Bidirectional trimmer with skin protect guard

The Series 1000 is designed specifically for body grooming and is ideal for use on smaller, sensitive areas or on the go. It safely trims intimate hair and comes with a unique skin protection system.

Safely and effectively trims even intimate hair

- Skin protection system guards while grooming your body
- Bidirectional trimmer and comb to trims in every direction

Easy and convenient use

- 100% Showerproof body groomer
- Body groomer built to last with no oil required
- Ergonomic grip for added grooming control
- Up to 2 months of trimming power

PHILIPS

Showerproof groin and body trimmer
1 click-on comb, 3mm Includes 1 AA battery

Highlights

Skin protection system



The unique skin protection system guards even your most sensitive areas while body grooming. Allowing you to comfortably trim hair as close as 0.5mm without direct contact between the sharp edge of the blades and your skin.

Bidirectional trimmer & comb



Cut hair that grows in any direction using the bidirectional trimmer and 3mm comb. Pre-trimming is recommended for thicker hair.

Wet & dry



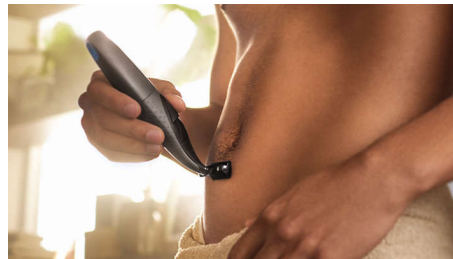
Your wet and dry body groomer is fully water proof, so you can use it in or out of the shower and clean your groomer easily. For best results, use on dry hair before showering.

AA battery power



Compact and efficient, you will get up to 2 months of trimming power from a single Philips AA Alkaline battery. Run-time may differ depending on hair type and grooming frequency.

Ergonomic grip



Your body groomer is easy to hold and manoeuvre, with a rubber ergonomic grip for more controlled trimming.

Built to last



All of our body grooming products are built to last. They come with a 2 year warranty and they never need to be oiled.

BG1025/15

Specifications

Accessories

- Comb: 1 body comb (3 mm)
- Included batteries: 3 AA batteries included
- Shower cord

Power

- Run time: Up to 2 months
- Power supply: AA battery

Design

- Handle: Ergonomic grip & handling

Service

- 2-year guarantee

Cutting system

- Cutting element: Bi-directional trimmer
- Skin comfort: Skin protection system, Comfort in sensitive areas
- Length settings: 1 fixed length setting

Ease of use

- Wet & Dry: Showerproof and easy cleaning
- Maintenance free: No need to replace the blades, No oil needed
- Operation: Cordless use



Issue date 2023-07-18

Version: 5.5.1

© 2023 Koninklijke Philips N.V.
All Rights reserved.

Specifications are subject to change without notice.
Trademarks are the property of Koninklijke Philips N.V.
or their respective owners.

www.philips.com