

# PHILIPS

## 7000 Series Hair Dryer

ThermoShield Advanced

30% Faster drying\*

25% more consistent heat

Water ion, mineral ion, 8x ion



BHD720/13



## 30% Faster\*. Lighter\*\*. Ultimate hair protection. with ThermoShield Advanced Technology

Philips 7000 Series Hair Dryer delivers professional results fast. Millions of ions intensify your hair's shine, while ThermoShield Advanced Technology senses temperature to protect hair from overheating.

### Easy to use

- Volume diffuser with magnetic nozzle
- Magnetic styling nozzle attaches effortlessly

### Ease of use

- Now 20% lighter\*\* for comfortable styling
- Adjustable heat and fan speed for any hair and style

### Care for your hair

- Water ions brings moisture to your hair
- Intelligent Hot & Cold Mode for year-round comfort
- Ionic care system with 8x\*\*\*\*\* more ions
- Mineral ions protect against UV rays\*\*\*\*\*

### Fast drying experience

- Powerful airflow for 30% faster drying\*

### Sustainability

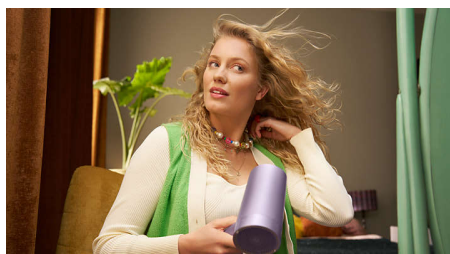
# Highlights

## ThermoShield Advanced



Dual-sensor system continuously reads the temperature in your room and actively adjusts the drying temperature 24,000 times\*\*\* per session to protect your hair from overheating. Enjoy 25% more consistent\*\*\*\* drying temperature in any environment.

## Powerful airflow



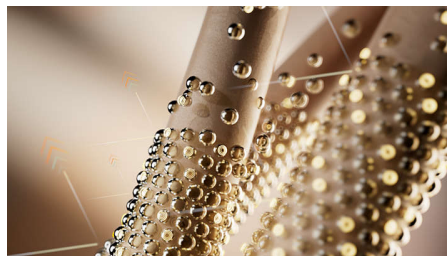
Innovative fan blades and a specially designed heater work their magic for dry hair in just 4 minutes\*\*\*\*\*.

## Water ion



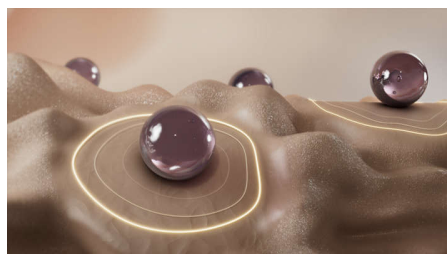
Add moisture for soft, healthy-looking hair. Water ion technology generates over 1000 times more water content than without an ionizer.

## Mineral ions



Keep your hair smooth and versatile. Mineral ion technology protects your hair against surface damage that can be caused by UV rays\*\*\*\*\*.

## Ionic care system



Ions intensify your hair's shine for frizz-free, glossy styling. Our powerful ionic system generates up to 80 million ions each drying session.

## Now 20% lighter\*\*



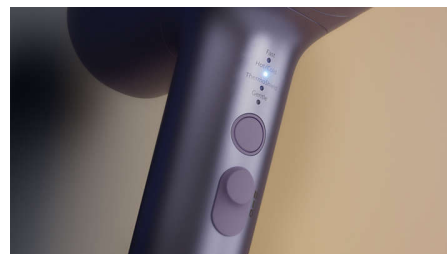
The ergonomic design of the hair dryer is now 20% lighter\*\* so you can be stylish and comfortable at the same time.

## Intelligent Hot & Cold Mode



Keep comfortable throughout the year. Intelligent Hot & Cold Mode automatically sets the best drying temperature for the season\*\*\*\*\*. Blow drying with hot-cold mode can also preserve your hair's natural shine.

## 8 heat and speed settings



Take control of your style with 4 heat settings and 2 fan speeds on the intuitive LED panel. Use the Cool Shot button for an intense burst to set your style a must-have professional function for expert hair styling.

## 22% less energy used\*\*\*\*\*



The hair dryer uses 22% less energy while delivering professional drying and styling results\*\*\*\*\*.

# Specifications

**Attachments**

Nozzle: 11 m  
Magnetic diffuser

**Technical specifications**

Wattage: 1800 W  
Voltage: 220-240V  
Motor: DC  
Cable length: 1.8 m

**Features**

Storage hook  
Heat/Speed settings: 8

**Service**

2-year worldwide warranty

**Caring technologies**

Ion technology: 8x ions, Water ion, Mineral ion



\* vs Philips basic dryer BHD002  
\* \* vs Philips MoistureProtect HP8280  
\* \* \* based on average drying time of 4 minutes  
\* \* \* \* vs Philips BHD510  
\* \* \* \* \* based on medium (40cm) length Caucasian hair in lab environment, at highest speed and heat settings. Actual result might vary.  
\* \* \* \* \* Mineral ionic after 6 months UV exposure  
\* \* \* \* \* vs HP8232/20 in top setting  
\* \* \* \* \* vs Philips MoistureProtect HP8281, comparing the drying time in the highest heat and speed setting  
\* \* \* \* \* \* Philips MoistureProtect HP8280 in highest setting