



Philips
Flat TV

51 cm (20")
LCD
Progressive Scan

20TA1600



Turn up your viewing experience with Crystal Clear

Tuned for picture-perfect quality, the compact, enhanced definition Philips 20TA1600 delivers great display and increased picture depth plus virtual surround sound, smart audio/video presets, teletext and even doubles as a PC monitor.

Tuned for optimal picture quality

- Enhanced-definition LCD VGA display, 640 x 480p
- Crystal Clear improves picture depth
- Progressive Scan component video for optimized image quality

Designed for your convenience

- 10 pages Smart Text for fast access to teletext.
- Smart Picture and Smart Sound to personalize your viewing
- PC input lets you also use your TV as a PC monitor

Stylish design

- Compact and slim design that fits in every room
- So slim you can easily mount it on a wall

Crisp and Clear sound

- Virtual Surround Sound for enhanced sound

PHILIPS

Specifications

Picture/Display

- Aspect ratio: 4:3
- Panel resolution: 640 x 480p
- Brightness: 450 cd/m²
- Contrast ratio (typical): 500:1
- Picture enhancement: 3/2 - 2/2 motion pull down, Blue stretch, Black stretch, White stretch, Green enhancement, Progressive scan, Smart Picture, Automatic skin tone correction
- Display screen type: LCD VGA Active Matrix TFT
- Response time (typical): 12 ms
- Viewing angle (horizontal): 170 degree
- Viewing angle (vertical): 170 degree
- Screen enhancement: Anti-Reflection coated screen

Supported Display Resolution

- Computer formats: 640 x 480, 60Hz
- Video formats: 480i, 60Hz, 480p, 60Hz, 576i, 50Hz, 576p, 50Hz, 720p, 60Hz, 1080i, 60Hz

Tuner/Reception/Transmission

- Aerial Input: 75 ohm coaxial (IEC75)
- Tuner bands: Hyperband, S-Channel, UHF, VHF
- TV system: PAL I, PAL B/G, SECAM B/G, SECAM D/K

Convenience

- Child Protection: Child Lock+Parental Control
- Ease of Installation: Autostore, Fine Tuning, PLL Digital Tuning
- Ease of Use: Auto Volume Leveller (AVL), Smart Picture, Smart Sound
- Clock: Sleep Timer
- Screen Format Adjustments: 16:9 compress, 4:3, 4:3 expand
- Remote Control: TV
- Remote control type: RC19335016

- Teletext: 10 page Smart Text
- VESA Mount: 100 x 100 mm (in base)

Sound

- Output power (RMS): 2 x 3 W
- Sound System: Mono, Stereo
- Sound Enhancement: Virtual Surround Sound

Loudspeakers

- Built-in speakers: 2

Connectivity

- AV 1: Audio L/R in, YPbPr
- Front / Side connections: Audio L/R in, CVBS in, Headphone Out, S-video in
- Other connections: PC Audio in, PC-In VGA

Power

- Mains power: 90-264 VAC, 50/60 Hz
- Ambient temperature: 5 °C to 40 °C
- Power consumption: < 55 W
- Standby power consumption: < 1 W

Accessories

- Included accessories: Power cord, Quick start guide, User Manual, Warranty certificate, Remote Control, Batteries for remote control

Dimensions

- Set width (with stand): 590 mm
- Set height (with stand): 448.5 mm
- Set depth (with stand): 236 mm
- Product weight (+stand): 8.3 kg
- Set width (with stand) (inch): 23.2 inch
- Set depth (with stand) (inch): 9.3 inch
- Set height (with stand) (inch): 17.7 inch
- Product weight (+stand) (lb): 18.3 lb

Highlights

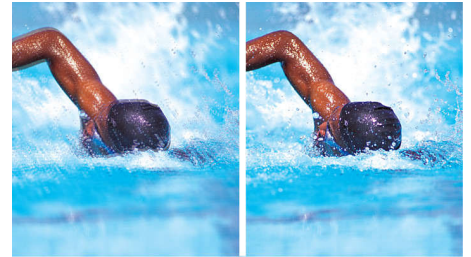
LCD VGA display, 640 x 480p

This VGA display with state-of-the-art LCD screen technology has an enhanced resolution of 640 x 480p.

Crystal Clear

Combining picture enhancements like Contrast plus and color improvement, Crystal Clear improves picture depth.

Progressive Scan



Progressive Scan doubles the vertical resolution of the image resulting in a noticeably sharper picture. Instead of sending a field comprising the odd lines to the screen first, followed by the field with the even lines, both fields are written at one time. A full image is created instantaneously, using the maximum resolution. At such a speed, your eye perceives a sharper picture with no line structure.

Virtual surround sound

Virtual surround sound creates additional audio channels for a theater-like audio experience.

Compact and slim design

This design style emphasizes a slim, compact look that saves space and fits in anywhere.

Slim to mount on the wall

New technology has made the design of the TV so flat that you can hang it on the wall, just like a painting.

PC input

With PC input you can connect your TV to a computer and use the TV as a PC monitor.

Smart Picture and Smart Sound

Philips preset modes for Smart Picture and Smart Sound provide you with direct access via a single key on the remote control. You can select optimized picture and sound settings for the various picture and sound modes.

10 page Smart Text

The teletext is a common system transmitted by most broadcasters. The 10 page smart text feature gives you fast access to information when changing pages.

