



Philips
Professional LCD TV

81 cm (32")
LCD
HD Ready

32HFL3331



The Versatile Hospitality TV

Philips HD LCD TV for Hospitality

This professional TV offers advance hotel mode, great picture quality and system control capability specially designed to ensure reliable operation and maximum guest comfort.

Best total cost of ownership

- USB cloning of all settings for quick installation
- Installation menu locking

Sustainable and safe

- Eco-friendly design & flame retardant housing
- Lead-free/RoHS compliant with flame retardant housing

Advanced hotel features and future proof

- Switch On Channel Programming
- Welcome message on screen display
- Smart Hotel Mode

Great viewing experience and guest comfort

- Digital Crystal Clear for more vivid cinema-like images

PHILIPS

Specifications

Picture/Display

- Aspect ratio: Widescreen
- Diagonal screen size (inch): 32 inch
- Diagonal screen size (metric): 81 cm
- Color cabinet: Black
- Panel resolution: 1366 x 768p
- Brightness: 500 cd/m²
- Picture enhancement: 3/2 - 2/2 motion pull down, 3D Combfilter, Digital Crystal Clear, 1080p 24/25/30Hz processing, 1080p 50/60Hz processing, 2D/3D noise reduction, Active Control, Color Enhancement, Dynamic contrast enhancement, Dynamic Noise Reduction, Jagged Line Suppression, Sharpness Adjustment
- Contrast ratio (typical): 1100:1
- Display screen type: LCD WXGA+ Active Matrix TFT
- Response time (typical): 8 ms
- Viewing angle: 178° (H) / 178° (V)

Supported Display Resolution

- Computer formats: 640 x 480, 60, 72, 75, 85Hz, 800 x 600, 60, 72, 75, 85Hz, 1024 x 768, 60, 70, 75, 85Hz, 1280 x 768, 60Hz, 1280 x 1024, 60Hz, 1360 x 768, 60Hz
- Video formats: 480i, 60Hz, 480p, 60Hz, 576i, 50Hz, 576p, 50Hz, 720p, 50, 60Hz, 1080i, 50, 60Hz, 1080p, 24, 25, 30, 50, 60Hz

Tuner/Reception/Transmission

- Aerial Input: 75 ohm coaxial (IEC75)
- Tuner bands: Hyperband, S-Channel, UHF, VHF
- TV system: PAL D/K, PAL B/G, NTSC
- Video Playback: NTSC, PAL

Convenience

- Ease of Installation: PLL Digital Tuning, Cloning of TV settings, Advanced Hotel Mode, Fine Tuning, Installation menu locking, Keyboard lock-out, Program Name, Security menu access
- Ease of Use: Auto Volume Leveller (AVL), Graphical User Interface, On Screen Display, Side Control, Smart Picture, Smart Sound

- Comfort: Hotel Guest features, Sleep timer, Switch on channel, Volume limitation, Welcome message
- Screen Format Adjustments: 4:3, Widescreen, Movie expand 16:9, Movie expand 14:9, Subtitle Zoom, Super Zoom
- Remote Control: TV
- Remote control type: PF01A09B
- Teletext: 1000 page Smart Text
- Firmware upgradeable: Firmware upgradeable via USB
- Teletext enhancements: 4 favourite pages

Sound

- Output power (RMS): 2 x 8 W
- Sound System: Mono, Stereo, Nicam Stereo
- Sound Enhancement: Incredible Surround, Auto Volume Leveller, Dynamic Bass Enhancement, Treble and Bass Control

Loudspeakers

- Built-in speakers: 2

Connectivity

- AV 1: Audio L/R in, YPbPr
- Connectivity Enhancements: Fast Infrared loop through, Serial Xpress interface
- AV 2: Audio L/R in, YPbPr
- AV 3: Audio L/R in, CVBS in
- EasyLink (HDMI-CEC): One touch play, System standby
- Front / Side connections: Audio L/R in, CVBS in, Headphone Out, HDMI v1.3
- HDMI 1: HDMI v1.3
- Other connections: Monitor out, CVBS, L/R (cinch), PC-in VGA + Audio L/R in, S/PDIF out (coaxial)

Power

- Mains power: 110-240V, 50-60Hz
- Ambient temperature: 5 °C to 40 °C
- Power consumption: 120 W
- Standby power consumption: 0.3 W

Highlights

Digital Crystal Clear

Digital Crystal Clear data processing technology that digitally adjusts and enhances picture quality by automatically adjusting contrast, color and sharpness levels, resulting in a more vibrant and clear image.

EcoDesign

Philips TVs are designed and produced according to the EcoDesign principles aimed at reducing environmental impact, through lower power consumption, removal of hazardous substances, lower weight, more efficient packaging and other measures.

Dimensions

Philips TVs also have a special design for fire safety. The TV set is made of fire-resistant material. In the event of a fire, the TV set can be removed from the room by external sources, without the TV set contributing to the fire.

Box depth 202 mm locking

Philips includes a locking device for installation and convenient carrying. The 202 mm guest convenience and avoid unnecessary reprogramming costs.

Switch On Channel Programming

Perfect for in-house advertising or information channels as it allows to show a predefined channel when the TV is turned on.

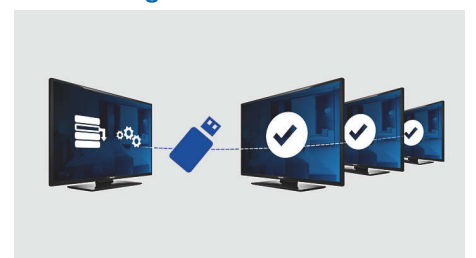
Welcome message

A welcome greeting is displayed each time the TV set is switched on.

Smart Hotel Mode

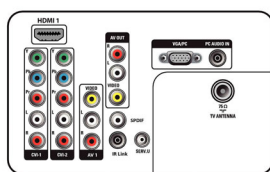
Allows configuration of the TV for limited access, ideal for hotel use. Access to the user menu can be blocked, which enables you to specify channel, picture, and sound settings which your guest will be unable to modify. Picture and sound preferences may be selected from presets on the remote, offering guest selection, but never overwriting your defined settings. Switch on and maximum volume can also be specified so the set always turns on and operates at a comfortable volume. Channels can be blanked to prevent access to premium or adult content. Includes a forced power on mode.

USB Cloning



Provides the ability to easily copy all programming and channel programming settings from one TV into other TV sets in less than a minute. The feature ensures uniformity between TV sets and significantly reduces installation time and costs.

Rear connectors



Side



Issue date 2023-10-02

Version: 1.2.4

EAN: 87 12581 48626 6

© 2023 Koninklijke Philips N.V.
All Rights reserved.

Specifications are subject to change without notice. Trademarks are the property of Koninklijke Philips N.V. or their respective owners.

www.philips.com