



Philips OLED 8 series
4K UHD OLED Android
TV

164 cm (65") Ambilight TV
HDR 10+/ WCG 99%
P5 Pro Perfect Picture Engine



65OLED804

4K UHD OLED Android TV with Ambilight 3-sided

Rich, natural colors. Exquisite detail in bright and dark scenes. From an HDR miniseries to sports, this Philips 4K OLED TV brings lifelike depth and smooth motion to all the content you love. Ambilight completes the picture beautifully.

Android TV-content at your command

- Google Play store and Philips app gallery. More to love.
- Google Assistant. Control the TV with your voice.

Smooth motion. True color. Incredible depth.

- Dolby Vision and Dolby Atmos. Cinematic vision and sound.
- HDR10+. See more of what the director intended.
- A brand new level of realism in picture quality.
- Perfect Natural Reality. More depth, more detail.

Rich sound. Hear every whisper.

- Crisp dialogue. Subtle details. Thunderous effects.
- Detailed audio from an integrated woofer and tweeters

Any source. Always mesmerizing.

- Ambilight. Take the emotion beyond the screen.
- Elegant design. Slender metal bezel and stand.
- 4K UHD OLED TV. This is what lifelike feels like.

PHILIPS

4K UHD OLED Android TV
164 cm (65") Ambilight TV HDR 10+/ WCG 99%, P5 Pro Perfect Picture Engine

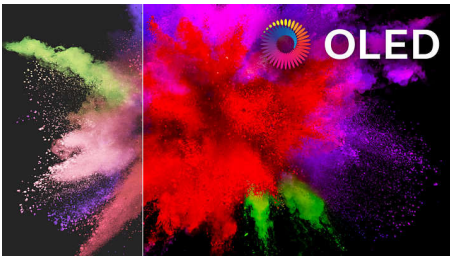
Highlights

Ambilight 3-sided



With Philips Ambilight, movies and games feel more immersive. Music gets a light show. And your screen will feel bigger than it is. Intelligent LEDs around the edges of the TV cast on-screen colours onto the walls, and into the room, in real time. You get perfectly tuned ambient lighting. And one more reason to love your TV.

OLED TV



With a Philips OLED TV, every scene feels impressively real. Individual pixels can be dimmed or turned off, giving deeper blacks, vibrant colours, and astonishing contrast. Even details in shadows and highlights are precisely reproduced. You also get a wider viewing angle and, thanks to the Philips processing engine, beautifully smooth motion.

P5 Pro Perfect Picture Engine

Philips P5 Pro Perfect Picture Engine, with the brand new generation Picture Quality Processor brings you to another level of visual experience. See our OLED TVs with the truest of blacks, vibrant colors, most realistic natural skin tones and incredibly smooth motion. Now you can see every details with greater depth impression, clean and yet sharper picture

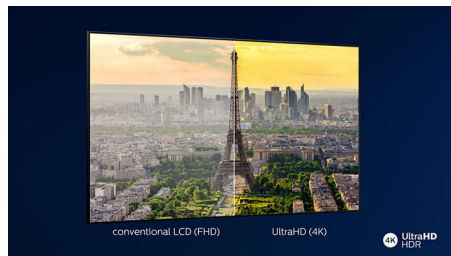
performance. Our Philips OLED TV brings you a new era of picture quality realism.

Dolby Vision and Dolby Atmos



Support for Dolby's premium sound and video formats means the HDR content you watch will look-and sound-gloriously real. Whether it's the latest streaming series or a Blu-Ray disc set, you'll enjoy contrast, brightness, and color that reflect the director's original intentions. And hear spacious sound with clarity, detail, and depth.

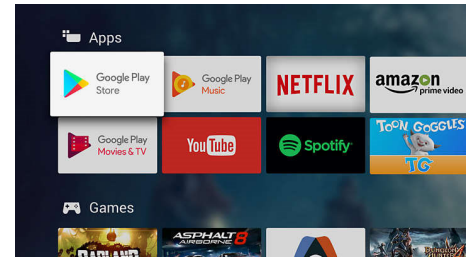
HDR10+



With a Philips HDR10+ TV, picture quality is even more immersive and lifelike. Dynamic metadata enables your TV to adjust brightness levels from frame to frame. From bright skies to candlelit temples, colours look real. Original details are preserved. Contrast is impeccable.

65OLED804/56

TV Content



Go beyond traditional TV programming with Google Play Store and Philips App Gallery. Experience endless movies, TV, music, apps and games online. More to love.

Perfect Natural Reality

Perfect Natural Reality. More depth, more detail.

Crisp dialogue

Crisp dialogue. Subtle details. Thunderous effects.

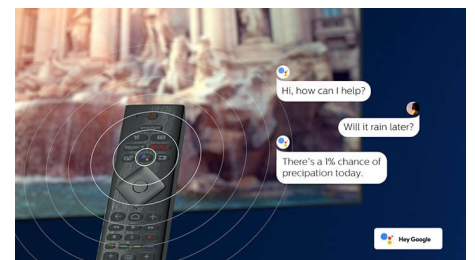
Detailed audio

Detailed audio from an integrated woofer and tweeters

Elegant design.

Elegant design. Slender metal bezel and stand.

Google Assistant



Control your Philips Android TV with your voice. Want to play a game, watch Netflix, or find content and apps in the Google Play store? Just tell your TV. You can even command all Google Assistant-compatible smart home devices-like dimming the lights and setting the thermostat on movie night. Without leaving the sofa.



Specifications

Ambilight

- Ambilight Features: Built in Ambilight+hue, Ambilight Music, Game Mode, Wall colour adaptive, Lounge mode
- Ambilight Version: 3-sided

Picture/Display

- Aspect ratio: 16:9
- Display: 4K Ultra HD OLED
- Panel resolution: 3840x2160
- Picture engine: P5 Pro Perfect Picture Engine
- Picture enhancement: Ultra Resolution, Micro Dimming Perfect, Wide Color Gamut 99% DCI/P3, Dolby Vision, HDR10+, Perfect Natural Motion

Supported Display Resolution

- Computer inputs on all HDMI: up to 4K UHD 3840x2160 @60Hz, HDR supported, HDR10+/HLG
- Video inputs on all HDMI: up to 4K UHD 3840x2160@60Hz, HDR supported, HDR10+/HLG

Tuner/Reception/Transmission

- Digital TV: DVB-T/T2
- Video Playback: NTSC, PAL, SECAM
- MPEG Support: MPEG2, MPEG4
- TV Program guide*: 8 day Electronic Program Guide
- Signal strength indication
- Teletext: 1000 page Hypertext
- HEVC support

Android TV

- OS: Android TV™ 9 (Pie)
- Pre-installed apps: Google Play Movies*, Google Play Music*, Google Search, YouTube
- Memory size(Flash): 16GB*

Smart TV

- SmartTV apps*: Netflix

Smart TV Features

- User Interaction: SimplyShare
- Program: Pause TV, USB recording*
- Ease of Installation: Auto detect Philips devices, Network installation wizard, Settings assistant wizard, Device connection wizard
- Ease of Use: One-stop smart menu button, Onscreen usermanual

- Firmware upgradeable: Firmware auto upgrade wizard, Firmware upgradeable via USB, Online firmware upgrade
- Screen Format Adjustments: Basic - Fill Screen, Fit to screen, Advance - Shift, Zoom, stretch, Wide screen
- Philips TV Remote app*: Apps, Channels, Control, TV Guide

Multimedia Applications

- Video Playback Formats: Containers: AVI, MKV, H264/MPEG-4 AVC, MPEG-1, MPEG-2, MPEG-4, WMV9/VC1, VP9, HEVC (H.265)
- Music Playback Formats: AAC, MP3, WAV, WMA (v2 up to v9.2), WMA-PRO (v9 and v10)
- Subtitles Formats Support: .SRT, .SUB, .TXT, .SMI
- Picture Playback Formats: JPEG, BMP, GIF, PNG, 360 photo, HEIF

Processing

- Processing Power: Quad Core

Sound

- Audio: Output power : 50 Watt (RMS), 2.1 Channel
- Speaker configuration: 10Wx2 mid-high speaker, 30W build-in sub-woofer
- Codec: AC-4, Dolby Atmos, Dolby Digital MS12 V2.3, DTS-HD(M6)
- Sound Enhancement: 5 Band Equalizer, A.I. Sound, Clear Dialogue, Dolby Atmos, Dolby Bass Enhancement, Dolby Volume Leveler, Night mode

Connectivity

- Number of HDMI connections: 4
- HDMI features: 4K, Audio Return Channel, Supports HDMI ALLM (HDMI2.1)
- Number of component in (YPbPr): 1
- EasyLink (HDMI-CEC): Remote control pass-through, System audio control, System standby, One touch play
- Number of USBs: 2
- Wireless connection: Bluetooth 4.2, Wi-Fi 802.11ac, 2x2, Dual band
- Other connections: Digital audio out (optical), Ethernet-LAN RJ-45, Audio L/R in, Headphone out
- HDCP 2.2: Yes on all HDMI

Power

- Mains power: AC 220 - 240 V 50/60Hz

- Ambient temperature: 5 °C to 35 °C
- Power Saving Features: Auto switch-off timer, Light sensor, Picture mute (for radio), Eco mode

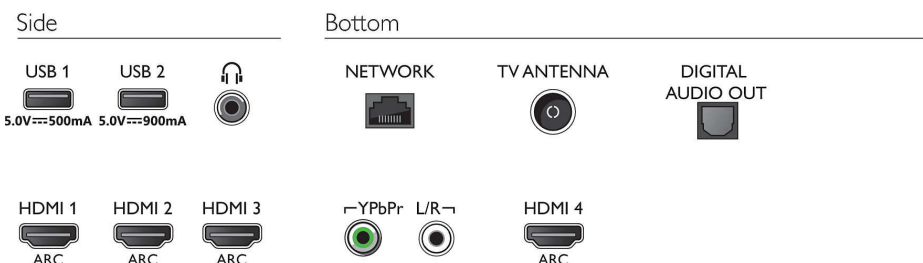
Accessories

- Included Accessories: Legal and safety brochure, Mini-jack to L/R cable, Mini-jack to YPbPr cable, Power cord, Quick start guide (x1), Table top stand, Remote Control, 2 x AAA Batteries

Dimensions

- Set Width: 1448.7 mm
- Set Height: 829.7 mm
- Set Depth: 49.3 mm
- Product weight: 27.9 kg
- Set width (with stand): 1448.7 mm
- Set height (with stand): 843.2 mm
- Set depth (with stand): 280.0 mm
- Product weight (+stand): 28.5 kg
- Box width: 1660.0 mm
- Box height: 1002.0 mm
- Box depth: 174 mm
- Weight incl. Packaging: 36.2 kg
- Wall mount compatible: 300 x 300 mm

Connections



Issue date 2023-10-02

Version: 12.0.1

EAN: 87 18863 02140 8

© 2023 Koninklijke Philips N.V.
All Rights reserved.

Specifications are subject to change without notice.
Trademarks are the property of Koninklijke Philips N.V.
or their respective owners.

www.philips.com

* EPG and actual visibility (up to 8 days) is country and operator dependent.

* Android App offerings vary per country. For more details please visit your local Google Play Store.

* The TV supports DVB reception for 'Free to air' broadcast. Specific DVB operators may not be supported. An up to date list can be found in the FAQ section of the Philips support website. For some operators Conditional Access and subscription are required. Contact your operator for more information.

* Philips TV Remote app and related functionalities vary per TV model, operator, and country, as well as smart device model and OS. For more details please visit: www.philips.com/TVRemoteapp.

* Smart TV app offerings vary per TV model and country. For more details please visit: www.philips.com/smarty.

* Its functionality is subject to ChromeCast built-in apps and smart devices. For more details, please visit ChromeCast built-in product pages.