

# PHILIPS

Full HD Android  
Smart LED TV

6900 series

108 cm (43")

Full HD LED TV

Android / AI voice control



43PFT6915



## Full HD Android Smart LED TV

Family movie night. The big game. Whatever the occasion, settle down to superb picture quality and great sound. This TV makes all your content look great,

### **A TV that's more than Smart, it's beautiful**

- Black arch edge stands
- Borderless design. Another Philips ingenious invention

### **Android TV-content at your command**

- Google Assistant. Control the TV with your voice.
- Android TV. Simply smart.
- Google Play store. More to love

### **Freeview TV | Network channels**

- Freeview Plus (Australia)
- Freeview ( New Zealand )

### **Rich sound. Feel more.**

- Deep bass and crystal-clear dialogue.
- Dolby Digital Plus - improved sound and realistic audio feel

# Highlights

## Freeview Plus (Australia)



Never miss a thing with Freeview! Find out what's on now, next or over the next 7 days with the easy to use TV guide. Looking for your favourite show? Use Search for quick access to all your favourite on demand from ABC iView, SBS On Demand, 7+, 9Now and 10 Play. All in one place, all for free.

## Freeview (New Zealand)



Freeview brings together the best channels and an 8-day TV guide, all free on your TV. You can watch your favourite shows, stay informed with NZ news and current affairs, or channel-surf your heart out - all subscription-free.

## Borderless design

Another Philips ingenious invention, bringing you Philips borderless design Display. Now, you can see more screen images till the edge of your screen, without feeling bothered by a black frame around the Display. A true

genuine art masterpiece that now you can really own in your room. This Display is beautiful and minimally invasive. It transcends beyond time and will definitely blends intricately with your modern interior.

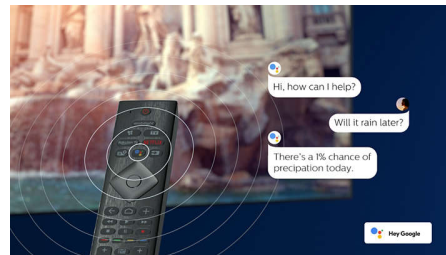
## Black arch edge stands

Dark and incredibly strong. The Philips black arch edge stands in a simple durable construction style on your new TV. It's a wonder how something so small can do so much.

## Android TV

Make your Philips Android TV your own. If it's all about Amazon and YouTube this week, and Netflix next week-no problem. A clear, intuitive interface lets you put the content you love front and center. Easily pick up where you left off in the latest series, or check out the new movie releases.

## Google Assistant



Control your Philips Android TV with your voice. Want to play a game, watch Netflix, or find content and apps in the Google Play store? Just tell your TV. You can even command all Google Assistant-compatible

smart home devices-like dimming the lights and setting the thermostat on movie night. Without leaving the sofa.

## TV content

Go beyond traditional TV programming with Google Play Store . Experience endless movies, TV, music, apps and games online. More to love.

## Dolby Digital Plus

Dolby Digital Plus, the world's leading digital multi-channel audio standards, make use of the way the human ear naturally processes sound, you experience superb quality audio sound with realistic spatial effects.

## DTS HD

DTS HD optimizes sound processing by preserving the original sound content so that you can enjoy a better sound from your speakers with crystal-clear dialog.

# Specifications

## Picture/Display

Aspect ratio: 16:9  
 Display: LED Full HD  
 Picture enhancement: HDR10  
 Panel resolution: 1920 x 1080

## Tuner/Reception/Transmission

Digital TV: DVB-T/T2  
 Video Playback: PAL, SECAM, NTSC  
 MPEG Support: MPEG2, MPEG4  
 TV Program guide\*: 8 day Electronic Program Guide

## Android TV

OS: Android TV™ 9 (Pie)  
 Pre-installed apps: Google Play Movies\*, Google Play Music\*, Google Search, YouTube, Amazon Prime Video, Netflix

## Smart TV

SmartTV apps\*: Netflix, YouTube

## Multimedia Applications

Video Playback Formats: Containers: AVI, MKV, H264/MPEG-4 AVC, MPEG-1, MPEG-2, MPEG-4, WMV9/VC1, VP9, HEVC 265@FHD

Music Playback Formats: AAC, MP3, WAV, WMA (v2 up to v9.2), WMA-PRO (v9 and v10)  
 Subtitles Formats Support: .SMI, .SRT, .SUB, .TXT  
 Picture Playback Formats: JPEG, GIF, PNG, HEIF

## Sound

Output power (RMS): 16W  
 Speaker configuration: 2x8W speaker

## Connectivity

Number of HDMI connections: 3  
 HDMI features: Audio Return Channel  
 Number of USBs: 2  
 Wireless connection: Wi-Fi 802.11n, 2x2, Single band, Bluetooth 4.2  
 Other connections: Headphone out, Digital audio out (optical), Antenna IEC75, Service connector, PC Audio In (3.5mm)  
 SPDIF digital sound output: 1 (Optical)

## Power

Mains power: AC 110-240V 50/60Hz  
 Ambient temperature: 5 °C to 35 °C  
 Standby power consumption: <math>0.5W</math>

## Accessories

Included accessories: Remote Control, 2 x AAA Batteries, Power cord, Quick start guide, Legal and safety brochure, Table top stand

## Dimensions

Box depth: 140 mm  
 Product weight: 6.4 kg  
 Set Width: 955.1 mm  
 Set width (with stand): 995.1 mm  
 Wall mount compatible: 200 x 100 mm  
 Box height: 650 mm  
 Box width: 1070 mm  
 Set Height: 558 mm  
 Weight incl. Packaging: 9.2 kg  
 Set Depth: 71.8 mm  
 Set height (with stand): 618 mm  
 Set depth (with stand): 232.2 mm  
 Product weight (+stand): 6.5 kg



- \* EPG and actual visibility (up to 8 days) is country and operator dependent.
- \* The TV supports DVB reception for 'Free to air' broadcast. Specific DVB operators may not be supported. An up to date list can be found in the FAQ section of the Philips support website. For some operators Conditional Access and subscription are required. Contact your operator for more information.
- \* Smart TV app offerings vary per TV model and country. For more details please visit: [www.philips.com/smarttv](http://www.philips.com/smarttv).
- \* Philips TV does not guarantee 100% interoperability with all HDMI CEC devices
- \* Its functionality is subject to ChromeCast built-in apps and smart devices. For more details, please visit ChromeCast built-in product pages.
- \* Image depicted on the website are non-contractual pictures. Please always refer to the actual TV that are sold in the retail or stores.
- \* Due to the transmission limitations of Bluetooth wireless technology, a slight sound delay might occur when you hear audio from your bluetooth headphone or bluetooth speakers. When this occur, you might see the character moving his or her mouth but there is a slight delay in spoken dialog accompany
- \* Please kindly note that the remote control that is being supplied inside your TV is the most latest and updated version. If you need further information, please approach your local customer service center.