

Philips 8200 series  
4K UHD LED Android TV

**139 cm (55")**  
Major HDR formats supported  
P5 Perfect Picture Engine



**55PUD8215**

## 4K UHD LED Android TV

with P5 Perfect Picture Engine

Family movie night. The big game. Whatever the occasion, settle down to superb picture quality and great sound. This TV makes all your content look great,

### **Android TV-content at your command**

- Google Play store and Philips app gallery. More to love.
- Google Assistant. Control the TV with your voice.
- Android TV. Simply smart.
- Voice control. Google Assistant built-in. Works with Alexa.

### **Slim TV. Beautiful light.**

- Bright 4K LED TV. Vibrant HDR picture. Smooth motion.

### **Smooth motion. Real color. Incredible depth.**

- Philips P5 Engine. Whatever the source, always perfection.
- Dolby Vision and Dolby Atmos. Cinematic vision and sound.

### **Crisp sound. Hear every word.**

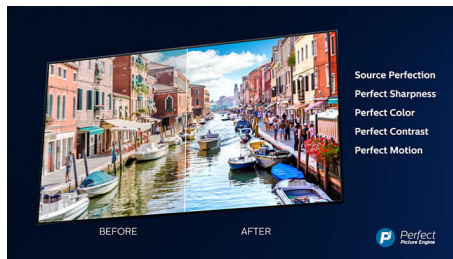
- Well-balanced audio. Crisp, clear dialogue. Punchy effects.

# PHILIPS

4K UHD LED Android TV  
139 cm (55") Major HDR formats supported, P5 Perfect Picture Engine

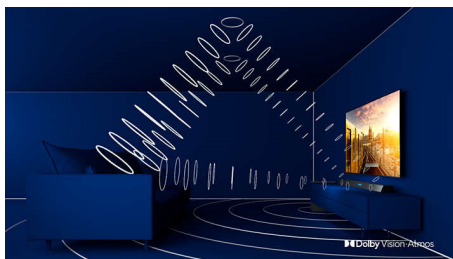
# Highlights

## P5 Perfect Picture Engine



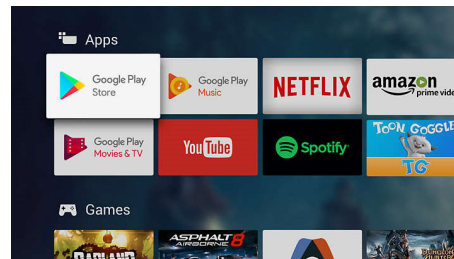
The Philips P5 engine delivers a picture as brilliant as the content you love. Details have noticeably more depth. Colors are vivid, while skin tones look natural. Contrast is so crisp you'll feel every detail. Motion is perfectly smooth.

## Dolby Vision and Dolby Atmos



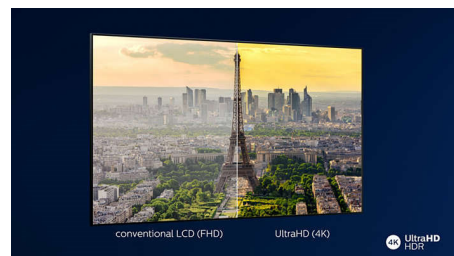
Support for Dolby's premium sound and video formats means the HDR content you watch will look-and sound-gloriously real. Whether it's the latest streaming series or a Blu-Ray disc set, you'll enjoy contrast, brightness, and color that reflect the director's original intentions. And hear spacious sound with clarity, detail, and depth.

## TV Content



Go beyond traditional TV programming with Google Play Store and Philips App Gallery. Experience endless movies, TV, music, apps and games online. More to love.

## 4K UHD



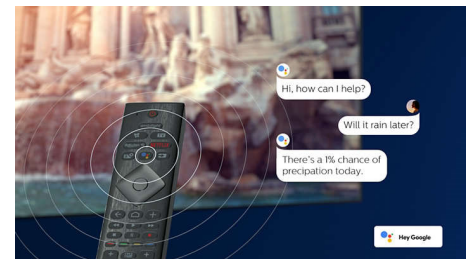
Bright 4K LED TV. Vibrant HDR picture. Smooth motion. A Philips 4K UHD TV brings content to life with rich colors and crisp contrast. Images have more depth, and motion is smooth. Movies, shows, games, and more look great no matter the source.

## Android TV

Make your Philips Android TV your own. If it's all about Amazon and YouTube this week, and Netflix next week-no problem. A clear, intuitive interface lets you put the content you love front and center. Easily pick up where you left off in the latest series, or check out the new movie releases.

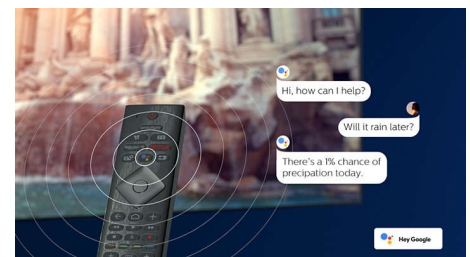
55PUD8215/71

## Google Assistant



Control your Philips Android TV with your voice. Want to play a game, watch Netflix, or find content and apps in the Google Play store? Just tell your TV. You can even command all Google Assistant-compatible smart home devices-like dimming the lights and setting the thermostat on movie night. Without leaving the sofa.

## Voice assistant



Control your Philips Android TV with your voice. Want to play a game, watch Netflix, or find content and apps in the Google Play store? Just tell your TV. You can even command all Google Assistant-compatible smart home devices, like dimming the lights and setting the thermostat on movie night. Without leaving the sofa. The days of searching for the TV remote are over. Now you can use your voice to control your Philips smart TV via Alexa-enabled devices, like Amazon Echo. Turn your TV on, change the channel, switch to your gaming console and more with Alexa.

## Well-balanced audio

Well-balanced audio. Crisp, clear dialogue. Punchy effects.



androidtv



# Specifications

## Picture/Display

- Aspect ratio: 16:9
- Display: 4K Ultra HD LED
- Panel resolution: 3840x2160
- Picture engine: P5 Perfect Picture Engine
- Picture enhancement: Ultra Resolution, Micro Dimming Pro

## Supported Display Resolution

- Computer inputs on all HDMI: HDR supported, HDR10/ HLG, up to 4K UHD 3840x2160 @60Hz
- Video inputs on all HDMI: up to 4K UHD 3840x2160@60Hz, HDR10/HLG (Hybrid Log Gamma), HDR10+/Dolby Vision

## Tuner/Reception/Transmission

- Digital TV: ISDB-T
- Video Playback: NTSC, PAL, SECAM
- MPEG Support: MPEG2, MPEG4
- TV Program guide\*: 8 day Electronic Program Guide
- Signal strength indication
- HEVC support

## Android TV

- OS: Android TV™ 9 (Pie)
- Pre-installed apps: Google Play Movies\*, Google Play Music\*, Google Search, YouTube
- Memory size(Flash): 16GB\*
- Memory size to install apps: 5GB

## Smart TV

- SmartTV apps\*: Netflix

## Smart TV Features

- User Interaction: SimplyShare
- Program: Pause TV, USB recording\*
- Ease of Installation: Auto detect Philips devices, Network installation wizard, Settings assistant wizard
- Ease of Use: One-stop smart menu button, Onscreen usermanual
- Firmware upgradeable: Firmware auto upgrade wizard, Firmware upgradeable via USB, Online firmware upgrade
- Screen Format Adjustments: Basic - Fill Screen, Fit to screen, Advance - Shift, Zoom, stretch
- Philips TV Remote app\*: Apps, Channels, Control, TV Guide

## Multimedia Applications

- Video Playback Formats: Containers: AVI, MKV, H264/MPEG-4 AVC, MPEG-1, MPEG-2, MPEG-4, WMV9/VC1, HEVC (H.265), VP9
- Music Playback Formats: AAC, MP3, WAV, WMA (v2 up to v9.2), WMA-PRO (v9 and v10)
- Subtitles Formats Support: .SRT, .SUB, .TXT, .SMI
- Picture Playback Formats: JPEG, BMP, GIF, PNG, 360 photo, HEIF

## Processing

- Processing Power: Quad Core

## Sound

- Output power (RMS): 16W
- Speaker configuration: 2x8W full range speaker
- Sound Enhancement: Auto Volume Leveler, Dolby Atmos, Clear Sound, Smart Sound

## Connectivity

- Number of HDMI connections: 4
- HDMI features: 4K, Audio Return Channel
- EasyLink (HDMI-CEC): Remote control pass-through, System audio control, System standby, One touch play
- Number of USBs: 2
- Wireless connection: Bluetooth 4.2, Wi-Fi 802.11n, 2x2, Dual band
- Other connections: Digital audio out (optical), Ethernet-LAN RJ-45, Headphone out
- HDCP 2.2: Yes on all HDMI

## Power

- Mains power: AC 220 - 240 V 50/60Hz
- Ambient temperature: 5 °C to 35 °C
- Power Saving Features: Auto switch-off timer, Picture mute (for radio), Light sensor

## Accessories

- Included accessories: Remote Control, Quick start guide, Legal and safety brochure, Power cord, Table top stand
- Included batteries: 2 x AAA Batteries

## Dimensions

- Set Width: 1226.8 mm
- Set Height: 718.8 mm
- Set Depth: 86.6 mm
- Product weight: 11.5 kg
- Set width (with stand): 1226.8 mm
- Set height (with stand): 783.1 mm

- Set depth (with stand): 262.7 mm
- Product weight (+stand): 11.8 kg
- Box width: 1360.0 mm
- Box height: 860.0 mm
- Box depth: 160.0 mm
- Weight incl. Packaging: 15.8 kg
- Wall mount compatible: 200 x 200 mm

## Connections

### Side



### Bottom



Issue date 2024-04-20

Version: 3.1.1

EAN: 87 18863 02602 1

© 2024 Koninklijke Philips N.V.  
All Rights reserved.

Specifications are subject to change without notice.  
Trademarks are the property of Koninklijke Philips N.V.  
or their respective owners.

[www.philips.com](http://www.philips.com)

\* EPG and actual visibility (up to 8 days) is country and operator dependent.

\* Android App offerings vary per country. For more details please visit your local Google Play Store.

\* The TV supports DVB reception for 'Free to air' broadcast. Specific DVB operators may not be supported. An up to date list can be found in the FAQ section of the Philips support website. For some operators Conditional Access and subscription are required. Contact your operator for more information.

\* Philips TV Remote app and related functionalities vary per TV model, operator, and country, as well as smart device model and OS. For more details please visit: [www.philips.com/TVRemoteapp](http://www.philips.com/TVRemoteapp).

\* Smart TV app offerings vary per TV model and country. For more details please visit: [www.philips.com/smarttv](http://www.philips.com/smarttv).

\* Please note that your Amazon Apps may not always be available in your country. (Currently Amazon apps works only in UK, Germany, Austria)

\* Its functionality is subject to ChromeCast built-in apps and smart devices. For more details, please visit ChromeCast built-in product pages.