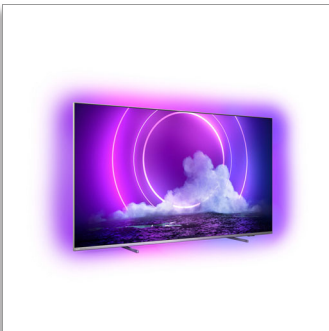


Philips LED  
4K UHD LED Android TV

P5 Perfect Picture Engine

Dolby Atmos sound  
Ambilight 4 sided  
164 cm (65") Android TV



65PUS9206

## Movies to get lost in. Gaming you can feel.

### 4K UHD LED Android TV

From gaming thrills to movies, get all the way inside the action. This 4K UHD TV gives you a brilliant picture and smooth, fluid motion-no matter what's happening onscreen. Ambilight game and movie modes add to the immersion.

#### **Smooth motion. Real colour. Incredible depth.**

- Well-balanced audio. Crisp, clear dialogue. Punchy effects.
- Vibrant HDR picture. Philips 4K UHD TV.
- Cinematic vision and sound. Dolby Vision and Dolby Atmos
- Great for gaming. Low latency on any console
- Whatever the source, always perfection. Philips P5 engine.

#### **Immerse yourself in the action.**

- All-round immersion. 4 sided Ambilight.
- Premium design. From stand to remote.
- Metal stand height adjusts to accommodate a soundbar.

#### **Content at your command.**

- Voice control. The Google Assistant. Works with Alexa.
- Multi-room audio. DTS Play-Fi
- Simply smart. Android TV.

# PHILIPS

# Highlights

## 4 sided Ambilight



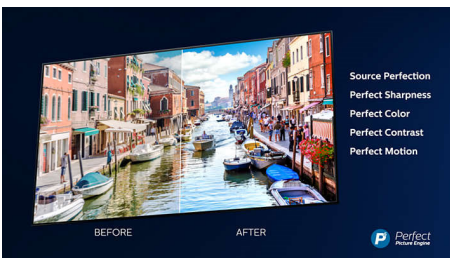
With Philips 4 sided Ambilight, every moment feels closer. Intelligent LEDs around the edge of the TV respond to the on-screen action and emit an immersive glow that's simply captivating. Experience it once and wonder how you enjoyed TV without it.

## HDMI 2.1 VRR and low latency



Your Philips TV boasts the latest HDMI 2.1 connectivity and it automatically switches to a low-latency setting when you start playing a game on your console. VRR and Freesync are supported for smooth fast-action gameplay. Ambilight's gaming mode brings the thrill right into the room.

## Philips P5 Picture Engine



The Philips P5 engine delivers a picture as brilliant as the content you love. Details have noticeably more depth. Colours are vivid, while skin tones look natural. Contrast is so

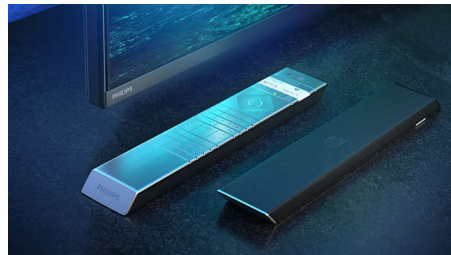
crisp you'll feel every detail. Motion is perfectly smooth.

## Dolby Vision + Dolby Atmos



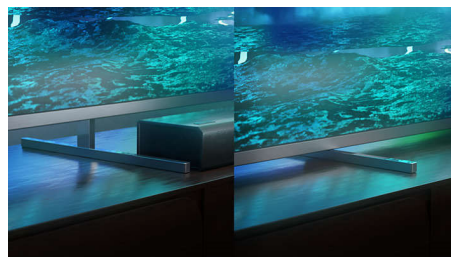
Support for Dolby's premium sound and video formats means that the HDR content that you watch will look—and sound—glorious. You'll enjoy a picture that reflects the director's original intentions and experience spacious sound with real clarity and depth.

## Premium materials



Every inch of this TV looks and feels premium. The polished metal stand contrasts beautifully with a virtually bezel-free screen. While the soft, textured leather-backed remote with backlit keys is as good to hold as it is to use.

## Height-adjustable stand



You can adjust the height of this TV stand for soundbars. Fit the stand risers to raise the stand to the upper position and your soundbar

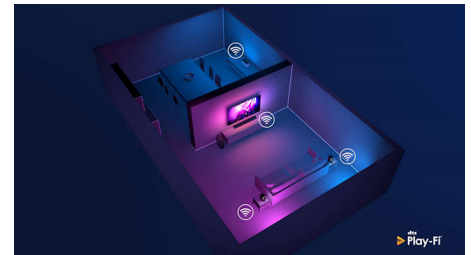
won't block the bottom of the screen. No soundbar? No need to attach the risers.

## Simply smart. Android TV



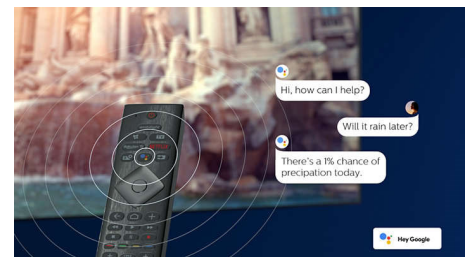
Your Philips Android TV gives you the content you want—when you want it. You can customise the home screen to display your favourite apps, making it simple to start streaming the movies and shows you love. Or pick up where you left off.

## DTS Play-Fi compatible



With DTS Play-Fi on your Philips TV you can connect to compatible speakers in any room. Got wireless speakers in the kitchen? Listen to the film while you make a snack or keep up with the sports commentary while you get everyone drinks.

## AI voice control



Push a button on the remote to talk to the Google Assistant. Control the TV or Google Assistant-compatible smart home devices with your voice. Or ask Alexa to control the TV via Alexa-enabled devices.



# Specifications

## Ambilight

- Ambilight Features: Built-in Ambilight+hue, Ambilight Music, Game Mode, Wall colour adaptive, Lounge mode, AmbiWakeUp, AmbiSleep, Philips Wireless Home Speakers
- Ambilight Version: 4 sided

## Picture/Display

- Aspect ratio: 16:9
- Diagonal screen size (inch): 65 inch
- Diagonal screen size (metric): 164 cm
- Display: 4K Ultra HD LED
- Panel resolution: 3840 x 2160
- Picture engine: P5 Perfect Picture Engine
- Picture enhancement: HDR10+, Dolby Vision, Ultra Resolution, Micro Dimming Pro, Perfect Natural Motion, A.I. PQ mode, CalMAN Ready, ISF Colour Management
- Diagonal screen size (inch): 65 inch

## Supported Display Resolution

- Computer inputs on HDMI 1/2: HDMI 2.1 supported, HDR supported, HDR10+/HLG
- Computer inputs on HDMI 3/4: HDMI 2.0 supported
- Video inputs on HDMI 1/2: HDMI 2.1 supported, HDR supported, HDR10+/HLG
- Video inputs on HDMI 3/4: HDMI 2.0 supported

## Tuner/Reception/Transmission

- Digital TV: DVB-T/T2/T2-HD/C/S/S2
- Video Playback: PAL, SECAM
- MPEG Support: MPEG2, MPEG4
- TV Programme guide\*: 8-day Electronic Programme Guide
- Signal strength indication
- Teletext: 1000 page Hypertext
- HEVC support

## Android TV

- OS: Android TV™ 10 (Q)
- Pre-installed apps: Google Play Movies\*, Google Play Music\*, Google Search, YouTube, Netflix, Amazon instant video, BBC iPlayer, Amazon Prime Video, Disney+, Fitness App, Spotify
- Memory size (Flash): 16 GB\*

## Smart TV Features

- User Interaction: SimplyShare
- Interactive TV: HbbTV
- Programme: Pause TV, USB recording\*
- Ease of Installation: Auto detect Philips devices, Device connection wizard, Network installation wizard, Settings assistant wizard
- Ease of Use: One-stop smart menu button, On-screen user manual
- Firmware upgradeable: Firmware auto upgrade wizard, Firmware upgradeable via USB, Online firmware upgrade, FW download in background
- Screen Format Adjustments: Basic - Fill Screen, Fit to screen, Advance - Shift, Zoom, stretch, Wide screen

- Remote Control: with Voice, with Key light, with Muirhead leather
- Voice assistant\*: Google Assistant built in, RC with Mic., Works with Alexa

## Multimedia Applications

- Video Playback Formats: Containers: AVI, MKV, H264/ MPEG-4 AVC, MPEG-1, MPEG-2, MPEG-4, VP9, HEVC (H.265), AV1
- Music Playback Formats: AAC, MP3, WAV, WMA (v2 up to v9.2), WMA-PRO (v9 and v10)
- Subtitles Formats Support: .SRT, .SUB, .TXT, .SMI
- Picture Playback Formats: JPEG, BMP, GIF, PNG, 360 photo, HEIF

## Processing

- Processing Power: Quad Core

## Sound

- Audio: 2.1 Channel, Output power: 50 Watt (RMS)
- Speaker configuration: 10 W x 2 mid-high speaker, 30 W sub-woofer
- Codec: Dolby Atmos compatible, Dolby Digital MS12 V2.5, DTS-HD(M6)
- Sound Enhancement: Dolby Atmos®, A.I. Sound, Clear Dialogue, Night mode, A.I. EQ, Dolby Bass Enhancement, Dolby Volume Leveller, DTS Play-Fi, Mimi Sound Personalisation

## Connectivity

- Number of HDMI connections: 4
- HDMI features: 4K, Audio Return Channel
- EasyLink (HDMI-CEC): Remote control pass-through, System audio control, System standby, One touch play
- Number of USBs: 3
- Wireless connection: Wi-Fi 802.11ac, 2 x 2, Dual band, Bluetooth 5.0
- Other connections: Satellite Connector, Common Interface Plus (CI+), Digital audio out (optical), Ethernet-LAN RJ-45, Headphone out, Service connector
- HDCP 2.3: Yes on all HDMI
- HDMI ARC: Yes for all ports
- HDMI eARC: Yes on HDMI2
- HDMI VRR: FreeSync Premium, Yes on all HDMI ports

## EU Energy card

- EPREL registration numbers: 687635
- Diagonal screen size (inch): 65
- Diagonal screen size (metric): 164
- Energy class for SDR: F
- On mode power demand for SDR: 99 kWh/1000h
- Energy class for HDR: G
- On mode power demand for HDR: 200 kWh/1000h
- Off mode power consumption: n.a.
- Networked standby mode: <math>2.0\text{ W}</math>
- Panel technology used: LED LCD

## Power

- Mains power: AC 220 - 240 V 50/60 Hz
- Ambient temperature: 5°C to 35°C
- Standby power consumption: <math>0.3\text{ W}</math>
- Power Saving Features: Auto switch-off timer, Picture mute (for radio), Light sensor, Eco mode

## Accessories

- Included accessories: Remote Control, Quick start guide, Legal and safety brochure, Power cord, Tabletop stand
- Included batteries: 2 x AAA Batteries

## Design

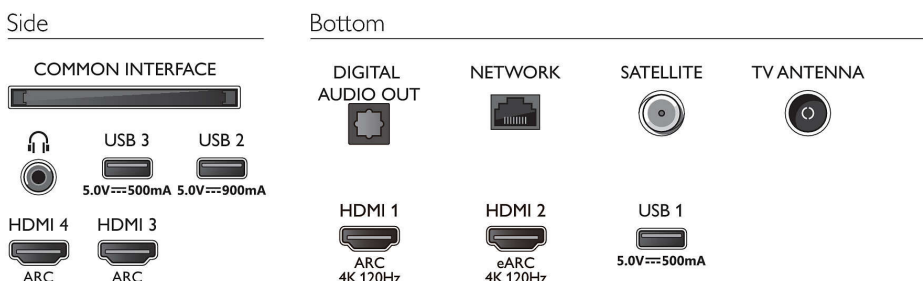
- Colours of TV: Mid silver metal bezel
- Stand design: Metal dual tone finish sticks

## Dimensions

- Set Width: 1449.6 mm
- Set Height: 834.8 mm
- Set Depth: 83.7 mm
- Product weight: 24.9 kg
- Set width (with stand): 1449.6 mm
- Set height (with stand): 857.8/ 907.8 mm
- Set depth (with stand): 326.8 mm
- Product weight (+stand): 25.6 kg
- Box width: 1600.0 mm
- Box height: 995.0 mm
- Box depth: 170.0 mm
- Weight incl. Packaging: 32.4 kg
- Stand width: 803.0/ 1223.0 mm
- Stand height: 20.0/ 70.0 mm
- Stand depth: 326.8 mm
- Wall-mount compatible: 300 x 300 mm



## Connections



Issue date 2023-07-23

Version: 7.6.1

EAN: 87 18863 02885 8

© 2023 Koninklijke Philips N.V.  
All Rights reserved.

Specifications are subject to change without notice.  
Trademarks are the property of Koninklijke Philips N.V.  
or their respective owners.

[www.philips.com](http://www.philips.com)

- \* EPG and actual visibility (up to 8 days) is country- and operator-dependent.
- \* Android App offerings vary per country. For more details please visit your local Google Play Store.
- \* The TV supports DVB reception for 'Free to air' broadcast. Specific DVB operators may not be supported. An up to date list can be found in the FAQ section of the Philips support website. For some operators Conditional Access and subscription are required. Contact your operator for more information.
- \* Philips TV Remote app and related functionalities vary per TV model, operator and country, as well as smart device model and OS. For more details please visit: [www.philips.com/TVRemoteapp](http://www.philips.com/TVRemoteapp).
- \* USB recording for digital channels only, recordings may be limited by broadcast copy protection (CI+). Country and channel restrictions may apply.
- \* This television contains lead only in certain parts or components where no technology alternatives exist in accordance with existing exemption clauses under the RoHS Directive.
- \* Memory size (Flash): 16 G, the actual available disc space may differ (dependent on e.g. (pre-)installed apps, installed operating system, etc.)
- \* Google Assistant is available on Philips Android TVs running on Android O (8) or higher OS version. Google Assistant is available in selected languages and countries.
- \* Amazon Prime is available in selected languages and countries.
- \* Amazon, Alexa and all related logos are trademarks of Amazon.com, Inc. or its affiliates. Amazon Alexa is available in selected languages and countries.
- \* Netflix subscription required. Subject to terms on <https://www.netflix.com>
- \* Disney+ subscription required. Subject to terms at <https://www.disneyplus.com> (c) 2020 Disney and its related entities. Disney+ is available in selected languages and countries.
- \* Rakuten TV is available in selected languages and countries.