



Philips LED
4K UHD LED Android TV

Dolby Atmos sound
Major HDR formats supported
139 cm (55") Android TV



55PUT7406

Smart looks. Smart operation. Vibrant picture.

4K HDR Android TV

If it's a movie today, shows and games tomorrow, and sports on the weekend-this Philips 4K smart TV will always give you a vibrant picture. You get cinematic vision and sound with Dolby Vision and Dolby Atmos, and seamless Android smarts.

Smooth motion. Great color and depth.

- Cinematic vision and sound. Dolby Vision and Dolby Atmos

Looks great off or on

- Vibrant HDR picture. Philips 4K UHD TV.
- Slim, attractive design
- Black matte bezel. Slender feet.

Content at your command.

- Simply smart. Android TV.
- Google Assistant. Control the TV with your voice.

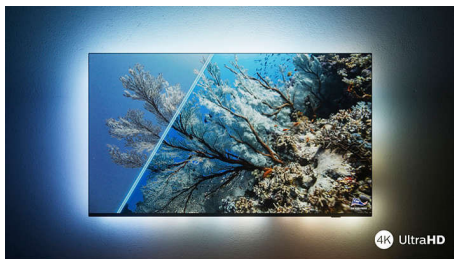
PHILIPS

4K UHD LED Android TV
Dolby Atmos sound Major HDR formats supported, 139 cm (55") Android TV

55PUT7406/56

Highlights

Supports all major HDR formats



Your Philips 4K UHD TV is compatible with all major HDR formats, including Dolby Vision. Whether it's a must-watch series or the latest video game, shadows will be deeper. Bright surfaces will shine. Colors will be truer.

Dolby Vision + Dolby Atmos



Support for Dolby's premium sound and video formats means the HDR content you watch

will look-and sound-glorious. You'll enjoy a picture that reflects the director's original intentions and experience spacious sound with real clarity and depth.

Simply smart. Android TV



Your Philips Android TV gives you the content you want-when you want it. You can customize the home screen to display your favorite apps, making it simple to start streaming the movies and shows you love. Or pick up where you left off.

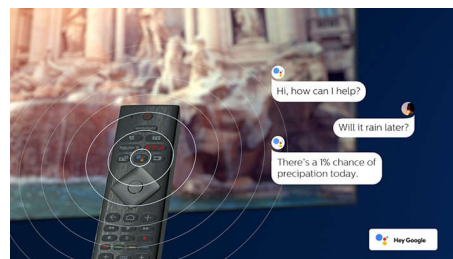
Design

Black matte bezel. Slender feet.

Design

Looking for a TV that fits with your room? This 4K smart TV is dressed for the occasion! The virtually bezel-free screen goes with just about any interior scheme. While the slim feet make it seem as if the screen is floating above your TV unit or table.

Google Assistant



Control your Philips Android TV with your voice. Want to play a game, watch Netflix, or find content and apps in the Google Play store? Just tell your TV. You can even command all Google Assistant-compatible smart home devices-like dimming the lights and setting the thermostat on movie night. Without leaving the sofa.



Specifications

Picture/Display

- Aspect ratio: 16:9
- Display: 4K Ultra HD LED
- Panel resolution: 3840x2160
- Picture engine: Pixel Precise Ultra HD
- Picture enhancement: Ultra Resolution, Dolby Vision, HLG (Hybrid Log Gamma), HDR10+ compatible

Supported Display Resolution

- Computer inputs on all HDMI: up to 4K UHD 3840x2160 @60Hz, HDR supported, HDR10/HLG
- Video inputs on all HDMI: up to 4K UHD 3840x2160@60Hz, HDR supported, HDR10/HLG (Hybrid Log Gamma), HDR10+/Dolby Vision

Tuner/Reception/Transmission

- Digital TV: DVB-T/T2
- Video Playback: PAL, SECAM
- MPEG Support: MPEG2, MPEG4
- TV Program guide*: 8 day Electronic Program Guide
- Signal strength indication
- HEVC support

Android TV

- OS: Android TV™ 10 (Q)
- Pre-installed apps: Amazon Prime Video, Netflix*, YouTube

Smart TV Features

- SmartTV apps*: Online video stores, Youtube, Netflix TV
- Ease of Use: One-stop smart menu button, Onscreen usermanual
- Firmware upgradeable: Firmware auto upgrade wizard, Firmware upgradeable via USB, Online firmware upgrade, App upgrade in background
- Screen Format Adjustments: Advance - Shift, Basic - Fill Screen, Fit to screen, Zoom, stretch, Wide screen
- Voice assistant*: Google Assistant built-in

Multimedia Applications

- Video Playback Formats: Containers: AVI, MKV, H264/MPEG-4 AVC, MPEG-1, MPEG-2, MPEG-4, HEVC (H.265), VP9, AV1
- Music Playback Formats: AAC, MP3, WAV, WMA (v2 up to v9.2), WMA-PRO (v9 and v10)

- Subtitles Formats Support: .SML, .SRT, .SUB, .TXT, .ASS, .SSA
- Picture Playback Formats: JPEG, BMP, GIF, PNG, HEIF

Processing

- Processing Power: Quad Core

Sound

- Output power (RMS): 20W
- Speaker configuration: 2x10W full range speaker
- Sound Enhancement: Clear Dialogue, Dolby Atmos, Auto Volume Leveler, Dolby Bass Enhancement

Connectivity

- Number of HDMI connections: 4
- HDMI features: Audio Return Channel, 4K
- EasyLink (HDMI-CEC): Remote control pass-through, System audio control, System standby, One touch play
- Number of USBs: 2
- Wireless connection: Wi-Fi 802.11n, 2x2, Dual band, Bluetooth 5.0
- Other connections: Digital audio out (optical), Ethernet-LAN RJ-45, Headphone out
- HDCP 2.3: Yes on all HDMI
- HDMI ARC: Yes on HDMI1

Power

- Mains power: AC 220 - 240 V 50/60Hz
- Ambient temperature: 5 °C to 35 °C
- Power Saving Features: Auto switch-off timer, Picture mute (for radio), Eco mode, Light sensor

Accessories

- Included accessories: Remote Control, 2 x AAA Batteries, Power cord, Quick start guide, Legal and safety brochure, Table top stand

Dimensions

- Set Width: 1227 mm
- Set Height: 712.1 mm
- Set Depth: 87.1 mm
- Product weight: 11.5 kg
- Set width (with stand): 1227 mm
- Set height (with stand): 742.7 mm
- Set depth (with stand): 248 mm
- Product weight (+stand): 11.7 kg
- Box width: 1360.0 mm

- Box height: 840.0 mm
- Box depth: 160.0 mm
- Weight incl. Packaging: 17 kg
- Wall mount compatible: 200 x 200 mm

Connections

Side



Issue date 2023-10-02

Version: 2.0.1

EAN: 87 18863 03208 4

© 2023 Koninklijke Philips N.V.
All Rights reserved.

Specifications are subject to change without notice.
Trademarks are the property of Koninklijke Philips N.V.
or their respective owners.

www.philips.com

* EPG and actual visibility (up to 8 days) is country and operator dependent.
* The TV supports DVB reception for 'Free to air' broadcast. Specific DVB operators may not be supported. An up to date list can be found in the FAQ section of the Philips support website. For some operators Conditional Access and subscription are required. Contact your operator for more information.
* Philips TV Remote app and related functionalities vary per TV model, operator, and country, as well as smart device model and OS. For more details please visit: www.philips.com/TVRemoteapp.
* Smart TV app offerings vary per TV model and country. For more details please visit: www.philips.com/smarttv.
* Amazon Prime is available in selected languages and countries.
* Google Assistant is available on Philips Android TVs running on Android O (8) or higher OS version. Google Assistant is available in selected languages and countries.
* Netflix subscription required. Subject to terms at <https://www.netflix.com>
* Image depicted on the website are non-contractual pictures. Please always refer to the actual TV that are sold in the retail or stores.