

PHILIPS

4K UHD LED
Android TV

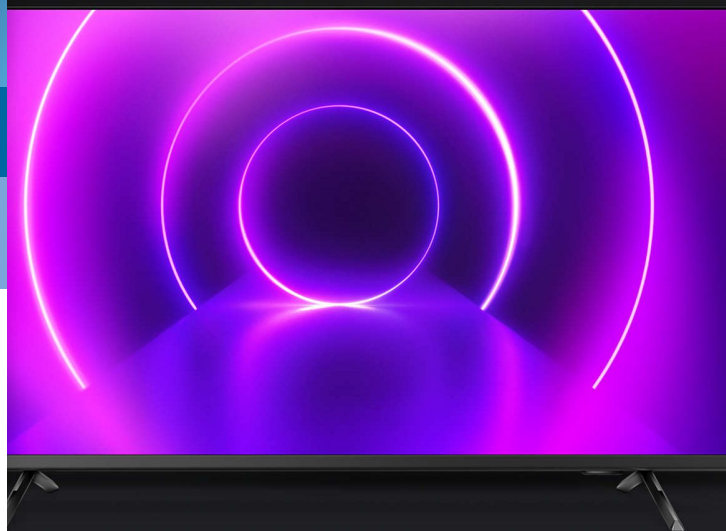
8100 series

108 cm (43")

Major HDR formats supported



43PUT8135



4K UHD LED Android TV

Family movie night. The big game. Whatever the occasion, settle down to superb picture quality and great sound. This TV makes all your content look great,

Slim TV. Beautiful light.

- Bright 4K LED TV. Vibrant HDR picture. Smooth motion.

Android TV-content at your command

- Google Assistant. Control the TV with your voice.
- Android TV. Simply smart.

A TV that's more than Smart, it's beautiful

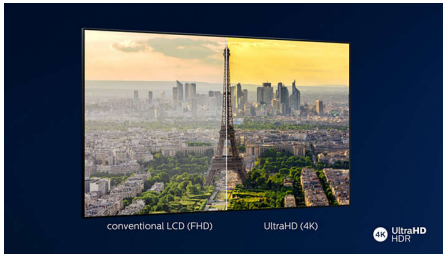
- Borderless design. Another Philips ingenious invention.

Smooth motion. Real color. Incredible depth.

- Dolby Vision and Dolby Atmos. Cinematic vision and sound.
- HDR10+ supported. See more of what the director intended.

Highlights

4K UHD

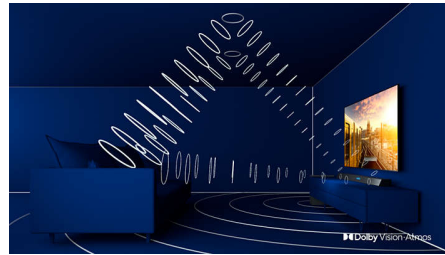


Bright 4K LED TV. Vibrant HDR picture. Smooth motion. A Philips 4K UHD TV brings content to life with rich colors and crisp contrast. Images have more depth, and motion is smooth. Movies, shows, games, and more look great no matter the source.

Android TV

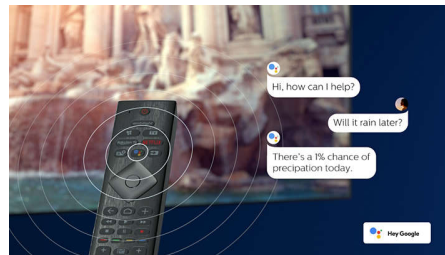
Make your Philips Android TV your own. If it's all about Amazon and YouTube this week, and Netflix next week—no problem. A clear, intuitive interface lets you put the content you love front and center. Easily pick up where you left off in the latest series, or check out the new movie releases.

Dolby Vision and Dolby Atmos



Support for Dolby's premium sound and video formats means the HDR content you watch will look—and sound—gloriously real. Whether it's the latest streaming series or a Blu-Ray disc set, you'll enjoy contrast, brightness, and color that reflect the director's original intentions. And hear spacious sound with clarity, detail, and depth.

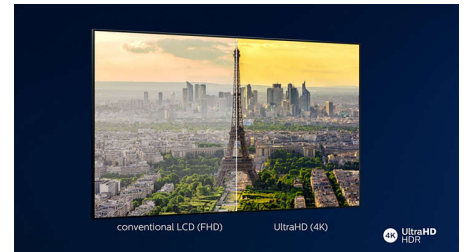
Google Assistant



Control your Philips Android TV with your voice. Want to play a game, watch Netflix, or find content and apps in the Google Play store? Just tell your TV. You can even command all Google Assistant-compatible

smart home devices—like dimming the lights and setting the thermostat on movie night. Without leaving the sofa.

HDR10+ supported



Your Philips TV is primed to get the most out of the HDR10+ video format. Contrast, color, and brightness levels are adjusted from frame to frame. Whether it's a must-watch series or the new blockbuster, shadows will be deeper. Bright surfaces will shine. Colors will be truer.

Borderless design

Another Philips ingenious invention, bringing you Philips borderless design TV. Now, you can see more screen images till the edge of your screen, without feeling bothered by a black frame around the TV. A true genuine art masterpiece that now you can really own in your room. This TV is beautiful and minimally invasive. It transcends beyond time and will definitely blends intricately with your modern interior.

Specifications

Picture/Display

Aspect ratio: 16:9

Display: 4K Ultra HD LED

Picture enhancement: Ultra Resolution

Panel resolution: 3840x2160

Diagonal screen size (inch): 43 inch

Supported Display Resolution

Computer inputs on all HDMI: HDR supported, HDR10/ HLG, up to 4K UHD 3840x2160 @60Hz

Video inputs on all HDMI: up to 4K UHD 3840x2160@60Hz, HDR10/HLG (Hybrid Log Gamma), HDR10+/Dolby Vision

Tuner/Reception/Transmission

Digital TV: DVB-T/T2

Video Playback: NTSC, PAL, SECAM

MPEG Support: MPEG2, MPEG4

TV Program guide*: 8 day Electronic Program Guide

Signal strength indication

HEVC support

Android TV

Pre-installed apps: Google Play Movies*, Google Play Music*, Google Search, YouTube, Netflix

Memory size to install apps: 4GB

Smart TV

SmartTV apps*: Netflix, YouTube

Smart TV Features

User Interaction: SimplyShare

Program: Pause TV, USB recording*

Ease of Installation: Network installation wizard, Settings assistant wizard

Ease of Use: One-stop smart menu button, Onscreen usermanual

Firmware upgradeable: Firmware auto upgrade wizard, Firmware upgradeable via USB, Online firmware upgrade

Screen Format Adjustments: Basic - Fill Screen, Fit to screen, Advance - Shift, Zoom, stretch

Multimedia Applications

Video Playback Formats: Containers: AVI, MKV, H264/MPEG-4 AVC, MPEG-1, MPEG-2, MPEG-4, HEVC (H.265), VP9, WMV9/VC1

Music Playback Formats: AAC, MP3, WAV, WMA (v2 up to v9.2), WMA-PRO (v9 and v10)

Subtitles Formats Support: .SRT, .SUB, .TXT, .SMI

Picture Playback Formats: JPEG, BMP, GIF, PNG, 360 photo, HEIF

Processing

Processing Power: Quad Core

Sound

Output power (RMS): 16W

Sound Enhancement: Auto Volume Leveler, Dolby Atmos, Clear Sound, Smart Sound

Speaker configuration: 8Wx2 full range speaker

Connectivity

Number of HDMI connections: 4

HDMI features: 4K, Audio Return Channel

EasyLink (HDMI-CEC): Remote control pass-through, System audio control, System standby, One touch play

Number of USBs: 2

Wireless connection: Wi-Fi 802.11n, 2x2, Dual band, Bluetooth 5.0

Other connections: Digital audio out (optical), Ethernet-LAN RJ-45, Headphone out

HDCP 2.2: Yes on all HDMI

Power

Mains power: AC 110 - 240 V 50/60Hz

Ambient temperature: 5 °C to 35 °C

Power Saving Features: Auto switch-off timer, Picture mute (for radio)

Accessories

Included accessories: Remote Control, Quick start guide, Legal and safety brochure, Power cord, Table top stand

Included batteries: 2 x AAA Batteries

Dimensions

Box depth: 140 mm

Product weight: 7.6 kg

Set Width: 958 mm

Set width (with stand): 958 mm

Wall mount compatible: 100 x 200 mm

Box height: 650 mm

Box width: 1070 mm

Set Height: 568 mm

Weight incl. Packaging: 10.5 kg

Set Depth: 82 mm

Set height (with stand): 618.5 mm

Set depth (with stand): 218.6 mm

Product weight (+stand): 7.8 kg

* EPG and actual visibility (up to 8 days) is country and operator dependent.

* Android App offerings vary per country. For more details please visit your local Google Play Store.

* The TV supports DVB reception for 'Free to air' broadcast. Specific DVB operators may not be supported. An up to date list can be found in the FAQ section of the Philips support website. For some operators Conditional Access and subscription are required. Contact your operator for more information.

* Smart TV app offerings vary per TV model and country. For more details please visit: www.philips.com/smarttv.

* Please note that your Amazon Apps may not always be available in your country. (Currently Amazon apps works only in UK, Germany, Austria)

* Its functionality is subject to ChromeCast built-in apps and smart devices. For more details, please visit ChromeCast built-in product pages.

* Netflix subscription required. Subject to terms at <https://www.netflix.com>

* Google Assistant is available on Philips Android TVs running on Android O (8) or higher OS version. GA is available in selected languages and countries. Supported language/countries list is going to be expanded overtime. For latest language and countries support list please contact our consumer care.

* Image depicted on the website are non-contractual pictures. Please always refer to the actual TV that are sold in the retail or stores.

* Due to the transmission limitations of Bluetooth wireless technology, a slight sound delay might occur when you hear audio from your bluetooth headphone or bluetooth speakers. When this occur, you might see the character moving his or her mouth but there is a slight delay in spoken dialog accompany

