

Philips LED
4K UHD MiniLED Android
TV

P5 AI perfect picture engine
Dolby Atmos sound
4 sided Ambilight TV
164 cm (65") Android TV



65PML9506

Big on feeling. Big on detail.

4K UHD MiniLED Android TV

Deep blacks. Vibrant colours. From gaming to movies, feel more with this Philips MiniLED TV. You get a picture so lifelike you'll want to reach out and touch it. All made even bigger and more immersive with the magic of 4 sided Ambilight

Smooth motion. True colour. Incredible depth.

- Vibrant HDR picture. Philips 4K UHD TV.
- Cinematic vision and sound. Dolby Vision and Dolby Atmos
- Great for gaming. Ultra-low latency on any console
- Whatever you watch, a picture so real. P5 engine with AI.
- Well-balanced audio. Crisp, clear dialogue. Punchy effects.

Big. Bright. Beautiful.

- All-round immersion. 4 sided Ambilight.
- Metal stand height adjusts to accommodate a soundbar.
- Premium-quality materials. From stand to remote.
- Big-screen brilliance. Mini LED TV.

Content at your command.

- Voice control. The Google Assistant. Works with Alexa.
- Multi-room audio. DTS Play-Fi
- Simply smart. Android TV.

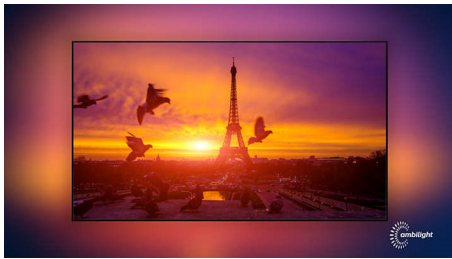
PHILIPS

4K UHD MiniLED Android TV
P5 AI perfect picture engine Dolby Atmos sound, 4 sided Ambilight TV, 164 cm (65") Android TV

65PML9506/12

Highlights

4 sided Ambilight



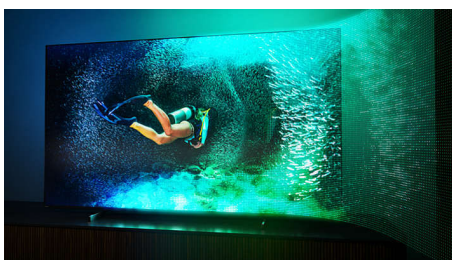
With Philips 4 sided Ambilight, every moment feels closer. Intelligent LEDs around the edge of the TV respond to the on-screen action and emit an immersive glow that's simply captivating. Experience it once and wonder how you enjoyed TV without it.

HDMI 2.1 VRR and low latency



Your Philips TV boasts the latest HDMI 2.1 connectivity and automatically switches to an ultra-low-latency setting when you start playing a game on your console. VRR and Freesync are supported for smooth fast-action gameplay. Ambilight's gaming mode brings the thrill right into the room.

Mini LED TV



Your Philips Mini LED TV supports all major HDR formats and gives you a truly impressive big-screen picture with deep blacks and lifelike colours. Over a thousand intelligent backlight zones are independently dimmed or

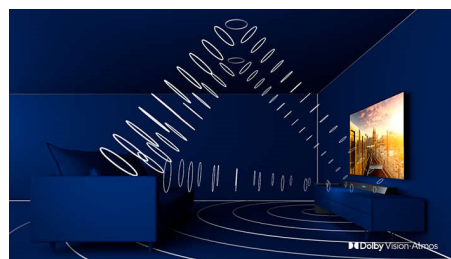
brightened to enable pin-sharp contrast and real depth.

P5 engine with AI



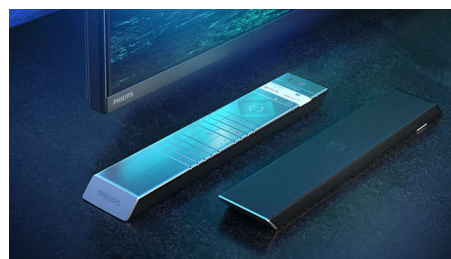
Philips P5 processor with AI delivers a picture so real it feels like you could step right into it. A deep-learning AI algorithm processes images in a manner similar to the human brain. No matter what you're watching, you get lifelike detail and contrast, rich colour and smooth motion.

Dolby Vision + Dolby Atmos



Support for Dolby's premium sound and video formats means that the HDR content that you watch will look—and sound—glorious. You'll enjoy a picture that reflects the director's original intentions and experience spacious sound with real clarity and depth.

Premium materials



This TV boasts premium materials wherever you look. The polished metal edges of the feet contrast beautifully with the brushed metal

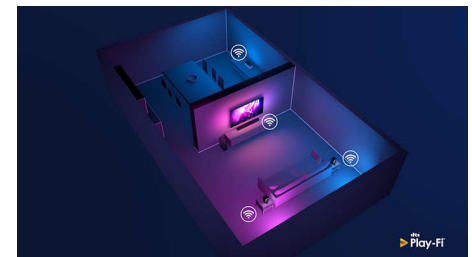
bezel. While the soft, textured leather-backed remote is as easy to hold as it is to look at.

Simply smart. Android TV



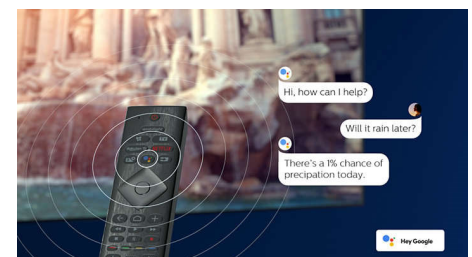
Your Philips Android TV gives you the content you want—when you want it. You can customise the home screen to display your favourite apps, making it simple to start streaming the movies and shows you love. Or pick up where you left off.

DTS Play-Fi compatible



With DTS Play-Fi on your Philips TV you can connect to compatible speakers in any room. Got wireless speakers in the kitchen? Listen to the film while you make a snack or keep up with the sports commentary while you get everyone drinks.

AI voice control



Push a button on the remote to talk to the Google Assistant. Control the TV or Google Assistant-compatible smart home devices with your voice. Or ask Alexa to control the TV via Alexa-enabled devices.



4K UHD MiniLED Android TV
P5 AI perfect picture engine Dolby Atmos sound, 4 sided Ambilight TV, 164 cm (65") Android TV

65PML9506/12

Specifications

Ambilight

- Ambilight Features: Built-in Ambilight+hue, Ambilight Music, Game Mode, Wall colour adaptive, Lounge mode, AmbiWakeup, AmbiSleep, Philips Wireless Home Speakers
- Ambilight Version: 4 sided

Picture/Display

- Aspect ratio: 16:9
- Diagonal screen size (inch): 65 inch
- Diagonal screen size (metric): 164 cm
- Display: 4K Ultra HD LED
- Panel resolution: 3840 x 2160
- Picture engine: P5 AI Perfect Picture Engine
- Picture enhancement: Ultra Resolution, Dolby Vision, HDR10+, CalMAN Ready, ISF Colour Management, Perfect Natural Motion, Wide Colour Gamut 95% DCI/P3, Micro Dimming Premium
- Diagonal screen size (inch): 65 inch

Supported Display Resolution

- Computer inputs on HDMI 1/2: HDMI 2.1 supported, HDR supported, HDR10+/HLG
- Computer inputs on HDMI 3/4: HDMI 2.0 supported
- Video inputs on HDMI 1/2: HDMI 2.1 supported, HDR supported, HDR10+/HLG
- Video inputs on HDMI 3/4: HDMI 2.0 supported

Tuner/Reception/Transmission

- Digital TV: DVB-T/T2/T2-HD/C/S/S2
- Video Playback: PAL, SECAM
- MPEG Support: MPEG2, MPEG4
- TV Programme guide*: 8-day Electronic Programme Guide
- Signal strength indication
- Teletext: 1000 page Hypertext
- HEVC support

Android TV

- OS: Android TV™ 10 (Q)
- Pre-installed apps: Google Play Movies*, Google Play Music*, Google Search, YouTube, Amazon instant video, BBC iPlayer, Netflix, Amazon Prime Video, Disney+, Fitness App, Spotify
- Memory size (Flash): 16 GB*

Smart TV Features

- User Interaction: SimplyShare
- Interactive TV: HbbTV
- Programme: Pause TV, USB recording*
- Ease of Installation: Auto detect Philips devices, Device connection wizard, Network installation wizard, Settings assistant wizard
- Ease of Use: One-stop smart menu button, On-screen user manual
- Firmware upgradeable: Firmware auto upgrade wizard, Firmware upgradeable via USB, Online firmware upgrade, FW download in background
- Screen Format Adjustments: Basic - Fill Screen, Fit to screen,

Advance - Shift, Zoom, stretch, Wide screen

- Remote Control: with Voice, with Key light, with Muirhead leather
- Voice assistant*: Google Assistant built in, RC with Mic., Works with Alexa

Multimedia Applications

- Video Playback Formats: Containers: AVI, MKV, H264/ MPEG-4 AVC, MPEG-1, MPEG-2, MPEG-4, HEVC (H.265), VP9, AV1
- Music Playback Formats: AAC, MP3, WAV, WMA (v2 up to v9.2), WMA-PRO (v9 and v10)
- Subtitles Formats Support: .SRT, .SUB, .TXT, .SMI
- Picture Playback Formats: JPEG, BMP, GIF, PNG, 360 photo, HEIF

Processing

- Processing Power: Quad Core

Sound

- Audio: Output power: 50 Watt (RMS), 2.1 Channel
- Speaker configuration: 10 W x 2 mid-high speaker, 30 W sub-woofer
- Codec: DTS-HD(M6), Dolby Atmos®, Dolby Digital MS12 V2.5
- Sound Enhancement: A.I. Sound, Clear Dialogue, Dolby Bass Enhancement, Dolby Volume Leveller, Night mode, Dolby Atmos®, A.I. EQ, DTS Play-Fi, Mimi Sound Personalisation

Connectivity

- Number of HDMI connections: 4
- HDMI features: 4K, Audio Return Channel
- EasyLink (HDMI-CEC): Remote control pass-through, System audio control, System standby, One touch play
- Number of USBs: 3
- Wireless connection: Wi-Fi 802.11ac, 2 x 2, Dual band, Bluetooth 5.0
- Other connections: Common Interface Plus (CI+), Digital audio out (optical), Satellite Connector, Ethernet-LAN RJ-45, Headphone out, Service connector
- HDCP 2.3: Yes on all HDMI
- HDMI ARC: Yes for all ports
- HDMI eARC: Yes on HDMI2
- HDMI VRR: FreeSync Premium, Yes on all HDMI ports

EU Energy card

- EPREL registration numbers: 597528
- Diagonal screen size (inch): 65
- Diagonal screen size (metric): 164
- Energy class for SDR: F
- On mode power demand for SDR: 93 kWh/1000h
- Energy class for HDR: G
- On mode power demand for HDR: 149 kWh/1000h
- Off mode power consumption: n.a.
- Networked standby mode: <2.0 W
- Panel technology used: LED LCD

Power

- Mains power: AC 220 - 240 V 50/60 Hz
- Ambient temperature: 5°C to 35°C
- Standby power consumption: <0.3 W
- Power Saving Features: Auto switch-off timer, Light sensor, Picture mute (for radio), Eco mode

Accessories

- Included accessories: Legal and safety brochure, Power cord, Quick start guide, Remote Control, Tabletop stand
- Included batteries: 2 x AAA Batteries

Design

- Colours of TV: Mid silver metal bezel
- Stand design: Metal wedge sticks

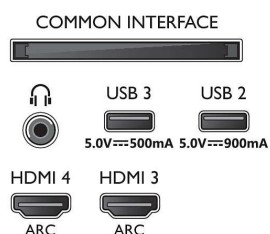
Dimensions

- Set Width: 1449.0 mm
- Set Height: 830.5 mm
- Set Depth: 76.4 mm
- Product weight: 28.0 kg
- Set width (with stand): 1449.0 mm
- Set height (with stand): 858.9/ 898.9 mm
- Set depth (with stand): 279.6 mm
- Product weight (+stand): 28.6 kg
- Box width: 1600.0 mm
- Box height: 995.0 mm
- Box depth: 170.0 mm
- Weight incl. Packaging: 38.2 kg
- Stand width: 806.6/ 1225.8 mm
- Stand height: 30.0/ 70.0 mm
- Stand depth: 279.6 mm
- Wall-mount compatible: 400 x 200 mm

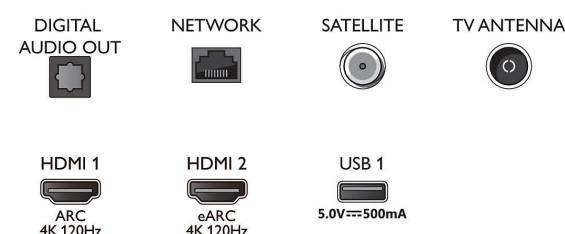


Connections

Side



Bottom



Issue date 2023-07-23

Version: 9.6.1

EAN: 87 18863 02886 5

© 2023 Koninklijke Philips N.V.
All Rights reserved.

Specifications are subject to change without notice.
Trademarks are the property of Koninklijke Philips N.V.
or their respective owners.

www.philips.com

* EPG and actual visibility (up to 8 days) is country- and operator-dependent.

* Android App offerings vary per country. For more details please visit your local Google Play Store.

* The TV supports DVB reception for 'Free to air' broadcast. Specific DVB operators may not be supported. An up to date list can be found in the FAQ section of the Philips support website. For some operators Conditional Access and subscription are required. Contact your operator for more information.

* Philips TV Remote app and related functionalities vary per TV model, operator and country, as well as smart device model and OS. For more details please visit: www.philips.com/TVRemoteapp.

* USB recording for digital channels only, recordings may be limited by broadcast copy protection (CI+). Country and channel restrictions may apply.

* This television contains lead only in certain parts or components where no technology alternatives exist in accordance with existing exemption clauses under the RoHS Directive.

* Memory size (Flash): 16 G, the actual available disc space may differ (dependent on e.g. (pre-)installed apps, installed operating system, etc.)

* Google Assistant is available on Philips Android TVs running on Android O (8) or higher OS version. Google Assistant is available in selected languages and countries.

* Amazon Prime is available in selected languages and countries.

* Amazon, Alexa and all related logos are trademarks of Amazon.com, Inc. or its affiliates. Amazon Alexa is available in selected languages and countries.

* Netflix subscription required. Subject to terms on <https://www.netflix.com>

* Disney+ subscription required. Subject to terms at <https://www.disneyplus.com> (c) 2020 Disney and its related entities. Disney+ is available in selected languages and countries.

* Rakuten TV is available in selected languages and countries.