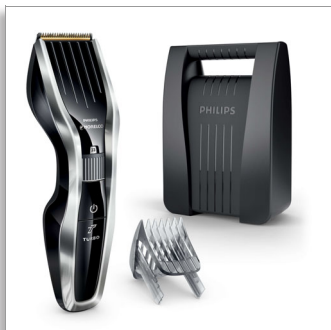




Philips Norelco Hairclipper  
7100, series 7000  
Hair clipper

### Titanium Blades

24 length settings  
120mins cordless use/1h charge  
Turbo boost



HC7452/40

## Lithium-Ion cordless power

Cuts 2x faster with DualCut Technology\*

The HAIRCLIPPER 7100 is engineered to perform, time after time. It offers cordless power, a lithium-ion battery and turbo boost. The Series 7000 comes with titanium blades and one adjustable comb for all the lengths you need.

#### Easy to use

- Quick release blades for easy cleaning
- 120 minutes of cordless use after a 1-hour charge

#### Performance

- Extra sharp blades for an extra sharp result
- Double-sharpened cutting element with reduced friction
- Turbo power button boosts cutting speed

#### Precise length control

- Easy to select and lock in 24 length settings

#### Built to last

- The blades never need oiling
- Hard case for reliable storage
- 2yr warranty plus 3yrs when you register the product online

**PHILIPS**  
**NORELCO**

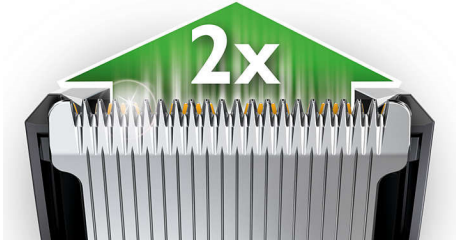
## Hair clipper

Titanium Blades 24 length settings, 120mins cordless use/1h charge, Turbo boost

HC7452/40

# Highlights

### DualCut Technology



Power through any hair type with our advanced DualCut Technology, which combines a double-sharpened cutting element with low-friction engineering. The innovative cutting element is designed to perform time after time, cutting hair twice as fast as regular Philips clippers, with a robust stainless steel guard for ultimate durability.\*

### Titanium blades



Get a perfect yet protective trim with self-sharpening titanium-coated steel blades created for long-lasting performance, time after time.

### One comb, 24 length settings



Designed for a hassle-free cutting experience and easier storage, one adjustable comb offers every length setting you will need. Simply adjust

the comb to select and lock in the length you want, with 23 length settings from 1 to 23mm (3/64" to 7/8"), and precisely 1mm (3/64") between each length. Or you can use it without the comb for a close 0.5mm (1/32") trim.

### Corded & powerful cordless use



Use the clipper corded or cordless for maximum power and freedom. The powerful Lithium-Ion battery provides up to 120 minutes of cordless power after only 1 hour of charging.

### Turbo boost



The turbo power button boosts cutting speed for a perfect cut even on the thickest hair.

### Washable Blades



Simply click open the detachable head to quickly release and wash the blades.

### 5-yr worldwide warranty offer



All of our grooming products are built to last. They come with a worldwide warranty and worldwide voltage compatibility. Simply register your clipper on [www.philips.com/welcome](http://www.philips.com/welcome) to receive an additional 3 years on top of your standard 2-year Philips warranty, giving you a 5-year worldwide warranty in total.

### Hard storage case



Your clipper comes with a reliable hard case for complete durability, to ensure it is kept in optimum condition for ultimate power and precision, time after time.

### No oil needed



No oil needed, for easy maintenance and to save you time.



## Hair clipper

Titanium Blades 24 length settings, 120mins cordless use/1h charge, Turbo boost

HC7452/40

# Specifications

### Power system

- Charging time: 1 hour(s)
- Battery type: Lithium-Ion
- Operation: Corded and cordless
- Running time: Up to 120 minutes

### Storage

- Case: Hard case

### Service

- 2-year guarantee: Yes, Plus 3-years with registration

### Cutting system

- Cutting element: Titanium blades
- Cutter width: 41mm (1 11/16")
- Number of length settings: 24
- Range of length settings: From 0.5-23 mm (1/32" to 7/8")
- Precision (size of steps): By 1mm (3/64")

### Ease of use

- Cleaning: Washable blades
- Maintenance free: No oil needed



Issue date 2023-04-20

Version: 11.0.1

EAN: 00 75020 04107 4

© 2023 Koninklijke Philips N.V.  
All Rights reserved.

Specifications are subject to change without notice.  
Trademarks are the property of Koninklijke Philips N.V.  
or their respective owners.

[www.philips.com](http://www.philips.com)

\* Versus its Philips predecessor