

PHILIPS

Wet & Dry epilator

Satinelle Advanced

For legs, body and face

1 accessory

Cordless and rechargeable

S-shaped handle design



BRE610/01



Firmly grips even fine hairs

Easy to steer for effortless long lasting results

The S-shaped handle helps steer all over the body. The widest head with ceramic discs epilates close to the skin to grab even fine hairs for quick and long lasting results. Wet & dry use with 1 accessory.

Easy and effortless usage

- S-shaped handle for easy maneuverability on all body areas
- Unique light ensures you don't miss fine hairs
- Wet & dry for use in bath or shower

Personalized body routine solutions

- Body care heads for personalized and convenient solutions
- Includes massage cap

Thorough results

- Epilation head of unique ceramic material for better grip
- Patented epilation system
- Extra wide epilator head
- Always use at a 90 degree angle for the best performance

Highlights

Wet & dry use



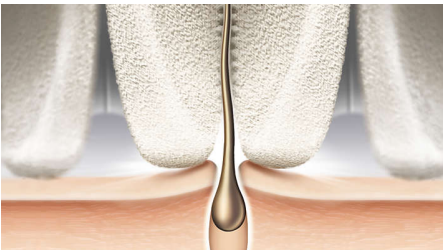
For a gentle and comfortable use during your shower or bath routine with anti slip grip for optimal wet & dry use.

S-shaped handle design



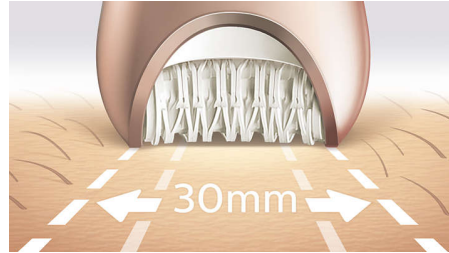
The ergonomic handle is easy to hold and steer for maximum control and optimal reach on all body areas.

Micro ridged ceramic discs



Our epilator head is unique in being made from a rough ceramic material that grabs hair firmly, even fine hairs won't slip from its grip.

Extra wide epilator head



Extra wide epilator head covers more skin with every stroke for faster hair removal.

Patented epilation system



All of our Philips epilators have a unique system where the tweezers lift and gather the lying hair, guide them to the pulling point firmly grabbing and pulling out the hair. Combined with the unique round ceramic discs it epilates closer to the skin for optimal results and more gentleness.

Opti-light



Unique light ensures you don't miss fine hairs for best epilation results for all body parts.

Body care heads

Body care heads will bring more personalized and convenient solutions to her individual beauty routine for hair removal and beyond.

Massage cap



Massage cap eases the epilation sensation.

90 degree angle



The Philips Satinelle will always give you the best performance when used at a 90 degree angle.

Specifications

Accessories

Pouch: Basic pouch
Cleaning brush
Massage cap

Power

Battery Type: Lithium-ion
Charging: Rechargeable, 5 min quick charge, 1.5 hour charging time
Usage time: up to 40 minutes

Technical specifications

Number of catching points: 32
Number of discs: 17
Voltage: 15V / 5.4W
Pulling actions/second speed 1: 960
Pulling actions/second speed 2: 1066

Features

Speed settings: 2 settings

Ease of use

Cordless
Handle: S-shape handle
Wet and dry use
Opti-light

Performance

Epilation discs: Ceramic discs
Epilator head: 30 mm
Epilation system: Patented epilation system

