

PHILIPS

Cordless shaver with
Wet and Dry use

Lady Shaver Series
8000

With Facial Hair Remover

For body and face

+5 accessories



BRL166/91



Smooth skin. Anywhere, anytime

Lady Shaver and Facial Hair Remover

Philips Lady Shaver Series 8000 is a complete hair removal solution for body and face. This special edition with Facial Hair Remover makes it quick and easy to remove even the finest body and facial hair. For smooth skin whenever, wherever

A skin friendly shave

- Rounded trimmer tips for a skin-friendly shave

Effortless smoothness

- A smooth and gentle shave
- Floating single foil for an even shave
- Exfoliation glove helps prevent ingrown hairs

Easy to use and control

- Up to 40 mins cordless usage
- Built-in mirror and full circle LED light
- Wet & Dry for use in bath or shower

On-the-go Facial Hair Remover

- Skin-friendly touch up with Facial Hair Remover

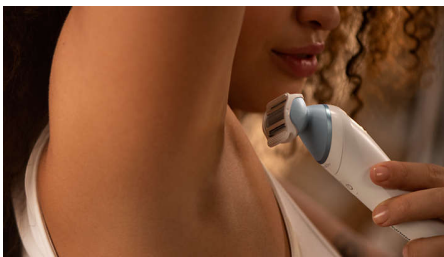
Highlights

Skin-friendly touch up



Philips Facial Hair Remover is specifically designed for women to gently remove from peach to sturdy hairs on the upper lip, chin and cheeks. It gives results without pain and includes hypoallergenic head for a skin-friendly experience****

A smooth and gentle shave



Philips Lady Shaver Series 8000 is designed to be gentle and comfortable on the skin in different body areas*. 80% of our consumers confirm no razor burns and redness**. Achieve hair-free skin without compromise on skin comfort

Mirror and full circle light



The built-in mirror makes it easy to use and helps you miss no hair. The full circle LED-light ensures maximum visibility to spot and effectively remove even the finest hairs

Rounded trimmer tips



Rounded trimmer tips in front of and behind the shaving foil keep the shaver gliding smoothly over your skin. 78% of women agree that rounded trimmer tips prevent scratches***

Floating single foil



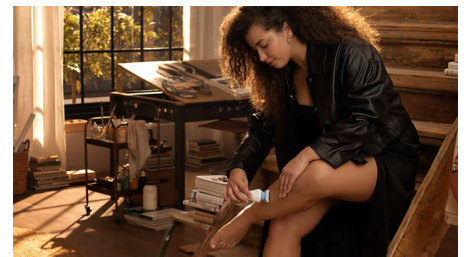
The floating foil glides naturally over your curves and contours, maintaining close contact with your skin for an even shave

Wet & Dry use



For a gentle and comfortable use during your shower or bath routine with anti-slip grip for optimal Wet & Dry use.

Cordless use



With rechargeable battery, Philips Lady Shaver Series 8000 provides up to 40 mins cordless use

Exfoliation glove



The use of the exfoliation glove helps prevent ingrown hairs in between shaving

Specifications

Accessories

Pouch: Basic pouch
Cleaning brush
Trimming comb
Soft glide cap
Skin stretcher cap
Exfoliation glove
Facial Hair Remover

Power

Battery Type: NiMH
Charging: Rechargeable, 10 hours charging time
Usage time: up to 40 minutes

Technical specifications

Voltage: 5V/7.5 W
Material foil: Nickel
Number of shaving foils: 1
USB-A cable
Speed settings: 1

Ease of use

Cordless
Handle: Ergonomic
Wet and dry use
Rechargeable

Performance

Shaving head: Single foil shaver
Skin care features: Rounded trimmer tips

