

Philips
Shaving heads

Discontinued
Buy SH71 instead

SH70/60



Reset your shaver to new

Change heads every 2 years for the best results

Within two years your shaver heads cut 9 million hairs on your face. Replace the shaver heads and get back to 100% performance. Compatible with the Series 7000 Shaver.

Easy to use

- Reset your shaver after replacing shaving heads
- Easy to replace shaving heads
- Replace your shaving heads in just two steps
- Reset your shaver to new

Compatibility

- Replacement heads for Series 7000 Shaver

A close and smooth shave

- Blades protect skin and cut close even with three-day stubble

PHILIPS

Shaving heads
Discontinued Buy SH71 instead

Highlights

Compatible with Series 7000



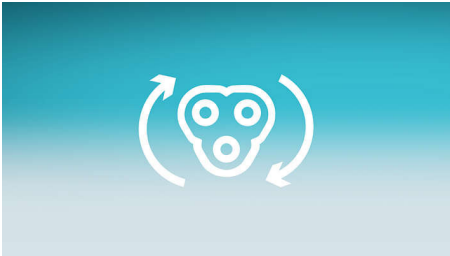
SH70 replacement heads are compatible with Series 7000 Shaver (S7xxx) and Star Wars shaver SW7700.

GentlePrecision PRO blades



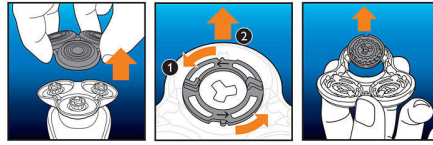
Our updated cutting system has skin protection technology, designed to only cut hair not skin. V-shaped blades guide the skin away from the blades for a close, smooth shave — even on three-day stubble.

Replacement reminder



The latest Philips shavers have an inbuilt replacement reminder in the form of a shaving unit symbol. This symbol will light up and indicate when to replace the shaving heads.

Simple replacement



1. Open the shaver by pressing the "release" button;
2. Remove the retainer by turning the lock anticlockwise;
3. Take out the old shaving heads and carefully insert the replacements; check that the heads align exactly in the setting;
4. Replace the retainer and secure it by turning the lock clockwise;
5. When you close the shaving head properly, you will hear it click into place.

How to reset your shaver



After replacing the shaving heads, you can reset the replacement reminder by pressing the on/off button for more than 7 seconds. Otherwise, the replacement trigger will turn off automatically after 9 successive shaves.

Reset your shaver to new



To get back to 100% performance, replace your shaving heads every 2 years.

SH70/60

Specifications

Shaving heads

- Fits product type: Shaver series 7000 (S7xxx)
- Upgraded shaving heads: SH70 has been replaced by SH71

Cleaning

- Usage: Use cleaning spray HQ110



Issue date 2023-03-30

Version: 10.1.1

© 2023 Koninklijke Philips N.V.
All Rights reserved.

Specifications are subject to change without notice.
Trademarks are the property of Koninklijke Philips N.V.
or their respective owners.

www.philips.com