

PHILIPS

Hair Dryer with SenselQ
and 3 attachments

Prestige

Personalised technology

Smart digital programs

Powerful drying: 30% faster*

Up to 95%** moisture lock-in



BHD827/00



Unique hair. Unique care.

Hair dryer with SenselQ: senses, adapts and cares

The new Philips Hair Dryer Prestige with SenselQ technology senses the temperature of your hair and adjusts the heat over 12,000* times to prevent overheating. Leaving your hair looking so healthy it shines.

Easy to use

- Easy digital interface
- Smart digital programs

Attachments

- Relaxing scalp massager
- Styling nozzle
- Volumising curl diffuser

Care for your hair

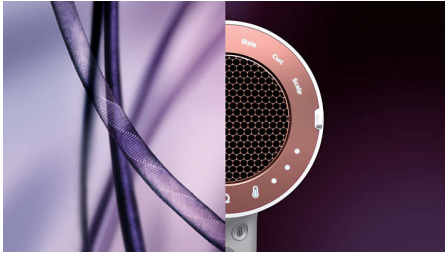
- Cares uniquely for your hair
- Ionic conditioning

SenselQ technology

- Personalised drying experience
- Adapts drying performance
- Powerful airflow
- Senses hair's temperature

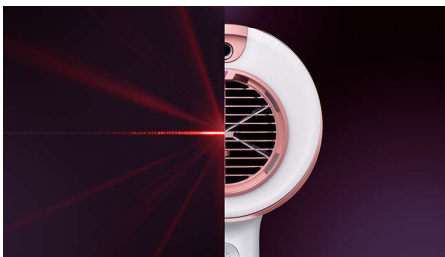
Highlights

Personalised



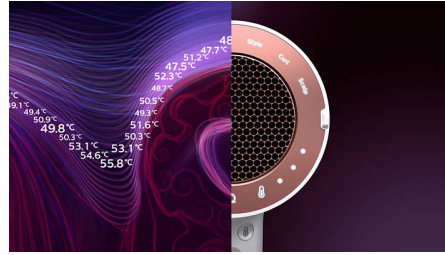
SenselQ technology for a personalised drying experience. SENSES. The dryer's digital infrared sensor continuously senses the temperature of your hair for a personalised protection. ADAPTS. The intelligent microprocessor analyses the data captured by the sensor and adjusts the temperature more than 12,000 times per drying session*** to prevent overheating. CARES. Our sensing and adapting technology protects the hair while drying, locking in up to 95%** of your hair's natural moisture.

Sensing



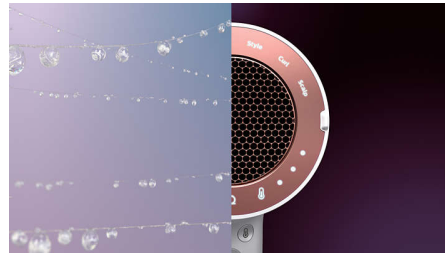
The digital infrared sensor continuously senses the hair's temperature to prevent overheating. While other hairdryers only measure the temperature of the airflow, the Philips dryer with SenselQ technology measures your hair's temperature. The sensor is highly precise and recognises even the smallest change, enabling personalised protection for your hair.

Adapting



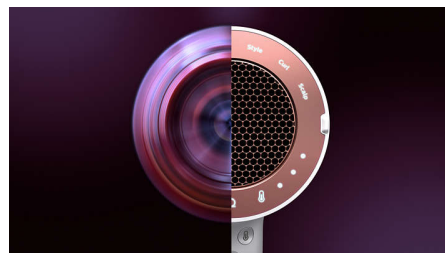
The intelligent microprocessor is the brain behind SenselQ. It analyses and adjusts the airflow temperature more than 12,000 times per drying session*** to give you our best performance and care that is exclusively tailored to your hair. SenselQ provides intelligent heat control to guard your hair in a unique way.

Caring



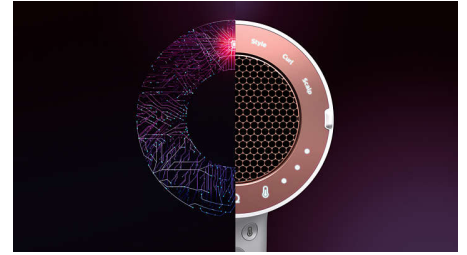
Give your hair the exclusive care it deserves. Lock in up to 95%** of your hair's natural moisture every time you dry, for healthy-looking hair full of shine.

Powerful



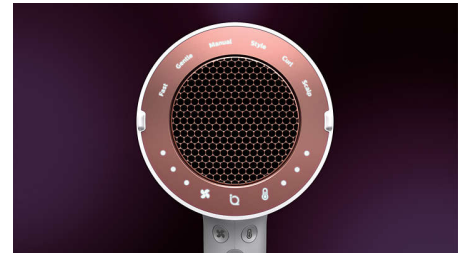
The innovatively engineered hair dryer is designed to deliver powerful airflow so you can now enjoy a 30% faster dry time*.

Smart



The smart digital programs create a drying experience tailored to your preferences by automatically selecting the right temperature and power of the airflow. Choose between Fast, Gentle, Manual, Style, Scalp and Curl. For a quick dry, select Fast mode. For extra care, select Gentle mode. Or choose Manual mode to pick your own heat/speed setting from three available levels. The Style, Curl or Scalp mode is automatically selected when the right attachment is connected.

Easy



Unique digital user interface, which can be operated with just your thumb. The user interface has LED light indication for easy navigation while you dry, and a separate cool shot button to easily set your style.

Styling



The 7 mm opening of the nozzle concentrates the airflow for precision styling. Ideal for brushing while drying and styling. The Style mode is automatically selected when the nozzle is attached. You can also use the nozzle in Dry, Gentle and Manual modes.

Specifications

Attachments

Nozzle: 7 mm
Curl diffuser
Scalp massager

Technical specifications

Voltage: 240 V
Cord length: 2 m
Wattage: 1800 W

Features

Storage hook
Cool Shot

Service

2-year worldwide guarantee

Caring technologies

Ionic Care: 2 x ions
SenseIQ technology

