

# PHILIPS

Cordless shaver with  
Wet and Dry use

Lady Shaver Series  
6000

Floating single foil

10-hr recharge

+7 accessory



BRL146/00



## A gentle shave for smooth skin

Experience smooth shave all over your body. The convenient and easy-to-use Philips Lady Shaver Series 6000 is suitable for sensitive areas and provides effortless smoothness while caring for your delicate skin

### A skin friendly shave

- Rounded trimmer tips for a skin-friendly shave
- Include skin stretcher cap

### Effortless smoothness

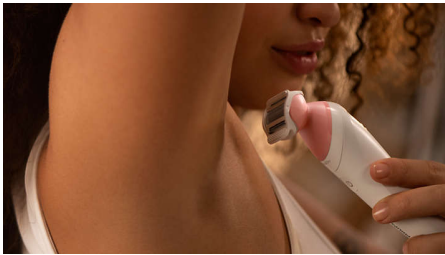
- A smooth and gentle shave
- Floating single foil for an even shave
- Exfoliation glove helps prevent ingrown hairs

### Easy to use and control

- Wet & Dry for use in bath or shower
- Up to 40 mins cordless usage
- Ergonomic handle for effortless control
- USB-A charging cable included Power adapter not included
- Includes bikini trimmer head and comb
- Storage pouch

# Highlights

## A smooth and gentle shave



Philips Lady Shaver Series 6000 is designed to be gentle and comfortable on the skin in different body areas\*. 80% of our consumers confirm no razor burns and redness\*\*. Achieve hair-free skin without compromise on skin comfort

## Rounded trimmer tips



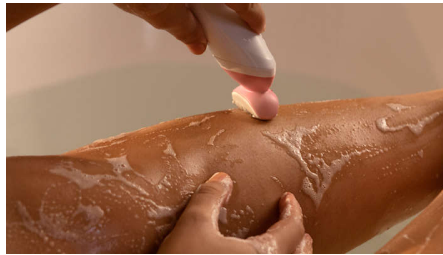
Rounded trimmer tips in front of and behind the shaving foil keep the shaver gliding smoothly over your skin. 78% of women agree that rounded trimmer tips prevent scratches\*\*\*

## Floating single foil



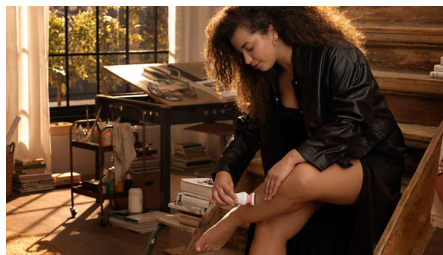
The floating foil glides naturally over your curves and contours, maintaining close contact with your skin for an even shave

## Wet & Dry use



For a gentle and comfortable use during your shower or bath routine with anti-slip grip for optimal Wet & Dry use.

## Cordless use



With rechargeable battery, Philips Lady Shaver Series 6000 provides up to 40 mins cordless use

## Ergonomic S-shaped handle



The ergonomic S-shaped handle is easy to steer for maximum control and better reach with natural and precise movements, all over your body

## USB-A charging



At Philips, we drive sustainability in all aspects of product creation. Our ambition is to reduce waste and minimize the number of USB

adaptors we put in the market. Should you need an adaptor, please contact us via Consumer Care Center: [www.philips.com/support](http://www.philips.com/support)

## Skin stretcher cap



Skin stretcher cap tightens skin while shaving for a gentler experience

## Bikini trimmer head and comb



It includes a trimming head and bikini comb to trim and shape delicate areas for more convenience.

## Exfoliation glove



The use of the exfoliation glove helps prevent ingrown hairs in between shaving

# Specifications

## Accessories

Cleaning brush  
Pouch: Basic pouch  
Trimming comb  
Soft glide cap  
Skin stretcher cap  
Exfoliation glove  
Bikini trimmer head  
Bikini trimmer comb

## Power

Battery Type: NiMH  
Charging: Rechargeable, 10 hours charging time  
Usage time: up to 40 minutes

## Technical specifications

Voltage: 5V/7.5 W  
Material foil: Nickel  
Number of shaving foils: 1  
USB-A cable  
Speed settings: 1

## Ease of use

Handle: Ergonomic  
Cordless  
Wet and dry use  
Rechargeable

## Performance

Shaving head: Single foil shaver  
Skin care features: Rounded trimmer tips

