

Philips 500 Series  
Dry Iron

**Non-stick Soleplate**

350 W Power  
1.6 m cord length

**DST0510/70**



## Compact and effective

Smooth glide to iron with ease

500 Series is the new Philips dry iron with the smallest size and lightest weight. Its ultra compact design enables easy and smooth ironing, for effective results with less efforts.

### **Easy gliding on all fabrics**

- Non-stick soleplate coating

### **Ultra compact and effective**

- Slim tip soleplate reaches easily in tricky areas
- Comfortable handle with texturing for easy grip
- Cord winder for easy cord storage
- The light weight iron helps to iron with less effort

### **Full Control**

- Easy temperature control
- Temperature light indicates when the iron is hot enough

### **Safe and Hygienic**

- Remove 99.99% bacteria\* in 10 seconds

# PHILIPS

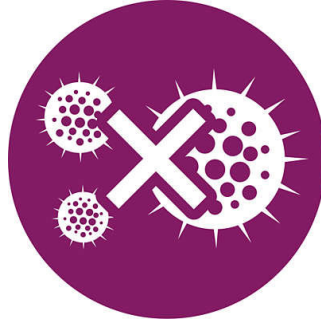
# Highlights

## Easy temperature control



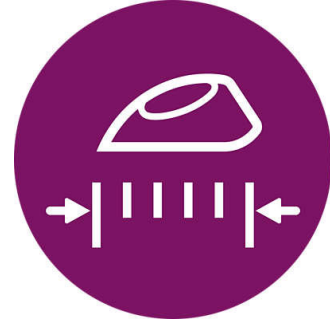
An elevated temperature control is easy to operate and precise. You will always have the right temperature for your garment.

## Kills 99.99% of bacteria\*



500 Series removes 99.99% bacteria\* from your garments in as little as 10 seconds

## Easy storage



The cord can be wrapped around the heel rest, so that the appliance is easy to store.

## Non-stick soleplate



**Non-stick**

The soleplate of your Philips iron is coated with a special non-stick layer for good gliding performance on all fabrics.

## Temperature light indicator



Light indicator goes on when the iron is heating up and switched off when the soleplate temperature has reached the set level.

## Light weight



The light-weight iron combined with the non-stick coating helps to glide easily and removes wrinkles faster.

## Slim tip soleplate



The slim tip soleplate designed to tackle hard-to-reach areas like collars and in between buttons with ease.

## Comfortable handle



The texturing on the handle of the iron ensures a comfortable and ergonomic grip, so that your hand fits well and does not slip during ironing.

# Specifications

## Technical specifications

- Power: 350 W
- Weight of iron: 0.7 kg
- Voltage: 220 V
- Product dimensions: 21.9 x 10.1 x 11.4 cm

## Easy to use

- Ultra light and comfortable
- Power cord length: 1.6 m
- Reaching tricky areas: Button groove

- Long lasting cord
- Comfortable handle
- Easy cord winding

## Smooth gliding

- Soleplate: Non-stick soleplate

## Full control

- Easy temperature control
- Temperature light-indicator



Issue date 2023-10-21

Version: 7.7.1

EAN: 87 20389 01405 5

© 2023 Koninklijke Philips N.V.  
All Rights reserved.

Specifications are subject to change without notice.  
Trademarks are the property of Koninklijke Philips N.V.  
or their respective owners.

[www.philips.com](http://www.philips.com)

\* Tested externally on cotton fabric on E.Coli, S. Aureus and C. Albicans, 10 sec. application time.