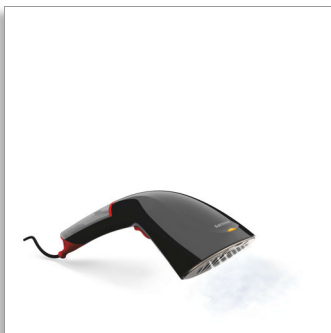




Philips Steam&Go 2-in-1
Handheld garment steamer

1200 W

Heated plate
Automatic continuous steam
Brush and storage pouch



GC332/86

Quick crease removal with the power of steam

Ideal for difficult to iron clothes and travel

This handheld garment steamer is ideal for last moment touch-ups and difficult to iron clothes. Easy to use and quick, it is the perfect addition to your iron. This model has a heated plate and 2-in-1 function enabling horizontal steaming.

Easy to use

- Ergonomic design for handheld operation
- No ironing board needed
- Detachable water tank for easier filling
- Safe to use on delicate fabrics, like silk
- Exclusive storage bag for easy storage
- Fast heat up time

Quick crease removal

- Automatic continuous steam delivered by electric pump
- Brush accessory for a smooth finish
- SmartFlow heated steam plate for great results
- 2-in-1: vertical and horizontal steaming function

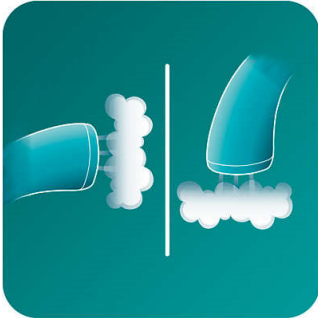
Refreshes clothes without washing or dry cleaning

- Removes cigarette, food and body odors
- Steam kills up to 99.9% of bacteria*

PHILIPS

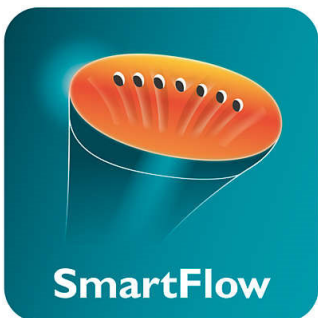
Highlights

2-in-1 steaming function



2-in-1 vertical and horizontal steaming function allows you to achieve even better results with your garment steamer. Steam your clothes vertically without using an ironing board, or give them a really crisp touch by steaming horizontally on any straight surface around you. Due to its unique internal design this Steam&Go 2-in-1 will generate powerful continuous steam even in horizontal position, so now you can also steam your soft furniture and bed linen.

SmartFlow heated plate



SmartFlow technology ensures great ironing results as the optimized steam flow heats up the steam plate. This keeps the steam plate at an optimal, safe temperature for all fabrics while effectively preventing wet spots. It features a coating that enables good gliding and corrosion resistance.

Automatic continuous steam



Electric pump provides continuous steam for easy and quick crease removal.

Safe on all garments



The steamer is safe to use on all fabrics. It is a great solution for delicate fabrics like silk.

No ironing board needed



By using the steamer you do not need an ironing board anymore, which makes ironing hassle-free.

Detachable water tank



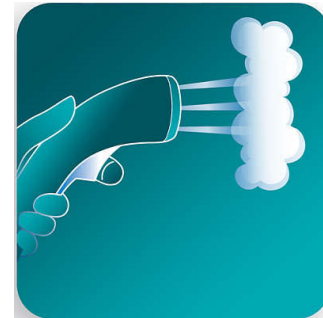
Detachable water tank for easier filling.

Fast heat up time



The steamer is ready to use within seconds.

Ergonomic design



The handheld steamer is light and comfortable to use thanks to the ergonomic and compact design. Just press the trigger and quickly remove creases with continuous steam.

Specifications

Accessories

- Brush

Technical specifications

- Voltage: 220-240 V

Consumer Trade Item

- Height: 15
- Width: 38
- Length: 12
- Net Weight: .814
- Gross Weight: .967
- GTIN: 8710103743996
- Country of origin: CN
- Harmonized system code: 851679

Outer Carton

- Height: 32.8
- Width: 38.4
- Length: 40

- Gross Weight: 6.519
- GTIN: 18710103743993

Weight and dimensions

- Weight of iron: 0.72 kg
- Packaging dimensions (WxHxL): 38 x 12 x 15 cm
- Product dimensions (WxHxL): 34.7 x 12.5 x 9.5 cm

Easy to use

- Heat up time: < 1 minute(s)
- Safe for all fabrics: Even for delicates like silks
- Water tank capacity: 60 ml
- Refill any time
- Power cord length: 2 m

Fast & powerful crease removal

- Continuous steam output: 24 g/min
- Power: 1200 W
- Vertical steaming
- SmartFlow steam plate



Issue date 2023-08-22

Version: 1.1.1

EAN: 87 10103 74399 6

© 2023 Koninklijke Philips N.V.
All Rights reserved.

Specifications are subject to change without notice.
Trademarks are the property of Koninklijke Philips N.V.
or their respective owners.

www.philips.com

* * Tested by external body for bacteria types Escherichia coli 8099,
Staphylococcus aureus ATCC 6538, Candida albicans ATCC
10231 with 8 minutes steaming time.