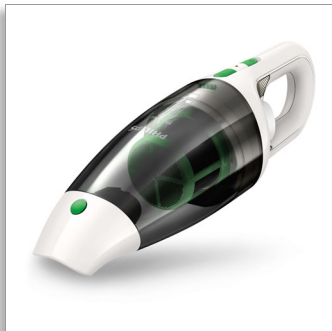




Philips MiniVac  
Handheld vacuum cleaner

10.8V battery (Lithium)

Bagless Cyclonic  
Crevice and brush tool  
Eco



FC6148/01

## Greener every day

Save up to 70% energy with efficient charging\*

The Philips MiniVac EnergyCare 10.8 V vacuum cleaner has lightweight and powerful, long-lasting Lithium-Ion battery technology. The efficient charging system stops using power when the batteries full, so no energy is wasted.

### Save energy, not power

- Charging system switches off when batteries are full

### Easy to use

- Looped handle ensure optimum grip
- One-step click-off nozzle for easy emptying

### Easily cleans delicate surfaces and narrow spaces

- Charging stand with brush tool and crevice tool

### Optimal filtration

- 2-stage bagless cyclonic airflow for optimal filtration

### High power guaranteed

- Longer-lasting lightweight Lithium-Ion batteries

# PHILIPS

# Highlights

## Longer-lasting lightweight Lithium-Ion batteries



The powerful Lithium-Ion (Li-Ion) batteries of the Philips Mini Vac have longer-lasting power versus standard Nickel-Cadmium (NiCd) batteries. Li-Ion batteries are also very lightweight, giving you a more enjoyable cleaning experience.

## 2-stage bagless cyclonic



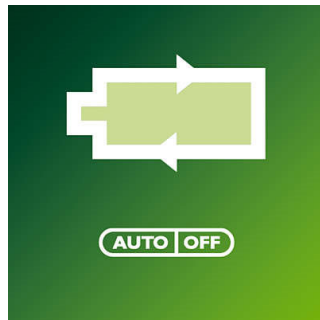
The bagless cyclonic airflow keeps the dirt inside rotating to ensure optimal, high suction power and lasting cleaning performance. Its 2-stage filtration system ensures that, once inside, the dirt cannot escape. The first filter blocks most dirt, while the second filter traps the finer dust particles.

## Brush tool and crevice tool



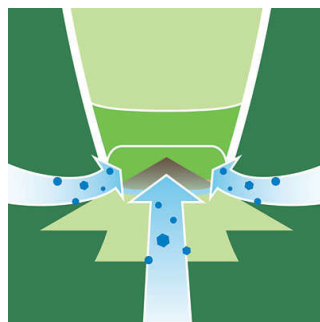
The charging stand of the MiniVac holds both a brush tool and a crevice tool. The brush tool makes sure you don't damage delicate surfaces when cleaning, while the crevice tool gives you access to hard to reach places.

## System switches off when full



The efficient charging system automatically shuts off when the batteries are fully charged. Therefore it stops using power and it saves energy. Other charging system normally keep charging even when batteries are full and therefore waste energy.

## Aerodynamic nozzle design



The aerodynamic nozzle design of the Philips MiniVac is created to ensure an optimum dust

pick-up of even the most fine dust particles. The ergonomic shape of the nozzle helps you to clean even the most hard-to-reach areas.

## Comfortable grip



The Philips Mini Vac has a looped handle that ensures optimum grip. You can grab the Mini Vac in any way you like.

## One-step click-off nozzle



The Philips MiniVac vacuum cleaner is easy and quick to empty and hygienic to clean. The Philips MiniVac has a nozzle that easily clicks off in just one step, so you can empty the Mini Vac without touching the dirt.

# Specifications

## Nozzles and accessories

- Other accessories: Charging base

## Design

- Design features: Translucent dust chamber
- Color: White and green

## Weight and dimensions

- Dimensions of packaging (LxWxH): 460 x 160 x 160 mm
- Appliances per A-box: 6
- Weight of product: 0.8 kg
- Dimensions of A-box (LxWxH): 508 x 335 x 490 mm

## Performance

- Battery type: Li-Ion

- Battery voltage: 10.8 V
- Charging time: 8 hour(s)
- Runtime: 9 minute(s)
- Vacuum (max): 4.3 kPa
- Input power (max): 100 W
- Suction power (max): 22 W
- Noise level (Lc IEC): 81 dB
- Airflow (max): 950 l/min

## Filtration

- Dust capacity: 0.5 L
- Filter system: 2-stage cyclonic action

## Usability

- Special features: Charging indication, Soft touch handle



Issue date 2023-07-19

Version: 1.1.2

EAN: 87 10103 48981 8

© 2023 Koninklijke Philips N.V.  
All Rights reserved.

Specifications are subject to change without notice.  
Trademarks are the property of Koninklijke Philips N.V.  
or their respective owners.

[www.philips.com](http://www.philips.com)

\* compared to Philips predecessor model FC6050. Internal test 2007  
Philips Consumer Lifestyle.