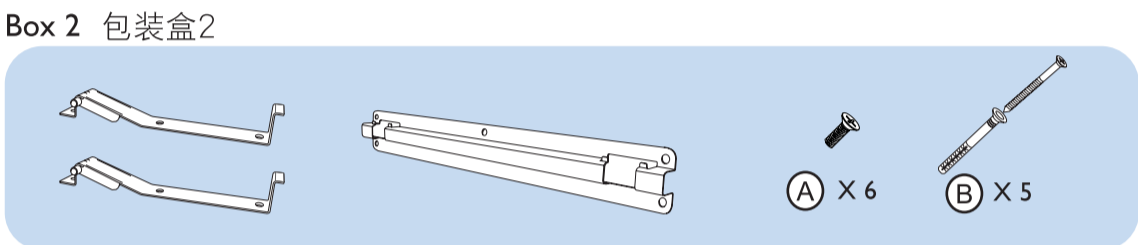
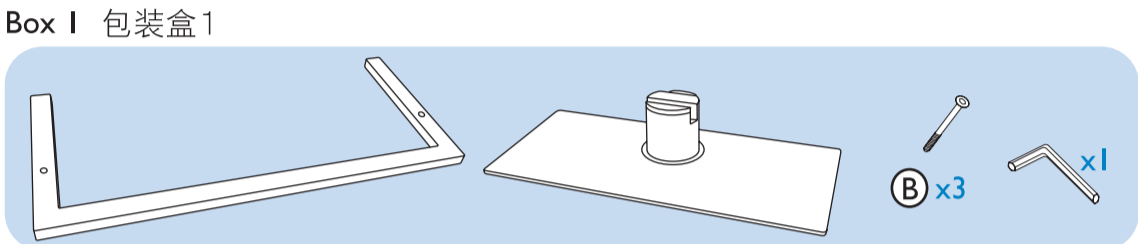
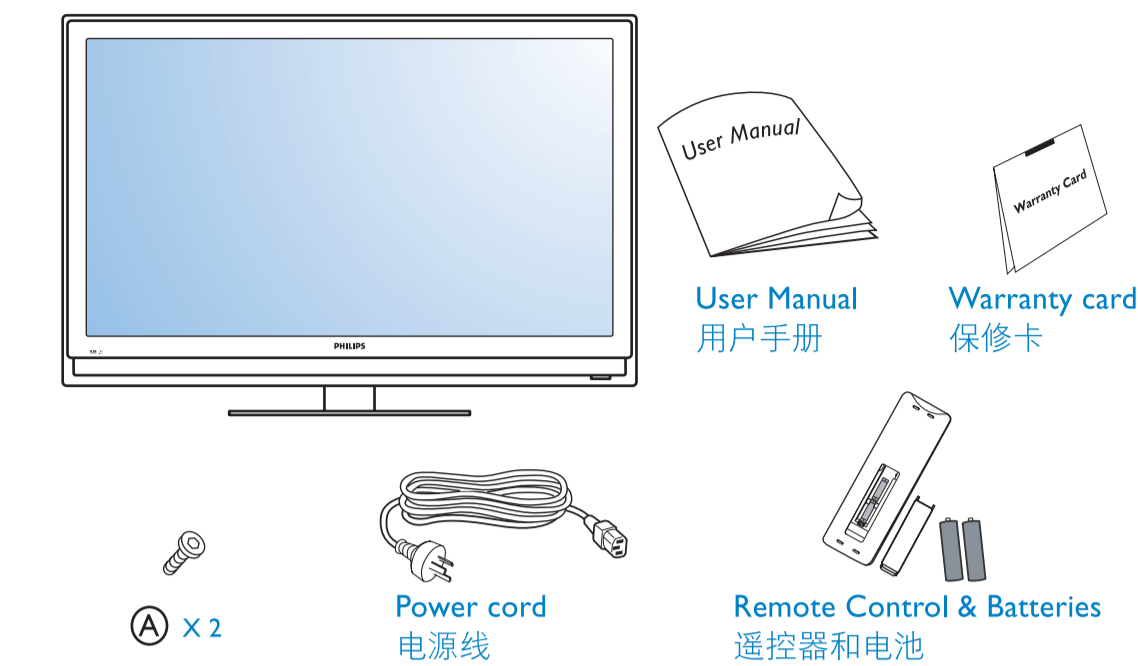
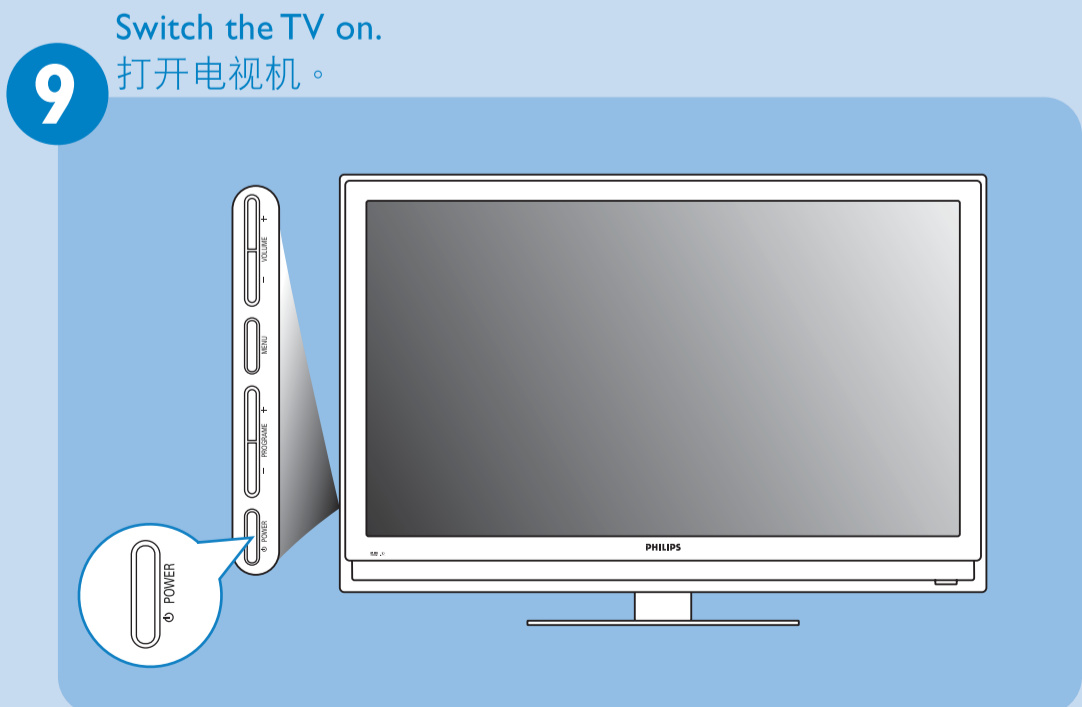
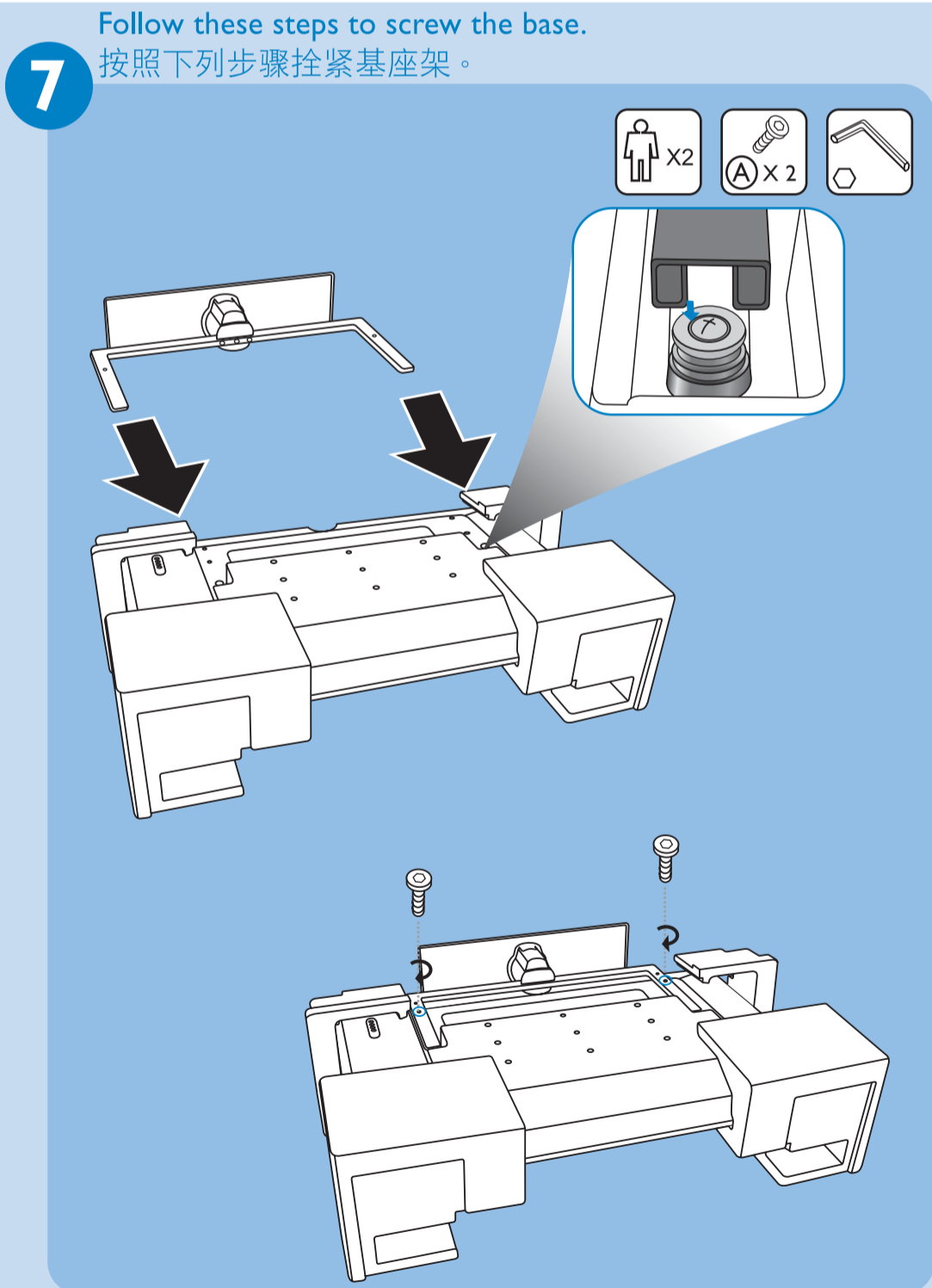
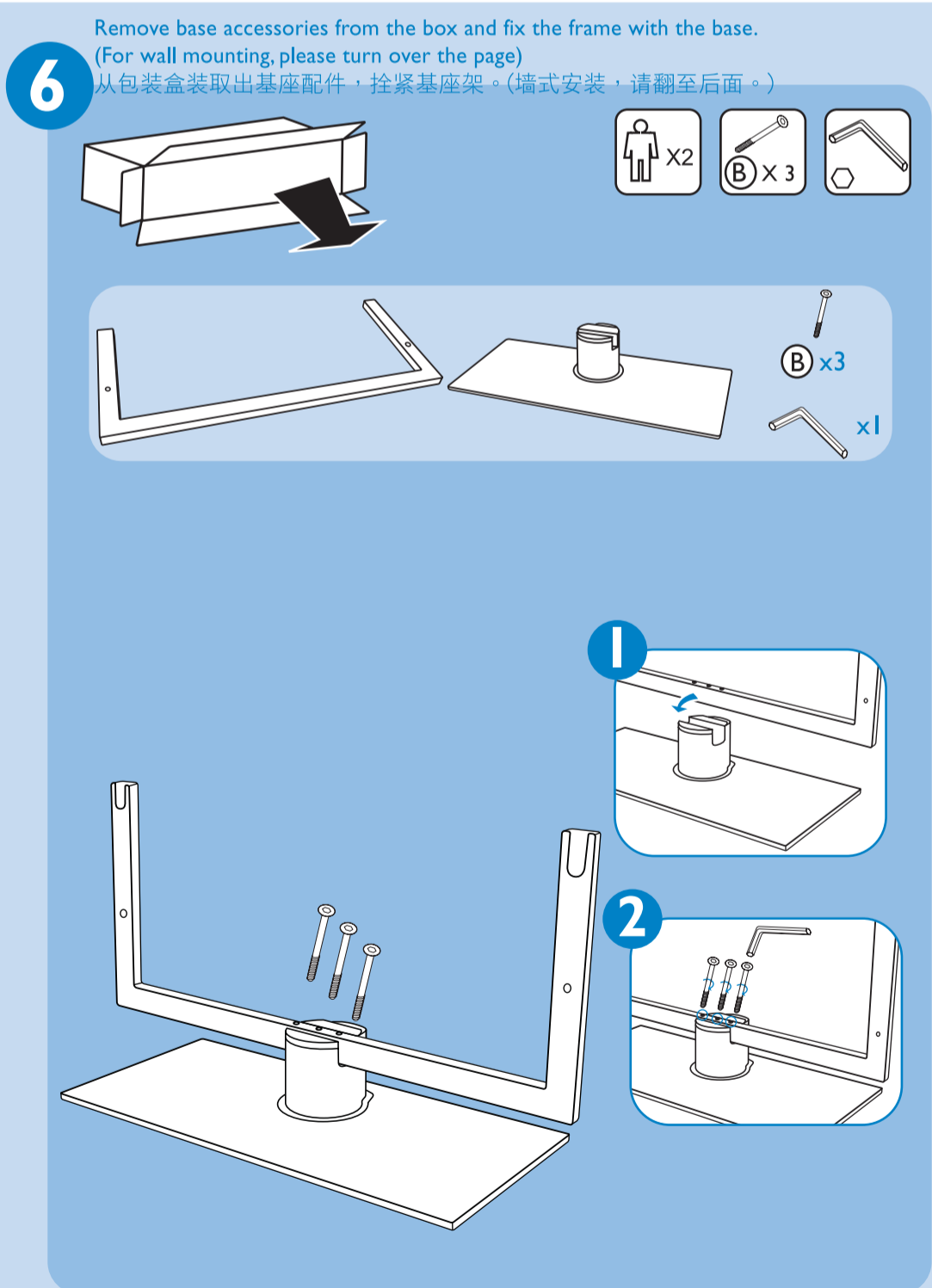
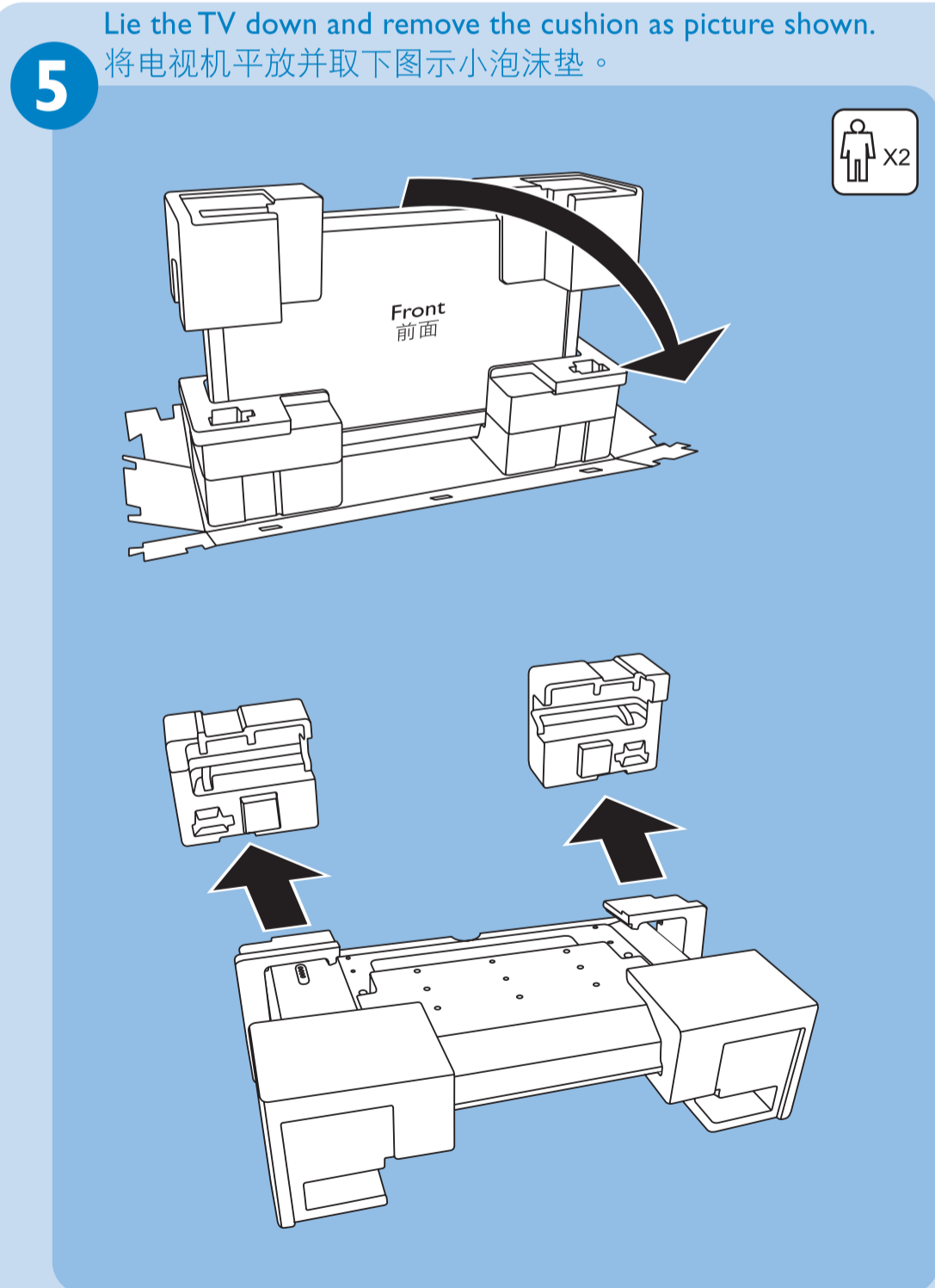
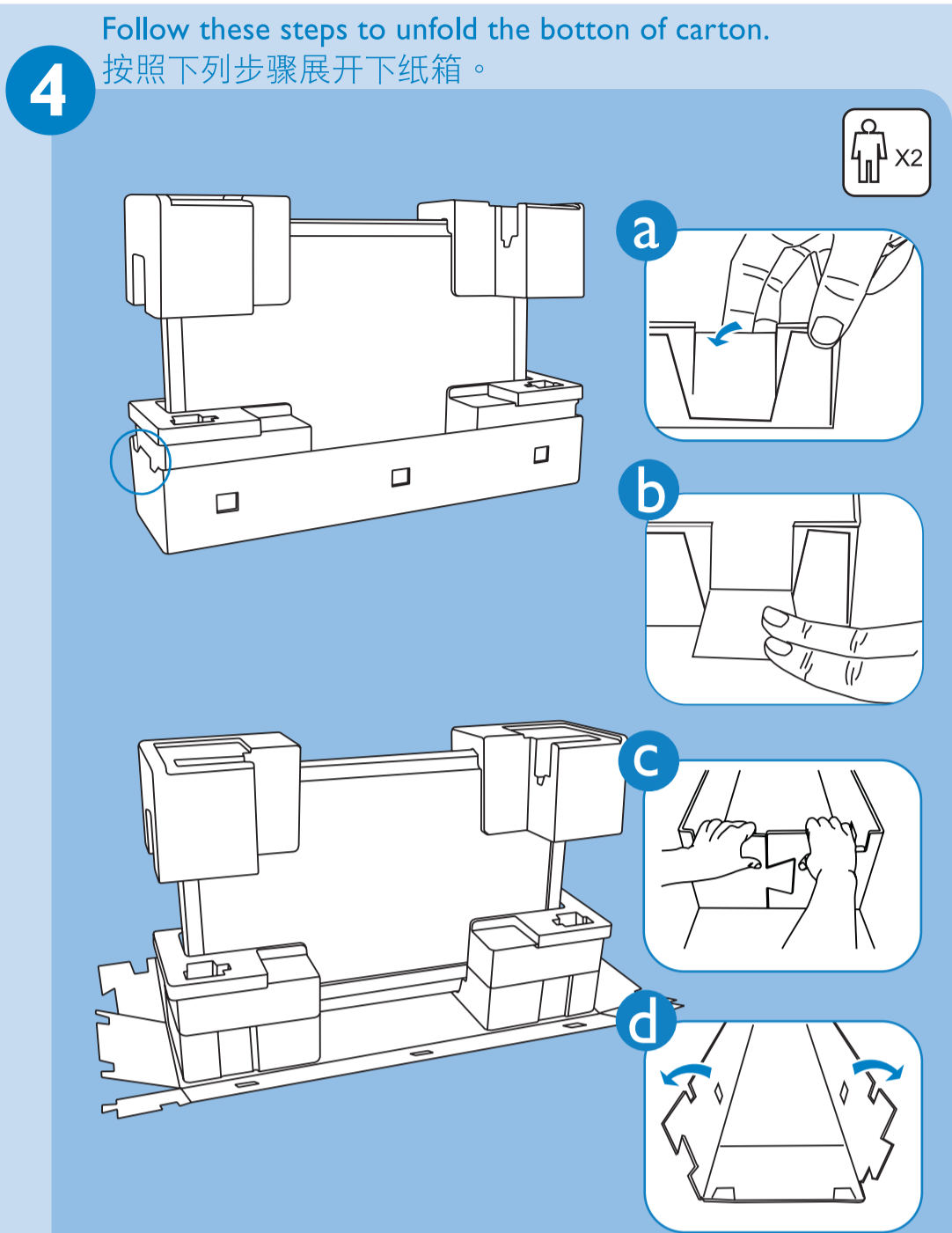
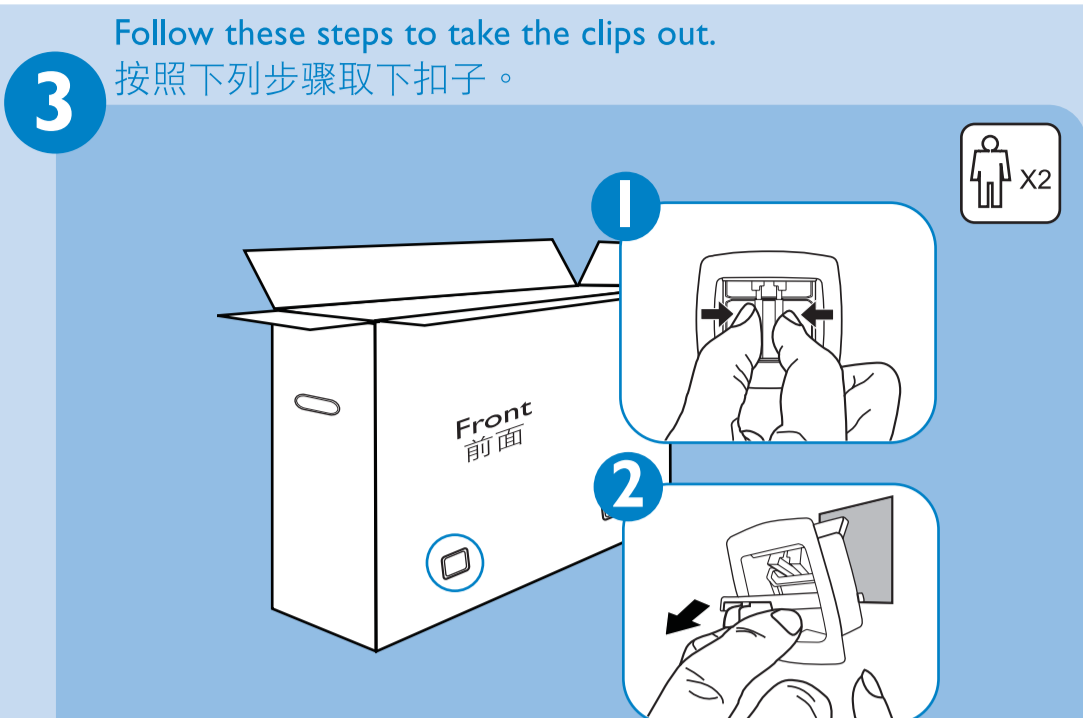
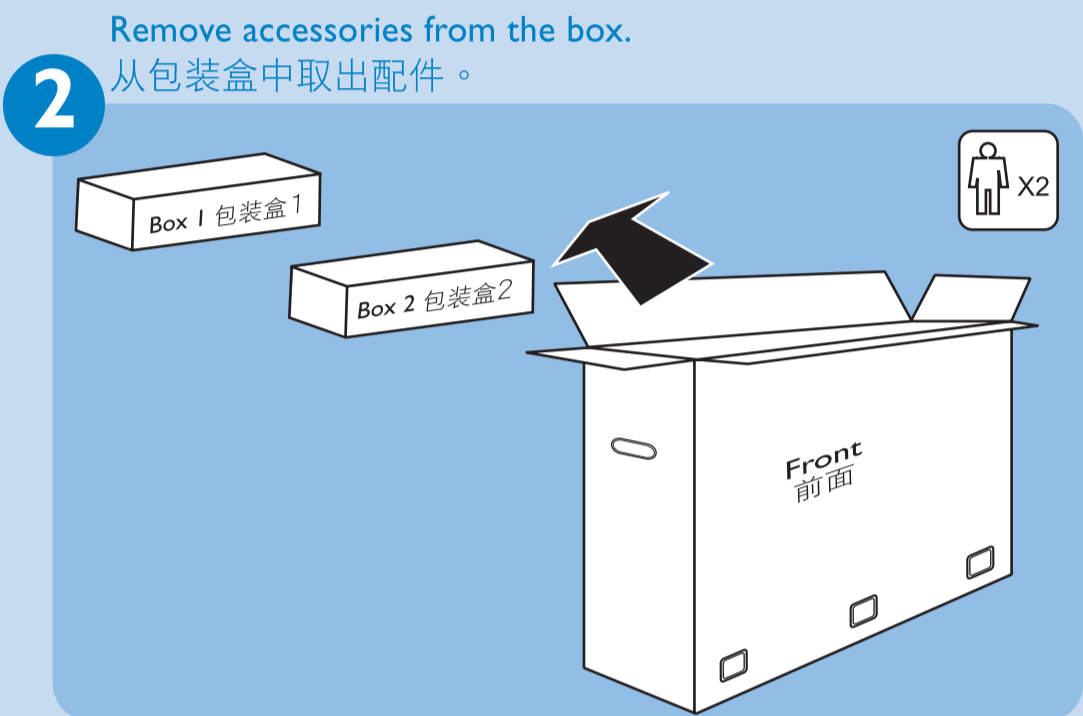
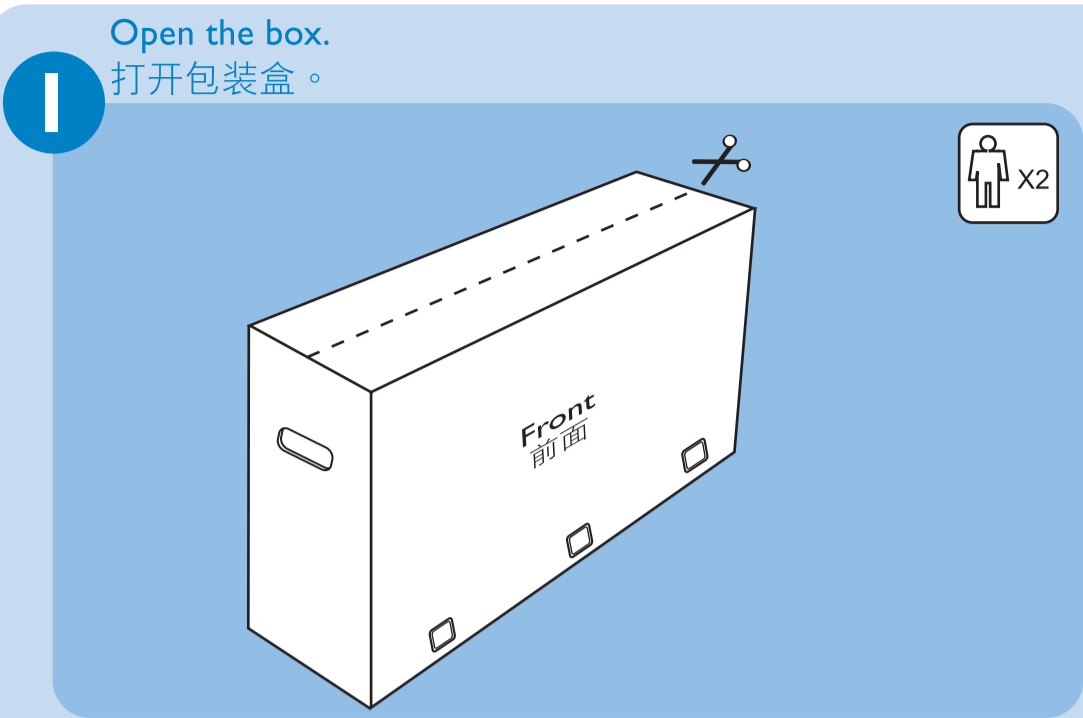


What's in the box 包装内的物品清单



What else you'll need 您所需要的物品



Rear and side connectors.
后面和侧面连接插头

Place the batteries in the remote control.
将电池放入遥控器中。

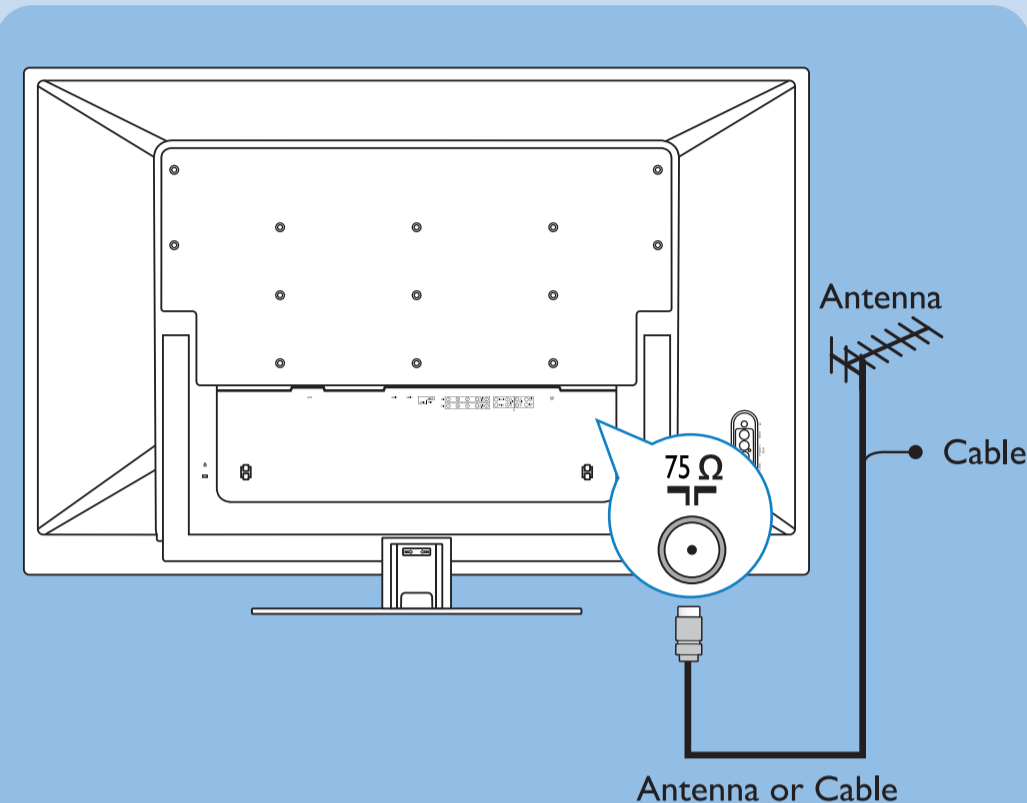
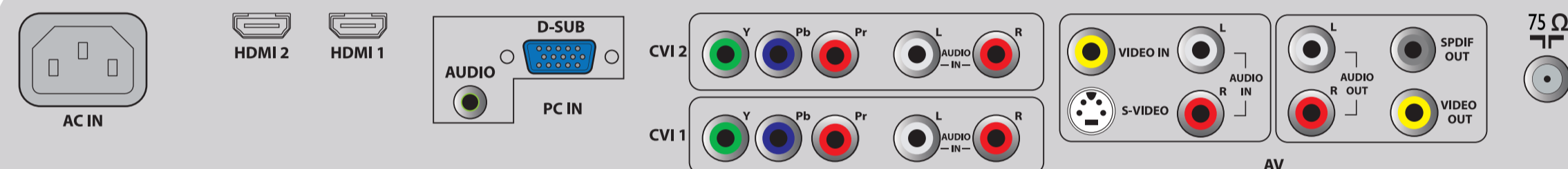
Auto Store 自动搜寻

Immediately after unpacking and plugging in your new television, run the auto store function to set up the TV for the antenna or cable channels available in your area. If you do not run the auto store function to set up the channels, your television may not operate properly. (See User Manual page 10.)

在打开包装并连通这台新电视的电源后，立即进行自动搜寻功能设置电视，使其记忆您所在的地区可用的天线或有线电视频道。如果不进行自动搜寻功能设置频道，电视可能无法正常工作。(参见用户手册第10页。)

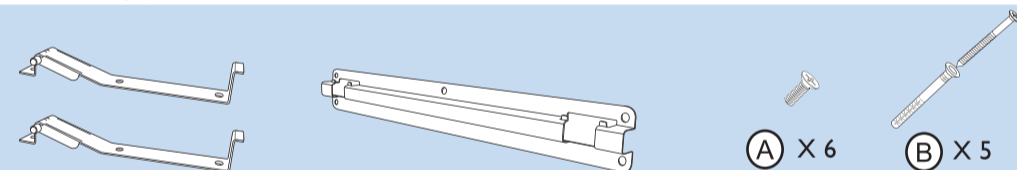
Welcome 欢迎

Read me 阅读我

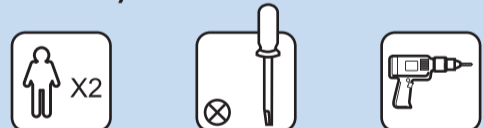


Wall mounting 墙式安装

Box 2 包装盒2



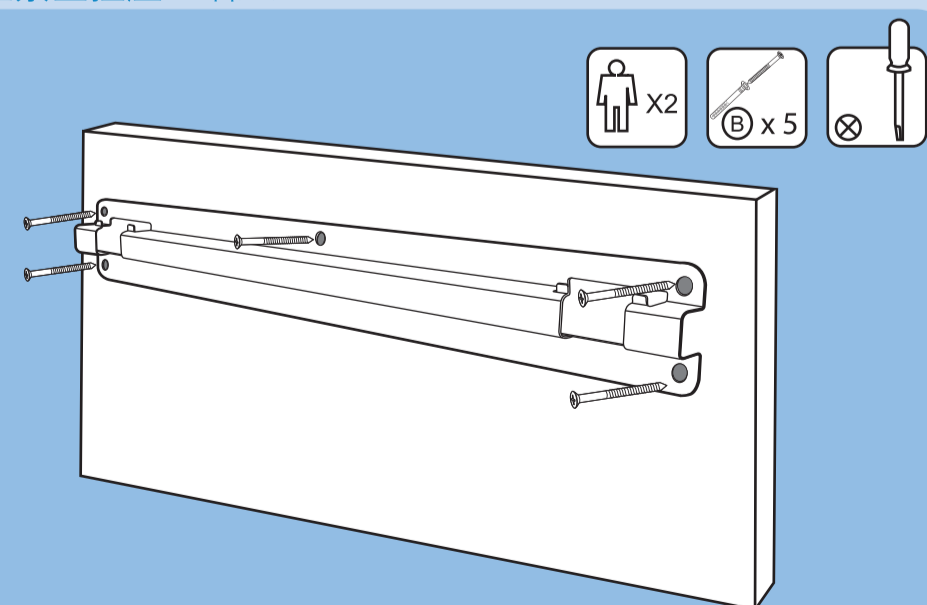
What else you'll need 您所需要的物品



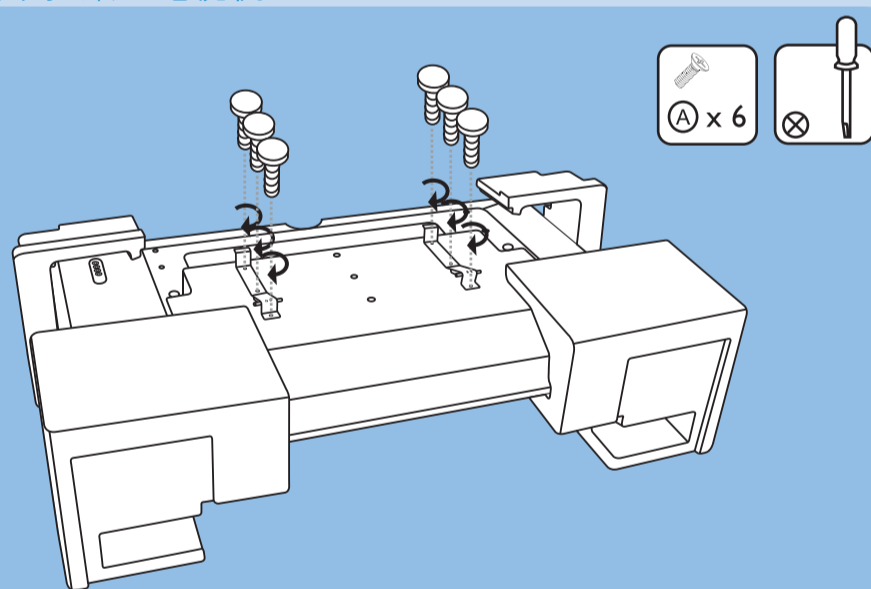
When installing the LCDTV on the wall, please consult a professional technician for proper installing. The manufacture accepts no liability for installations not performed by professional technician.

将液晶电视挂在墙上时，请咨询专业技术人员以了解正确的安装方式。制造商对于非专业人士进行的安装不承担任何责任。

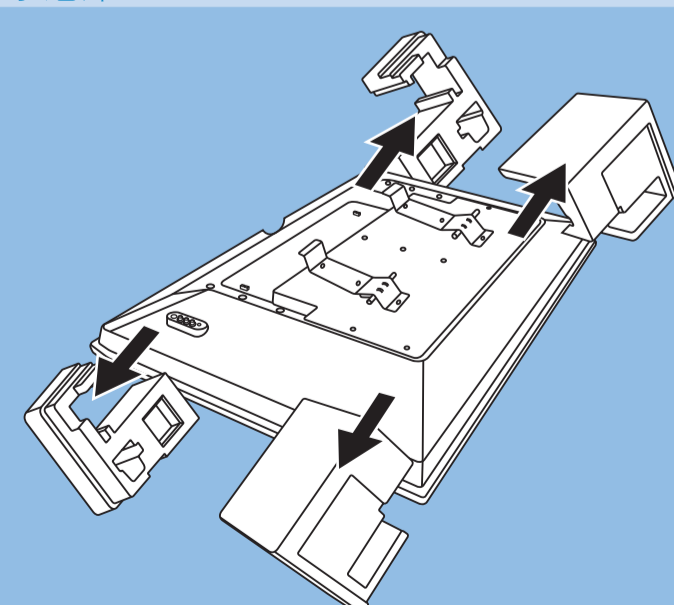
3 Screw the holder on the wall
拴紧壁挂座至墙上



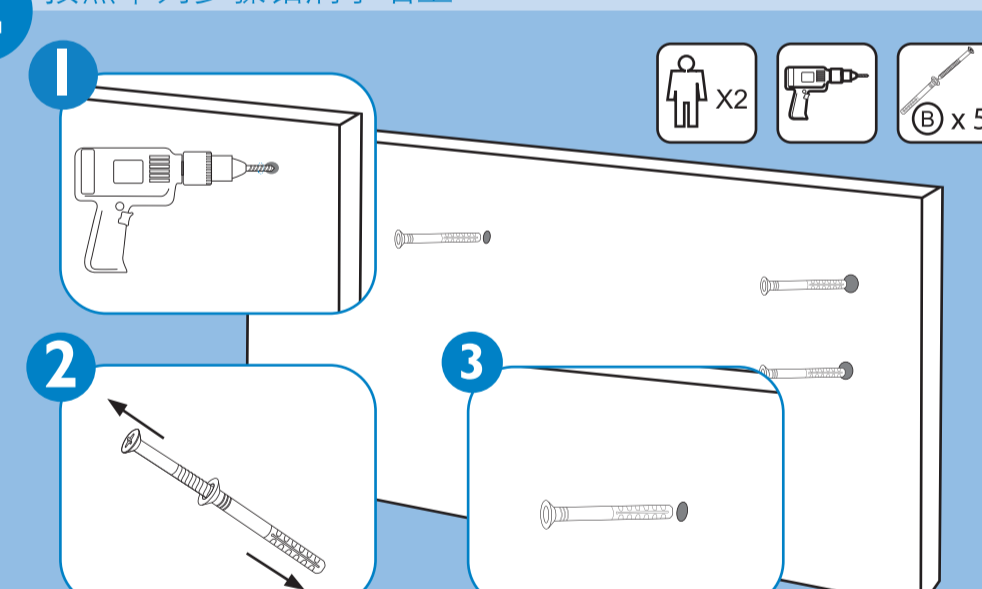
1 Screw the brackets to the TV
拴紧吊扣架至电视机



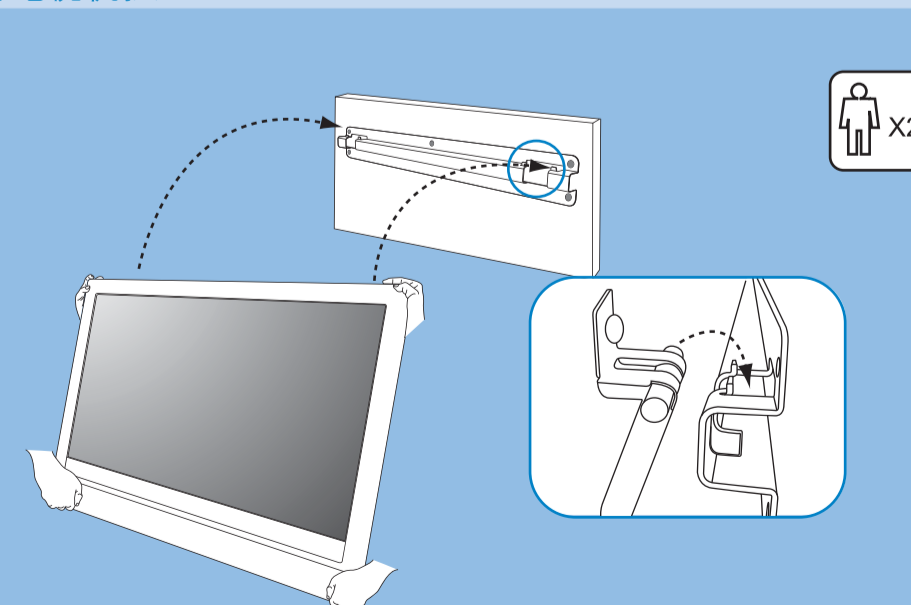
4 Remove the cushion
取下小泡沫垫



2 Follow these steps to drill holes on the wall
按照下列步骤钻洞于墙上



5 Hang the TV up
将电视机挂上



The manufacture accepts no liability for damage of improper installation. Any question, please consult your dealer or service center. 生产商对不当安装所造成的损失将不负任何责任。如有疑问，请与销售商或服务中心联系。

PA11100813 1C



Specifications are subject to change without notice