

Register your product and get support at
www.philips.com/welcome

3000 series

Quick start guide

PHILIPS

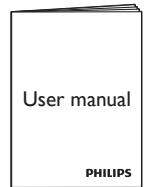
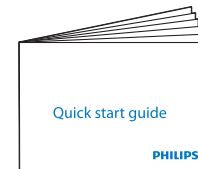
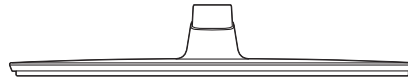
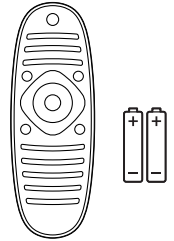
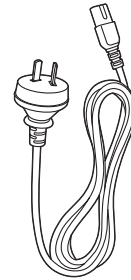
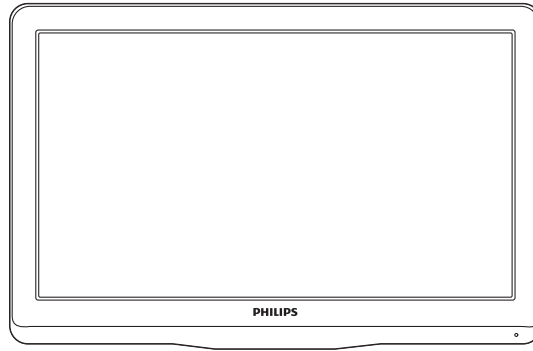


EN Before using your product, read all accompanying safety information

ES Antes de usar el producto, lea la información de seguridad adjunta

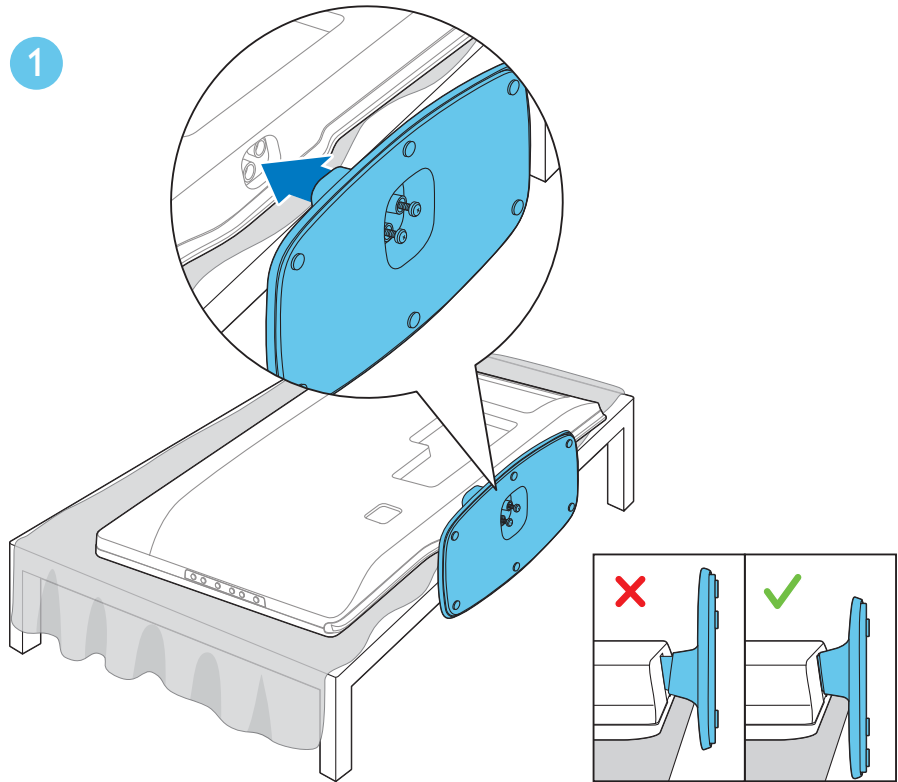


EN What's in the box
ES Contenido de la caja

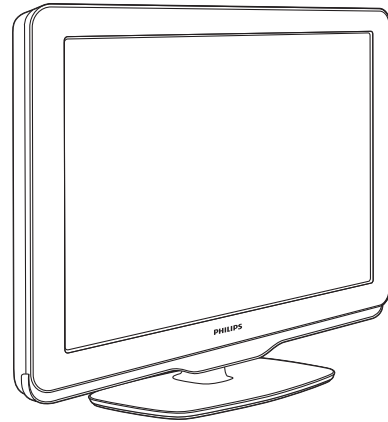
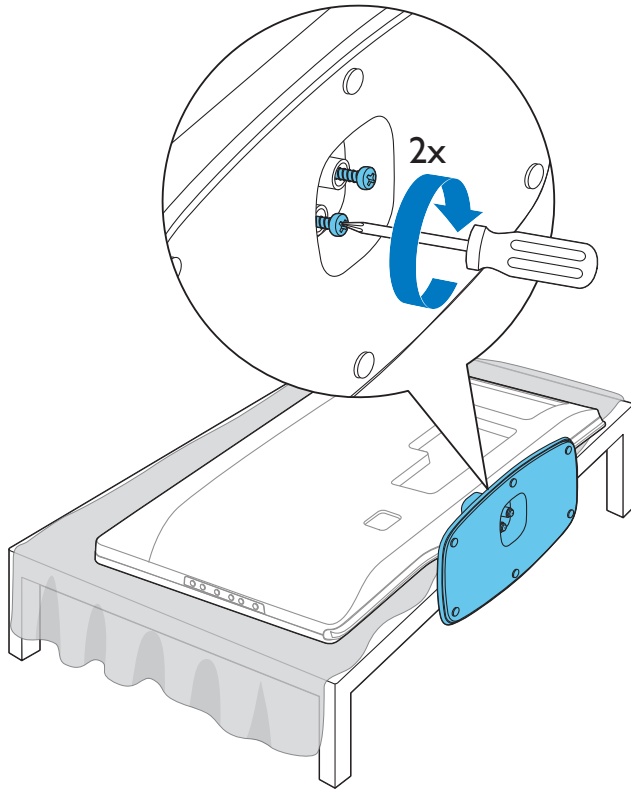




EN Mount the stand
ES Monte el soporte

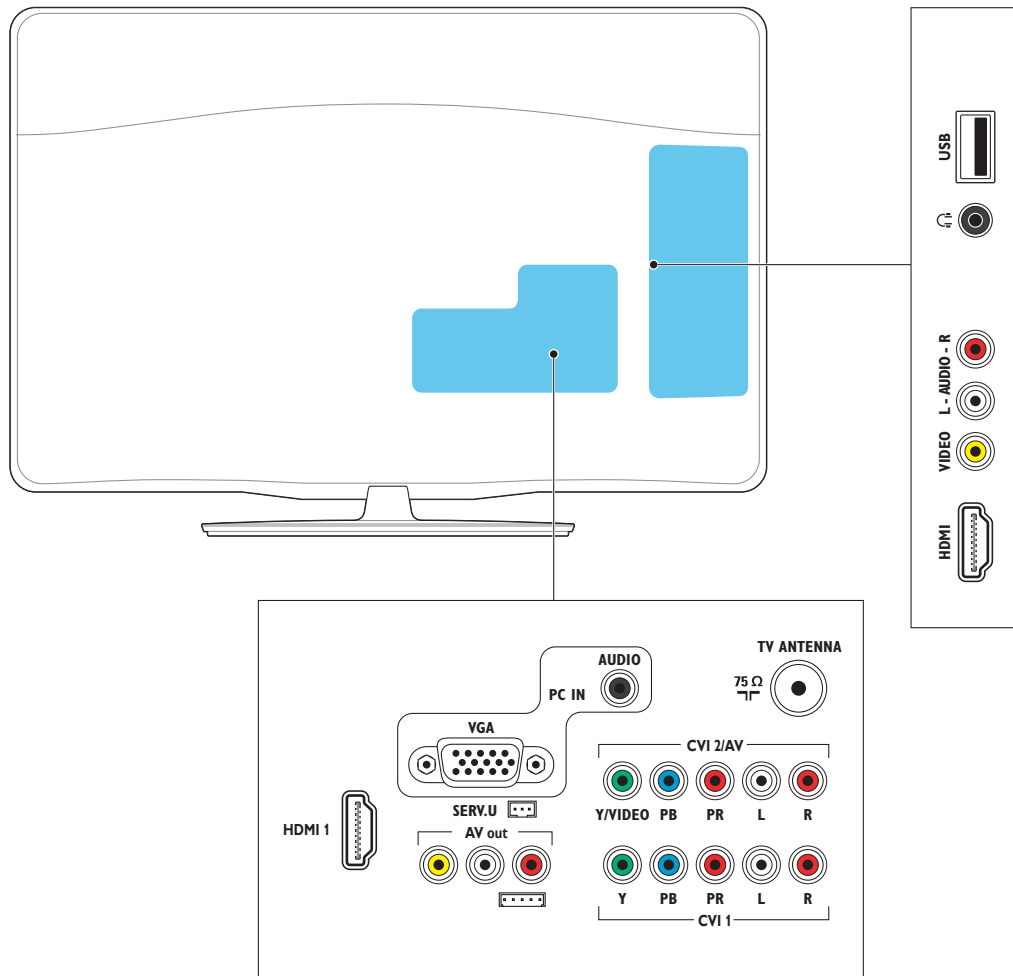


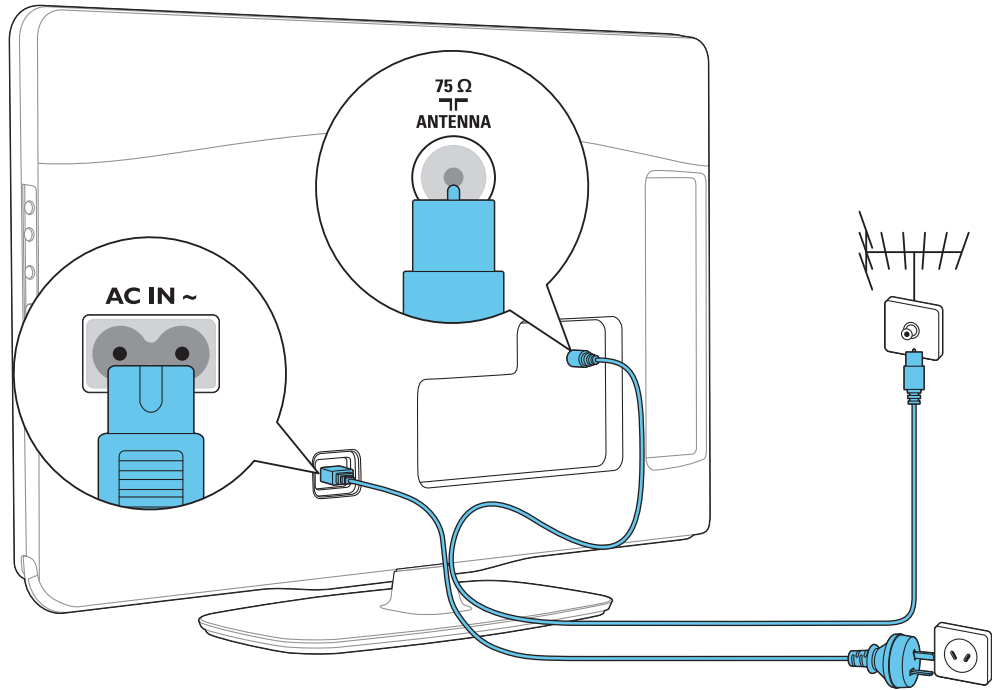
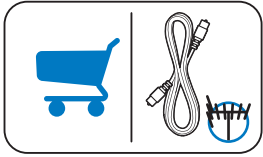
2

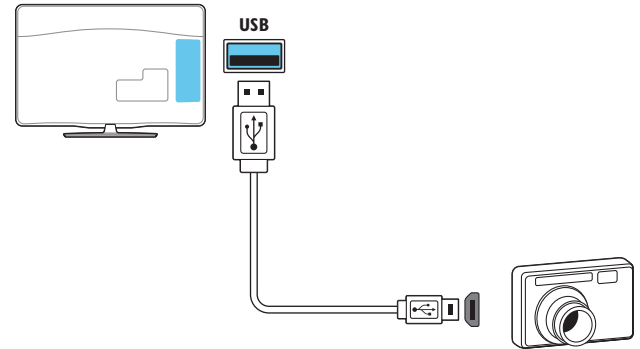
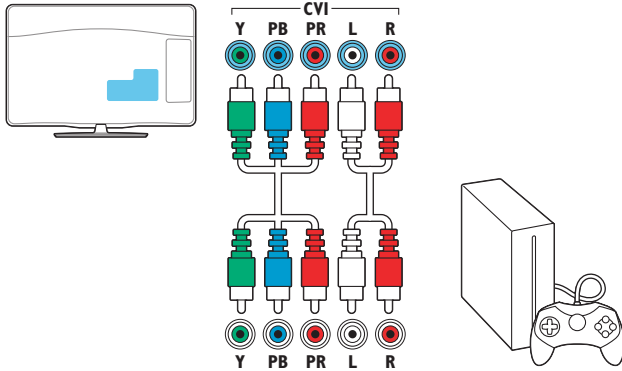
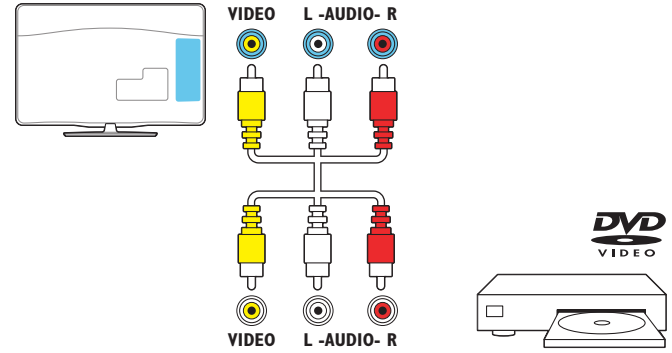
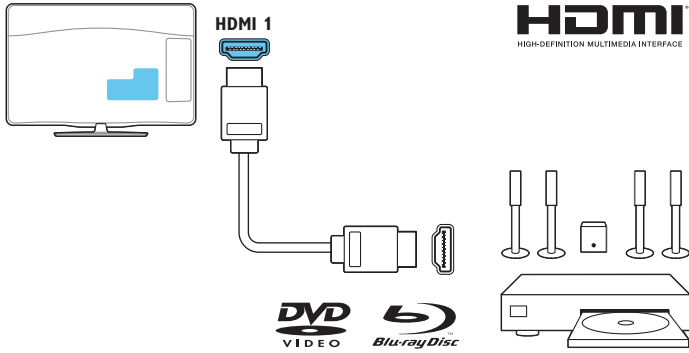


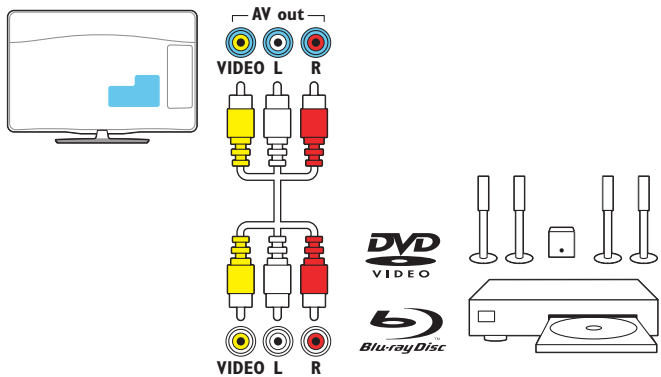
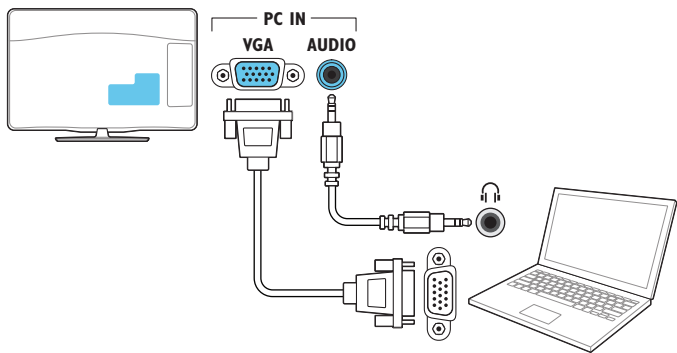
2

EN Connect
ES Conexión





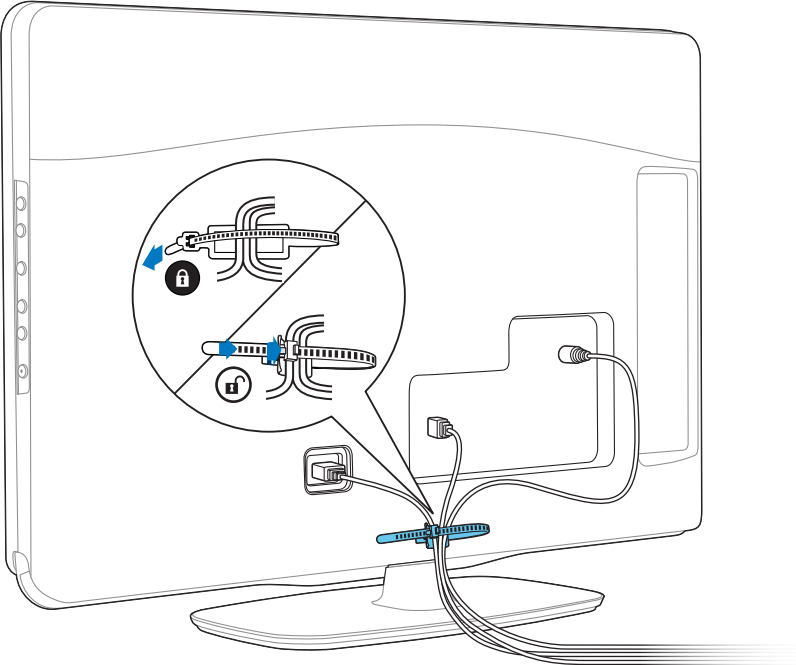




3

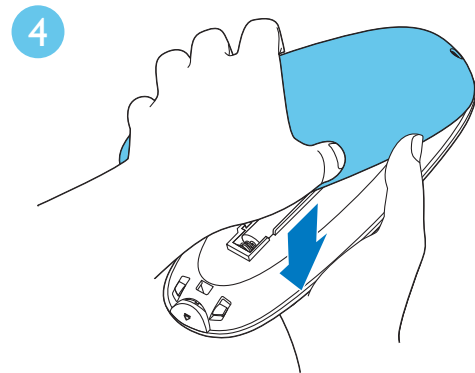
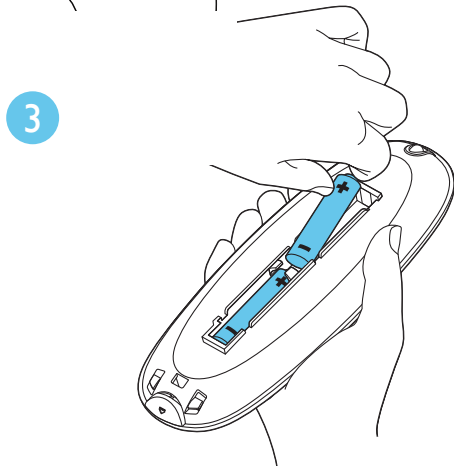
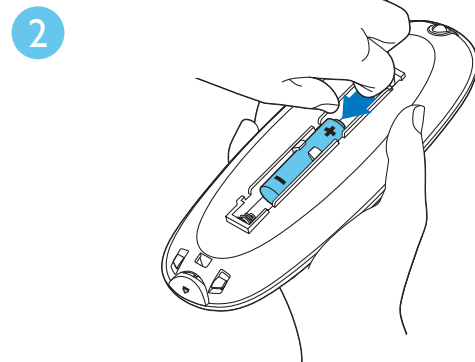
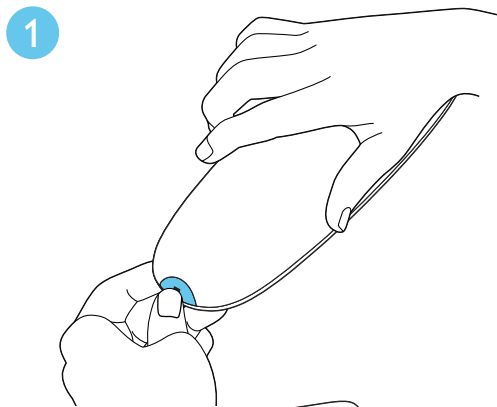
EN Manage cables

ES Ordene los cables



4

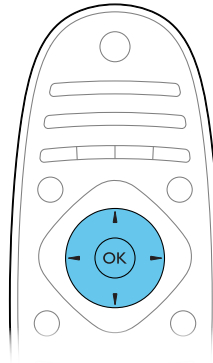
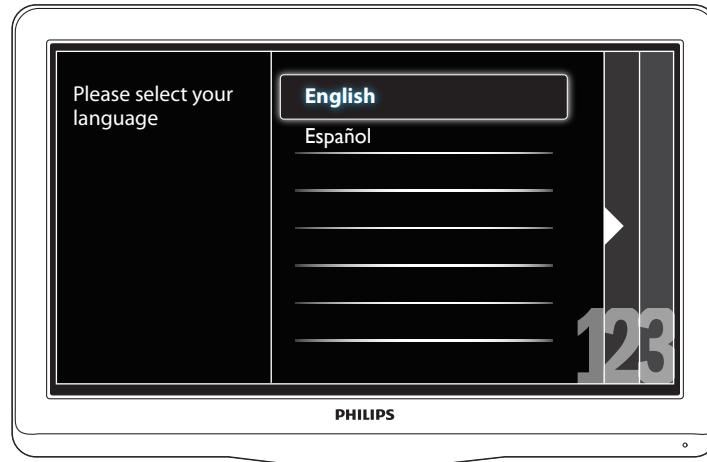
EN Insert batteries
ES Inserte las baterías



5

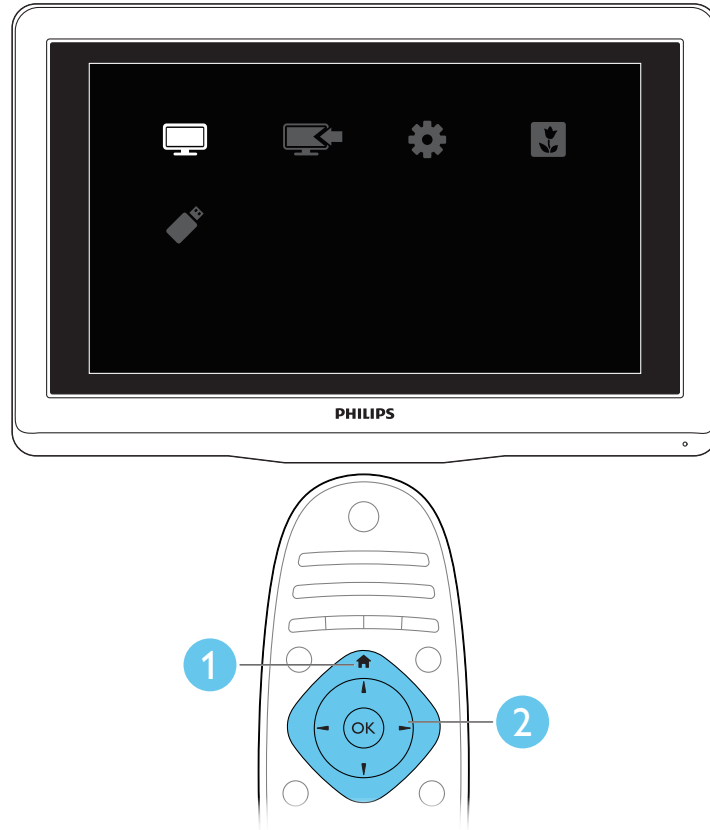
EN Select your language and follow the onscreen instructions

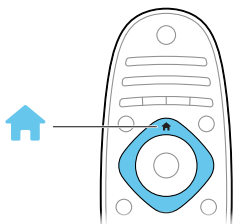
ES Seleccione el idioma y siga las instrucciones en la pantalla



6

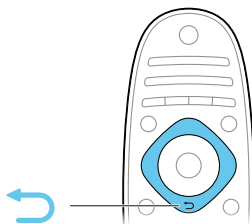
EN Watch TV
ES Vea TV





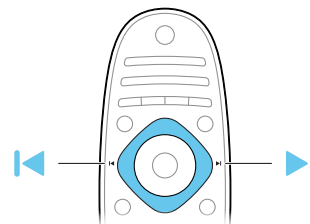
EN Home
Access Home menu

ES Inicio
Acceso a menú de inicio



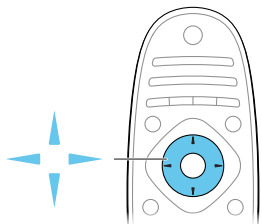
EN Back
Return to the previous page

ES Atrás
Regrese al menú anterior



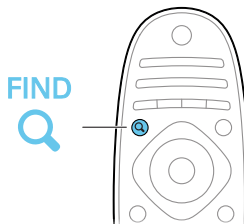
EN Previous / Next
Switch channels or menu pages

ES Anterior / Siguiente
Cambie páginas de canales o menú



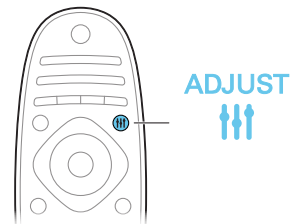
EN Navigation
Navigate menus or make selections

ES Navegación
Navegue por el menú o haga selecciones



EN Find
Access channel list

ES Búsqueda
Acceso a channel list

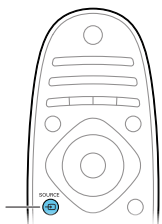


EN Adjust
Adjust TV settings

ES Ajustar
Ajuste la configuración de TV

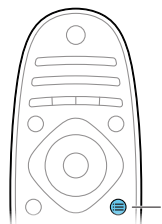


SOURCE



EN Source
Access connected
devices

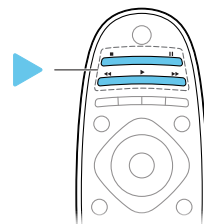
ES Fuente
Acceso a dispositivos
conectados



OPTIONS

EN Options
Access TV options

ES Opciones
Acceda a opciones de TV



EN Play button
Control video or music
play

ES Botón de reproducción
Control de video o
reproductor de música.



EN Download software updates and a printable user manual from www.philips.com/support.

ES Por motivos de sustentabilidad este manual no se ha impreso, y se encuentra disponible en la ayuda en pantalla de su producto. En www.philips.com/support puede encontrar un manual para imprimir, además de las actualizaciones para este producto.



Non-contractual images. / Images non contractuelles. / Außervertragliche Bilder.

All registered and unregistered trademarks are property of their respective owners.

Specifications are subject to change without notice.

Trademarks are the property of Koninklijke Philips Electronics N.V. or their respective owners.

© Koninklijke Philips Electronics N.V. All rights reserved.

www.philips.com



www.philips.com/support

