



Philips 6900 series  
Android Smart LED TV

**80 cm (32")**

LED TV  
Android / AI voice control



32PHT6915

## Android Smart LED TV

Family movie night. The big game. Whatever the occasion, settle down to superb picture quality and great sound. This TV makes all your content look great,

### **A TV that's more than Smart, it's beautiful**

- Borderless design. Another Philips ingenious invention
- Black arch edge stands

### **Android TV-content at your command**

- Android TV. Simply smart.
- Google Assistant. Control the TV with your voice.
- Google Play store. More to love

### **Rich sound. Feel more.**

- Dolby Digital Plus - improved sound and realistic audio feel
- Deep bass and crystal-clear dialogue.

# PHILIPS

Android Smart LED TV  
80 cm (32") LED TV, Android / AI voice control

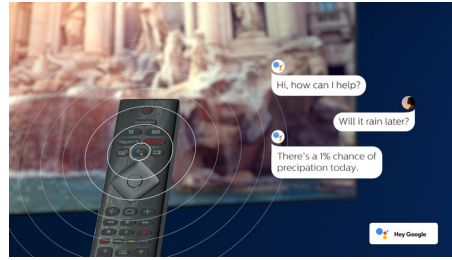
32PHT6915/56

# Highlights

## Android TV

Make your Philips Android TV your own. If it's all about Amazon and YouTube this week, and Netflix next week-no problem. A clear, intuitive interface lets you put the content you love front and center. Easily pick up where you left off in the latest series, or check out the new movie releases.

## Google Assistant



Control your Philips Android TV with your voice. Want to play a game, watch Netflix, or find content and apps in the Google Play store? Just tell your TV. You can even command all Google Assistant-compatible smart home devices-like dimming the lights and setting the thermostat on movie night. Without leaving the sofa.

## TV content

Go beyond traditional TV programming with Google Play Store . Experience endless movies, TV, music, apps and games online. More to love.

## Dolby Digital Plus

Dolby Digital Plus, the world's leading digital multi-channel audio standards, make use of the way the human ear naturally processes sound, you experience superb quality audio sound with realistic spatial effects.

## DTS HD

DTS HD optimizes sound processing by preserving the original sound content so that you can enjoy a better sound from your speakers with crystal-clear dialog.

androidtv

NETFLIX

YouTube

prime video

Ok Google

dts-HD

USB

Bluetooth®

# Specifications

## Picture/Display

- Display: LED HD TV
- Panel resolution: 1366 x 768
- Aspect ratio: 16:9
- Picture enhancement: HDR10

## Tuner/Reception/Transmission

- MPEG Support: MPEG2, MPEG4
- Video Playback: PAL, SECAM, NTSC
- TV Program guide\*: 8 day Electronic Program Guide
- Digital TV: DVB-T/T2

## Connectivity

- Number of HDMI connections: 3
- Number of USBs: 2
- Other connections: Headphone out, Digital audio out (optical), Antenna IEC75, Service connector, PC Audio In (3.5mm)
- Wireless connections: Wi-Fi 802.11n, 2x2, Single band, Bluetooth 4.2
- SPDIF digital sound output: 1 (Optical)
- HDMI features: Audio Return Channel

## Multimedia Applications

- Video Playback Formats: Containers: AVI, MKV, H264/MPEG-4 AVC, MPEG-1, MPEG-2, MPEG-4, WMV9/VC1, VP9, HEVC 265@FHD
- Subtitles Formats Support: .SMI, .SRT, .SUB, .TXT
- Music Playback Formats: AAC, MP3, WAV, WMA (v2 up to v9.2), WMA-PRO (v9 and v10)
- Picture Playback Formats: JPEG, GIF, PNG, HEIF

## Power

- Mains power: AC 110-240V 50/60Hz

- Standby power consumption: <0.5W
- Ambient temperature: 5 °C to 35 °C

## Sound

- Output power (RMS): 10W
- Speaker configuration: 5W\*2 speaker
- Sound Enhancement: Bass Control, Virtual Surround

## Dimensions

- Box dimensions (W x H x D): 798 x 516 x 133 mm
- Set dimensions (W x H x D): 719.2 x 433.7 x 75.6 mm
- Set dimensions with stand (W x H x D): 719.2 x 491.5 x 176.5 mm
- Product weight: 4 kg
- Product weight (+stand): 4.2 kg
- Weight incl. Packaging: 6.4 kg
- VESA wall mount compatible: 100 x 100 mm

## Accessories

- Included accessories: Remote Control, 2 x AAA Batteries, Power cord, Quick start guide, Legal and safety brochure, Table top stand

## Android TV

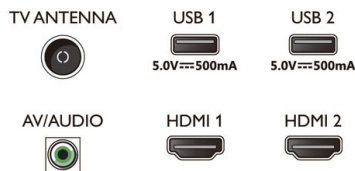
- OS: Android TV™ 9 (Pie)
- Pre-installed apps: Google Play Movies\*, Google Play Music\*, Google Search, YouTube, Amazon Prime Video, Netflix

## Smart TV

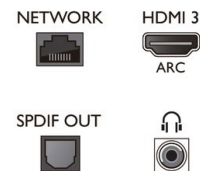
- SmartTV apps\*: Netflix, YouTube

## Connections

### Side



### Rear



Issue date 2021-07-09

Version: 7.1.1

12 NC: 8670 001 71399  
EAN: 87 18863 02642 7

© 2021 Koninklijke Philips N.V.  
All Rights reserved.

Specifications are subject to change without notice.  
Trademarks are the property of Koninklijke Philips N.V.  
or their respective owners.

[www.philips.com](http://www.philips.com)

- \* EPG and actual visibility (up to 8 days) is country and operator dependent.
- \* The TV supports DVB reception for 'Free to air' broadcast. Specific DVB operators may not be supported. An up to date list can be found in the FAQ section of the Philips support website. For some operators Conditional Access and subscription are required. Contact your operator for more information.
- \* Smart TV app offerings vary per TV model and country. For more details please visit: [www.philips.com/smarttv](http://www.philips.com/smarttv).
- \* Philips TV does not guarantee 100% interoperability with all HDMI CEC devices
- \* Its functionality is subject to ChromeCast built-in apps and smart devices. For more details, please visit ChromeCast built-in product pages.
- \* Image depicted on the website are non-contractual pictures. Please always refer to the actual TV that are sold in the retail or stores.
- \* Due to the transmission limitations of Bluetooth wireless technology, a slight sound delay might occur when you hear audio from your bluetooth headphone or bluetooth speakers. When this occur, you might see the character moving his or her mouth but there is a slight delay in spoken dialog accompany
- \* Please kindly note that the remote control that is being supplied inside your TV is the most latest and updated version. if you need further information, please approach your local customer service center.