



Philips
Professional LCD TV

32" PrimeSuite

LCD DVB-T/C MPEG 2/4

32HFL4372D

Versatile and outstanding in every way

Philips Hospitality LCD TV

This modern Hospitality TV brings more guest convenience to the room. It also allows you to show HD channels to your guests in both standalone and interactive set-up.

Advanced hotel features and future proof

- MyChoice compatibility for recurring revenues
- Integrated Connectivity Panel
- Theme TV for easy location of guests' own national channels
- VSecure for digital content protection in hotels
- Installation menu locking
- Programmable Switch On Channel
- One combined channel list for Analogue and Digital channels

Differentiating guest experience

- Integrated clock display with wake-up and message alarm
- Advanced EPG and channel list
- USB for fantastic multimedia playback
- Volume limitation

Sustainable and safe

- Low power consumption

PHILIPS
sense and simplicity

Highlights

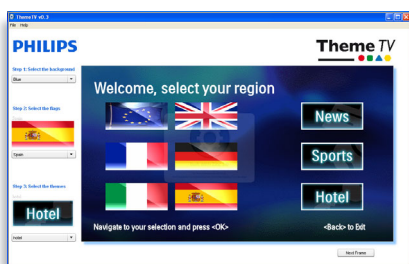
MyChoice compatible

MyChoice offers a simple and low-cost way to offer your guests premium TV channels. At the same time it delivers an additional revenue stream which allows you to recover your initial TV investment.

Integrated Connectivity Panel

The Integrated Connectivity Panel allows your guests to seamlessly connect their personal devices to your TV without the need for an external Connectivity Panel.

Theme TV



Theme TV offers an advanced user interface that enables your guests to navigate the guest menu to find their own country's channels, news and hotel information easily without the need of an interactive entertainment system.

VSecure

To show HD premium content to the guest there is a need for strict content security precautions from the content industry. Philips has developed a total solution for HD content security in hotels, consisting of VSecure for HD content protection and NexGuard for HD forensic watermarking.

Integrated clock display

The built-in clock display, which is also a wake-up alarm, eliminates the need to invest in an additional clock with cables and connections in the room.

USB (multimedia)



The USB connector allows access to jpeg photos, MP3 music and video files on most USB sticks (USB memory-class device). Plug the USB into the slot on the side of the TV and

access the multimedia content using the easy on-screen content browser. You can now view and share your videos, photos and music.

Eco-friendly design

Sustainability is integral to the way Philips does business. Philips TVs are designed and produced according to our EcoDesign principles aimed at minimising overall environmental impact, through lower power consumption, removal of hazardous substances, lower weight, more efficient packaging and better recyclability. Philips TVs also have a special housing of flame-retardant material. Independent tests carried out by emergency fire services have shown that whereas TVs can sometimes intensify fires caused by external sources, Philips TVs will not contribute to a fire.

Advanced EPG and channel list

The attractive EPG and channel list include intuitive buttons with clear guiding graphics to easily locate your favourite channels.

Programmable Switch On Channel

Perfect for in-house advertising or information channels as it allows a predefined channel to be shown when the TV is turned on.

Hospitality features, system compatible

All Philips Hospitality TVs are especially made for the hospitality, detention and healthcare environments. Special features include volume limitation, menu locking, cloning and a special remote control. The PrimeSuite TV is designed for the system market and has full interactivity with a Set Top Box.

Specifications

Picture/Display

- Diagonal screen size: 32 inch / 81 cm
- Aspect ratio: Widescreen
- Display screen type: LCD WXGA+ Active Matrix TFT
- Panel resolution: 1366 x 768p
- Brightness: 450 cd/m²
- Response time (typical): 8 ms
- Picture enhancement: 3/2 - 2/2 motion pull down, 3D Combfilter, Active Control, Colour Enhancement, Colour Transient Improvement, Digital Noise Reduction, Luminance Transient Improver, Progressive scan, Sharpness Adjustment, 3D MA deinterlacing, Automatic skin tone correction, Dynamic contrast enhancement, 1080p 24/25/30 Hz processing, 1080p 50/60 Hz processing, Pixel Plus HD
- Dynamic screen contrast: 150,000:1
- Screen enhancement: Anti-Reflection coated screen
- Viewing angle: 178° (H)/178° (V)
- Colour cabinet: High gloss black deco front with black cabinet
- Peak Luminance ratio: 74 %

Supported Display Resolution

• Video formats

Resolution	Refresh rate
480i	60 Hz
480p	60 Hz
576i	50 Hz
576p	50 Hz
1080i	50, 60 Hz
720p	50, 60 Hz
1080p	24, 50, 60 Hz
1080p	24, 25, 30, 50, 60 Hz

• Computer formats

Resolution	Refresh rate
640 x 480	60 Hz
800 x 600	60 Hz
1024 x 768	60 Hz
1280 x 1024	60 Hz
1280 x 720	60 Hz
1280 x 768	60 Hz
1360 x 768	60 Hz

Tuner/Reception/Transmission

- Aerial Input: 75 ohm coaxial (IEC75)
- Number of Pre-set Channels: 999

- Tuner bands: Hyperband, S-Channel, UHF, VHF
- TV system: PAL I, PAL B/G, SECAM B/G, SECAM L/L', DVB COFDM 2K/8K
- Video Playback: PAL, SECAM, NTSC
- Digital TV: DVB-C MPEG4, DVB-T MPEG4

Sound

- Output power (RMS): 2 x 5 W
- Sound System: Nicam Stereo
- Sound Enhancement: Auto Volume Leveller, Incredible Surround, Smart Sound

Loudspeakers

- Built-in speakers: 2

Connectivity

- Number of Scarts: 1
- Number of HDMI connections: 3
- Ext 1 Scart: Audio L/R, RGB, CVBS in/out
- Front/Side connections: Audio L/R in, USB 2.0, HDMI v1.3
- HDMI 1: HDMI v1.3
- EasyLink (HDMI-CEC): One touch play, System standby
- Audio Output - Digital: Coaxial (cinch)
- Other connections: S/PDIF out (coaxial), PC-in VGA + Audio L/R in, Bathroom speaker out, Common Interface Plus (CI+)
- Connectivity Enhancements: Serial Xpress interface, Fast Infrared loop through, Power on scart, USB2.0

Convenience

- Ease of Installation: Plug and Play, Advanced Hotel Mode, Automatic Tuning System (ATS), Fine Tuning, PLL Digital Tuning, Automatic Channel Install (ACI), Programme Name, Auto Programme Naming, Autostore, Cloning of TV settings via USB, Installation menu locking, Security menu access, Keyboard lock-out
- Ease of Use: Auto Volume Leveller (AVL), 1 channel list analogue/digital, On-Screen Display, Programme List, Side Control, Graphical User Interface
- Comfort: Hotel Guest features, Auto power on, Green/Fast startup, Welcome message, Message indicator, Switch on channel, Volume limitation, Sleep timer
- Interactive hotel features: Connectivity panel

- compatible, Block automatic channel update, Block over-the-air SW download
- Prison mode: Txt, MHEG, USB, EPG, Sub block
- Clock: Dimmable, Integrated LCD Clock Display, Sleep Timer, Wake-up Clock
- Clock Enhancements: Synchro Time via TXT/DVB
- Teletext: 1000-page Hypertext
- Teletext enhancements: Fast text, Programme information Line
- Electronic Programme Guide: 8-day Electronic Programme Guide, Now + Next EPG
- Screen Format Adjustments: 4:3, Movie expand 14:9, Movie expand 16:9, Widescreen, Subtitle Zoom, Super Zoom, Auto Format
- Remote control type: 22AV1104A/10 (RC6)
- Remote Control: low battery detection, battery anti-theft protection
- Firmware upgradeable: Firmware upgradeable via USB, Firmware upgradeable via RF
- Other convenience: Kensington lock

Healthcare

- Control: Multi remote control, Pendant control via IR-link
- Convenience: Headphone out, Independent main speaker mute
- Safety: Double isolation Class II

Multimedia Applications

- Multimedia connections: USB
- Playback Formats: MP3, JPEG Still pictures, Slideshow files (.alb)
- Video Playback Formats: H264/MPEG-4 AVC

Power

- Mains power: 220-240 V, 50/60 Hz
- Power consumption (typical): 82 W
- Ambient temperature: 5°C to 40°C
- Annual energy consumption: 77 kWh
- Mercury content: 35 mg
- Presence of lead: Yes*
- Standby power consumption: 0.22 W

Green Specifications

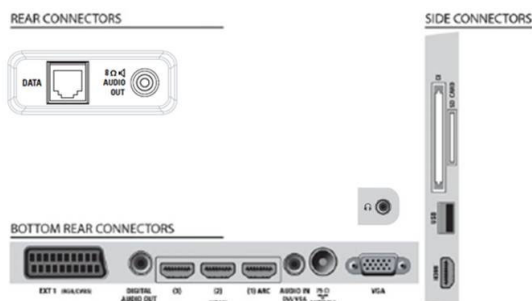
- Safety: Flame-retardant housing
- Low Power Standby
- SmartPower Eco

Dimensions

- Set dimensions (W x H x D): 800 x 534.8 x 87 mm
- Set dimensions with stand (W x H x D): 800 x 593 x 220 mm
- Box dimensions (W x H x D): 980 x 635 x 197 mm
- Product weight: 10.2 kg
- Product weight (+stand): 11.6 kg
- VESA wall mount compatible: 200 x 200 mm
- Weight incl. Packaging: 14.6 kg

Accessories

- Included accessories: Remote Control, Batteries for remote control, Power cord, Tabletop stand, Warranty Leaflet
- Optional accessories: Wall mount (tilt) 22AV3200/10, Set up remote 22AV8573/00



Issue date 2011-11-24

Version: 8.1.4

12 NC: 8670 000 63048
EAN: 87 12581 54356 3

© 2011 Koninklijke Philips Electronics N.V.
All Rights reserved.

Specifications are subject to change without notice.
Trademarks are the property of Koninklijke Philips Electronics N.V. or their respective owners.

www.philips.com

* Annual energy consumption is calculated using the typical power consumption of 4 hours per day, 365 days per year.
* This television contains lead only in certain parts or components where no technology alternatives exist in accordance with existing exemption clauses under the RoHS Directive.
* Typical on-mode power consumption measured according to IEC62087 Ed 2.