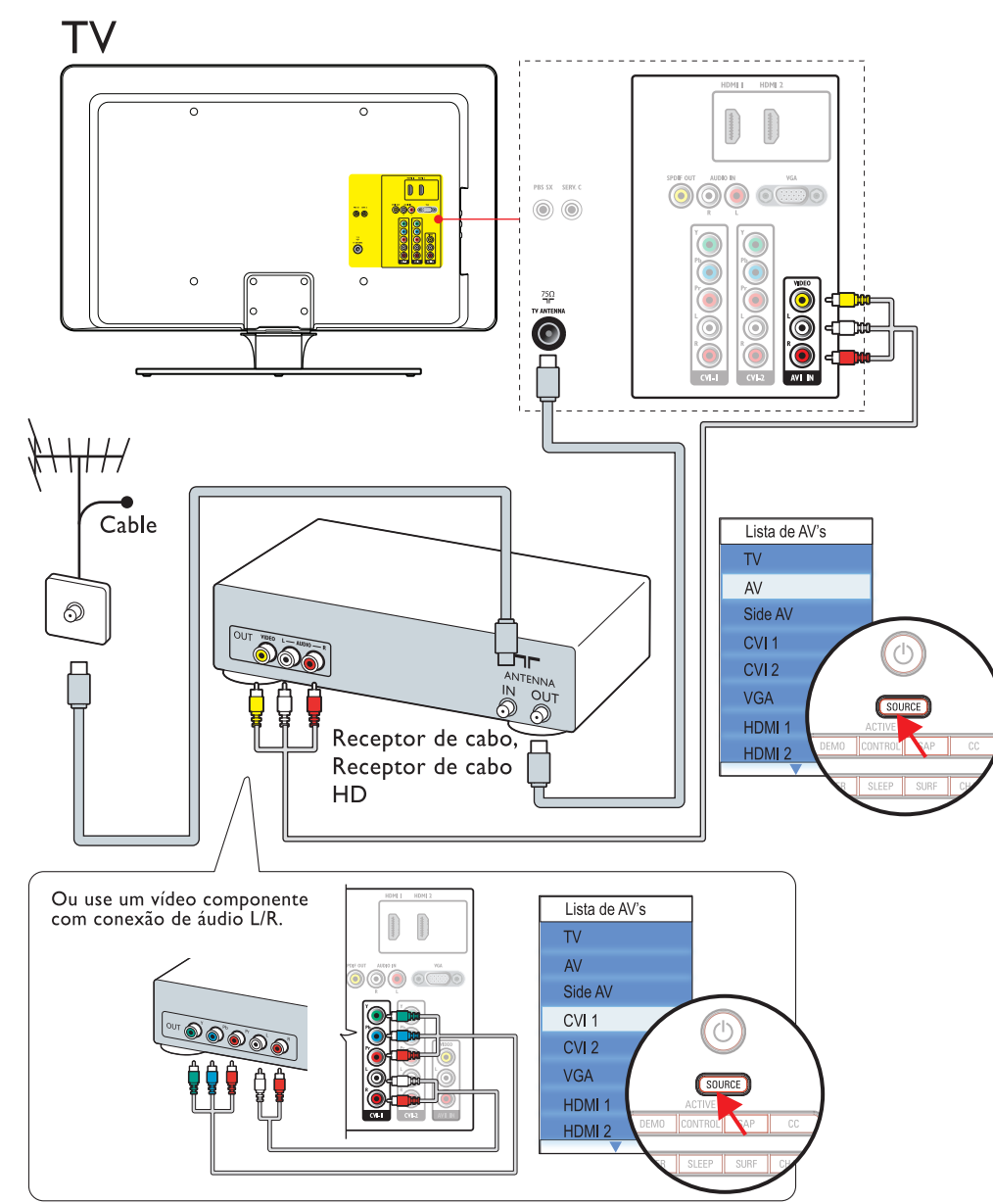
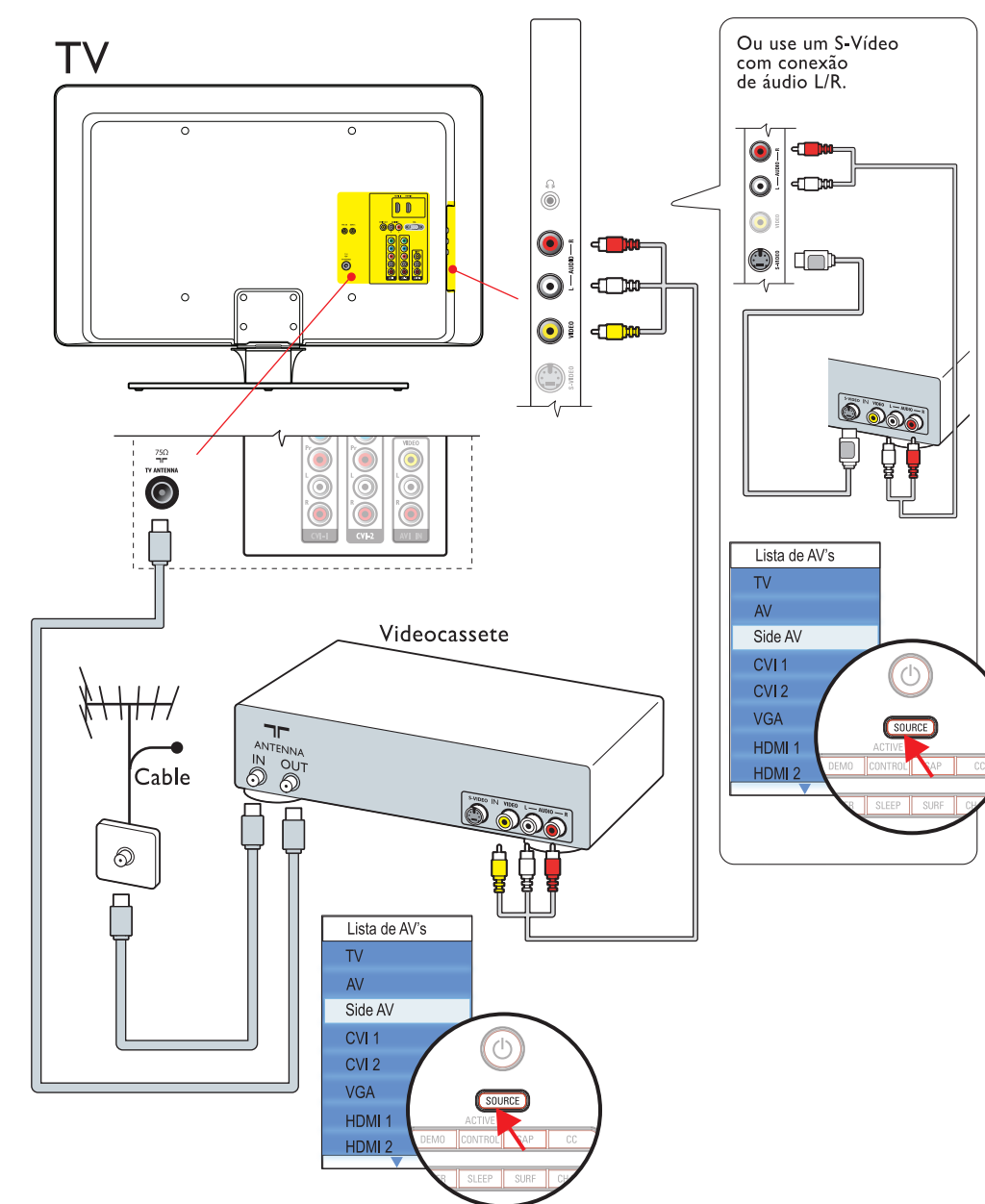


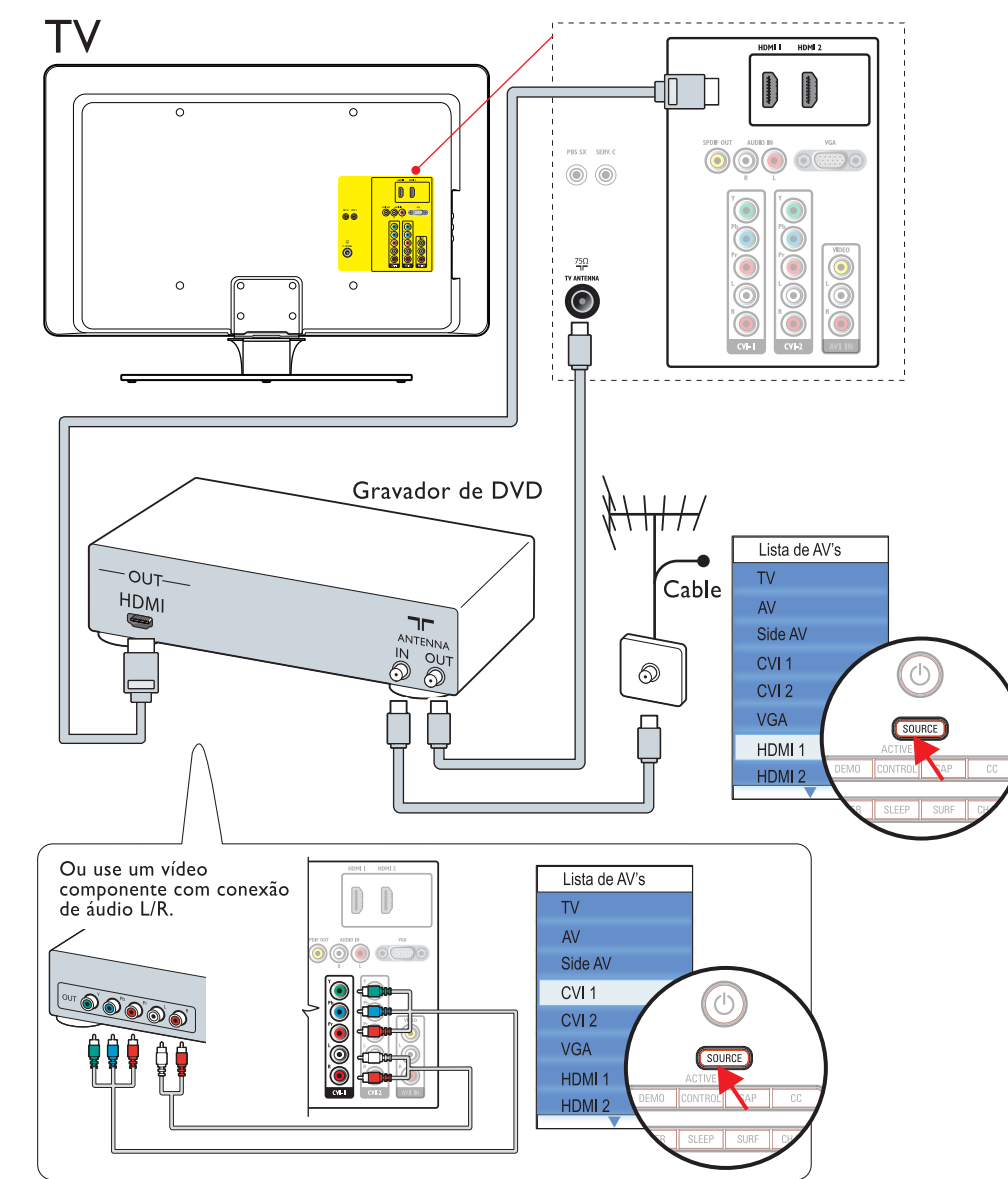
Receptor de cabo, Receptor de cabo HD



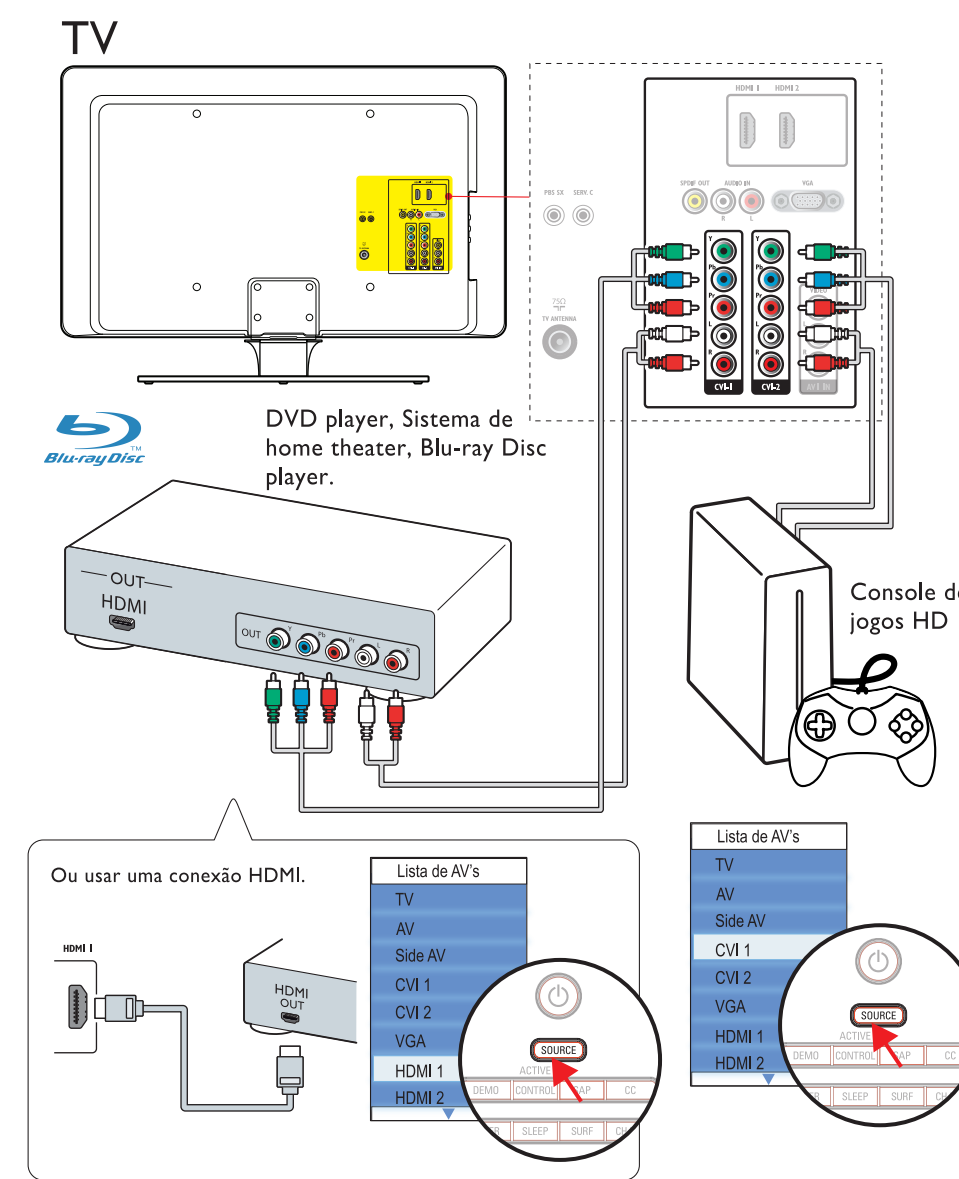
Videocassete



Gravador de DVD

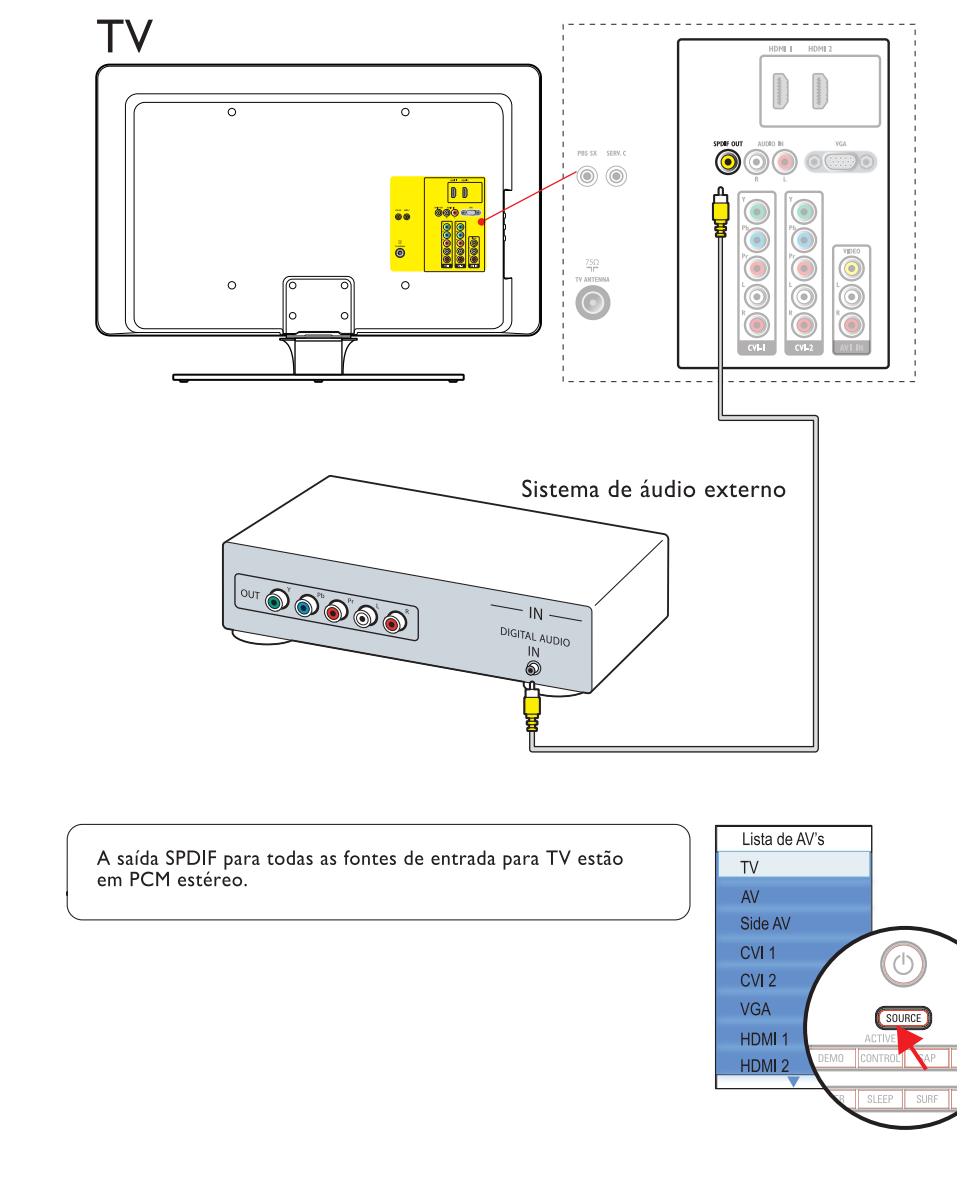


DVD player, Sistema de home theater, Blu-ray Disc player, Console de jogos HD

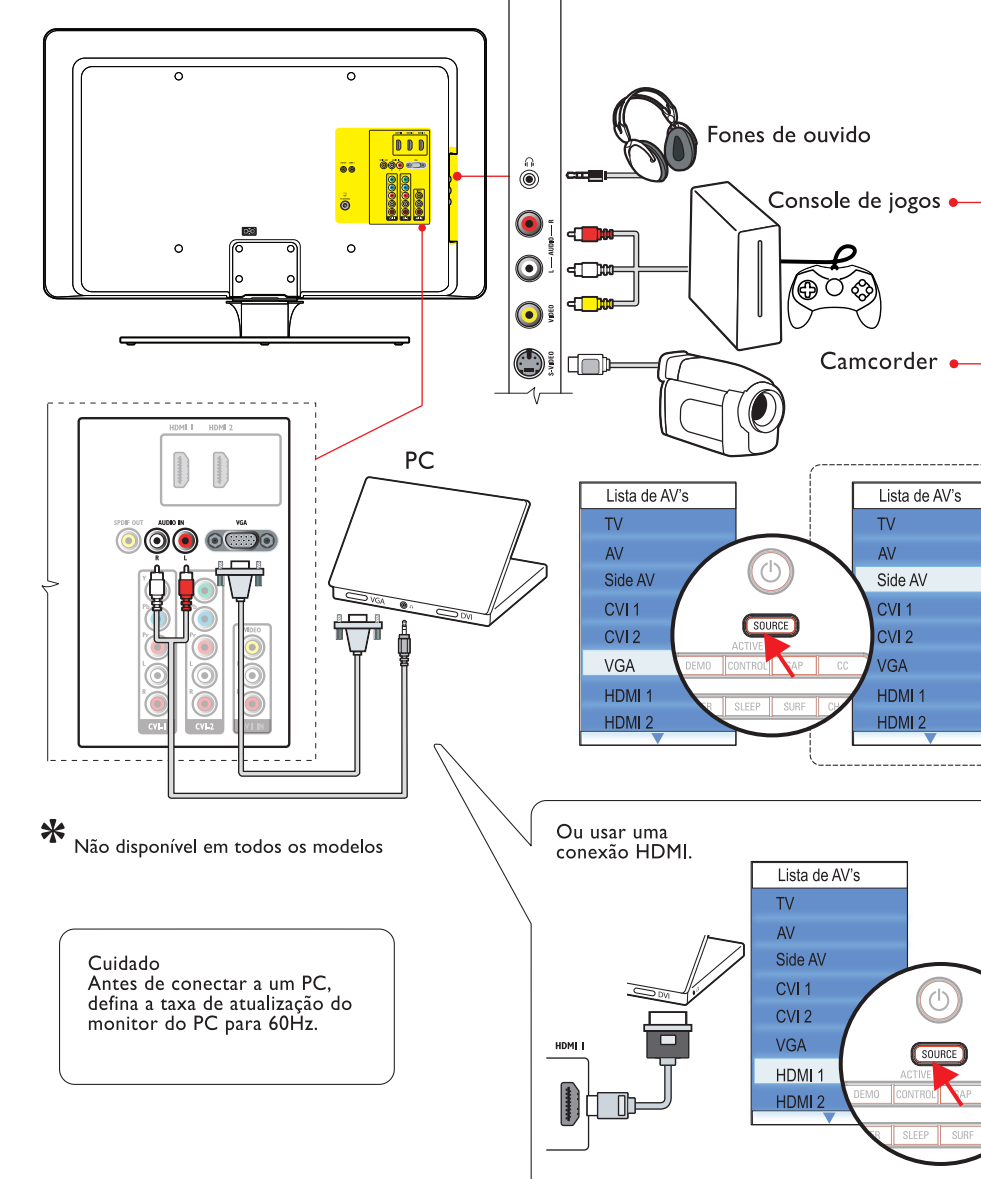


Sistema de áudio externo*

* Não disponível em todos os modelos



HD camcorder*, Fones de ouvido, Console de jogos, camcorder, PC

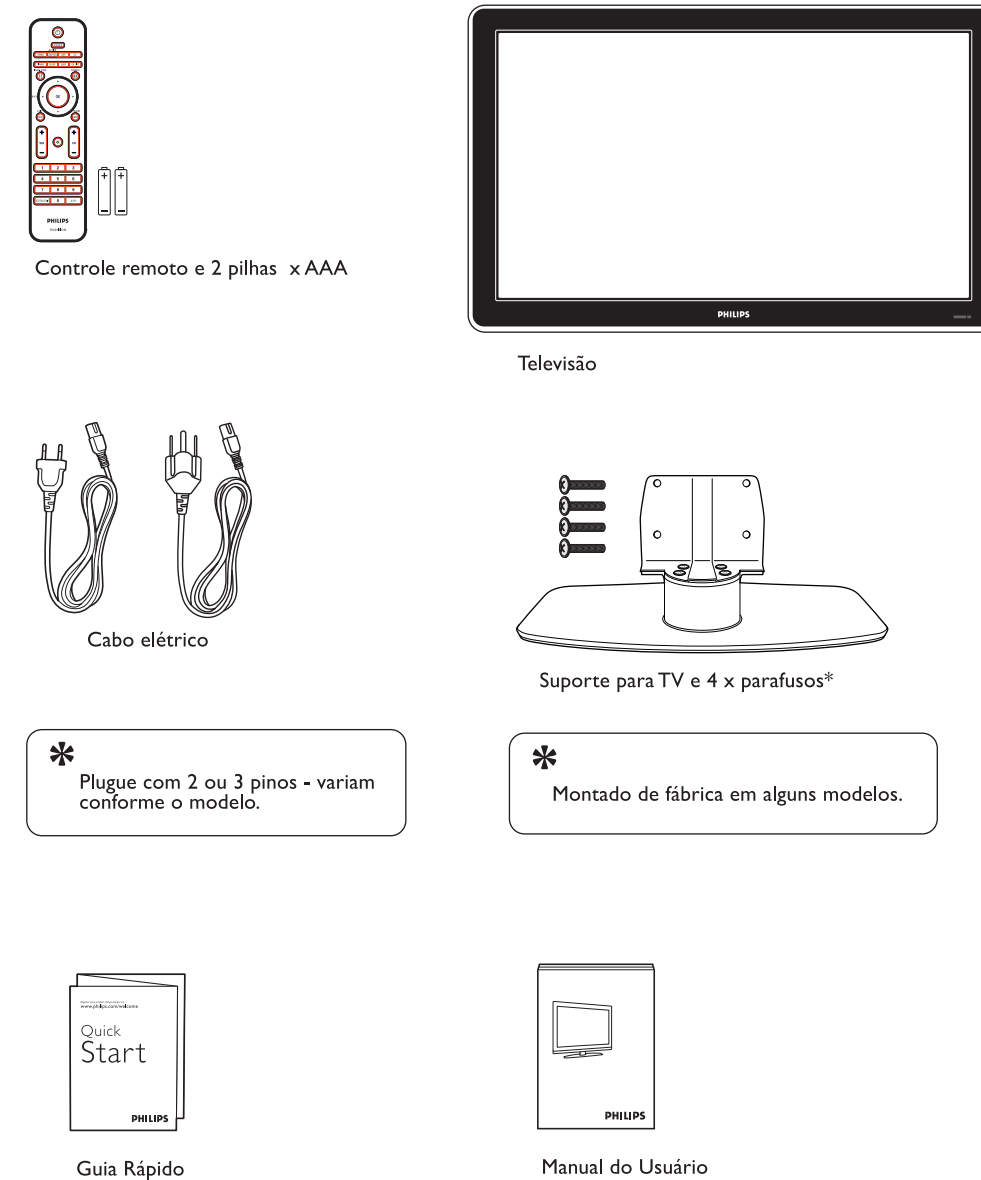


Guia Rápido

Instalação

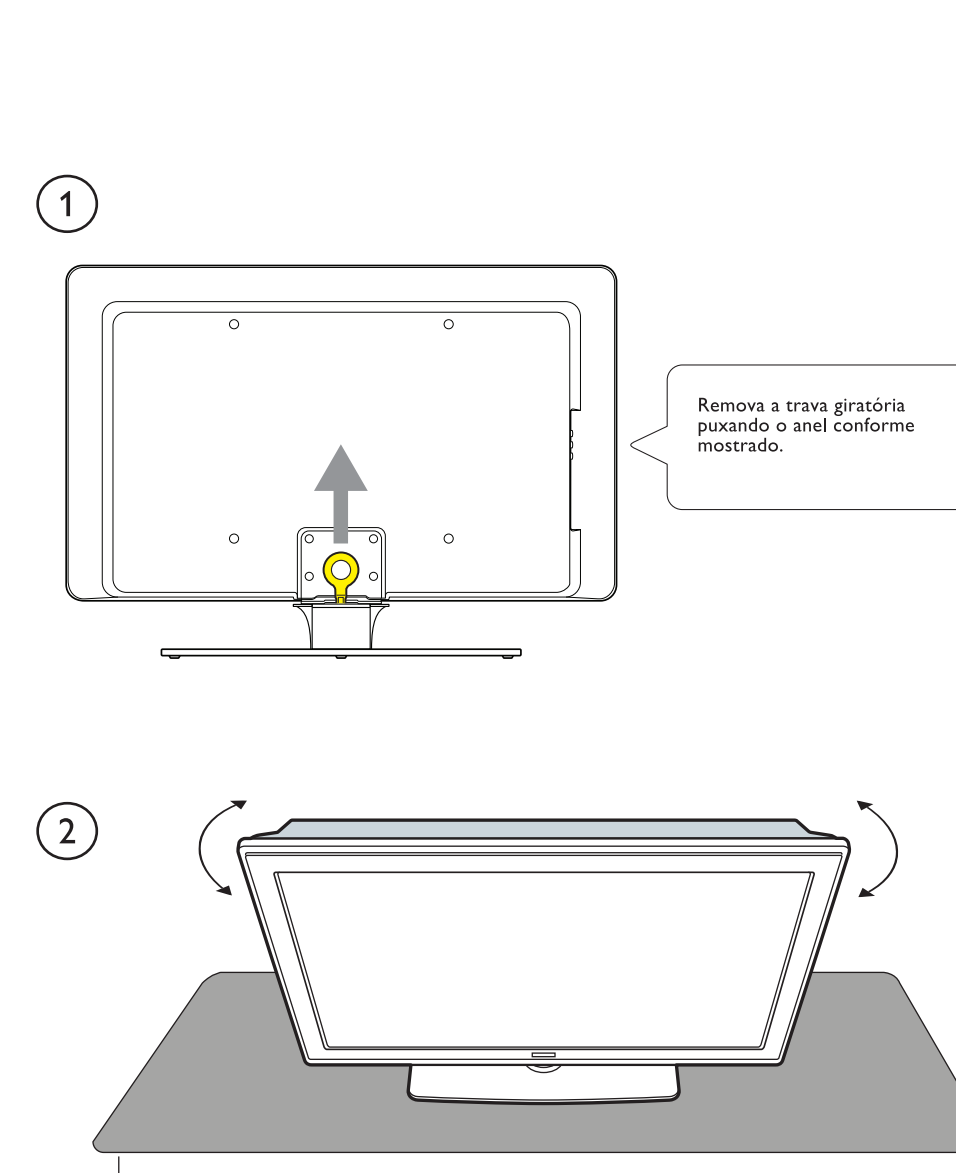


O que há na embalagem



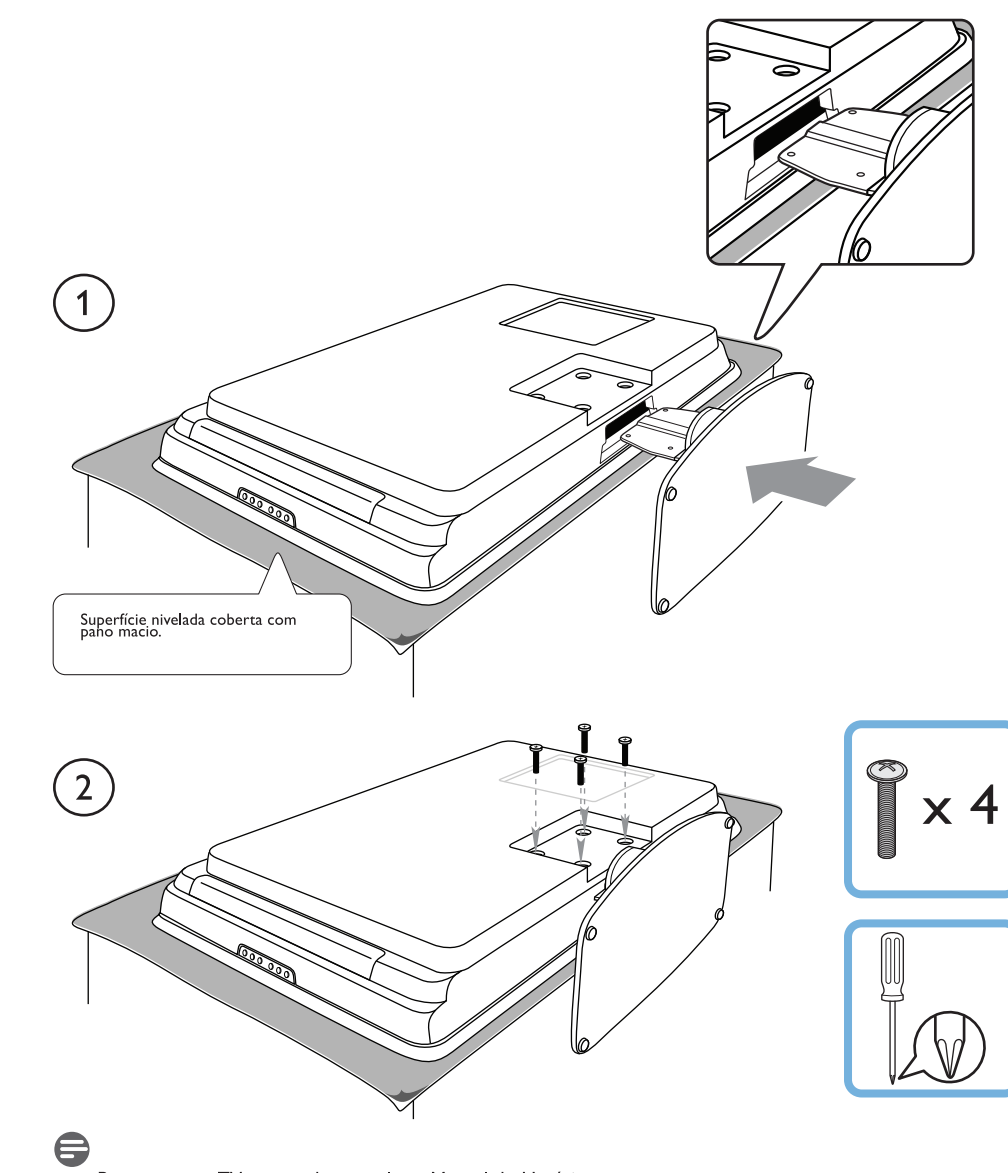
Remove a trava giratória*

* Para conjuntos de 42" e superior.

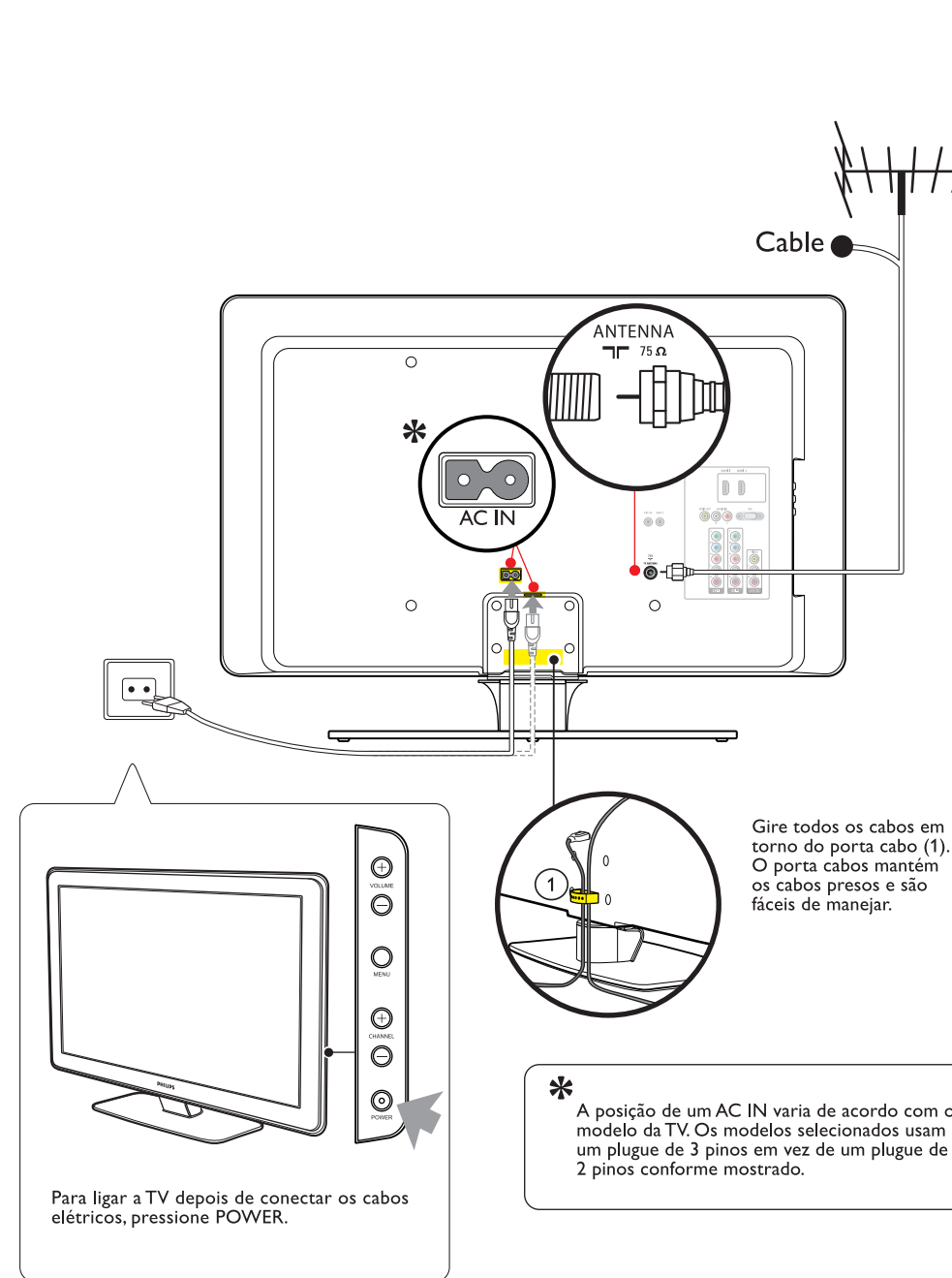


Monte a TV*

* Para conjuntos de 32".

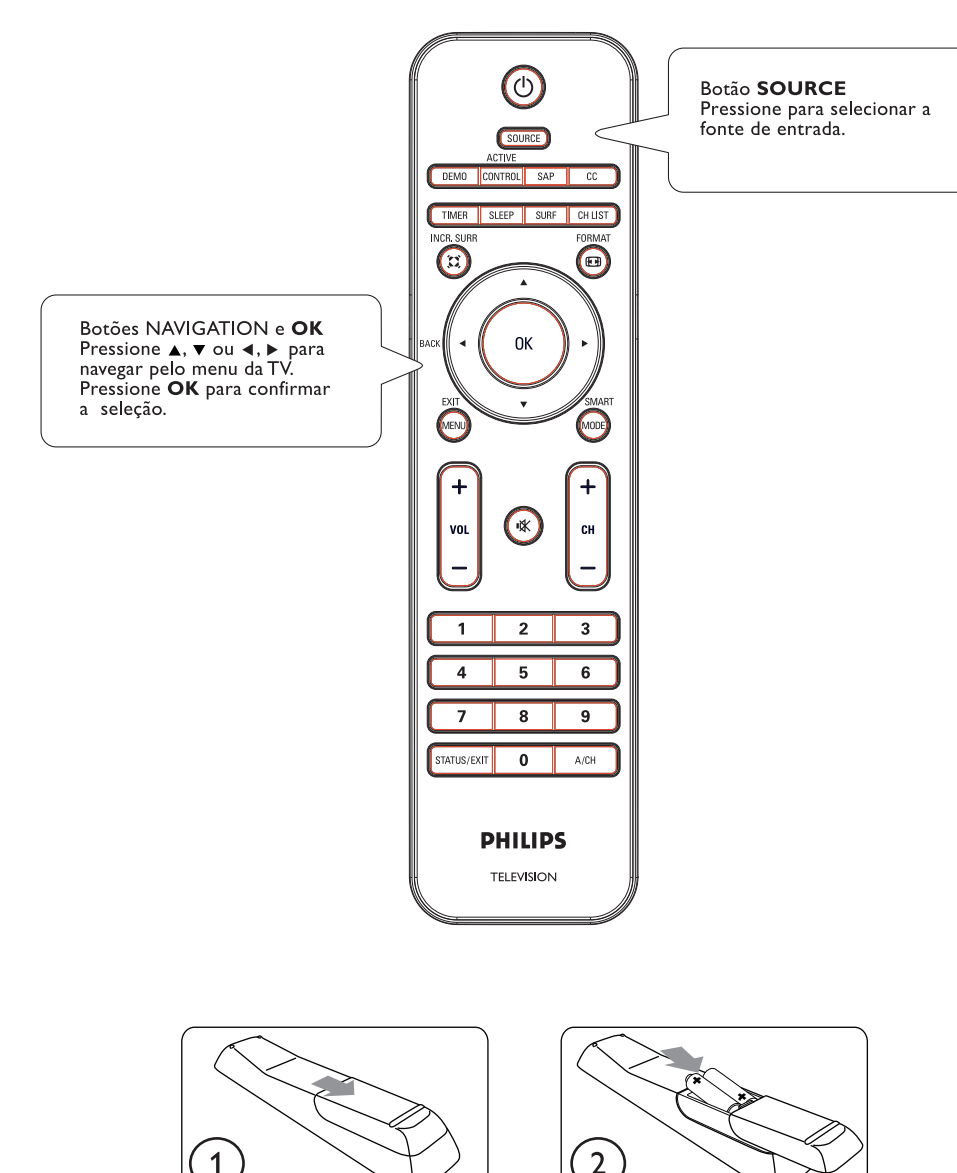


Conecte os cabos* e a antena



Use o controle remoto*

* O controle remoto pode ser diferente de acordo com o modelo da TV.



Instalação do programa

