

PHILIPS

Straightener

HP8350/00



Salon style that stays all day

SalonStraight Pro XL

For use on all hairtypes but specially designed for long or thick hair, the SalonStraight Pro XL makes straightening quick and easy. Ceramic plates and a professional temperature of 220°C ensures great results

Beautifully styled hair

- Extra wide plates for better results with thick or long hair
- 220°C professional high heat for perfect salon results
- Ceramic plates for smooth gliding and shiny hair

Ease of use

- Digital heat settings to ensure super smooth results
- Automatic shut-off after 60 min
- Ready to use indicator
- 1.8 m power cord
- Easy lock for convenient storage
- Universal voltage
- Fast heat up time, ready to use in 30 seconds
- Swivel cord to prevent tangled wires

Less hair damage

- EHD+ technology for more protection and shinier results

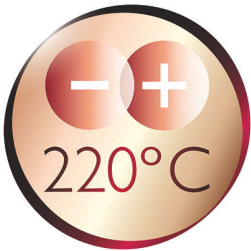
Highlights

Wide plates



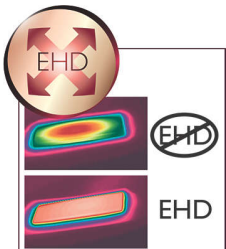
These extra wide straightening plates have been designed specifically for thick or long hair. The increased plate width can straighten more hair in one go and will help to reduce the time taken.

220°C professional temperature



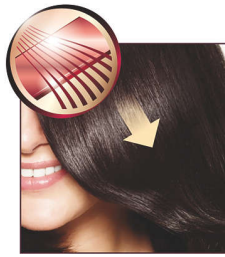
This high temperature enables you to change the shape of your hair, and gives you that perfect look like you've just come from the salon.

EHD+ technology



Advanced Philips EHD+ technology means that your styler will always distribute the heat very evenly - even at high temperatures, and prevents damaging hot spots. This gives added protection and thus helps to keep your hair healthy and shiny.

Ceramic plates



Ceramic is microscopically smooth and durable by nature and it is one of the best materials for straightening plates. The plates glide effortlessly through your hair, giving you perfect shiny hair.

Digital heat settings



Digital heat settings make it easy to quickly choose the function you need or adjust the styling temperature using the digital display. This enables you to select the perfect temperature for your specific hair and needs. The result is perfect styling at the touch of a button.

Instant heat up



The straightener has a fast heat up time, being ready to use in 30 seconds

Safe usage

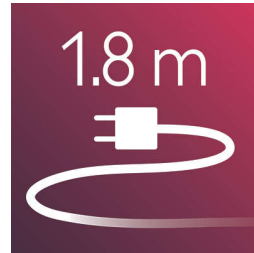


Some hair straighteners and curling irons have been equipped with an automatic shut-off feature. This feature has been designed to provide peace of mind. If left on, the appliance will automatically switch off after 60 min.

Easy lock

Easy lock for convenient storage

1.8 m cord



1.8 m power cord

Ready to use indicator



This shows when the styler has reached the right temperature, so you can instantly see when you're ready to style.

Swivel cord

Useful swivel cord technology rotates the cord to prevent tangled wires.

Specifications

Technical specifications

Cord length: 1,8 m

Heating time: 30s

Maximum temperature: 220 °C

Heater type: High-performance

Features

Ceramic coating

Ready for use indicator

Swivel cord

Hair type

End result: Straight

Hair thickness: Thin, Thick

Hair length: Long, Medium, Short

Service

2-year worldwide guarantee

