

Register your product and get support at
www.philips.com/welcome

5000 LED series

Quick start guide

Guía de inicio rápido
Instruções básicas de uso



PHILIPS



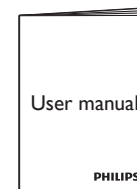
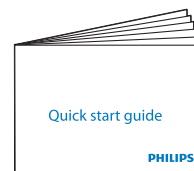
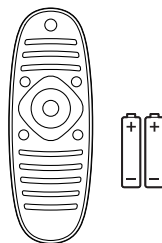
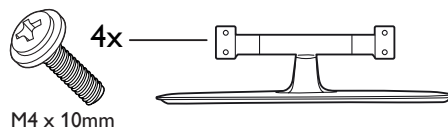
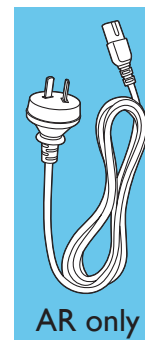
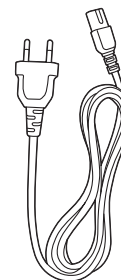
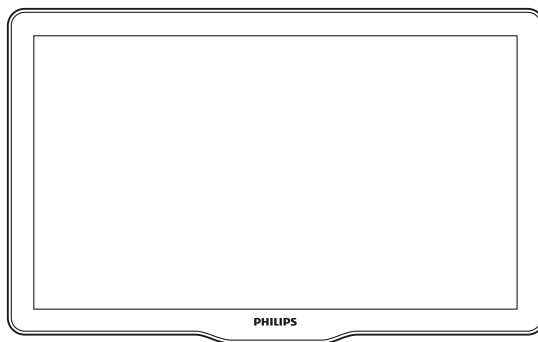
- EN** Before using your product, read all accompanying safety information
- ES** Antes de usar el producto, lea la información de seguridad adjunta
- PT** Antes de usar o produto, leia todas as informações de segurança em anexo.



EN What's in the box

ES Contenido de la caja

PT Conteúdo da embalagem

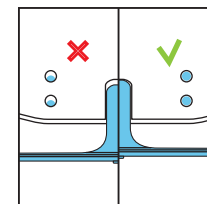
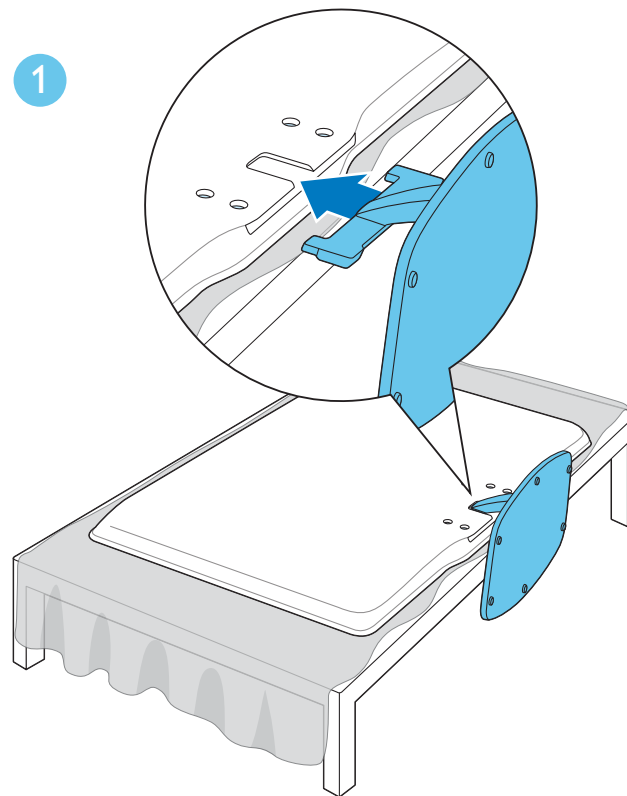


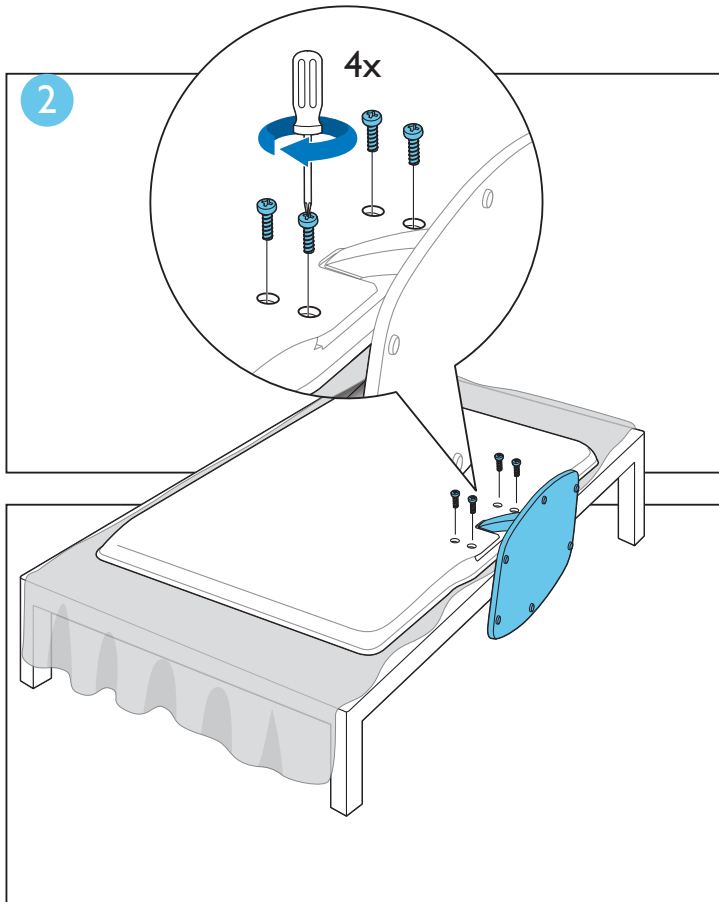
1



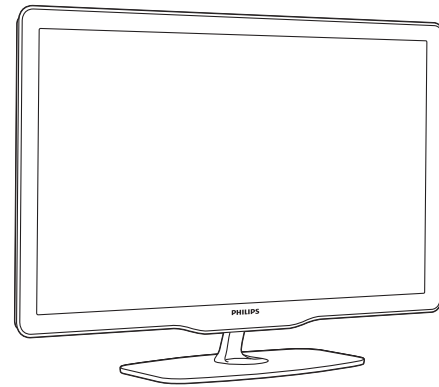
EN Mount the stand
ES Monte el soporte
PT Monte o suporte

1





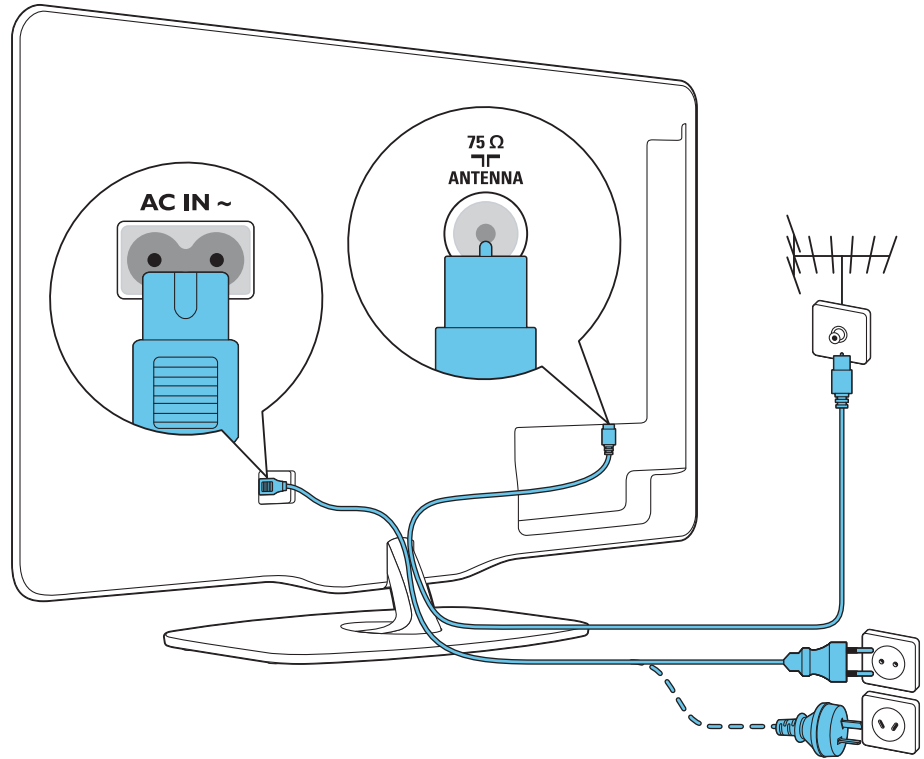
3

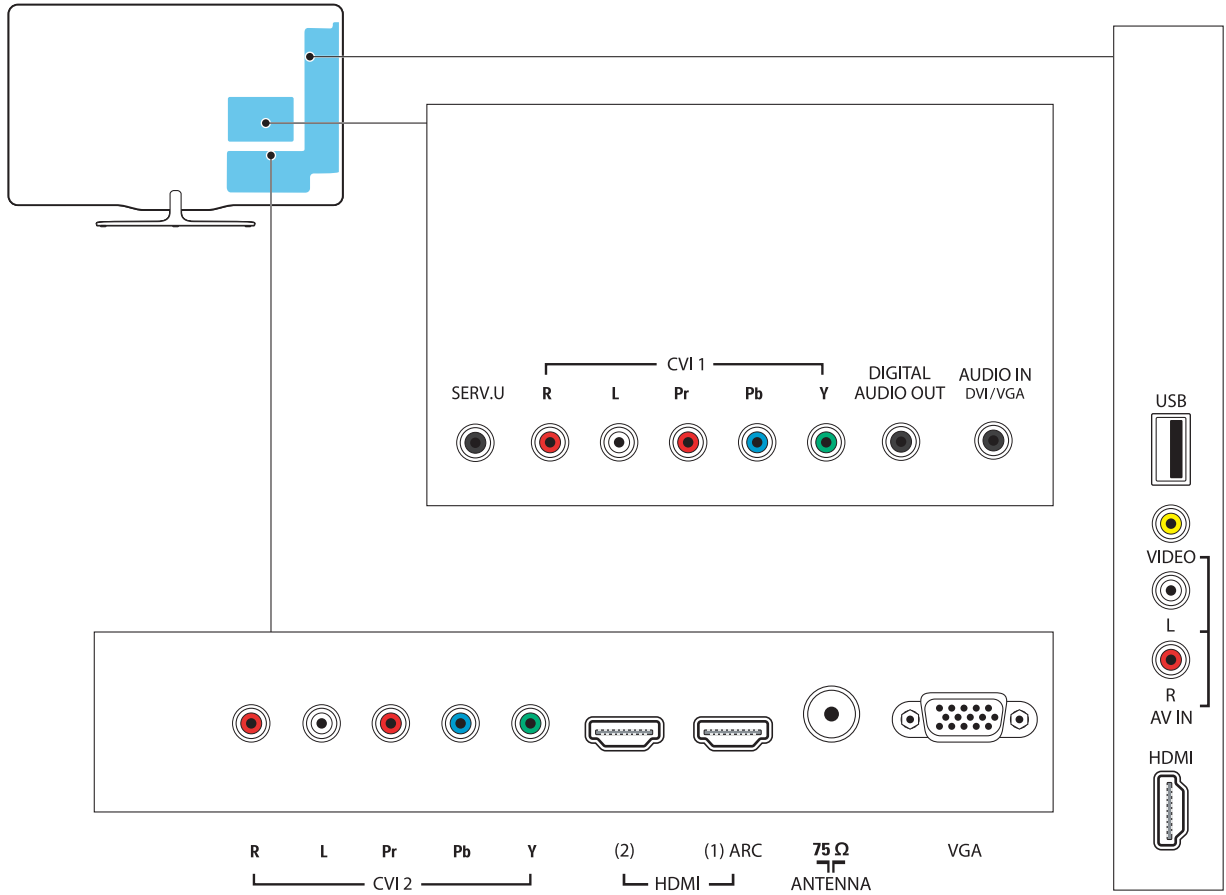


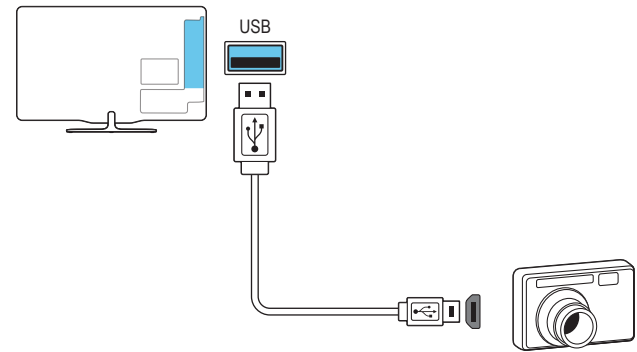
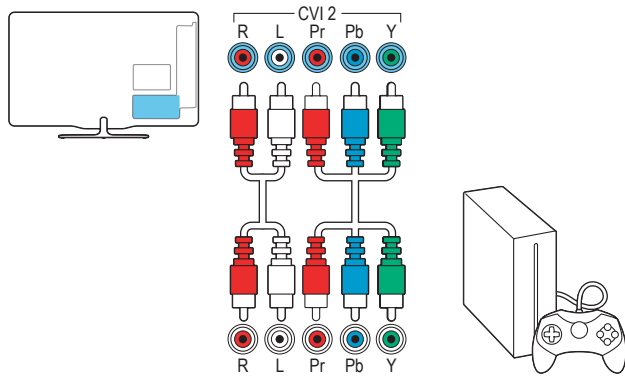
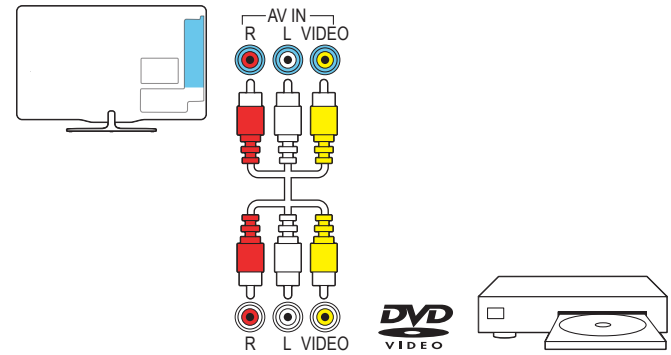
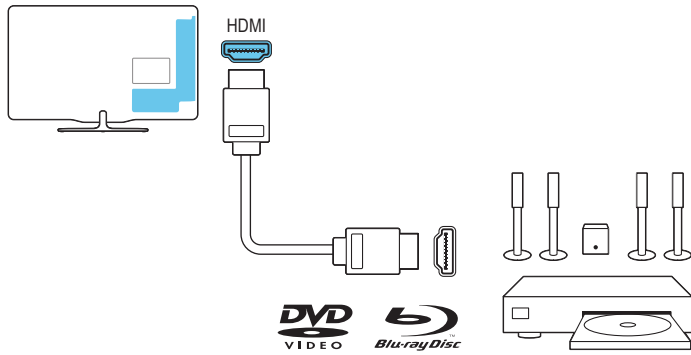
2

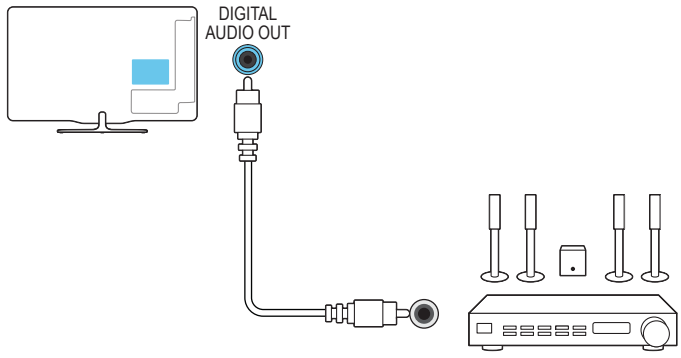
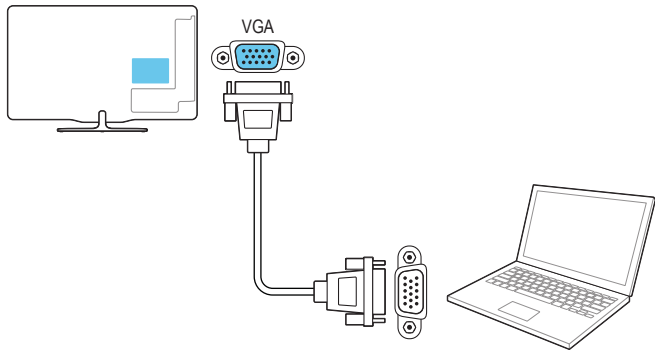


- EN** Connect
- ES** Conexión
- PT** Conectar



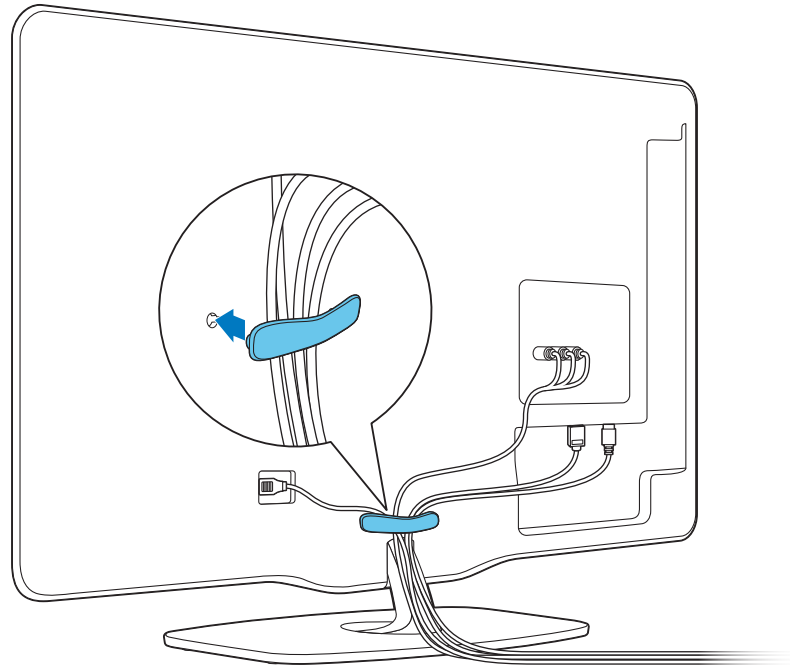






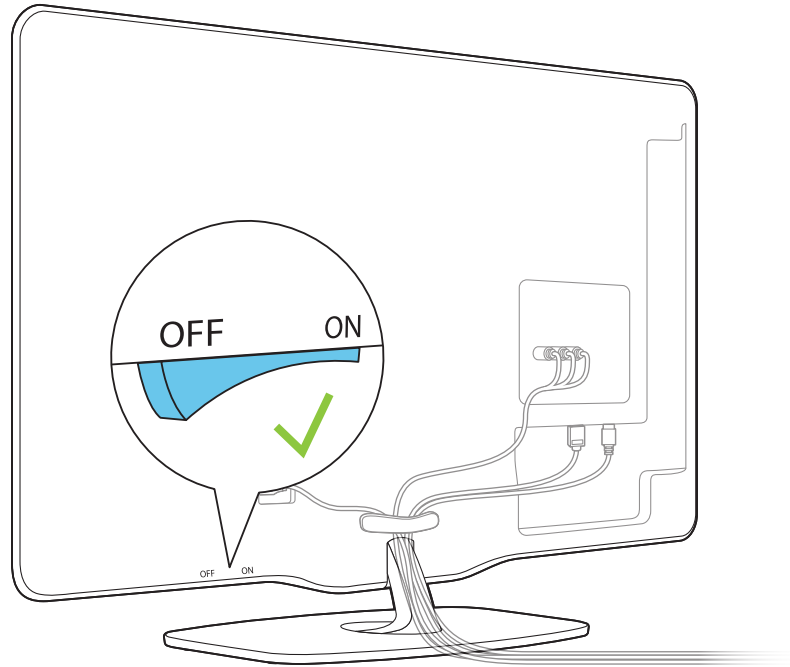
3

- EN** Manage cables
- ES** Ordene los cables
- PT** Gerenciar cabos



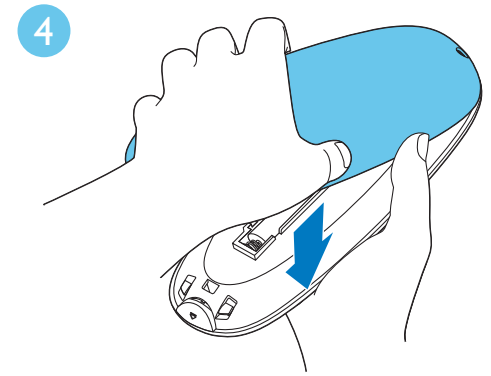
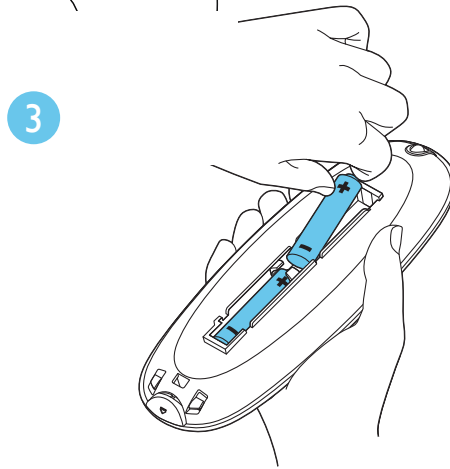
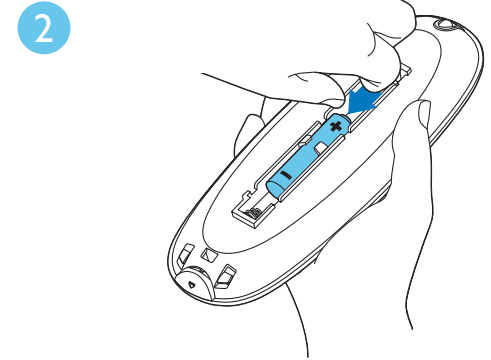
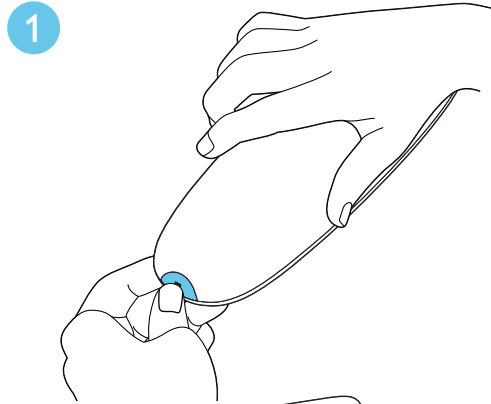
4

- EN** Check that the power switch is on
- ES** Verifique que el interruptor esté encendido
- PT** Verifique se o botão ligar está ativado



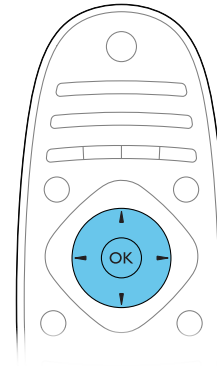
5

EN Insert batteries
ES Inserte las baterías
PT Insira as pilhas



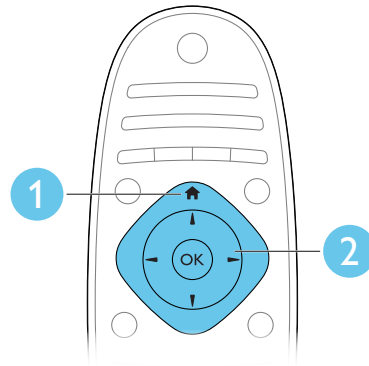
6

- EN** Select your language and follow the onscreen instructions
- ES** Seleccione el idioma y siga las instrucciones en la pantalla
- PT** Selecione o idioma e siga as instruções na tela



7

- EN** Watch TV
- ES** Veá TV
- PT** Assista a TV

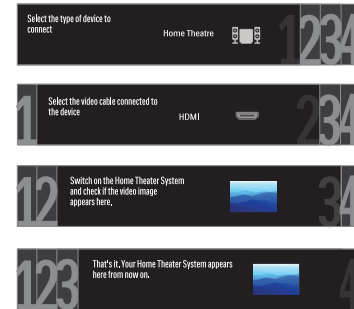
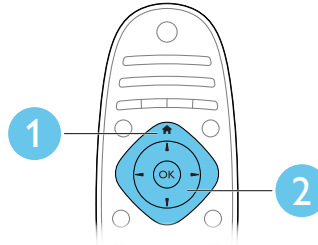




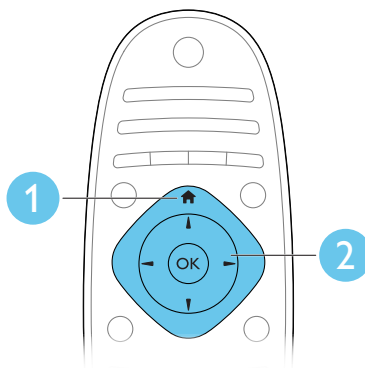
EN Add your device

ES Agregue su dispositivo

PT Adicione seu dispositivo

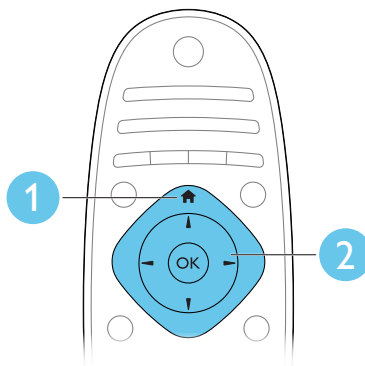


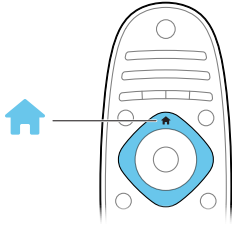
- EN** Select your device
- ES** Seleccione su dispositivo
- PT** Seleccione seu dispositivo





- EN** Onscreen help
- ES** Ayuda en pantalla
- PT** Ajuda na tela

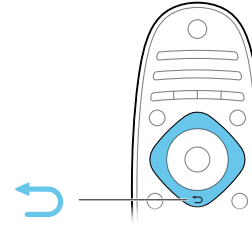




EN Home
Access Home menu

ES Inicio
Acceso a menú de inicio

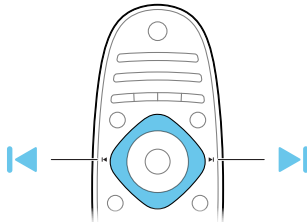
PT Casa
Acessar o menu Início



EN Back
Return to the previous page

ES Atrás
Regrese al menú anterior

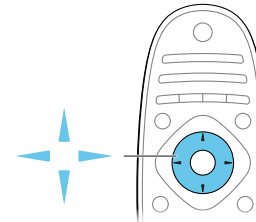
PT Voltar
Retornar para a página anterior



EN Previous / Next
Switch channels or menu pages

ES Anterior / Siguiente
Cambie páginas de canales o menú

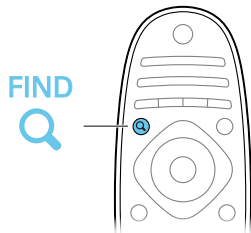
PT Anterior / Próximo
Alterar canais ou páginas do menu



EN Navigation
Navigate menus or make selections

ES Navegación
Navegue por el menú o haga selecciones

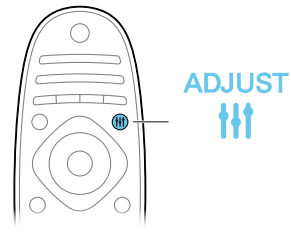
PT Navegação
Navegar pelos menus ou fazer seleções



EN Find
Access channel list

ES Búsqueda
Acceso a channel list

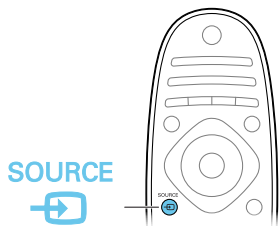
PT Localizar
Acessar a lista de canais



EN Adjust
Adjust TV settings

ES Ajustar
Ajuste la configuración de TV

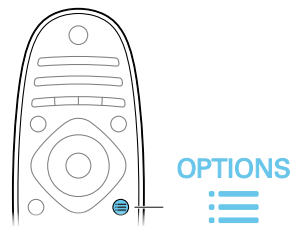
PT Ajustar
Ajustar configurações da TV



EN Source
Access connected devices

ES Fuente
Acceso a dispositivos conectados

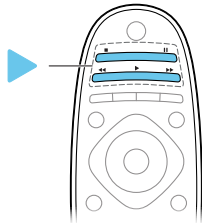
PT Fonte
Acessar dispositivos conectados



EN Options
Access TV options

ES Opciones
Acceda a opciones de TV

PT Opções
Acessar opções da TV



EN Play button
Control video or music
play

ES Botón de reproducción
Control de video o
reproductor de música.

PT Botão play
Controlar vídeo ou
reproduzir música



- EN** Download software updates and a printable user manual from www.philips.com/support.
ES Descargue actualizaciones de software y una versión imprimible del manual del usuario desde www.philips.com/support.
PT Faça o download de atualizações do software e do manual do usuário em www.philips.com/support.



www.philips.com/support



Non-contractual images. / Images non contractuelles. / Außervertragliche Bilder.
All registered and unregistered trademarks are property of their respective owners.
Specifications are subject to change without notice
Trademarks are the property of Koninklijke Philips Electronics N.V. or their respective owners
2011 © Koninklijke Philips Electronics N.V. All rights reserved
www.philips.com

