

请至以下互联网地址注册产品  
以获得完整的信息服务

[www.philips.com/welcome](http://www.philips.com/welcome)

# 快速 使用指南

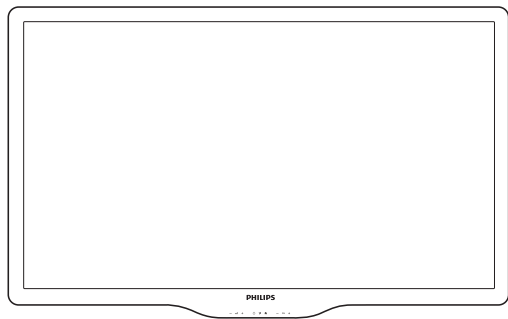


X41G78SV813 2A

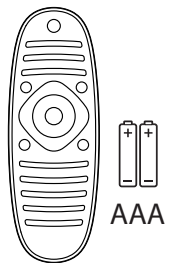
**PHILIPS**



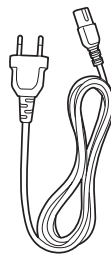
您的产品包装箱内应该含有下列物品：



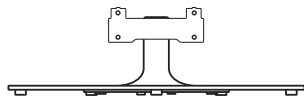
电视机(不含底座)



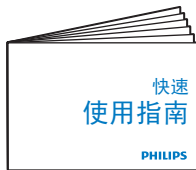
遥控器与2颗AAA电池



电源线



底座



快速使用指南



使用手册

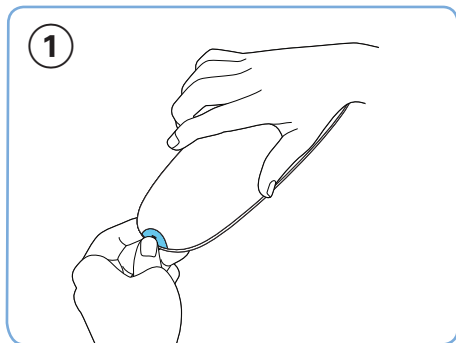


保修卡

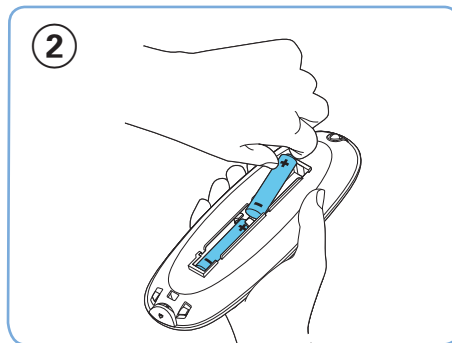
1

## 电池安装方式：

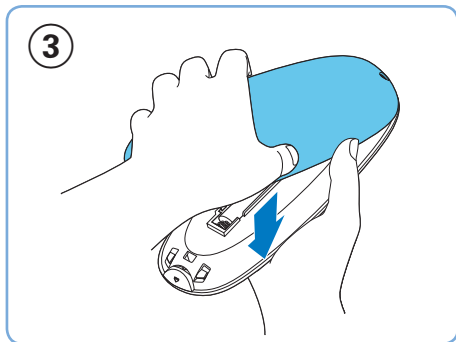
按下遥控器后方的电池盖后打开电池盖



依图所示方向放入2颗AAA电池



盖上电池盖



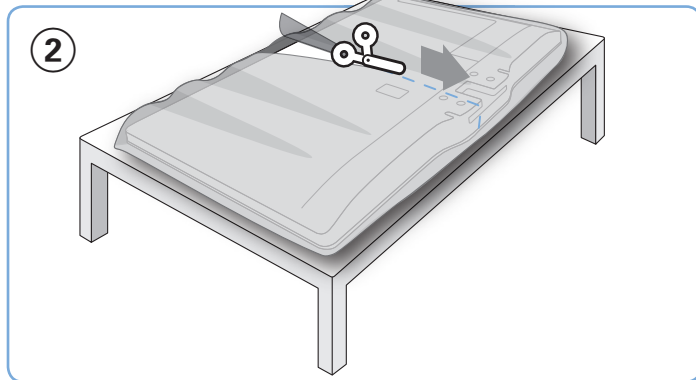
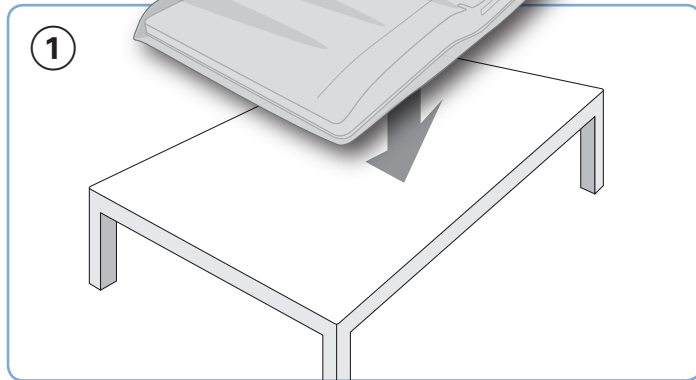
2



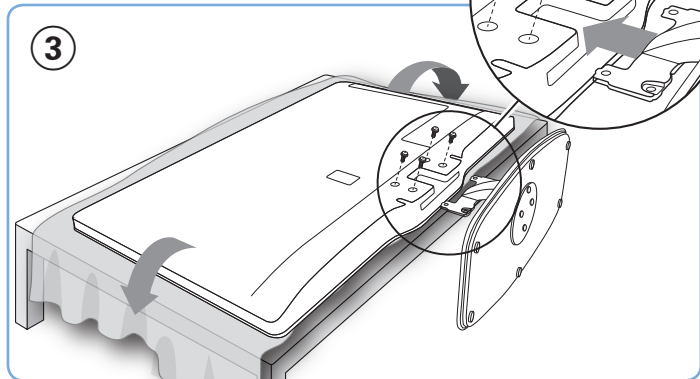
将电视机正面朝下置于平坦处



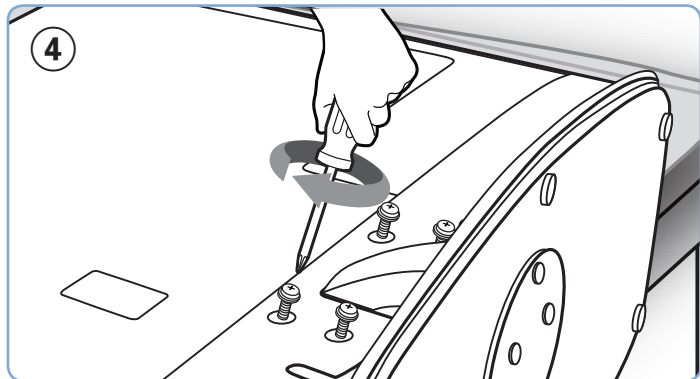
请依图示方向剪开外包装



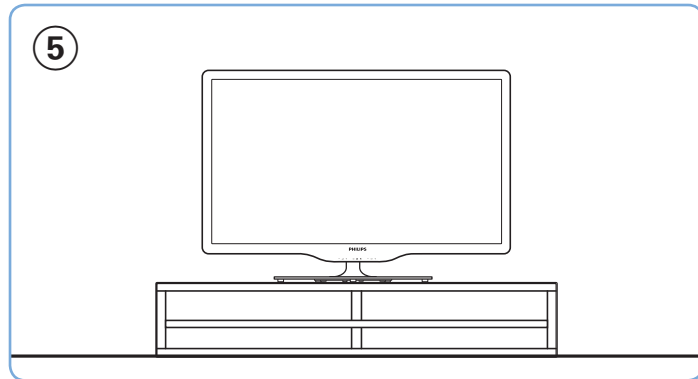
将底座依所示方向装上

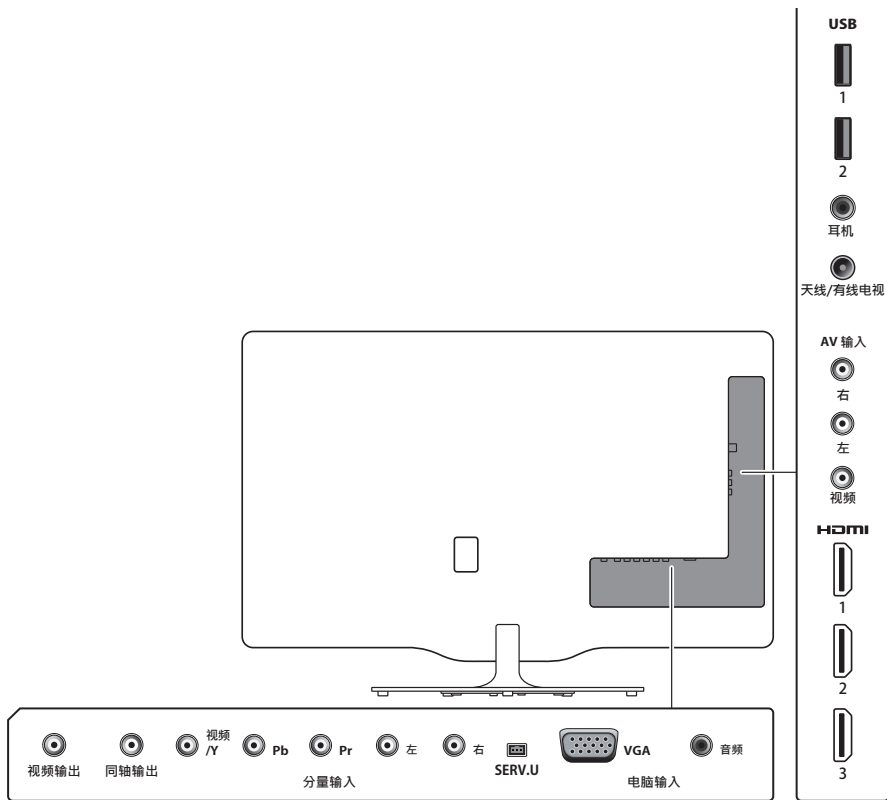


锁上底座螺丝



将电视扶起放好

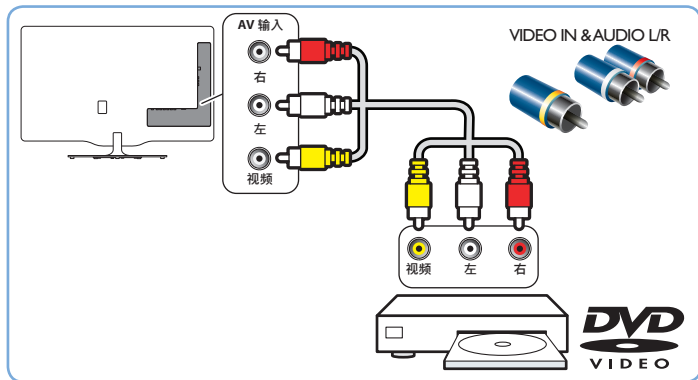
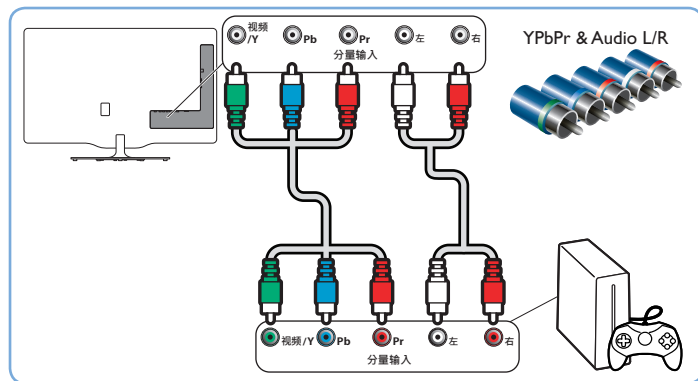
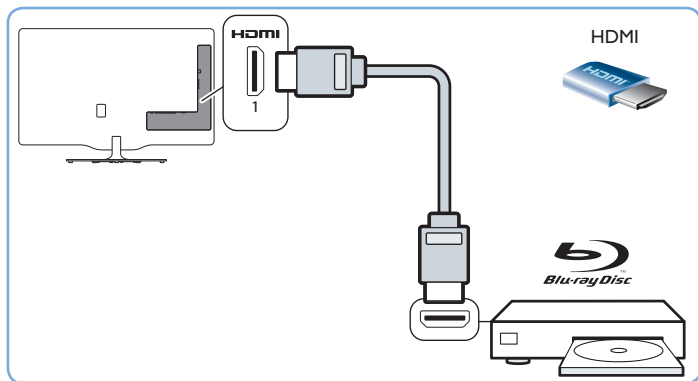




## 建议使用的影像端子接口：

<p>HDMI ★★★★★</p> 	<p>HDMI: 影像画质最佳</p>
<p>YPbPr &amp; AUDIO L/R ★★★★★</p> 	<p>分量端子: 影像画质次佳</p>
<p>VIDEO IN &amp; AUDIO L/R ★</p> 	<p>AV端子: 影像画质普通</p>

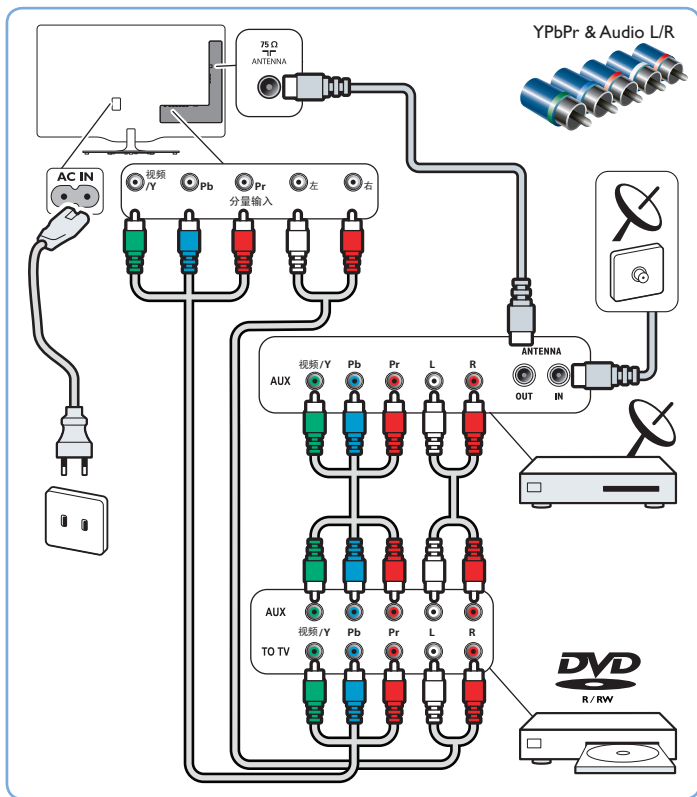
## 影音端子连接方式



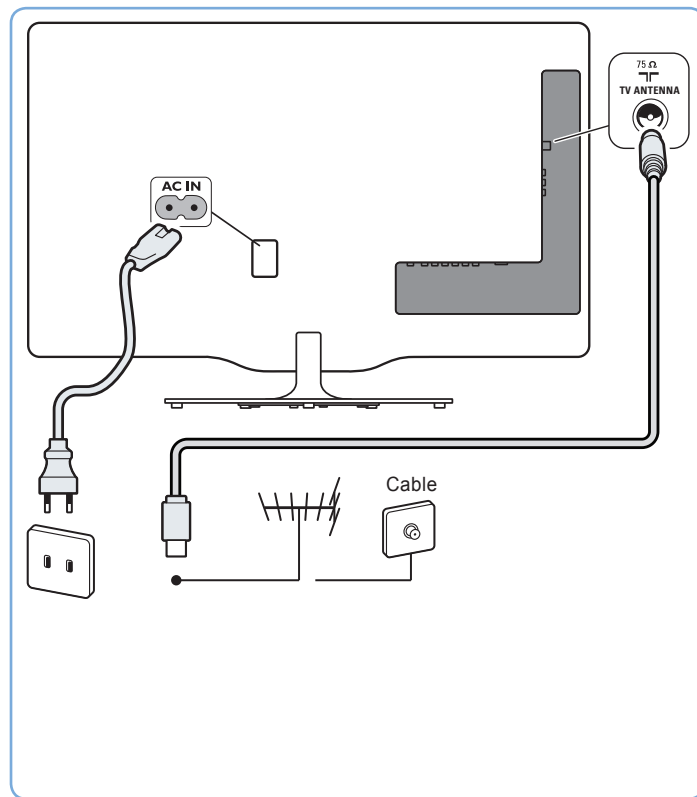
# 4

## 接上电源与电视讯号

透过set top box 连接

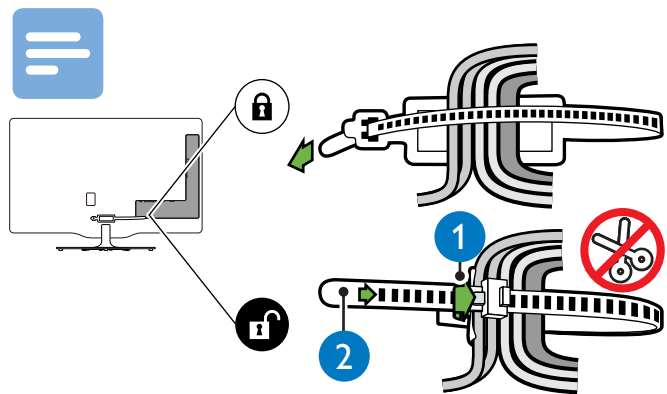
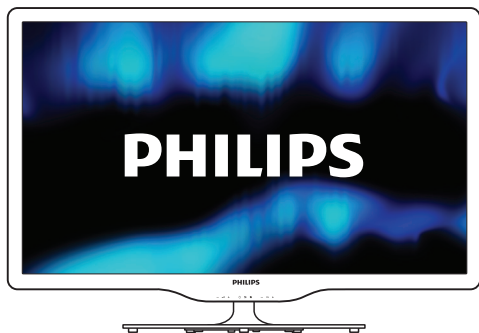
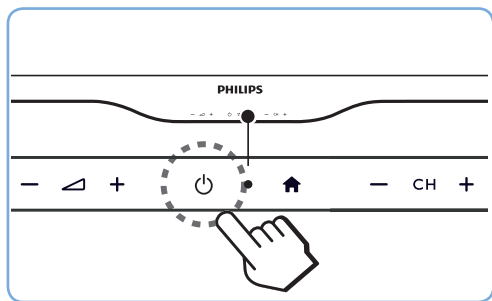


透过天线连接



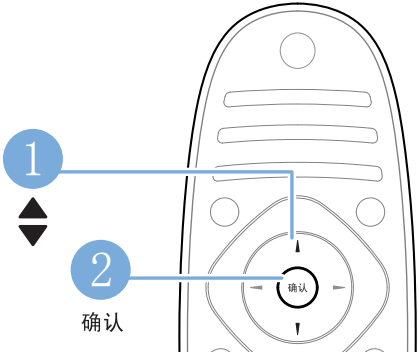


按下电源开关打开电视机



# 5

## 选择语言





更多信息请参考使用手册或PHILIPS网站





[www.philips.com/tv](http://www.philips.com/tv)

所有注册和未注册的商标是其各自所有者的财产。  
规格如有变更，恕不另行通知。

Philips 和 Philips 盾牌图形是皇家飞利浦电子股份有限公司的注册商标，  
其使用需遵循皇家飞利浦电子股份有限公司的许可。

[www.philips.com](http://www.philips.com)