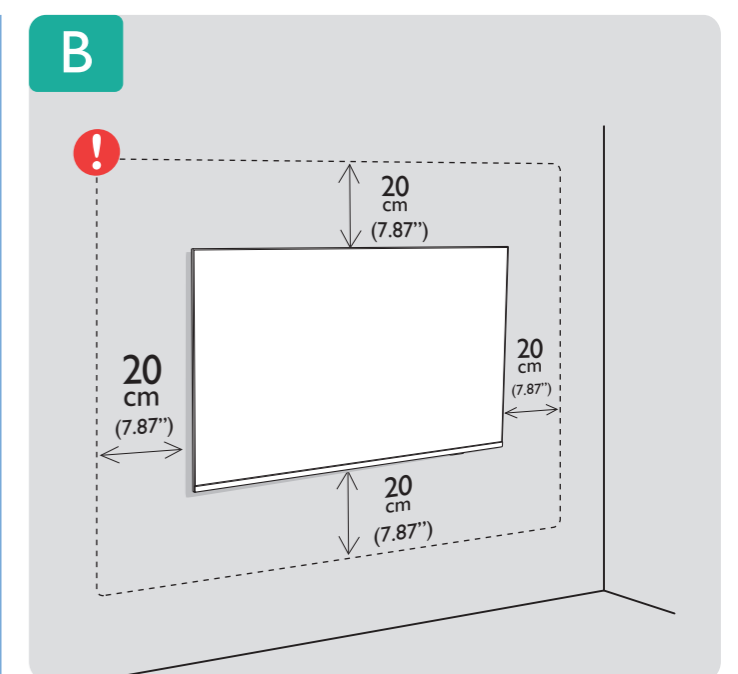
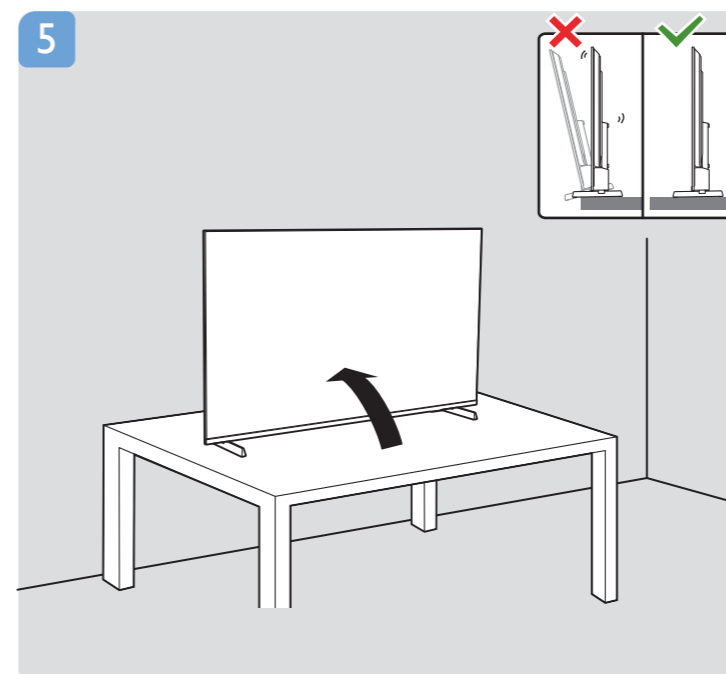
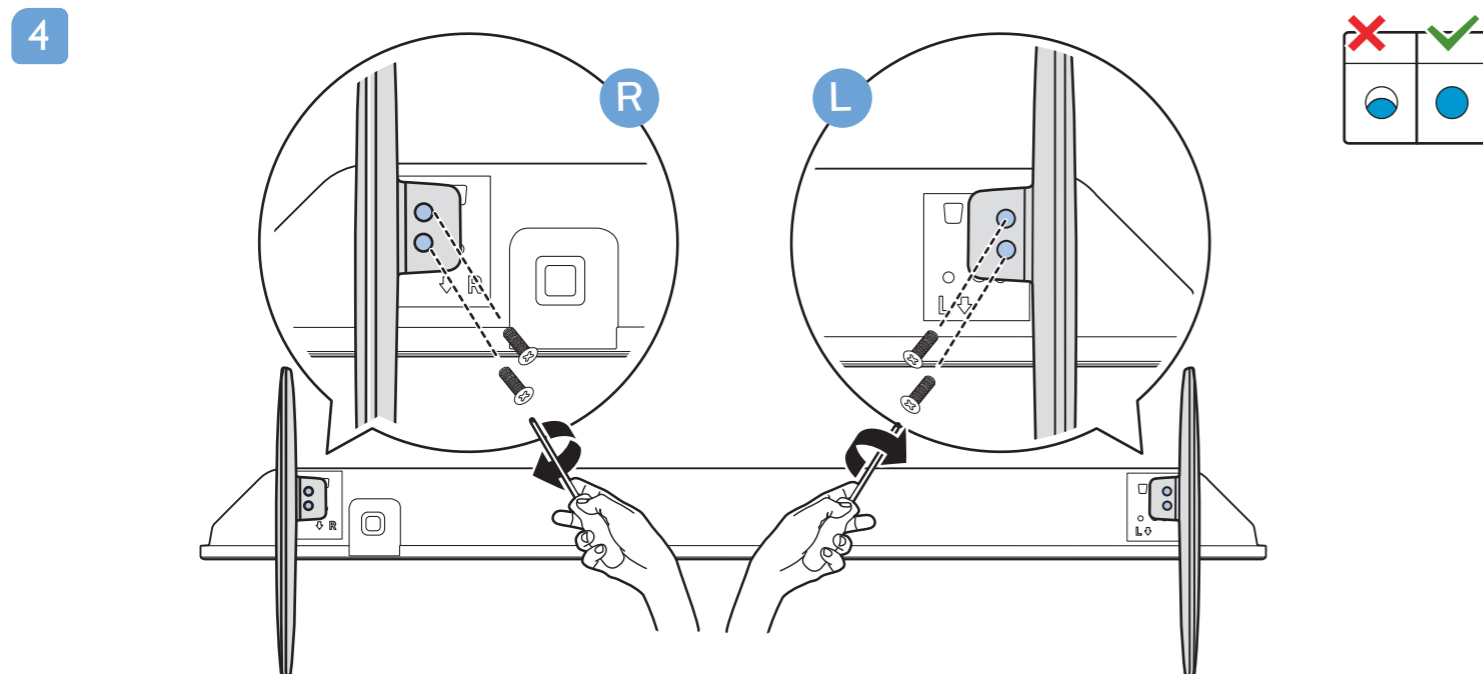
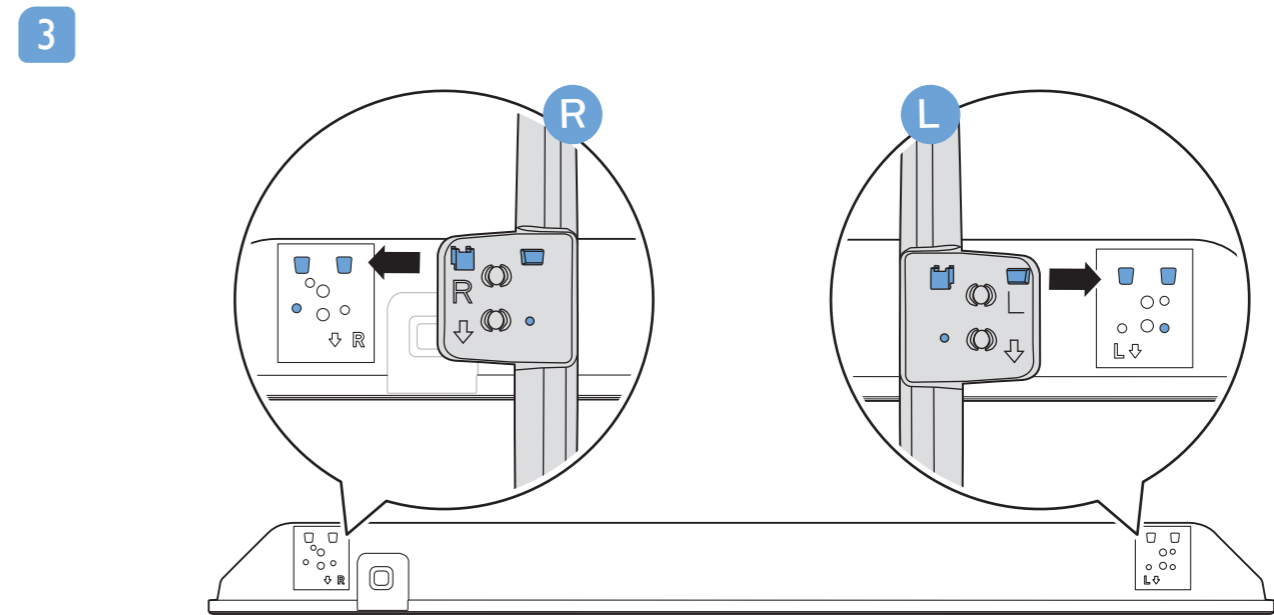
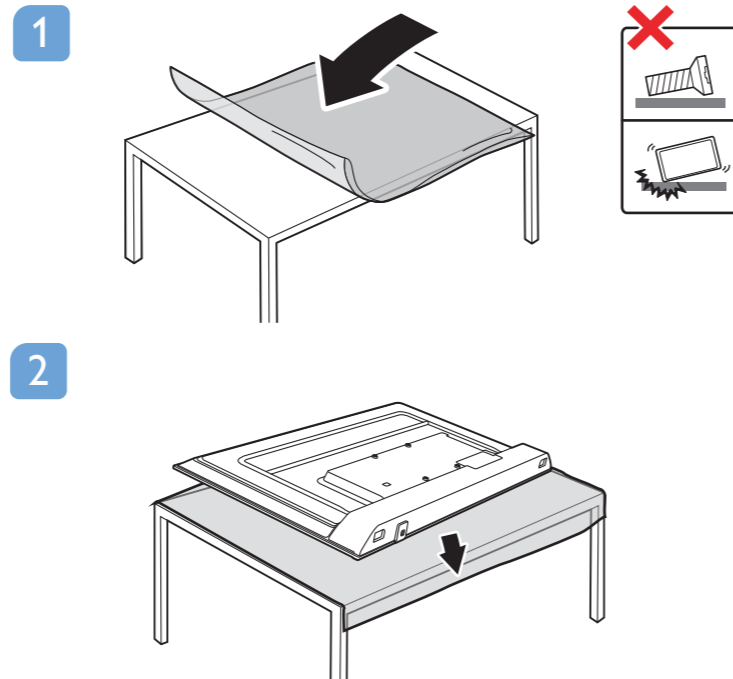
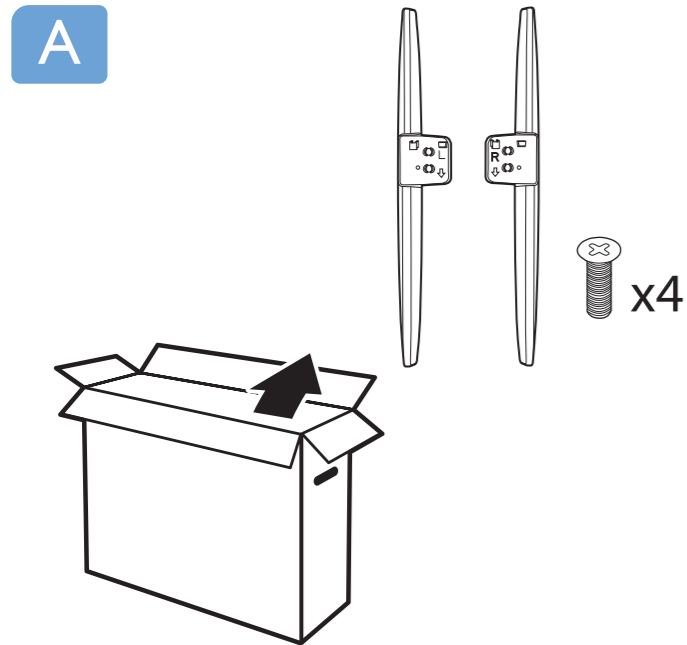
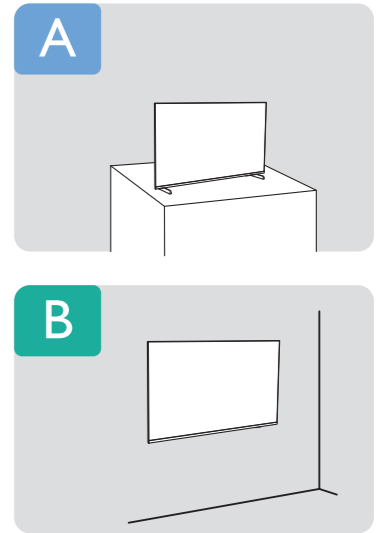
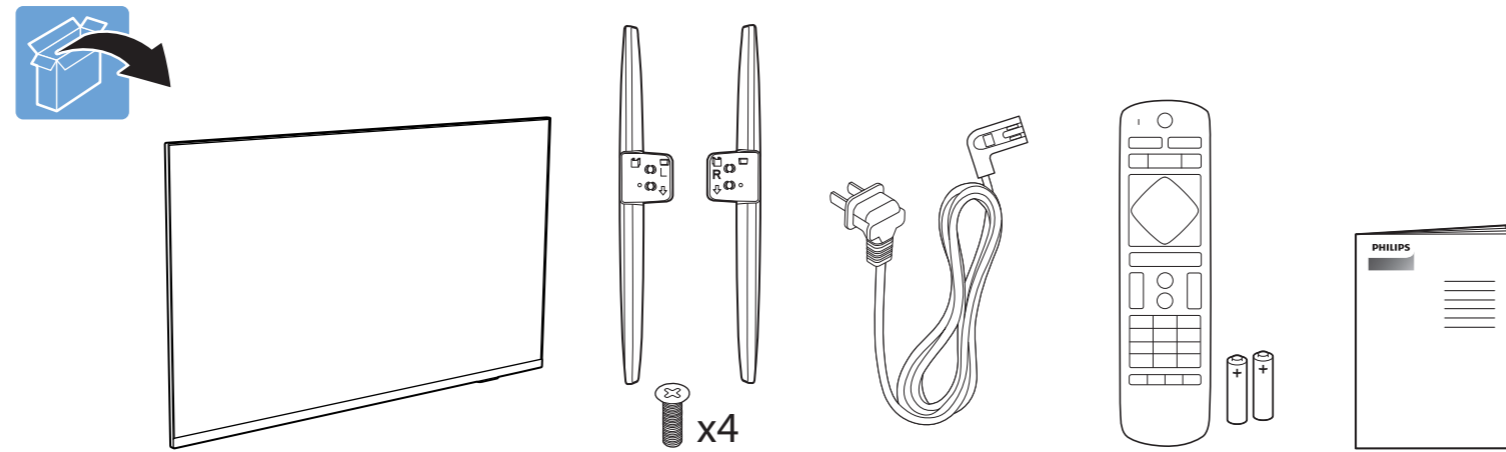
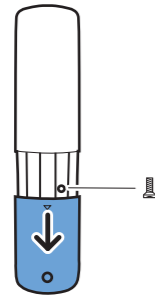


5214U series

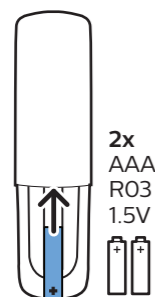




1

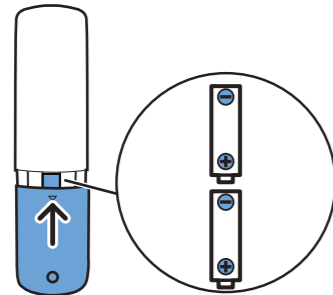


2

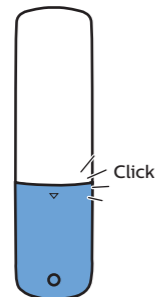


2x  
AAA  
R03  
1.5V

3

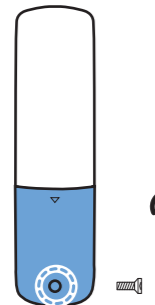


4



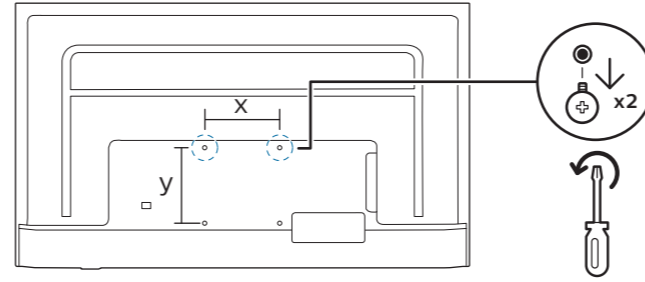
Click

5

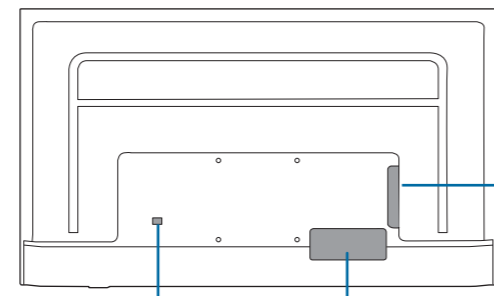
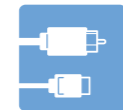


### VESA (x,y)

55" 139 cm  
200 mm x 200 mm (7.87" x 7.87") M6  
L : 14 mm ~ 16 mm (0.55" ~ 0.63")



English Read the safety instructions.  
Español Lea las instrucciones de seguridad.  
Français Lisez les consignes de sécurité.



POWER

NETWORK

TV ANTENNA

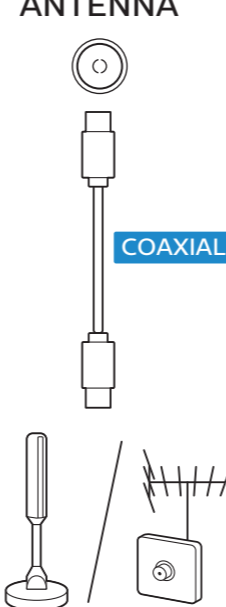
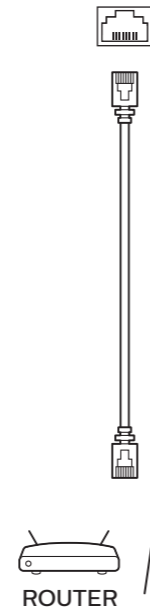
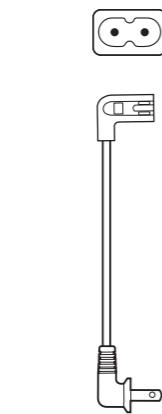
12V DC OUT

DIGITAL AUDIO OUT

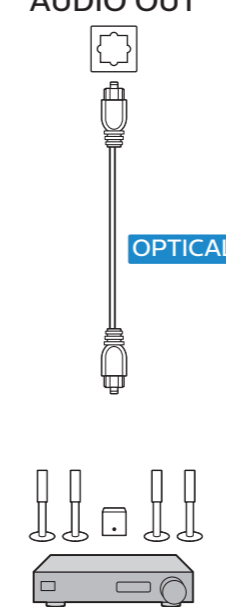
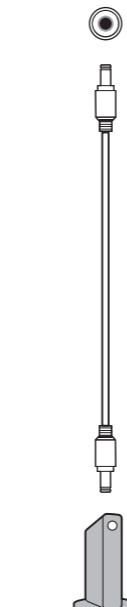
8Ω AUDIO OUT

USB 2

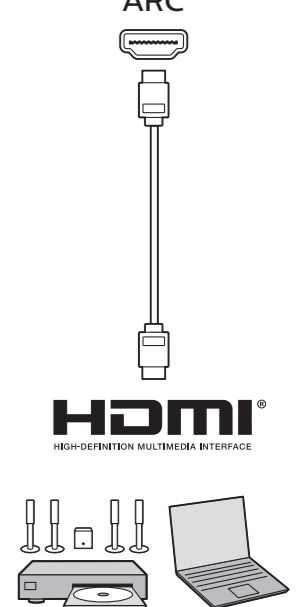
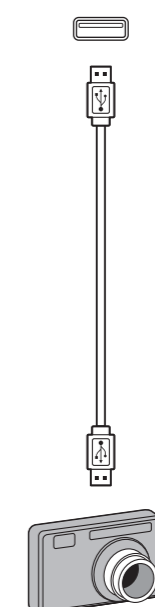
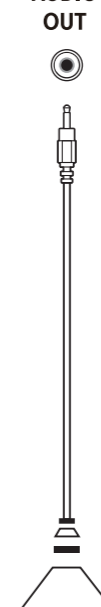
HDMI 3/4 ARC



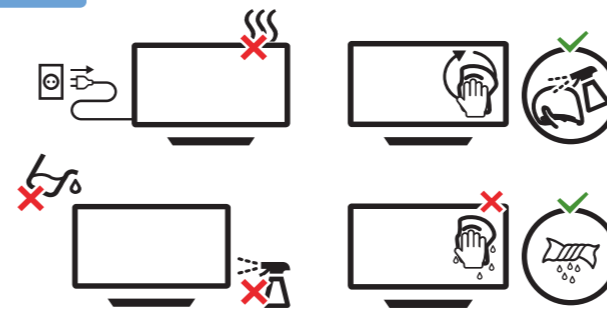
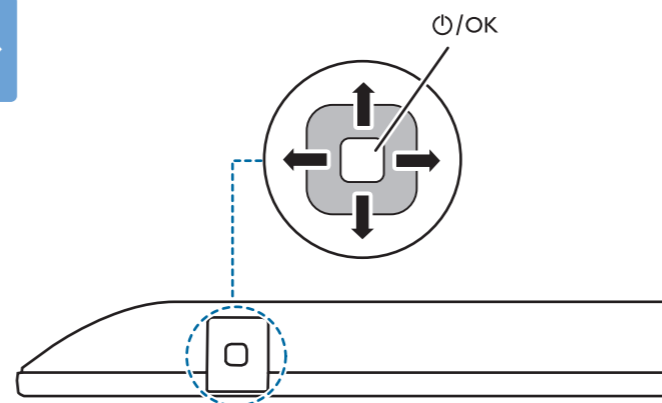
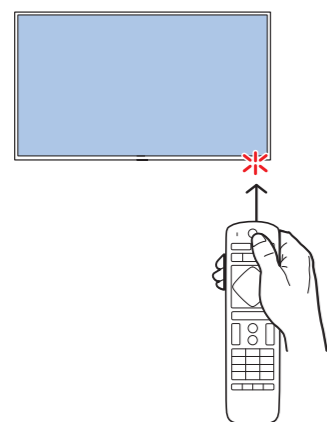
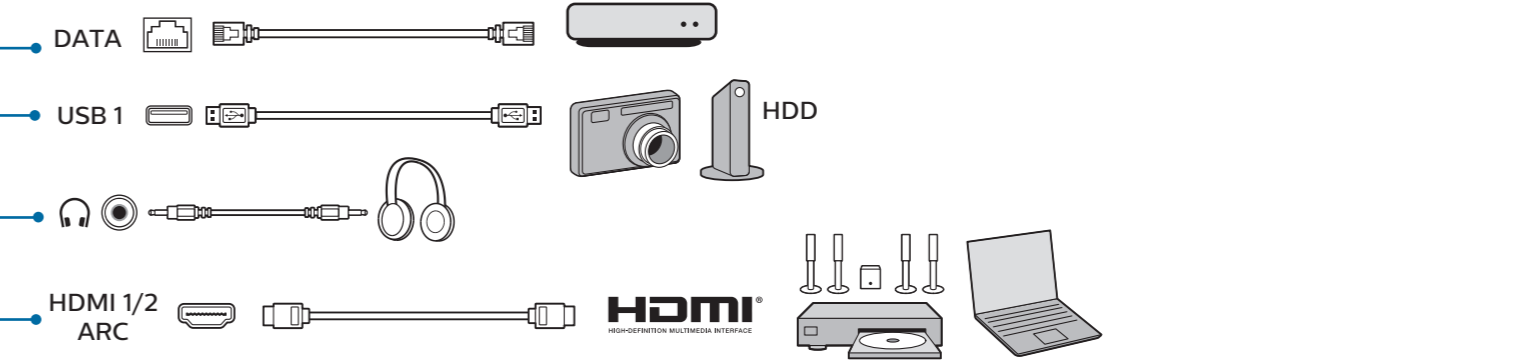
COAXIAL



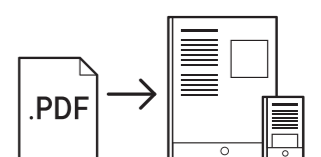
OPTICAL



HDMI  
HIGH-DEFINITION MULTIMEDIA INTERFACE



[www.philips.com/support](http://www.philips.com/support)  
5214U Series  
User Manual



Envision Peripherals Inc.  
47490 Seabridge Drive  
Fremont, CA 94538  
Tel. 510-770-9988  
© 2021 Koninklijke Philips N.V. All rights reserved.  
Philips and the Philips Shield Emblem are registered trademarks of Koninklijke Philips N.V. and are used under license from Koninklijke Philips N.V.