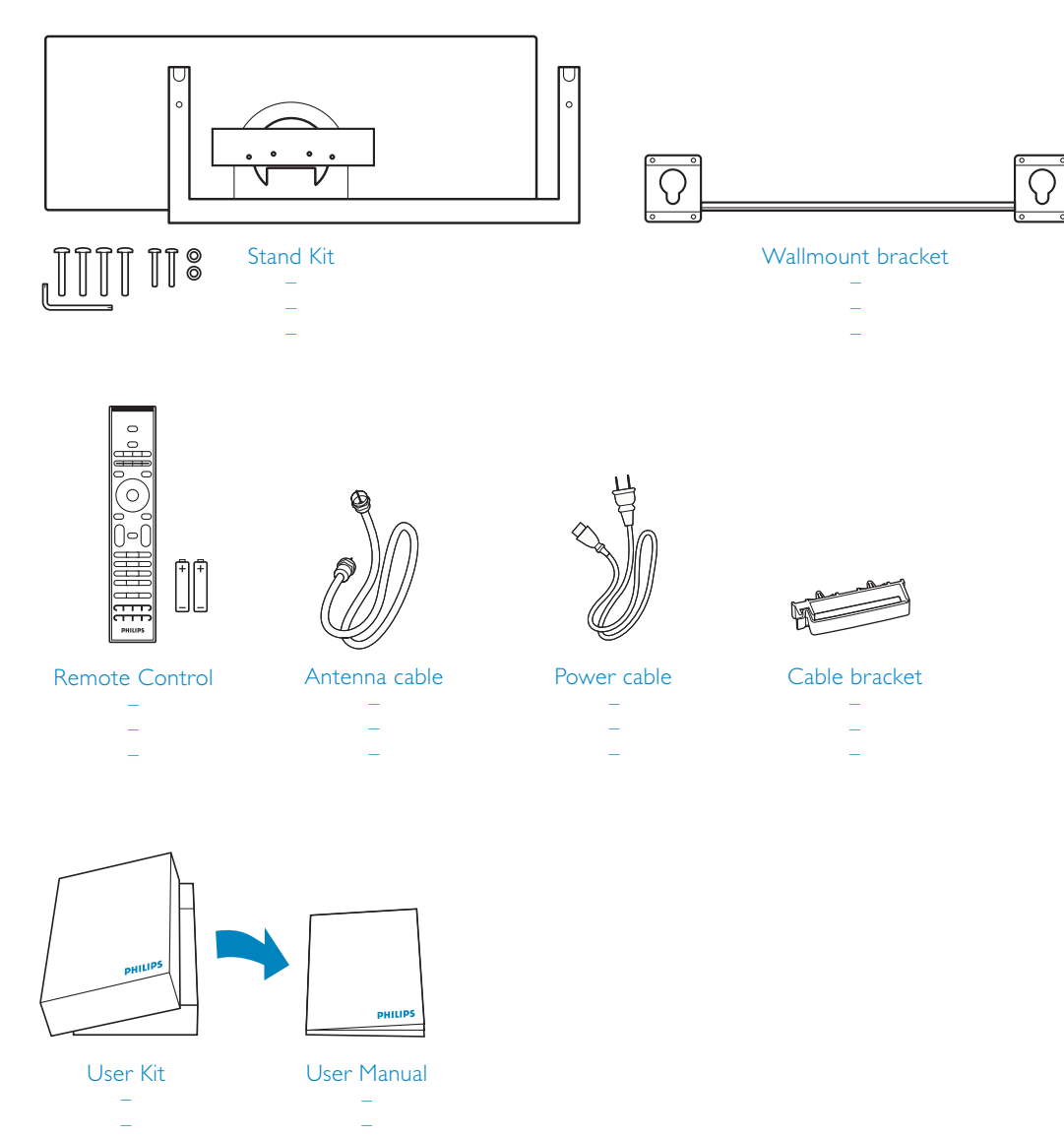


## Start

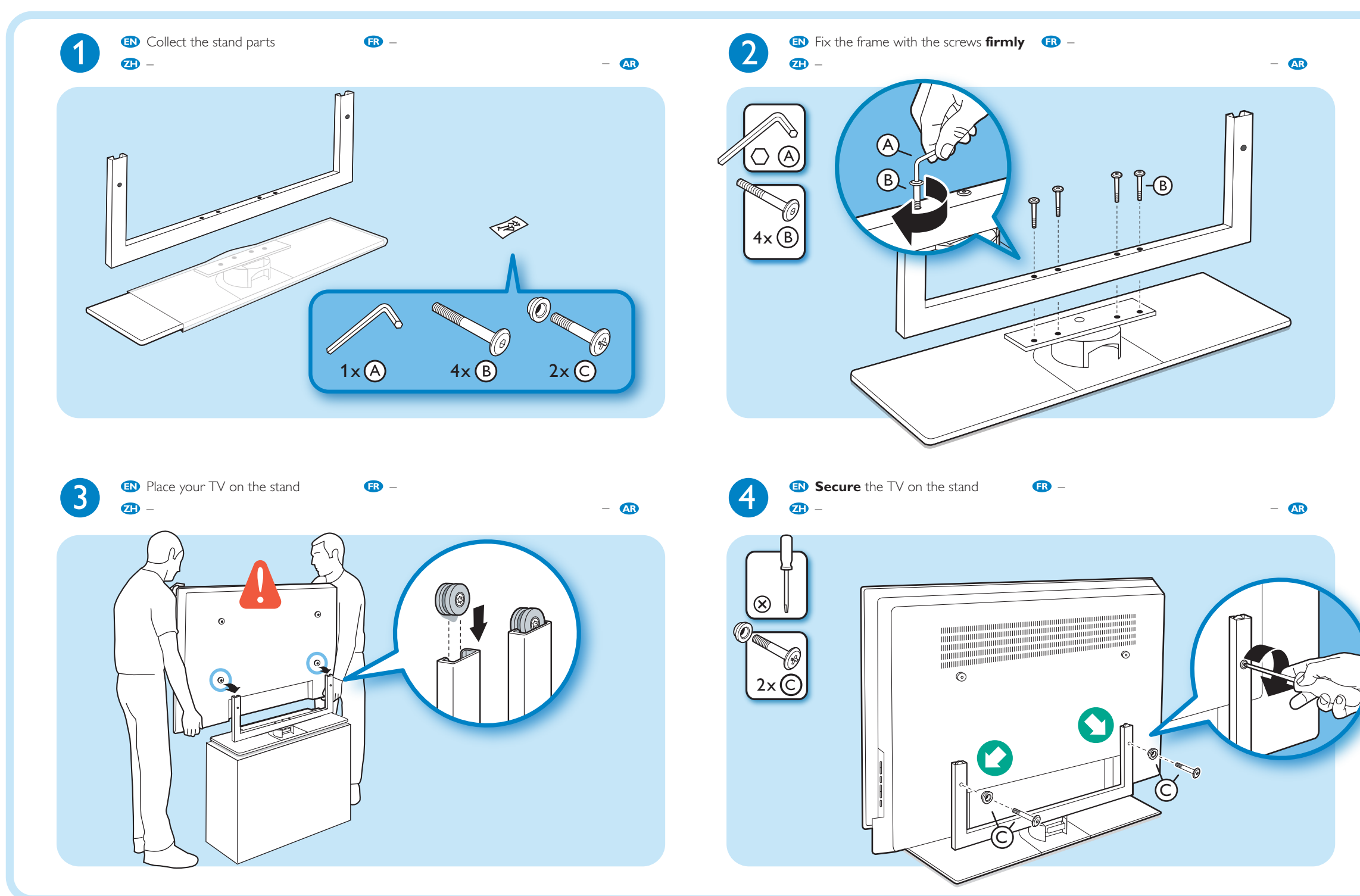
- Installation
- FR
- 21

### What's in the box

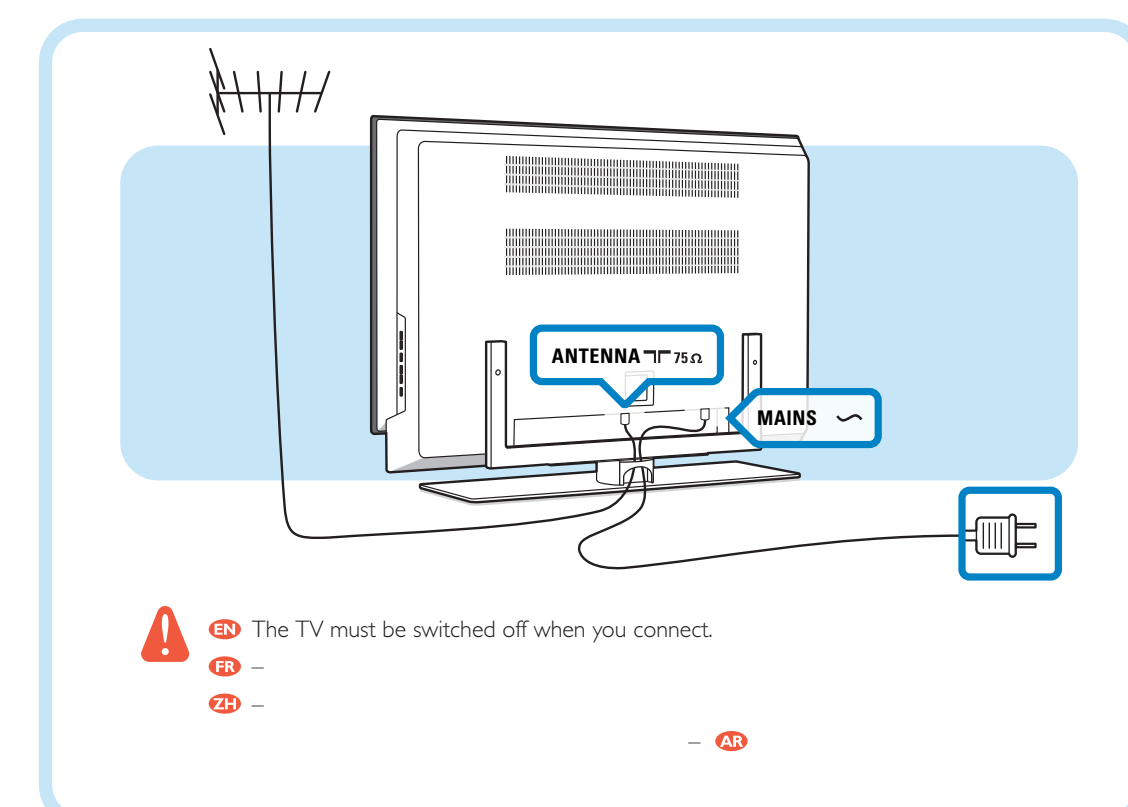


PHILIPS

### 1 Mount the stand



### 2 Power & antenna



### Connect

- More connections
- 21

### Need help?

User Manual  
See the User Manual in the User Kit that came with your TV.  
Online help  
www.philips.com/support  
Contact line  
You will find your local telephone number in the information leaflet in the User Kit.  
Please, have the Model and Product Number ready before you call.  
You can find these numbers on the packaging label or on the back and bottom of your TV.

www.philips.com/support

### Register

Enregistrez  
Return your Warranty Registration Card today or register on www.register.philips.com  
www.register.philips.com

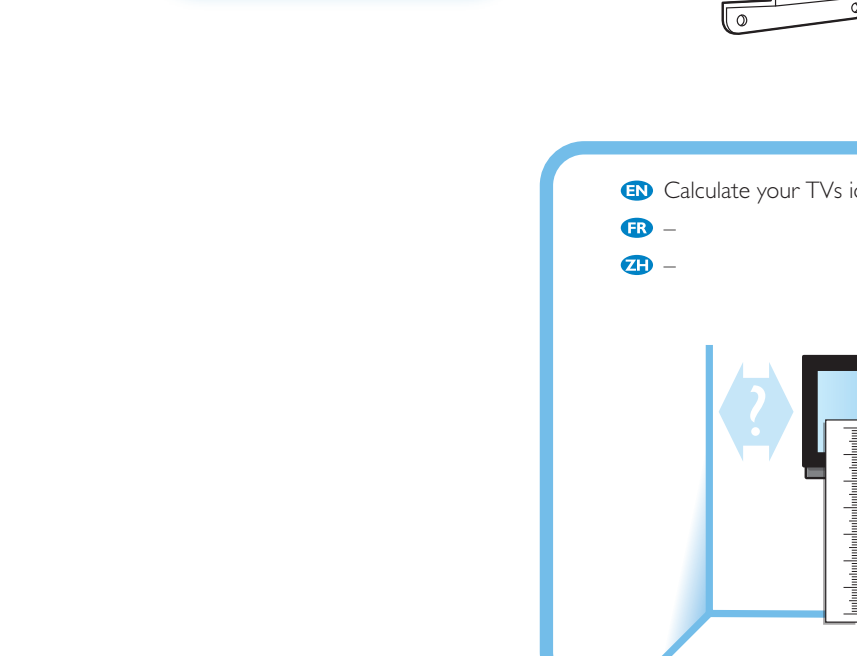
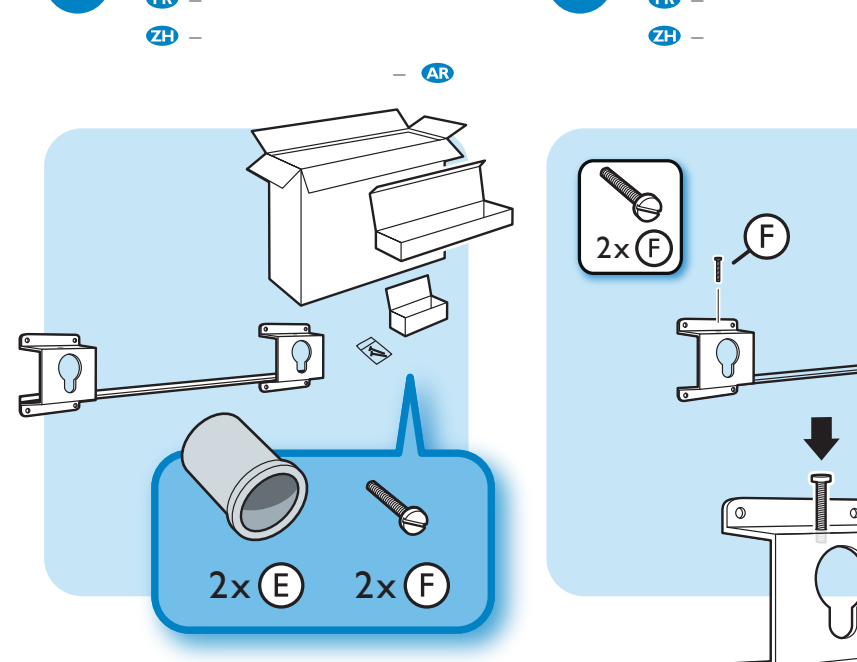
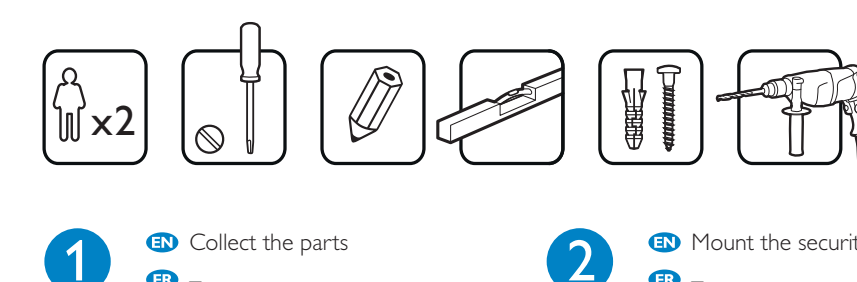
### Wallmounting

Support mural

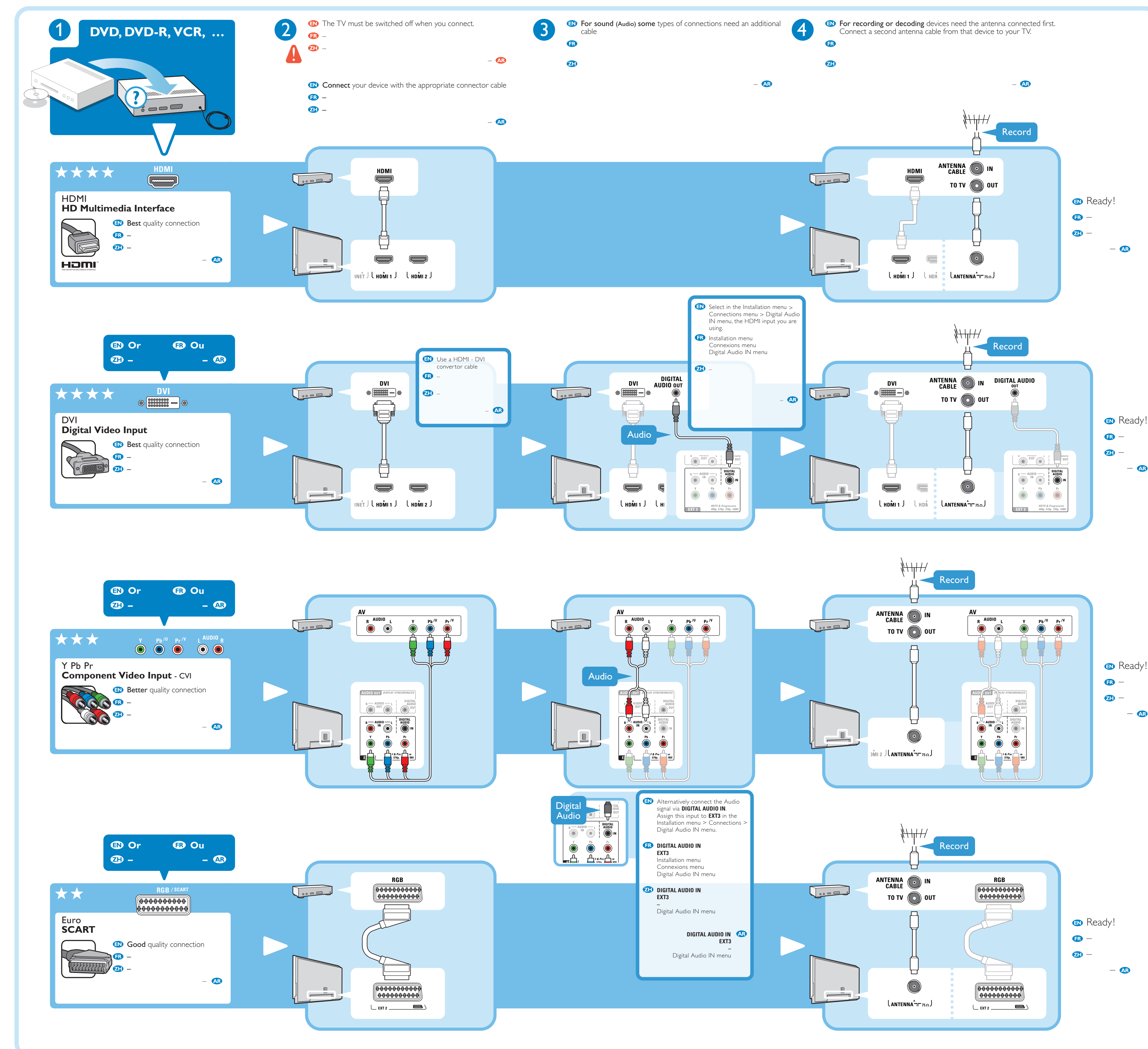
**Caution**  
Wallmounting the TV requires special skills that should only be performed by qualified personnel. Knowledge Philips Electronics is not responsible for improper mounting or mounting that results in accident or injury. Make sure that the wall mount is fixed securely meeting safety standards according to the TV's weight. Keep the TV's ventilation slots free for air circulation.

**Caution**  
Wallmounting the TV requires special skills that should only be performed by qualified personnel. Knowledge Philips Electronics is not responsible for improper mounting or mounting that results in accident or injury. Make sure that the wall mount is fixed securely meeting safety standards according to the TV's weight. Keep the TV's ventilation slots free for air circulation.

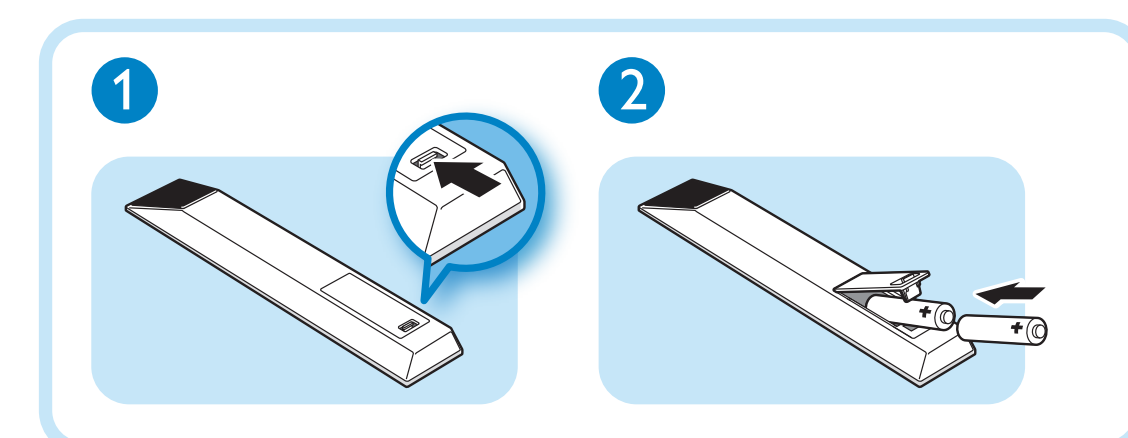
**Caution**  
Wallmounting the TV requires special skills that should only be performed by qualified personnel. Knowledge Philips Electronics is not responsible for improper mounting or mounting that results in accident or injury. Make sure that the wall mount is fixed securely meeting safety standards according to the TV's weight. Keep the TV's ventilation slots free for air circulation.



### 3 What connection is available on your DVD, VCR or other device?



### 4 The remote control



### 5 Switch on

