

PHILIPS

Face

OneBlade

Trim, edge, shave

Original Blade

5-in-1 adjustable comb



QP2724/20



Trim, edge and shave any length of hair

Designed to cut hair, not skin

The Philips OneBlade is a revolutionary new hybrid styler that can trim, shave and create clean lines and edges, on any length of hair. Forget about using multiple steps and tools. OneBlade does it all.

Easy to use

- Blade that doesn't fade easily
- Dual-sided blade: designed for precision and control
- Charge anytime, anywhere
- Long lasting battery

Comfortable shave

- Shave it off

Sharp edges

- Edge it up

Even trim

- 5-in-1 adjustable comb
- Unique OneBlade Technology

Highlights

Unique OneBlade Technology



Philips OneBlade has a revolutionary technology designed for facial grooming. It can shave any length of hair. Its dual protection system – a glide coating combined with rounded tips – makes shaving easier and comfortable. Its shaving technology features a fast-moving cutter (12000x per min) so it's efficient – even on longer hairs.

Trim away



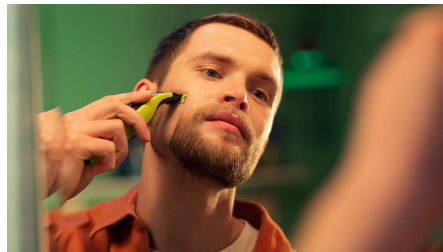
Unique open comb design for an efficient trim without clogging and interrupting your routine – even on long and thick hair.

Edge it up



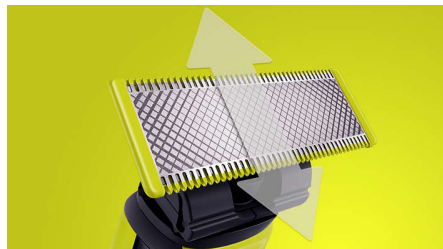
Create precise edges with the dual-sided blade. You can shave in either direction to get great visibility and see every hair that you're cutting. Line up your style in seconds!

Shave it off



OneBlade doesn't shave as close as traditional blade – so your skin stays comfortable. Go against the grain and shave off any length of hair easily.

Dual-sided blade



OneBlade follows the contours of your face, allowing you to easily and comfortably trim and shave all areas. Use the dual-sided blade to style your edges and create clean lines by moving the blade in any direction.

USB-A charging



Can be charged at home or on the road, perfect for your daily routine and for travel.

Blade that doesn't fade easily



Stainless steel blade that lasts up to 4 months of use** to keep that fresh feel. When the eject icon will appear on the blade, the blade performance may no longer be optimal. It is time to consider changing the blade for the best shaving experience

Long lasting battery



Rechargeable NiMH battery delivers 45 minutes of constant shaving power after an 8 hour charge.

Specifications

Trimming & shaving performance

Shaving system: Contour-following technology, Dual protection system, Original Blade

Trimming system: Contour-following technology, Original Blade

Accessories

Maintenance: Protection cap

Comb: 5-in-1 adjustable comb

Power

Battery type: Ni-MH

Automatic voltage: 5 V

Charging: 8 hours full charge

Run time: 45 minutes

Max power consumption: 0.5 W

Adaptor type: USB-A

USB-A

Design

Color: Lime green, charcoal grey

Handle: Ergonomic grip & handling

Consumer Trade Item

Height: 20

Width: 10

Length: 3.7

Net Weight: 0.1418

Gross Weight: 0.1808

GTIN: 8720689013888

Country of origin: ID

Outer Carton

Height: 21.5

Width: 10.9

Length: 15.7

Net Weight: 0.5672

Gross Weight: 0.7862

GTIN: 18720689013885

Service

Replacement head: Replace every 4 months**, QP210, QP220, QP230, QP610, QP620, QP410, QP420

2-year warranty

Other

Height: 109.3

Width: 80

Length: 120

GTIN: 68720689013880

Ease of use

Wet and dry use

Rechargeable

USB-A Charging: Power adapter not included

