

# PHILIPS

## Air Styler

### 3000 Series

3 attachments

Ionic care

Keratin Ceramic coating



BHA305/03



## Easy hairstyling with ionic care with Keratin ceramic brushes

Dry & style at once – the Philips Air Styler 3000 allows you to create beautiful natural styles, whilst providing extra care and shine. The 3 attachments are suitable for both long and short hair, so you can enjoy easy styling.

#### Easy to use

- Cool air setting for gentle drying

#### Beautifully styled hair

- 800W styling power for salon-like results
- Three flexible heat and speed settings for easy control
- 38 mm ThermoBrush for smooth styles and waves
- 30 mm retractable bristle brush for defined waves
- Narrow concentrator for focused airflow

#### Care and protect

- Care setting for better protection while drying and styling
- More Care with ion conditioning for shiny, frizz-free hair
- Protective ceramic coating with Keratin infusion

# Highlights

## Care setting



The 'Care' setting ensures the optimum drying temperature and guards against overheating. Hair still dries fast, with the same powerful airflow but at a constant, caring temperature.

## 800W



The Air Styler with 800W airflow for a gentle drying and styling. Achieve salon-like results every day.

## Cool air setting



The Cool air setting uses low heat to gently dry your hair. It works especially well with fine, dry or damaged hair.

## Three flexible settings



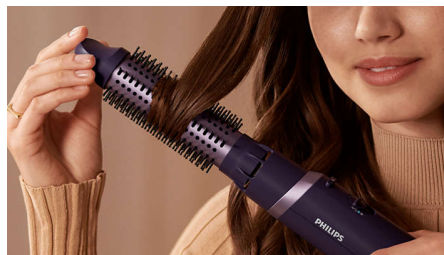
Enjoy the combined three heat and two speed settings which will create the perfect end result. You can choose between a low and high speed setting with 3 corresponding heat settings; Cool, Care and High. The flexible settings ensure a powerful airflow with a caring temperature for a precise and tailored styling.

## 38 mm ThermoBrush



The ThermoBrush has an extra wide diameter of 38 mm. The width of the barrel makes it the perfect styling tool for creating smooth styles and waves.

## Retractable bristle brush



The 30 mm brush with retractable bristles is designed for the easy styling. Turn the tip of the brush and slide it out for defined waves.

## Narrow concentrator



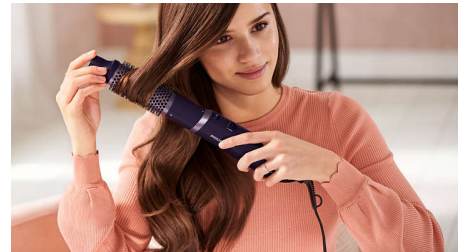
Use the narrow concentrator for the focused airflow for precise styling or touch-ups.

## Ionic Care



Ionic conditioning enables anti-static drying. Charged negative ions eliminate static hair, condition the hair and smooth down the hair cuticles to intensify the hair's shine and glossiness. The result is smooth and frizz-free hair that shines beautifully.

## Keratin ceramic coating



The bristles with keratin-infused ceramic coating glide smoothly through your hair for naturally straight and shiny look.



# Specifications

## Technical specifications

Cord length: 1.8 m

Number of heat settings: 3 heat with 2 speed

## Ease of use

Storage hook

Swivel cord

## Power

Voltage: 220-240V

Wattage: 800W

## Attachments

Nozzle: For a focused airflow

38 mm ThermoBrush: For smooth styles and waves

Retractable 30mm bristle brush: For tangle free waves & curls

## Service

2-year worldwide warranty

## Caring technologies

Ion technology

Keratin infused coating

Caring temperature setting

