

Philips  
Professional LCD TV

**42" PrimeSuite**

LCD DVB-T/C MPEG 2/4

**42HFL4373D**



## The ideal TV for premium or interactive use

### Philips Hotel LCD TV

With this energy efficient Hotel LCD TV, you will enjoy all the benefits of interactive television and premium hotel features. Simply link our TV to the system of your choice for the best viewing experience and cost efficient solution.

#### **Advanced hotel features and future proof**

- Full HD LCD display, with a 1920 x 1080p resolution
- Serial Xpress Protocol for interactive systems
- VSecure for digital content protection in hotels
- Instant Initial Cloning for quick installation
- Integrated Connectivity Panel
- MyChoice compatibility for recurring revenues

#### **Differentiating guest experience**

- Hotel Scenea for a tailored info and start-up channel
- Theme TV for easy location of guests' own national channels
- Advanced EPG and channel list

#### **Sustainable and safe**

- Low power consumption
- Green Button allows guest to save even more energy
- Eco-friendly design and flame-retardant housing

**PHILIPS**  
sense and simplicity

# Highlights

## Full HD LCD display 1920 x 1080p



The Full HD screen has the widescreen resolution of 1920 x 1080p. This is the highest resolution of HD sources for the best possible picture quality. It is fully future-proof as it supports 1080p signals from all sources, including the most recent sources such as Blu-ray and advanced HD game consoles. The signal processing is extensively upgraded to support this much higher signal quality and resolution. It produces brilliant flicker-free progressive scan pictures with superb brightness and colours.

## Serial Xpress Protocol (SXP)

The TV can be connected to external decoders and set-top boxes of all major interactive system providers, through the Serial Xpress Protocol (SXP).

## Instant Initial Cloning

For initial TV installations, Instant Initial Cloning will save you 3-5 minutes per TV simply because the USB files are automatically read and copied to the TV without having to use the TV menu. Instant Initial Cloning allows you to significantly reduce installation time and cost.

## VSecure

To show HD premium content to the guest there is a need for strict content security precautions from the content industry. Philips has developed a total solution for HD content security in hotels, consisting of VSecure for HD content protection and NexGuard for HD forensic watermarking.

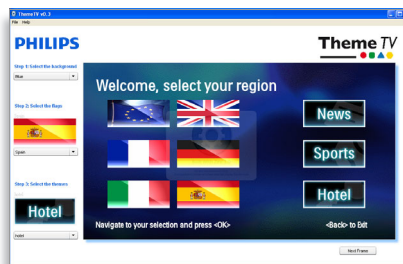
## Hotel Scenea

Hotel Scenea allows you to select and store images on the TV that can be displayed as a start-up or info channel.

## Integrated Connectivity Panel

The Integrated Connectivity Panel allows your guests to seamlessly connect their personal devices to your TV without the need for an external Connectivity Panel.

## Theme TV



Theme TV offers an advanced user interface that enables your guests to navigate the guest menu to find their own country's channels, news and hotel information easily without the need of an interactive entertainment system.

## MyChoice compatible

MyChoice offers a simple and low-cost way to offer your guests premium TV channels. At the same time it delivers an additional revenue stream which allows you to recover your initial TV investment.

## Green Button

With the Green Button guests have the option to save even more energy on the TV by opting for a higher backlight dimming or by switching off the screen when listening to radio. Another way to reduce a hotel's operating costs while involving guests directly.

## Eco-friendly design

Sustainability is integral to the way Philips does business. Philips TVs are designed and produced according to our EcoDesign principles aimed at minimising overall environmental impact, through lower power consumption, removal of hazardous substances, lower weight, more efficient packaging and better recyclability. Philips TVs also have a special housing of flame-retardant material. Independent tests carried out by emergency fire services have shown that whereas TVs can sometimes intensify fires caused by external sources, Philips TVs will not contribute to a fire.

## Advanced EPG and channel list

The attractive EPG and channel list include intuitive buttons with clear guiding graphics to easily locate your favourite channels.



# Specifications

## Picture/Display

- Diagonal screen size: 42 inch / 107 cm
- Aspect ratio: Widescreen
- Display screen type: LCD WXGA+ Active Matrix TFT
- Panel resolution: 1920 x 1080p
- Brightness: 500 cd/m<sup>2</sup>
- Response time (typical): 5 ms
- Picture enhancement: 3/2 - 2/2 motion pull down, 3D Combfilter, Active Control, Colour Enhancement, Colour Transient Improvement, Digital Noise Reduction, Luminance Transient Improver, Progressive scan, Sharpness Adjustment, 3D MA deinterlacing, Automatic skin tone correction, Dynamic contrast enhancement, 1080p 24/25/30 Hz processing, 1080p 50/60 Hz processing, Pixel Plus HD
- Dynamic screen contrast: 50,000:1
- Screen enhancement: Anti-Reflection coated screen
- Viewing angle: 178° (H)/178° (V)
- Colour cabinet: High gloss black deco front with black cabinet
- Peak Luminance ratio: 74 %

## Supported Display Resolution

### • Video formats

Resolution	Refresh rate
480i	60 Hz
480p	60 Hz
576i	50 Hz
576p	50 Hz
1080i	50, 60 Hz
720p	50, 60 Hz
1080p	24, 50, 60 Hz
1080p	24, 25, 30, 50, 60 Hz

### • Computer formats

Resolution	Refresh rate
640 x 480	60 Hz
800 x 600	60 Hz
1024 x 768	60 Hz
1280 x 1024	60 Hz
1280 x 720	60 Hz
1280 x 768	60 Hz
1360 x 768	60 Hz

## Tuner/Reception/Transmission

- Aerial Input: 75 ohm coaxial (IEC75)
- Number of Pre-set Channels: 999

- Tuner bands: Hyperband, S-Channel, UHF, VHF
- TV system: PAL I, PAL B/G, SECAM B/G, SECAM L/L', DVB COFDM 2K/8K
- Video Playback: PAL, SECAM, NTSC
- Digital TV: DVB-C MPEG4, DVB-T MPEG4

## Sound

- Output power (RMS): 2 x 10 W
- Sound System: Nicam Stereo
- Sound Enhancement: Auto Volume Leveller, Incredible Surround, Smart Sound

## Loudspeakers

- Built-in speakers: 2

## Connectivity

- Number of Scarts: 1
- Number of HDMI connections: 4
- Ext 1 Scart: Audio L/R, RGB, CVBS in
- Front/Side connections: USB 2.0, HDMI v1.3
- HDMI 1: HDMI v1.3
- EasyLink (HDMI-CEC): One touch play, System standby
- Other connections: S/PDIF out (coaxial), PC-in VGA + Audio L/R in, Bathroom speaker out, Common Interface Plus (CI+)
- Connectivity Enhancements: Serial Xpress interface, Fast Infrared loop through, Power on scart, USB2.0

## Convenience

- Ease of Installation: Plug and Play, Advanced Hotel Mode, Automatic Tuning System (ATS), Fine Tuning, PLL Digital Tuning, Automatic Channel Install (ACI), Programme Name, Auto Programme Naming, Autostore, Cloning of TV settings via USB, Installation menu locking, Security menu access, Keyboard lock-out
- Ease of Use: Auto Volume Leveller (AVL), 1 channel list analogue/digital, On-Screen Display, Programme List, Side Control, Graphical User Interface
- Comfort: Hotel Guest features, Auto power on, Green/Fast startup, Welcome message, Message indicator, Switch on channel, Volume limitation, Sleep timer
- Interactive hotel features: Connectivity panel compatible, Block automatic channel update, Block over-the-air SW download, Vsecure, MyChoice,

- SmartInstall, ThemeTV
- Prison mode: Txt, MHEG, USB, EPG, Sub block
- Teletext: 1000-page Hypertext
- Teletext enhancements: Fast text, Programme information Line
- Electronic Programme Guide: 8-day Electronic Programme Guide, Now + Next EPG
- Screen Format Adjustments: Movie expand 16:9, Widescreen, Super Zoom, Auto Format
- Remote control type: 22AV1104A/10 (RC6)
- Remote Control: low battery detection, battery anti-theft protection
- Firmware upgradeable: Firmware upgradeable via USB, Firmware upgradeable via RF
- Other convenience: Kensington lock

## Healthcare

- Control: Multi remote control
- Convenience: Headphone out, Independent main speaker mute
- Safety: Double isolation Class II

## Multimedia Applications

- Multimedia connections: USB
- Playback Formats: MP3, JPEG Still pictures, Slideshow files (.alb)
- Video Playback Formats: H264/MPEG-4 AVC

## Power

- Mains power: 220-240 V, 50/60 Hz
- Power consumption (typical): 100 W
- Standby power consumption: 0.22 W
- Ambient temperature: 5°C to 40°C
- Presence of lead: Yes\*
- Annual energy consumption: 142 kWh
- Mercury content: 56 mg

## Green Specifications

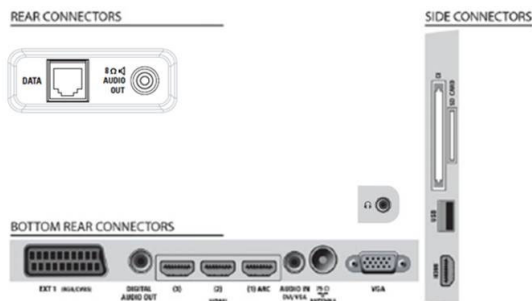
- Safety: Flame-retardant housing
- Low Power Standby
- SmartPower Eco

## Dimensions

- Set dimensions (W x H x D): 1025 x 636 x 83 mm
- Set dimensions with stand (W x H x D): 1025 x 687 x 360 mm
- Box dimensions (W x H x D): 1268 x 730 x 246 mm
- Product weight: 16 kg
- Product weight (+stand): 19 kg
- VESA wall mount compatible: 200 x 200 mm
- Weight incl. Packaging: 22 kg

## Accessories

- Included accessories: Remote Control, Batteries for remote control, Power cord, Warranty Leaflet, Wall mounting bracket
- Optional accessories: Wall mount (tilt) 22AV3200/10, Set up remote 22AV8573/00, Tabletop Stand with Swivel



Issue date 2012-10-12

Version: 3.0.8

12 NC: 8670 000 75941  
EAN: 87 12581 60241 3

© 2012 Koninklijke Philips Electronics N.V.  
All Rights reserved.

Specifications are subject to change without notice.  
Trademarks are the property of Koninklijke Philips Electronics N.V. or their respective owners.

[www.philips.com](http://www.philips.com)

\* Energy consumption in kWh per year based on the power consumption of the television operating 4 hours per day for 365 days. The actual energy consumption will depend on how the television is used.  
\* This television contains lead only in certain parts or components where no technology alternatives exist in accordance with existing exemption clauses under the RoHS Directive.  
\* Typical on-mode power consumption measured according to IEC62087 Ed 2.