

PHILIPS

Airstyler

7000 Series

Rotating Volumebrush

Ionic & Tourmaline

2 attachments



BHA710/13



Versatile styling for smooth and shiny hair

Philips Rotating Volumebrush with 2 attachments

Use Philips Dynamic Volumebrush to create different styles, while keeping hair smooth and shiny. Its 50mm rotating natural bristle brush adds volume and movement while the retractable brush creates defined waves without tangles.

Protects your style, cares for your hair

- 50mm brush for smoother, shinier results
- Care+ setting for better protection while drying and styling

Ultimate shine and condition

- Ionic conditioning prevents frizz, maximizes shine
- Tourmaline ceramic adds more shine to your hair

Volume, body and waves without tangles

- 1000W power for beautiful results
- 50mm round brush adds volume and movement
- 30mm retractable brush for tangle free styling
- The brushes can be rotated in both directions

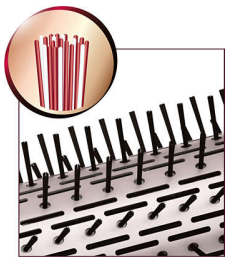
Highlights

1000W power



This 1000W airstyler creates the optimum level of airflow and gentle drying power, for beautiful results every day.

Natural bristles



The bristles of the ThermoBrush move through the hair more smoothly, reducing static, increasing shine and preventing tangles.

Ionic care



Ionic conditioning dries hair without building up static. Negatively charged ions are released, reducing frizz, smoothing down the hair's

cuticles and intensifying hair's shine and glossiness. The result is shiny, frizz-free hair that looks its best.

Tourmaline ceramic coating



The styler's unique tourmaline ceramic coating protects and revitalizes hair while you style. This special coating conducts heat effectively with no hot spots and adds shine with every stroke.

50mm round brush



The 50mm thermo brush is the perfect way to add volume, body and shine to your hair. Use on nearly-dry hair to create a beautiful salon blow dry at home.

30mm retractable brush



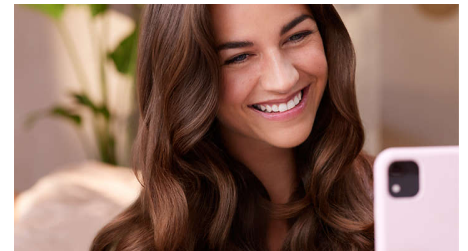
Use the 30mm brush to add defined waves while keeping hair smooth and shiny. Its retractable bristles make it easy to style without tangles.

Two way rotation



The brush can be rotated in both directions, making it easy to handle and create a variety of styles.

Care+ setting



The 'Care+' setting ensures the optimum drying temperature and guards against overheating. Hair still dries fast, with the same powerful airflow but at a constant, caring temperature.

Specifications

Attachments

Retractable bristle brush: 30mm
Natural mixed bristle brush: 50mm
Brush cap: for 50mm round brush

Technical specifications

Color/finishing: Silk white with Oyster metallic
Cord length: 1.8 m
Voltage: 220–240 V
Wattage: 1000 W

Features

Hanging loop
Swivel cord
Ionic conditioning

Rotating setting: 2 rotating speed settings
Settings: Heat settings: 3, Speed setting: 2
Tourmaline ceramic coating

Service

2-year guarantee

